

Rpt. C.11.

Lloyd's Register of Shipping.

SURVEYS FOR FREEBOARD.

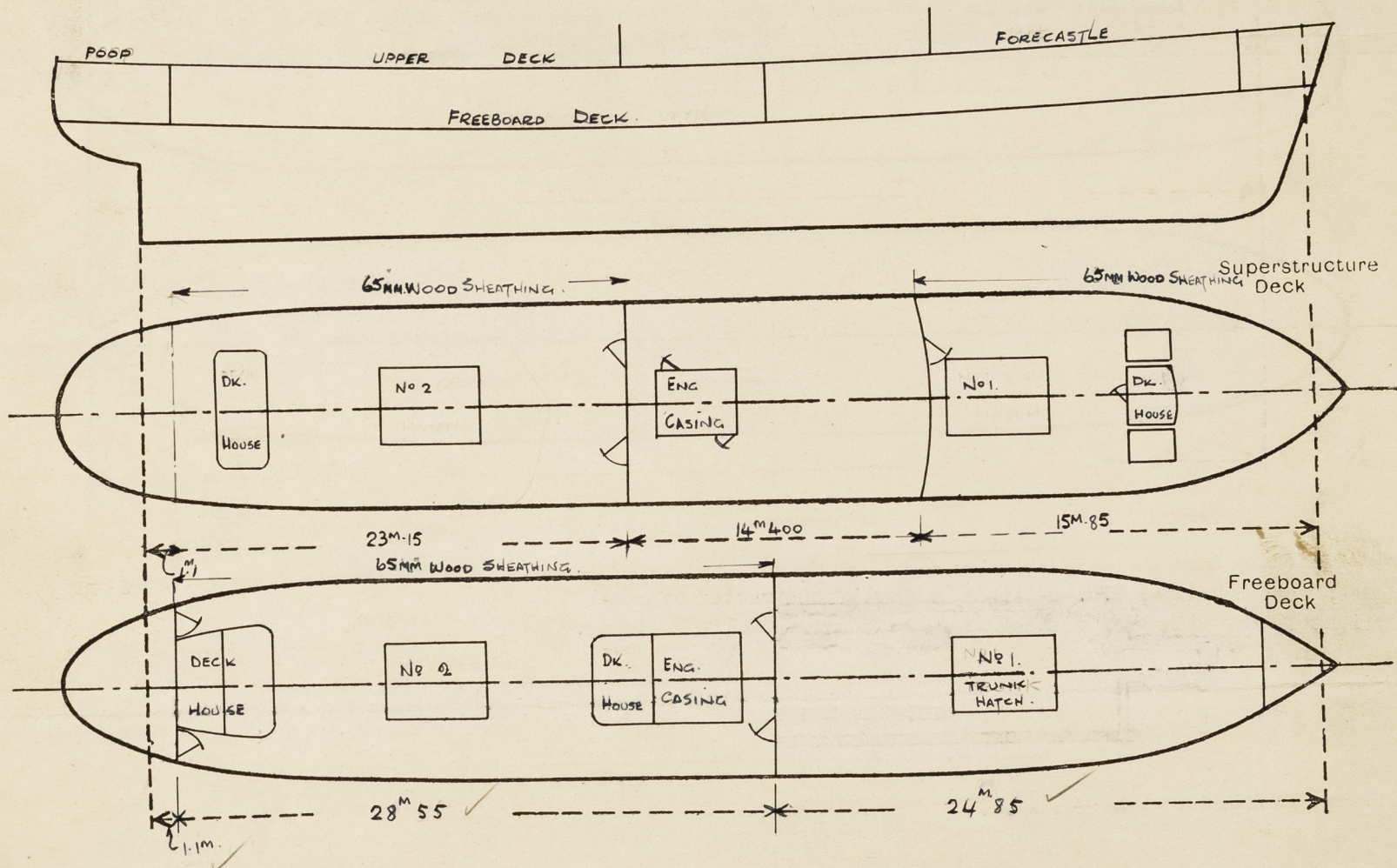
(CONDITIONS OF ASSIGNMENT.)

Index No.
(For London Office only.)

F-8014

Ship's Name "AUNG TEZA" Port of Survey Hiroshima
Official Number _____ Surveyor's Signature Hector M. Lean
Nationality and Port of Registry Burmese, Rangoon Date of Survey Whilst Building

Disposition and dimensions of superstructures, trunks, deckhouses and machinery casings to be inserted in the diagrams and tabular statement:—



Particulars of Superstructures, Trunks, Casings, Deckhouses.

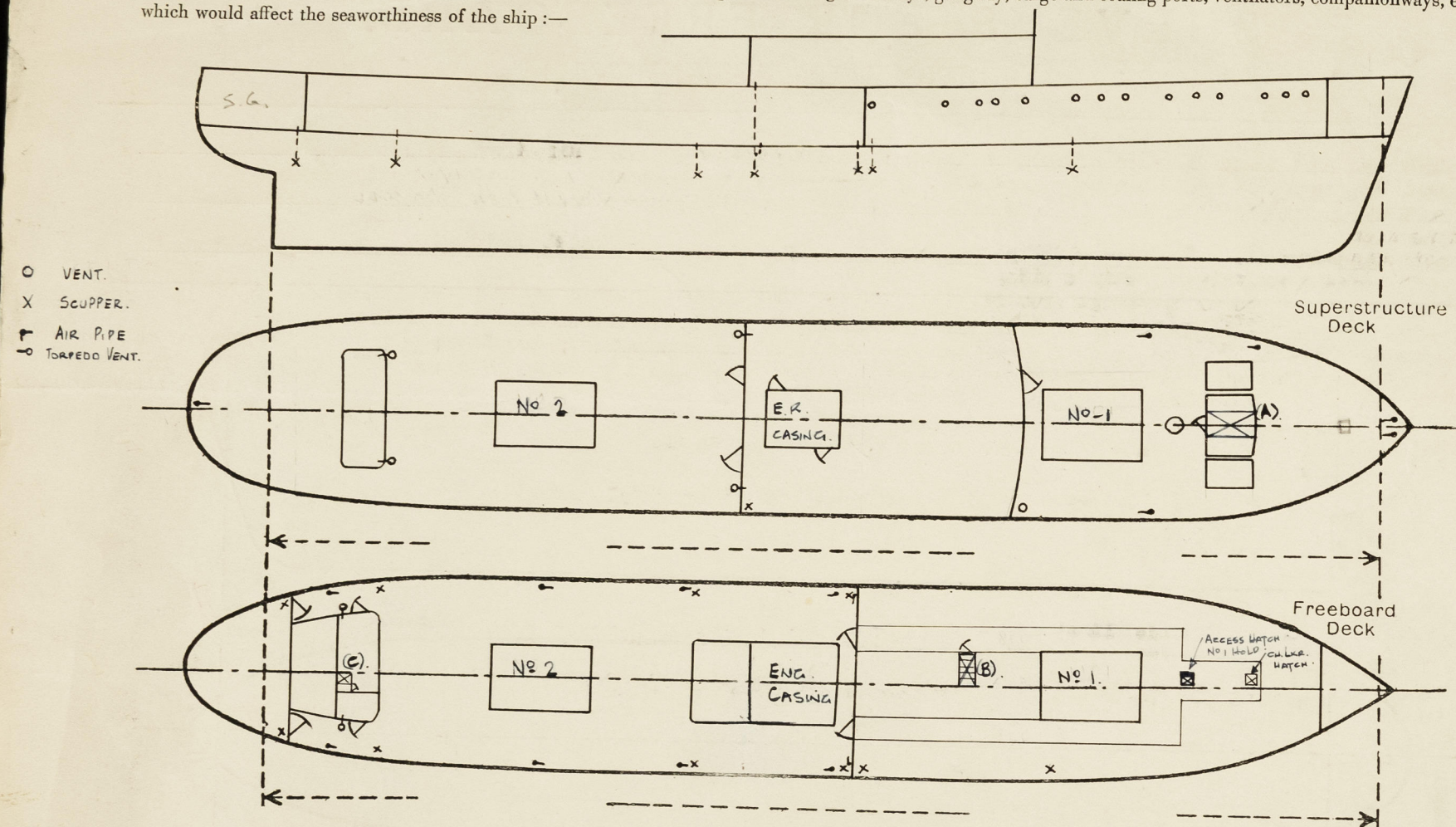
	Coaming	Plating	Stiffeners	Spacing	End Attachments of Stiffeners	Size of Openings	Height of Sills	Height of Casings
Poop Bulkhead ...	7.5 mm	6.5 - 7.5 mm	125x75x10 Inv.A.	700mm	Bkts T & B	2 at 600 x 1,250	610mm	2.400
Raised Quarter Deck Bulkhead ...								
Bridge, After Bulkhead ...								
Bridge, Forward Bulkhead...								
Forecastle Bulkhead...	6 mm	6 mm	65x65x6 Inv.A.	650mm	Bkts T & B	2 (1p. & 1s.) 600 x 1,250	610mm	2.400
Trunk, Aft ...								
Trunk, Forward ...								
Exposed Machinery Casings on Freeboard or Raised Quarter Decks...	8 mm	8 mm	65x65x6 Inv.A.	600mm	Bkts Top	-	-	2.400
Exposed Machinery Casings on Superstructure Decks ...	6 mm	5 mm	65x65x6 Inv.A.	600mm	Bkts Top	2 (1p. & 1s.) 600 x 1,500	300mm	2.400
Machinery Casings within Superstructures not fitted with Class I Closing Appliances								
(Bridge) Fwd Bhd.	7.5 mm	7.5 mm	125x75x10 Inv.A.	700mm	Bkts T & B	600 x 1,400	610mm	2.400
Deckhouses	6 mm	6 mm	65x65x6 Inv.A.	700mm	Bkts T & B	600 x 1,400	610mm	2.400

Particulars of Closing Appliances (state if capable of being manipulated from both sides).

Poop Bulkhead ...	Hinged steel doors operated both sides (class 1)
Raised Quarter Deck Bulkhead ...	
Bridge, After Bulkhead ...	
Bridge, Forward Bulkhead ...	
Forecastle Bulkhead...	Hinged steel doors operated both sides (class 1)
Exposed Machinery Casings on Freeboard or Raised Quarter Decks...	None
Exposed Machinery Casings on Superstructure Decks ...	Hinged steel door operated from both sides.
Machinery Casings within Superstructures not fitted with Class I Closing Appliances	
Deckhouses	Hinged steel doors operated both sides (class 1)

PARTICULARS OF PROTECTION TO OPENINGS, ETC.

The following diagrams should be used to indicate the positions of cargo and coaling hatchways, gangway, cargo and coaling ports, ventilators, companionways, etc., which would affect the seaworthiness of the ship :—



Particulars of fiddle, funnel and ventilator coamings, engine room skylight and other openings in machinery casing tops and their means of closing :—
 Funnel, vent coamings, E.R. skylight strongly constructed of steel
 Skylight fitted with hinged steel flaps with strong bulleye lights.

Particulars of Flush Bunker Scuttles :—

Particulars of Companionways :—

- (A) Strong steel companion way on superstructure deck enclosed in strong steel deckhouse. Hinged steel W/T door operated from both sides 1M25 x 500mm sill 610mm.
- (B) Strong steel companion way on freeboard deck enclosed in superstructure. Hinged steel door operated both sides 600mm x 1M40, sill 457mm.
- (C) Strong steel escape trunk in strong steel casing on freeboard deck, hinged steel W/T doors, operated both sides. Sill 610mm.

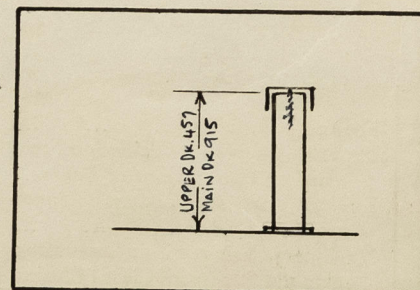
Particulars of Ventilators in exposed positions on freeboard and superstructure decks :—

- 2 Engine room cowl vents on casing top. Coaming ht. 950mm at 300mm dia. x 8-1/2".
- Boat Deck
 1.382mm dia. mast vent, coaming 10-1/2" efficiently stayed.
- Mushroom vents fitted with screw down cover. Other vents wood plug with canvas cover.

Upper Deck
 1-380mm dia. mast vent, coaming 10-1/2" efficiently stayed.
 1-250mm dia. M.V. coaming ht. 457 mm. x 8-1/2"

Particulars of Air Pipes in exposed positions on freeboard, raised quarter, or superstructure decks :—

- Upper Deck (Fore.) 4 3 1/2" dia. x 457mm high
 1 2 1/2" dia. x 457mm high
- Upper Deck (Aft) 1 2 1/2" dia. x 457mm high
- Freeboard Deck 8 2 1/2" dia. x 915 high
 2 2" dia. x 915 high
- All air pipes fitted with screw down mushroom tops. O.F. tank air pipes provided with wire gauze.



Particulars of Gangway Cargo and Coaling Ports :—

None

Particulars of Scuppers and Sanitary Discharge Pipes :—

- 2-2" deck scuppers (P. & S.) from upper deck forward led outboard below freeboard deck with open end.
- 3-3" deck scuppers (P. & S.) from main deck aft led overboard below freeboard deck with open end.
- 1-5" soil discharge (P. & S.) from aft end main deck led overboard below freeboard deck with brass storm valve at ships side.
- 1-5" soil discharge (P. & S.) from midships accommodation aft (upper & main deck) led overboard below freeboard deck with brass storm valve at ship's side.
- 1-3" scupper and washbasin discharge from forecastle space, led overboard below the freeboard deck through brass screw down non-return valves geared to boat deck with open/shut indicator.
- 1-5" scupper, soil and washbasin discharge (P. & S.) from midships accommodation and forecastle space led overboard below the freeboard deck through brass screw down non-return valves geared to upper deck with open/shut indicator.
- CHAIN LOCKER DRAINED BY 1 1/2" S.E. HAND PUMP DISCHARGING ONTO DECK.
- STEERING GEAR COMPT. DRAINED OVERBOARD BY 2" SCUPPER FITTED WITH S.V. AT SHIPS SIDE.

Particulars of Side Scuttles :—

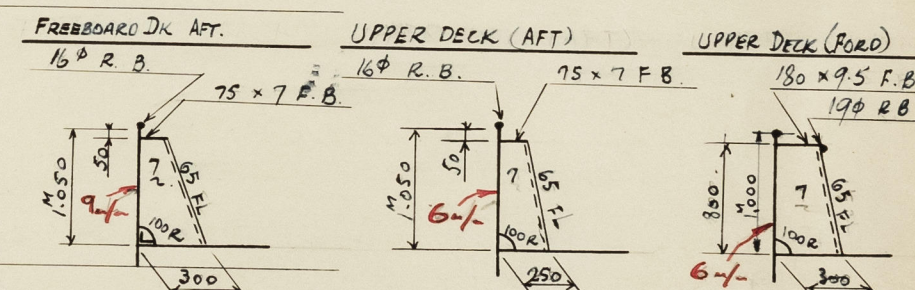
Above Freeboard Deck (Port side 14 at 12" dia.
 (Starboard 14 at 12" dia.

Material of brass, substantial construction and fitted with gunmetal deadlights, side scuttles and deadlights in accordance with British Standards.

Vertical distance of Sill of lowest Side Scuttle above top of keel 5.148

Particulars of Guard Rails :—

- Freeboard Deck As per sketch. Bulwark stays 2M525 apart.
- Upper Deck Aft As per sketch. Bulwark stays 2M600 apart.
- Upper Deck For'd As per sketch. Bulwark stay 1M8.



Particulars of Gangways, Lifelines, etc. :—

None

Particulars of Freeing Arrangements.

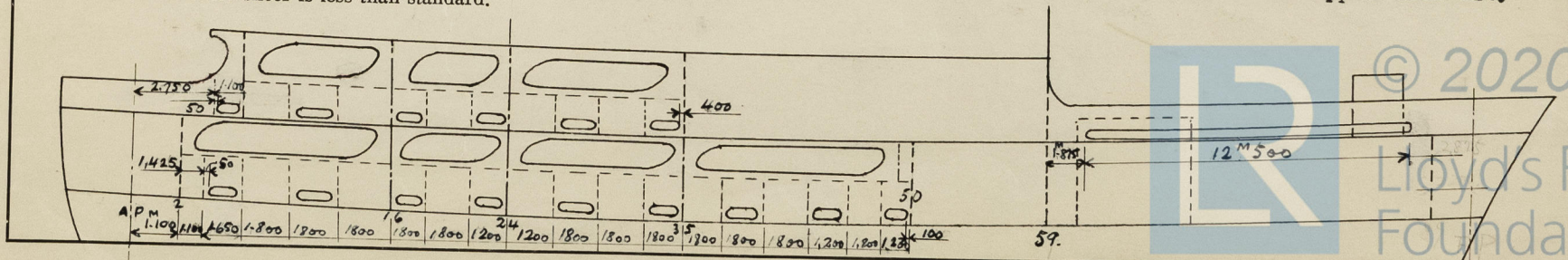
	Length of Bulwark	Height of Bulwark	Size of Freeing Ports	Number each side	Area each side	Rule area each side
After Well	Freeboard Deck 28 ^M 550	1 ^M 050	0.220 x 1 ^M 000	9	1,887 ^M 2	1.735 ^M 2
...	Upper Deck 20 ^M 450 24.25	1 ^M 050	0.220 x 1 ^M 000	6	1,258 ^M 2	0.736 ^M 2
Forward well	19 ^M 450 15.85	1 ^M 000	0.100 x 1 ^M 500	1	1,248 ^M 2	0.544 ^M 2

State position of each freeing port ... After Well :— As per sketch.

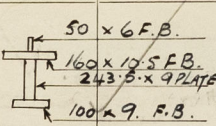
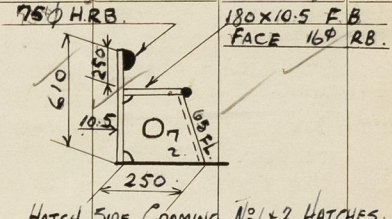
(F. and A. position and height above deck edge) Forward Well :— As per sketch (Main Deck - 50mm above wood deck.
 (Upper Deck - 100mm above wood deck.

State whether the freeing ports are fitted with shutters, bars, or rails, and give particulars of such :— Shutters (hinged plate 6mm thick. with brass pins) fitted at main and upper deck aft.

Additional area where sheer is less than standard.



PARTICULARS OF PROTECTION TO OPENINGS, ETC.

HATCHWAYS ON FREEBOARD AND SUPERSTRUCTURE DECKS.									
Freeboard Deck					Upp. Deck				
Description of Hatchway	No.2	Ch. Lkr. Hatch	Acc. Hatch to No.1	No.1	Acc. TO BOSUNS STORE				
Dimensions of Hatchway	3.000x4.800	450 x 450	500 x 500	3.000x4.800	600 DIA.				
COAMINGS	Height above Deck	610	380	610	610				
	Thickness { Sides	10.5	8.5	10.5	10.5				
	Thickness { Ends								
	Stiffeners	2E.3S			2E.3S				
HATCH BEAMS	Number	3			3				
	Spacing	1.200			1.200				
	Scantling and Sketch	See Sketch	-	-	See Sketch				
	Bearing Surface	75mm			75mm				
FORE AND AFTERS	Number								
	Spacing								
	Unsupported Lengths								
	Scantling* and Sketch								
HATCH COVERS	Material	Wood	Steel	Steel	Wood	STEEL			
	Thickness	65mm	8.5mm	10.5mm	65mm				
	How fitted	F. & A.	Hinged W/T secured by 4 clips	Hinged W/T secured by 4 clips	F. & A. HINGED				
	Bearing Surface	75mm			75mm	4 CLIPS.			
Spacing of Cleats	568 mm			568mm					
Number of Tarpaulins	2			2					
<p>*Are wood for coamings steel shod at all bearings of deck? Yes</p> <p>Are battens and wedges efficient and in good condition? Yes</p> <p>Are tarpaulins in good condition and in accordance with rule requirements? Yes</p> <p>Are lashings provided in accordance with rule requirements? Locking bars on 1 & 2 Hatches</p>									

Particulars of any special features :—



© 2020

Lloyd's Register Foundation