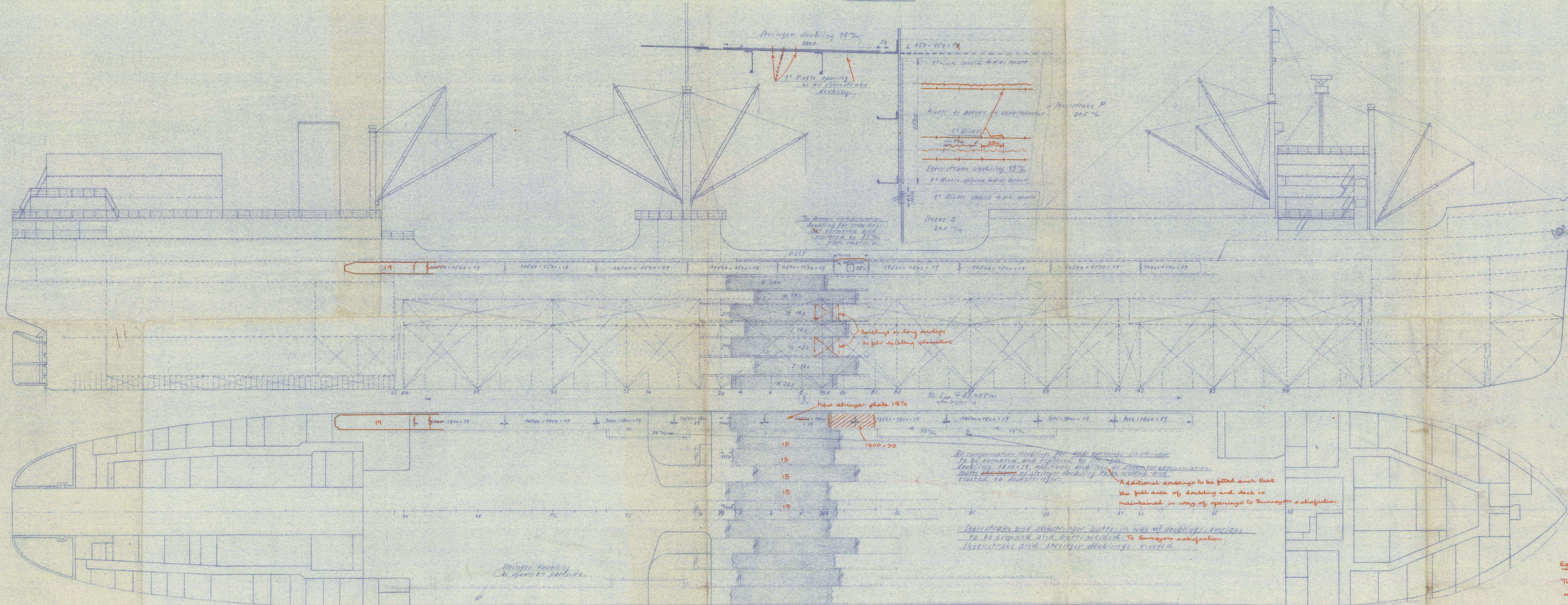
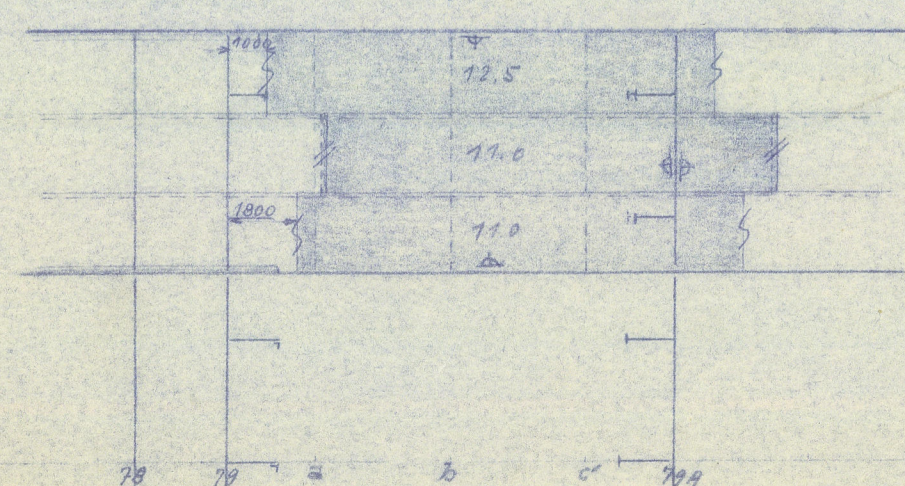


19 MAY 1955

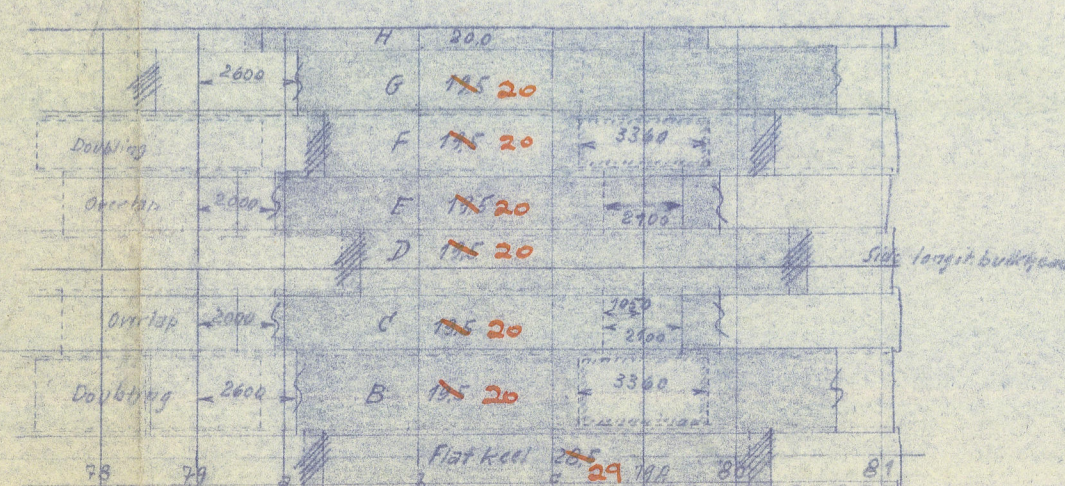
Scale 1:20



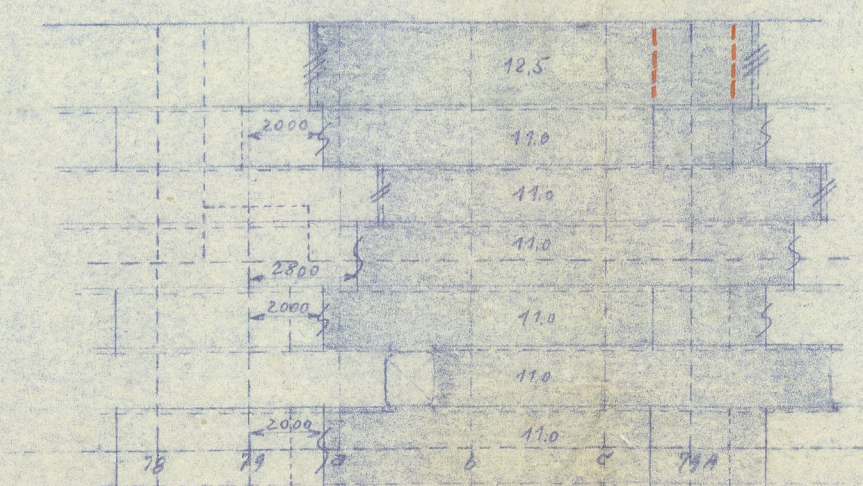
Third deck



Bottom



Second deck



Remarks:
 § Plate butts marked thus
 will be new cut and welded.
 § Plate butts marked
 will be opened and after
 lengthening replaced by riveting.

Equipment

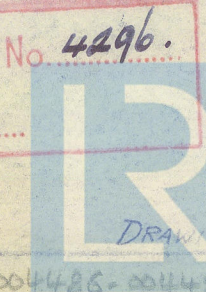
The third bow anchor (93 cwt) to be replaced by one of 122 cwt. and 3 additional 15 fathom lengths of 2 1/8" diameter cable supplied or equivalent arrangements provided.

T.S.M.V. SIR JAMES CLARK ROSS

GENERAL ARRANGEMENT
 OF LENGTHENING
 SHELL, BOTTOM AND DECK

SCALE: 1:200

TO ACCOMPANY REPORT No. 4496.
 DATED 8.55



© 2020

Lloyd's Register
 Foundation