

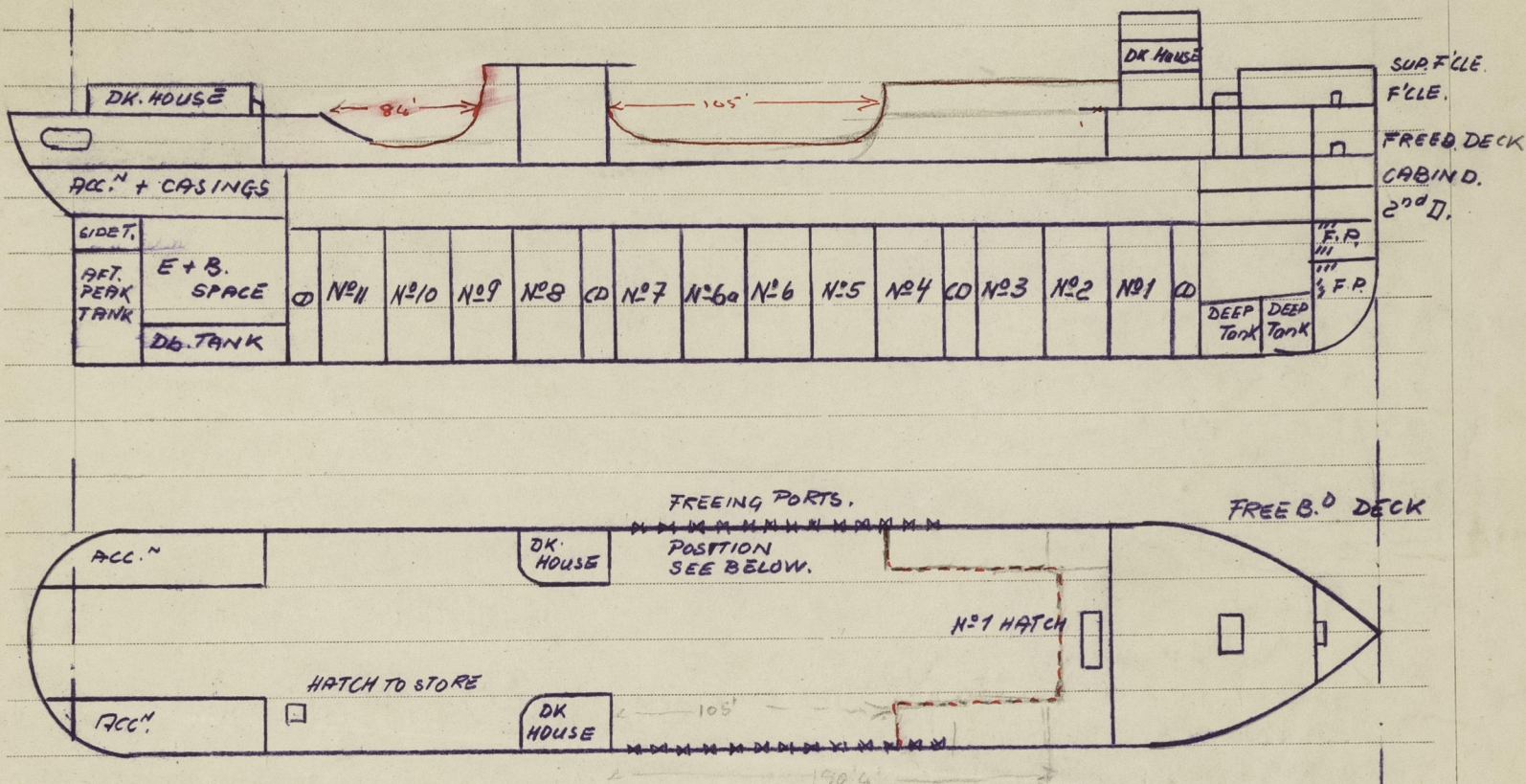
LLOYD'S REGISTER OF SHIPPING

UNITED WITH THE BRITISH CORPORATION REGISTER

Ship's Name M.V. "SIR JAMES CLARK ROSS" Official No. _____

Memorandum of alterations reported since ship was surveyed for assignment of Load Lines in MIDDLESBROUGH 1932 July 19, 20, 21, 22.

LENGTHENING OF SHIP.



LENGTH OF FORWARD WELL: 190' 4"

SIZE OF FREEING PORTS: 1 - 3'-10" x 9"
12 - 3'-6" x 9"

POSITION FROM FORE END OF MIDSHIP DK. HOUSE.

16'-4", 3'-6" FP, 4'-9", 3'-6" FP, 4'-1", 3'-6" FP, 3'-6", 3'-6" FP, 1'-2", 3'-6" FP, 1'-4",
3'-6" FP, 1'-4", 3'-6" FP, 1'-4", 3'-6" FP, 20'-6", 3'-6" FP, 1'-4", 3'-6" FP, 1'-4",
3'-6" FP, 1'-4", 3'-6" FP, 1'-4", 3'-10" FP.

NO VALVE COVERS FITTED ON FREEB. DECK

BOLTED COVERS 4" FITTED AS FOLLOWS:

4" 3/4" BOLTS 4" APART
6x3x3x.36 CHANNELS

HATCHES OVER MEAT BOILERS

FORWD. WELL: P.S. = 12

AFT. WELL: P.S. 4

43 1/2" x 39 1/2" OVAL

SS. = 10

SS. 4

MIDSHIPS: 8

MIDSHIPS: 0

Rose