

24 SEP 1948

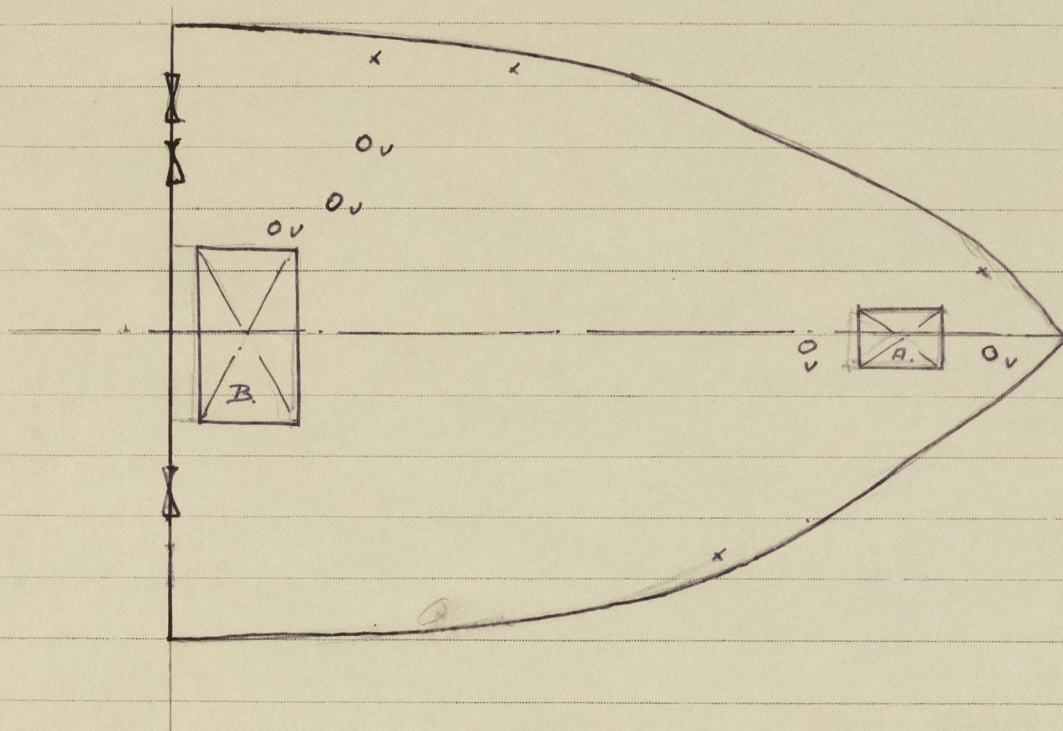
Rpt. C. 11 (Contd.)

Index No. FB 15

Lloyd's Register of Shipping.

Ship's Name M.V. "SIR JAMES CLARK ROSS" Official No. _____

Memorandum of alterations reported since ship was surveyed for assignment of Load Lines
in MIDDLESBROUGH 1932-July. 19, 20, 21, 22.



SUPER-
FORECASTLE FITTED LENGTH 14.00 M. HEIGHT 2.40 M WOOD DECK 75 mm

FORECASTLE BULKHEAD:

COAMINGS - PLATING 7 mm. STIFFENERS SP. T. 90 x 75 x 10.

SPACING 825 ÷ 7.00 mm. END ATTACHMENTS OF STIFFENERS NONE

SIZE OF OPENINGS 1.630 x 700 SILL 450 mm.

DOORS. STEEL HINGED DOORS OPERATED FROM BOTH SIDES

HATCHWAY A SIZE 1250 x 610 mm. COAMINGS 10 mm. HEIGHT ABOVE DECK

610 mm. STEEL HINGED W.T. COVER. SECURED BY TOSSELS.

HATCHWAY B. SIZE 2000 x 1030 mm. COAMINGS 11 mm. HEIGHT ABOVE DECK

610 mm. STEEL HINGED W.T. COVER SECURED BY TOSSELS.

4 AIR PIPES HEIGHT ABOVE DECK 720 mm & CLOSED BY CANVAS COVERS

VENTILATOR COAMINGS. SIZE ϕ 300 x 11 (2) ϕ 460 x 11 (1) HEIGHT ABOVE DECK 930 mm.

ALL VENTILATORS CLOSED BY WOOD PLUGS AND CANVAS

COVERS.

Tax charged on form C 11 (d)

G. H. W.



© 2020

Lloyd's Register
Foundation