

Lloyd's Register of Shipping.

SURVEYS FOR FREEBOARD.

Index No. 36411
(For London Office only).

NOV -8 1940

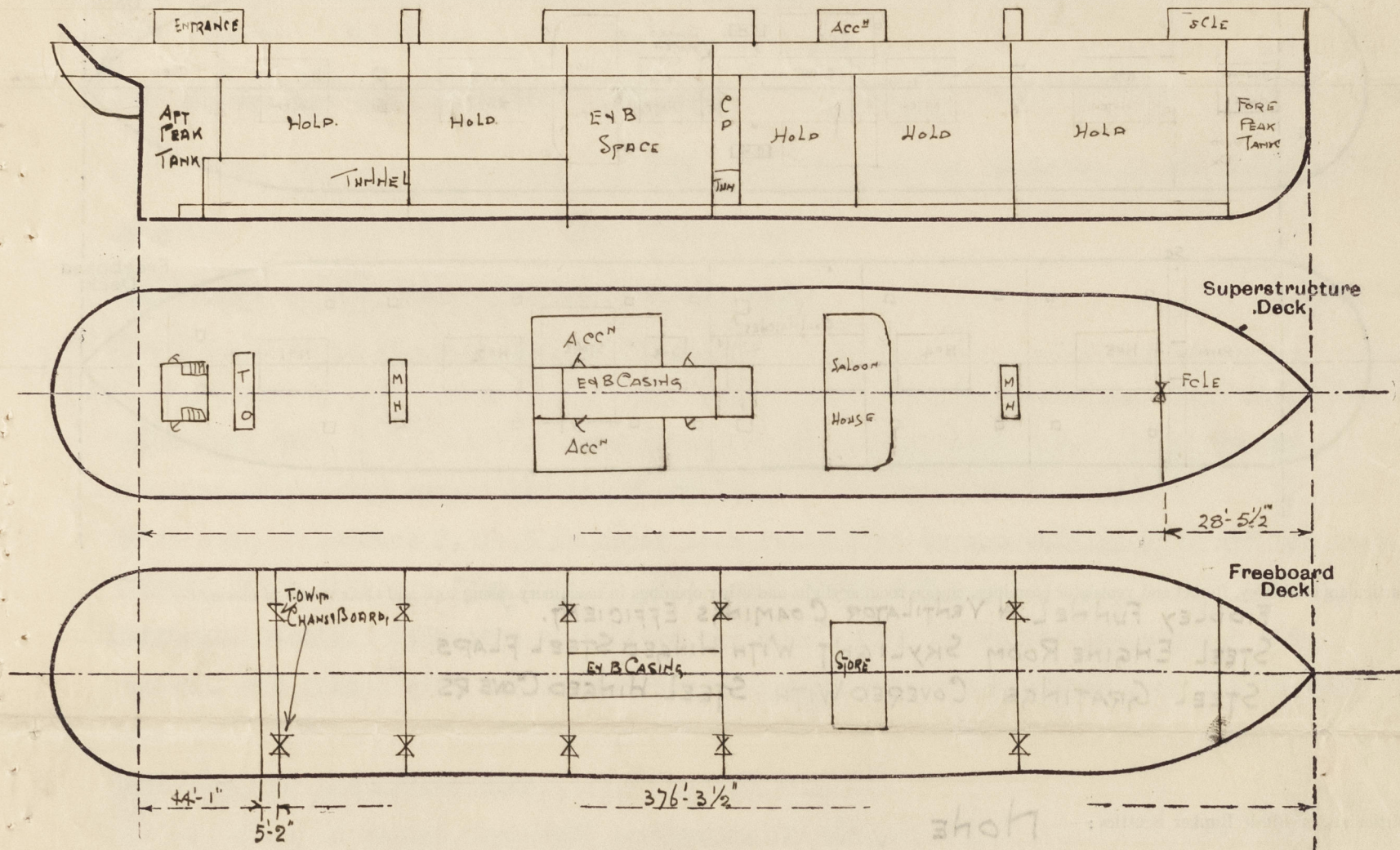
"MASTROMITSOS" (CONDITIONS OF ASSIGNMENT.)

GRK. REPORT NO 21131

Ship's Name **REMBRANDT**
Official Number **168048**
Nationality and Port of Registry **BRITISH LONDON**

Port of Survey **GREENOCK**
Surveyor's Signature **Kenneth Inglis**
Date of Survey **WHILE BUILDING**

Disposition and dimensions of superstructures, trunks, deckhouses and machinery casings to be inserted in the diagrams and tabular statement:--



Particulars of Superstructures, Trunks, Casings, Deckhouses.

| | Coaming | Plating | Stiffeners | Spacing | End Attachments of Stiffeners | Size of Openings | Height of Sills | Height of Casings |
|-----------------------------------------------------------------------------------------|---------|---------|--------------------|-----------|-------------------------------|---------------------|-----------------|-------------------|
| Poop Bulkhead ... | 30 | 30 | 3 1/2 x 3 1/2 x 30 | 30 and 36 | NONE | NONE | ✓ | 8'-0" |
| Raised Quarter Deck Bulkhead ... | ✓ | | | | | | | |
| Bridge, After Bulkhead ... | 30 | 30 | 3 1/2 x 3 1/2 x 30 | 30 and 36 | NONE | 2 @ 5'0" x 4'0 1/2" | 18 | 8'-0" |
| Bridge, Forward Bulkhead ... | ✓ | | | | | | | |
| Forecastle Bulkhead ON UPPER Dk | 30 | 30 | 4 x 3 x 32 | 26 and 31 | NONE | 1 @ 5' x 4' | 18 | 7'-0" |
| Trunk, Aft ... | ✓ | | | | | | | |
| Trunk, Forward ... | ✓ | | | | | | | |
| Exposed Machinery Casings on Freeboard or Raised Quarter Decks ... | ✓ | | | | | | | |
| Exposed Machinery Casings on Superstructure Decks ... | 34 | 30 | 4 x 3 x 35 | 36 | Becks At Top | 2 @ 5' x 2'-3" | 18 | 7'-6" |
| Machinery Casings within Superstructures not fitted with Class I Closing Appliances ... | 30 | 26 | 3 x 3 x 30 | 27 | CONTINUOUS TO 2ND DECK | 2 @ 2'-0" x 2'-6" | 12 | 8'-0" |
| Deckhouses on Flush Deck Ships ... | ✓ | | | | | | | |

Particulars of Closing Appliances (state if capable of being manipulated from both sides).

| | |
|-----------------------------------------------------------------------------------------|----------------------------------------------------------------|
| Poop Bulkhead ... | NONE No openings |
| Raised Quarter Deck Bulkhead ... | ✓ |
| Bridge, After Bulkhead ... | 3/4" WOOD BOARDS FULL HEIGHT IN CHANNELS RIVETED TO BULKHEAD ✓ |
| Bridge, Forward Bulkhead ... | ✓ |
| Forecastle Bulkhead ON UPPER Dk | 3/4" WOOD BOARDS FULL HEIGHT IN CHANNELS RIVETED TO BULKHEAD ✓ |
| Exposed Machinery Casings on Freeboard or Raised Quarter Decks ... | ✓ |
| Exposed Machinery Casings on Superstructure Decks ... | 2 STEEL DOORS MANIPULATED FROM BOTH SIDES ✓ |
| Machinery Casings within Superstructures not fitted with Class I Closing Appliances ... | STEEL HINGED DOORS ✓ |
| Deckhouses on Flush Deck Ships ... | ✓ |

1

ways, etc.,

2

SE

✓

ATED IN

1172

1000

30

•

7

1

d

18

✓

PARTICULARS OF PROTECTION TO OPENINGS, ETC.

| HATCHWAYS ON FREEBOARD AND SUPERSTRUCTURE DECKS. | | | | | | | | | | |
|--------------------------------------------------|----------------------|----------------|--------------|--------------|--------------|--------------------|-------------|-------------|-------------|-------------|
| Description of Hatchway | SUPERSTRUCTURE Dk | | | | FREEBOARD Dk | | | | | |
| | Nº1 | Nº2 & 5 | Nº3 | Nº4 | Nº1 | Nº2 & 5 | Nº3 | Nº4 | Coal Hatch | |
| Dimensions of Hatchway | 31'6" x 23 | 31 x 23 | 18'1" x 18' | 33'7" x 23' | 31'6" x 23 | 31 x 23 | 18'1" x 18' | 33'7" x 23 | 8'7" x 18' | |
| COAMINGS | Height above Deck | 30" | 30 | 30" | 30 | | | | | |
| | Thickness | .50 | .50 | .50 | .50 | | | | | |
| | Sides | .44 | .44 | .44 | .44 | | | | | |
| | Ends | .44 | .44 | .44 | .44 | | | | | |
| HATCH BEAMS | Stiffeners | BA 9 x 3 x .44 | --- | --- | --- | | | | | |
| | Brackets, Stays | 3 | 3 | 1 | 3 | | | | | |
| | Number | 5 | 5 | 3 | 6 | 5 | 5 | 4 | 6 | 4 |
| | Spacing | 5-3 | 5-2 | 4-6 1/2 | 4-9 1/2 | 5-3 | 5-2 | 4-6 1/4 | 4-9 1/2 | 4-3 1/2 |
| FORE AND AFTERS | Scantling and Sketch | 20 x .37 | 15 1/2 x .34 | 14 3/8 x .31 | 15 1/8 x .32 | 20 x .37 | 20 x .36 | 15 x .35 | 20 x .35 | 17 x .36 |
| | Bearing Surface | 5 x 3 x .46 | 5 x 3 x .46 | 4 x 3 x .44 | 5 x 3 x .46 | 5 x 3 x .46 | 5 x 3 x .46 | 4 x 3 x .44 | 5 x 3 x .46 | 4 x 3 x .44 |
| | Number | 3 | 3 | 3 | 3 | 3 | 3 | 3 | 3 | 3 |
| | Spacing | 3 | 3 | 3 | 3 | 3 | 3 | 3 | 3 | 3 |
| HATCH COVERS | Material | WOOD | WOOD | WOOD | WOOD | 2 1/2" WOOD COVERS | | | | |
| | Thickness | 2 1/2 | 2 1/2 | 2 1/2 | 2 1/2 | FITTED FORE & AFT | | | | |
| | How fitted | F & A | F & A | F & A | F & A | | | | | |
| | Bearing Surface | 3 | 3 | 3 | 3 | 3 | 3 | 3 | 3 | 3 |
| Spacing of Cleats | 24 | 24 | 24 | 24 | 24 | 24 | 24 | 24 | 24 | 24 |
| Number of Tarpaulins | 2 | 2 | 2 | 2 | 1 | 1 | 1 | 1 | 1 | 1 |

*Are wood fore and afters steel shod at all bearing surfaces? ☒ YES
 Are battens and wedges efficient and in good condition? ☒ YES
 Are tarpaulins in good condition and in accordance with rule requirements? ☒ YES.
 Are lashings provided in accordance with rule requirements? ☒ YES.

Particulars of any special features:—

HATCH TO AMMUNITION STORE
 COAMING 21 x .40
 COVERS 2 1/2" WITH TWO
 TARPAILINS & USUAL BATTENING
 ARRANGEMENTS.

SMALL HATCHES ON SUPERSTRUCTURE Dk
 FORWARD UNDERFLE 4' x 3'
 CHAIN LOCKER " " 2'6" x 2'
 9 x 3 x .40 BA COAMING 2 1/2" COVERS.
 ONE TARPAILIN, CLEATS 24" APART ETC.
 COAL HATCH PHS 15'6" x 6'0"
 COAMING 30' x .44 STIFFENED BY 3 1/2 x 3 1/2.
 ANGLES CONNECTED TO BEAMS.
 3" COVERS, 2 TARPAILINS, CLEATS 24" APART
 & USUAL BATTENING ARRANGEMENTS.
 TONNAGE OPENING 5'2" x 23'
 COAMING 12 x 3 1/2 x .50 BA. 2 1/2" COVERS
 SECURED BY HEMPLASHINGS
 COAL SHOOT HATCH ON BOAT Dk 7'0" x 16'0"
 COAL HATCH ON BOAT Dk 10'4" x 16'0"
 COAMING 9 x 3 x .40 BA COAMING.
 CLEATS 24" APART. ONE HATCH BEAM
 FITTED IN COAL HATCH 14' x 36" WITH 3 1/2 x 3 1/2 x .42
 DOUBLE ANGLES TOP & BOTTOM. FITTED WITH
 TWO TARPAILINS & USUAL BATTENING ARRANGEMENTS.

SMALL HATCHES ON FREEBOARD Dk
 20' RIMMING HATCHES 24' x 30'
 2 COAL HATCHES 5'2" x 5'0"
 HATCH IN TONNAGE SPACE 10'0" x 5'2"
 COAMINGS 9 x 3 x .40 BA.
 2 1/2" SOLID WOOD COVERS.
 CLEATS MAX. SPACING 24"
 ONE TARPAILIN & USUAL BATTENING
 ARRANGEMENTS

Endorsement at first survey and at surveys for renewal of Certificate:—

The fittings and appliances are in accordance with the particulars shown on this form (or as now modified) and are in good condition.



© 2021

Lloyd's Register
Foundation