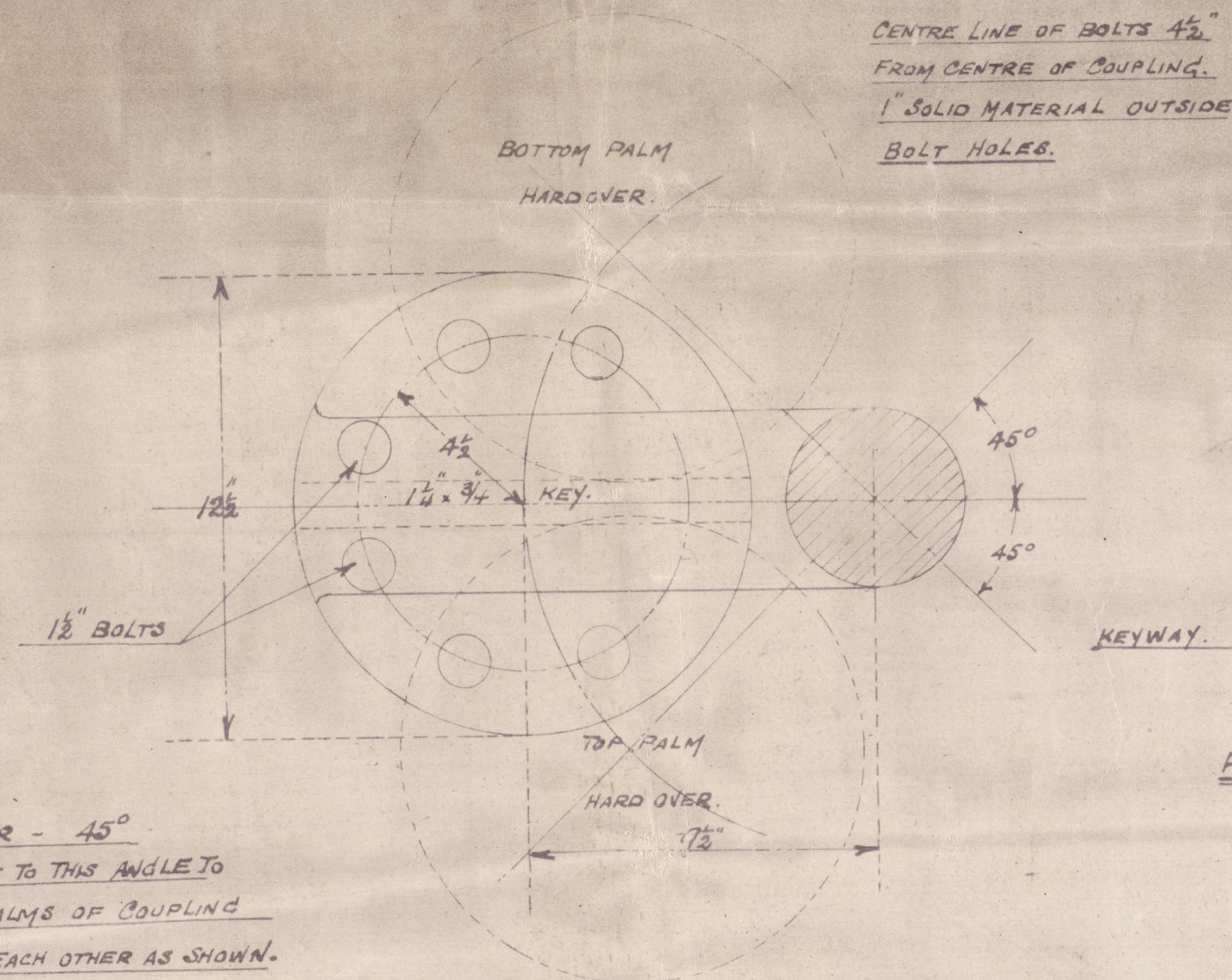
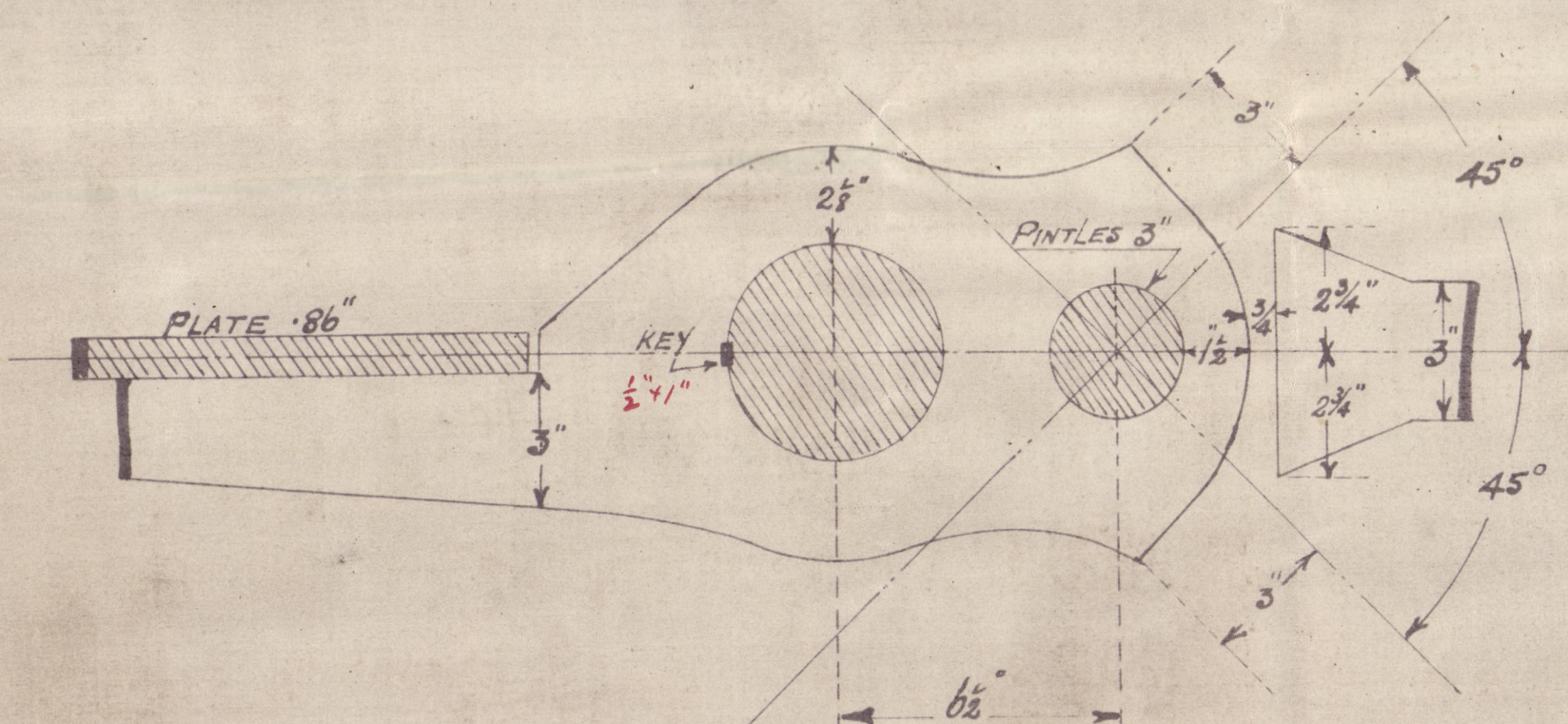


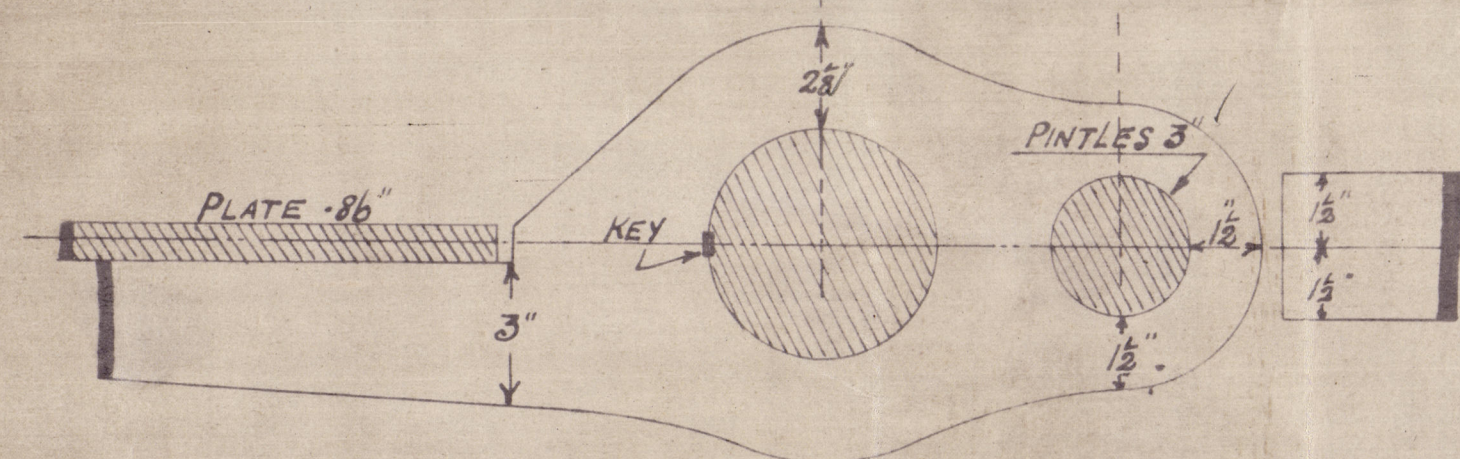
20.5.20.



DETAIL OF COUPLING.

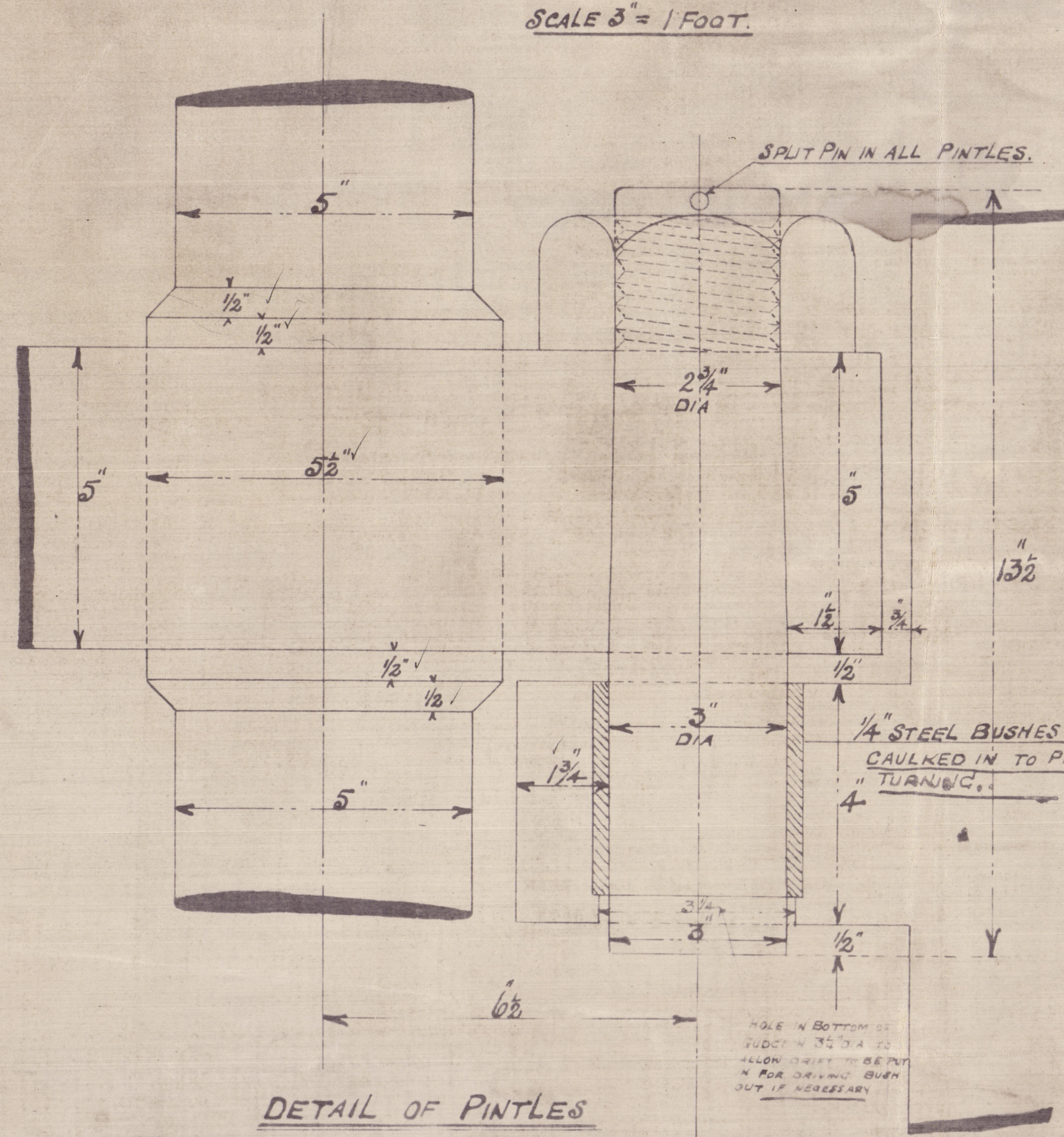


DETAIL OF STOPPER.



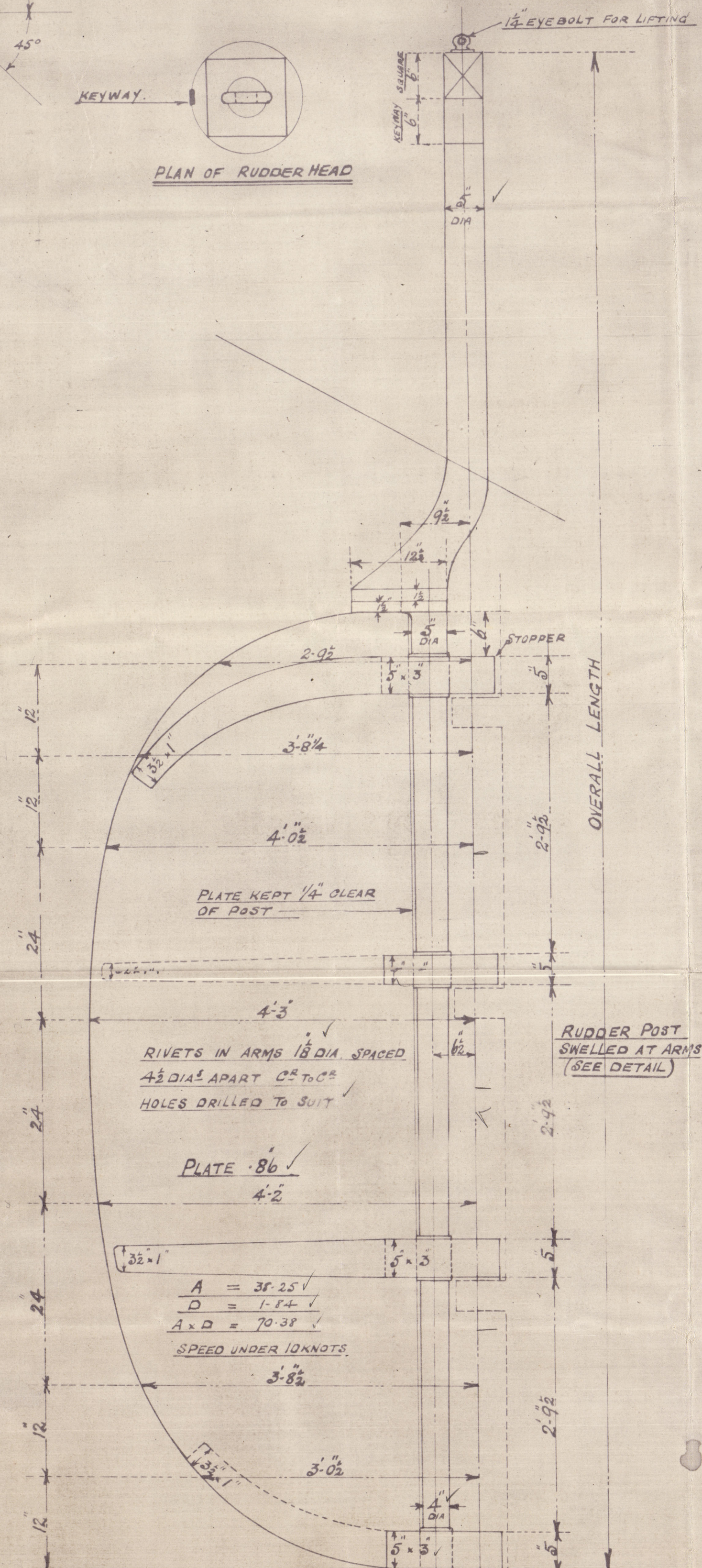
DETAIL OF ORDINARY ARM.

SCALE 3" = 1 FOOT.

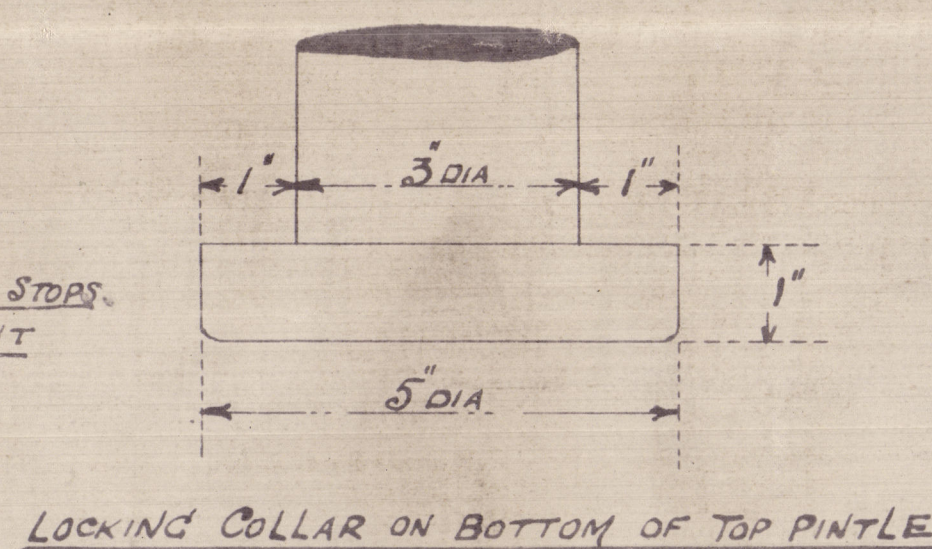


DETAIL OF PINTLES

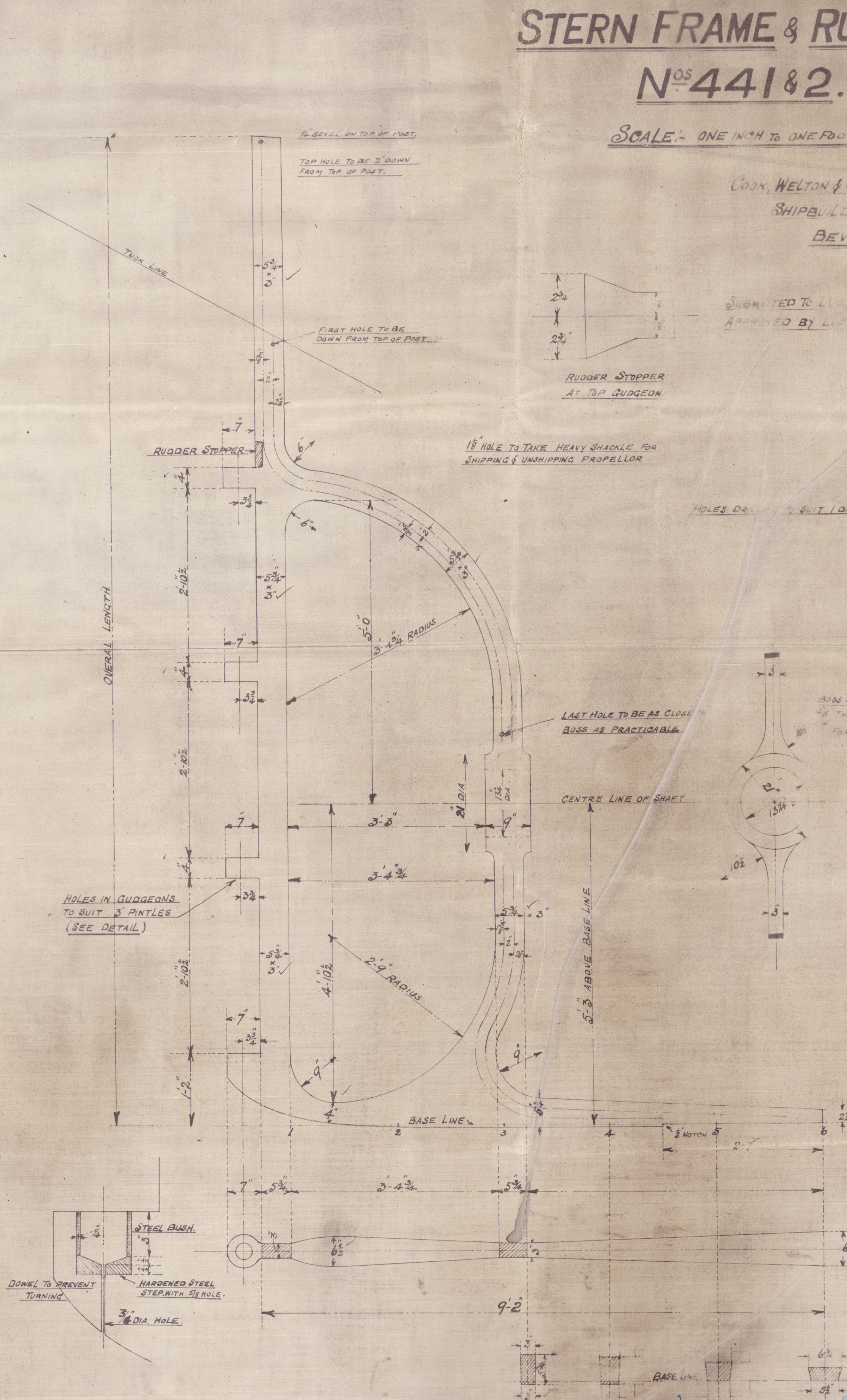
SCALE: HALF SIZE.



PLAN OF RUDDER HEAD



LOCKING COLLAR ON BOTTOM OF TOP PINTLE



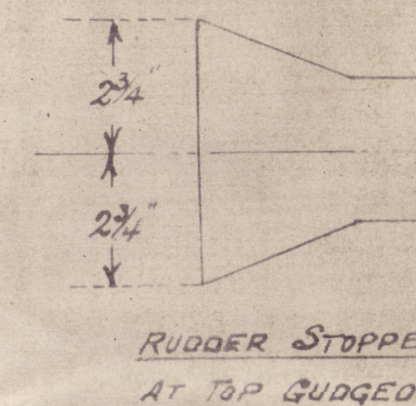
STERN FRAME & RUDDER.

N^{OS} 441 & 2.

SCALE: ONE INCH TO ONE FOOT.

COOK, WELTON & GEMMELL LTD
SHIPBUILDERS
BEVERLEY.

SUBMITTED TO LLOYDS 1920
APPROVED BY LLOYDS 1920



RUDDER STOPPER
AT TOP GUDGEON

1 1/2 HOLE TO TAKE HEAVY SHACKLE FOR
SHIPPING & UNSHIPING PROPELLOR

HOLE DR. TO SUIT 1 1/2 DIA. RIVETS 4 TON

LAST HOLE TO BE AS CLOSE
TO RUDDER AS PRACTICABLE

ROSS DOES TO BE TAPERED
1/2\"/>

HOLE BORED EXACTLY TO
SIZE GIVEN 1 1/2 - 3 1/4 DIA

C.T.
19.5.20

STERN FRAME & RUDDER.

COOK WELTON & GEMMELL ^{TD}

N^{OS} 441-2.

441 $\frac{5}{8}$ " Pedemere

Hull 32915.

442 $\frac{5}{8}$ Hatchmere

Hull 32959.



© 2021

Lloyd's Register
Foundation