

MARKING FORM  
RECEIVED 31 JAN 1979

Do all the Frames extend to the top height in the Poop? *Yes* Raised Quarter Deck? *Yes* Bridge House? *Yes* Forecastle? *Yes*

To what height do the Reverse Frames extend? *Longitudinal Framing*

Has the Poop or Raised Quarter Deck an efficient Iron Bulkhead at the fore end? *Yes*

Give particulars of the means for closing the openings in Bulkhead *Two openings = 3'-1" Closed with steel coamings = 18 1/2" x 24" full height in riveted girders*

Is the Poop or Raised Quarter Deck connected with the Bridge House? *No* Has the Bridge House an efficient Bulkhead at the fore end? *Yes*

Give particulars of the means for closing the openings in Bulkhead *One opening = 2'-8 1/2" Closed with W.J. steel door secured in riveted bulkhead*

What is the thickness of the Bridge Front plating? *40* and Coaming plate? *44*

Give scantlings and spacing of the Stiffeners *B.A. 9 x 3 1/2 x 42 Spaced 2'-3 1/2" - 2'-4"*

Are bracket plates fitted at each end of the Stiffeners? *Yes* Are hor'l. brackets fitted connecting Bridge Bulk'd. with Bulwarks? *Yes*

Has the Bridge House an efficient Iron Bulkhead at the after end? *Yes*

How are the openings closed? *Two openings = 3'-1" Closed with steel coamings = 19" x 24" storm boards full height in riveted girders*

Is the Forecastle at least as high as the main or top-gallant rail? *7'-6"* Has the Forecastle an efficient Iron or Wood Bulk'd. at after end? *Yes*

Are the Engine and Boiler openings covered by a Bridge, Poop, Raised Quarter Deck, or enclosed by a Strong Iron or Steel Deckhouse? *Yes*

If the openings are not so protected are the exposed parts of the Casings efficiently constructed? *Yes*

Give thickness of plating; scantlings and spacing of Stiffeners *.30 Coaming 34 Stiffeners 3 x 2 1/2 x 30 Spaced 2'-2 1/2" - 3'-9"*

What is the height of the exposed Casings? *7'-6"* Are suitable means provided for closing all openings in them in bad weather? *Yes*

Are the Weather Deck Hatchways efficiently constructed and at least equal to the requirements of Section 28 of the Rules for 1904-5? Give particulars below: *Yes*

Position and Size.	Ship.	Rule.	Ship.	Rule.	Ship.	Rule.	Ship.	Rule.	Ship.
Item.	Ship.	Rule.	Ship.	Rule.	Ship.	Rule.	Ship.	Rule.	Ship.
COAMING									
Height above top of DECK	2'-6"	2'-0"	B.A. 9 x 3 1/2 x 46						
Thickness									
Sides	.44	.44							
Ends	.44	.44							
SHIFTING BEAMS OR WEB PLATES									
Number	One	One							
Section and Scantlings	Plate @ centre = 12 x 32								
Material	Four angles 3 1/2 x 3 x 42								
* FORE AND AFTERS									
Number	No fore & afters								
Section and Scantlings									
Material									
HATCHES Thickness	3	2 1/2	Steel Covers .60						
Remarks									

\* The depth of Fore and Afters should be stated from the underside of the hatches in all cases.  
(If the sill of the lowest side scuttle will be less than 6 inches above the Indian Summer Load Line if assigned under the tables, state vertical distance from top of deck at side amidships to lower edge of lowest side scuttle.)

The following information is to be given in all Cases of vessels dealt with under Paras. 11, 12 (under 15 feet Moulded depth) and under Shelter Deck

What is the thickness of the Bridge Sheerstrake? *✓* Strake between Main and Bridge Sheerstrakes? *✓*

Delete the words *The Crew are, are not, berthed in the bridge house. Poop.*

The arrangements to enable them to get backwards and forwards from their quarters are, are not satisfactory.

Length of Bulwarks in well

Area of Freeing Ports required by Para. 11 (e) each side of vessel

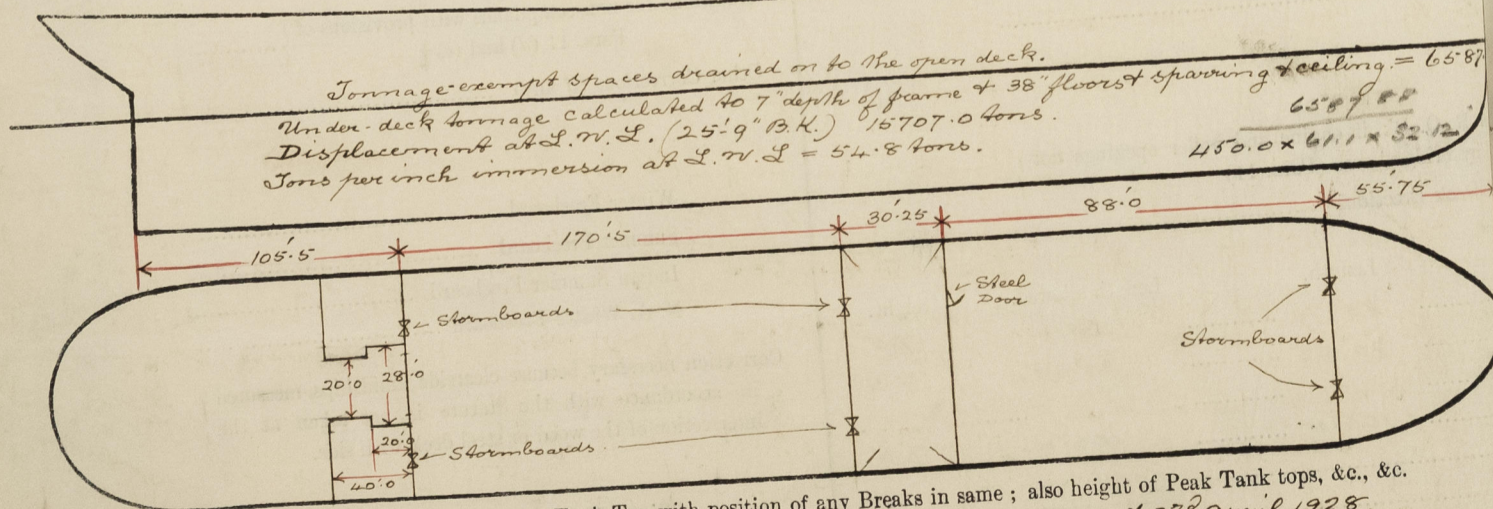
Ft.	Tenths.	Ft.	Tenths.	No.	Freeing Ports
7.6	60	7.5	75	3 = 13.5	(each side of vessel)
A.E.	Semi-circular 3'-8"	x	1.25	x 1 = 4.25	
	11-9"	x	.75	x 1	
	11-6"	x	.75	x 2 = 30.375	
	5-9"	x	.75	x 1 = 4.25	Total deficiency or excess =
	Semi-circular 3'-8"	x	1.25	x 1	

Gangway fitted between Poop & Forecastle  
 $F.E. = 17.6$   
 $A.E. = 34.1$   
 $= 51.7$  Sq. ft.

$F.E. = 17.75$   
 $A.E. = 34.62$   
 $= 52.37$  Sq. ft.

*Forecastle only.*

*67 Sq. ft.*



Show hereon line of Floors or Tank Top with position of any Breaks in same; also height of Peak Tank tops, &c., &c.  
 Provisional assignments dated 16<sup>th</sup> March 1928. + 3<sup>rd</sup> April 1928.

State any special features in the construction of the Vessel *Tanker. approved plans in London Office.*

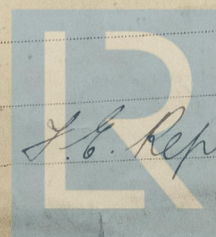
Builder's name and yard number *Swan Hunter & Wigham Richardson Ltd. No. 135*

Names of sister vessels *None*

Owners

Address *11 : 18 : 4*

Received by me *See L.B. Report*



© 2021

Lloyd's Register Foundation