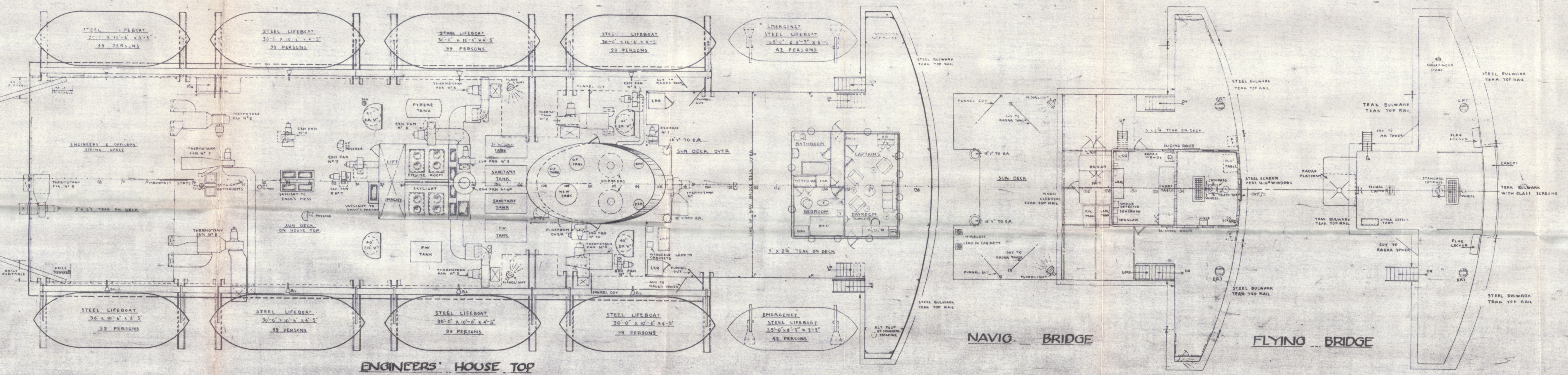
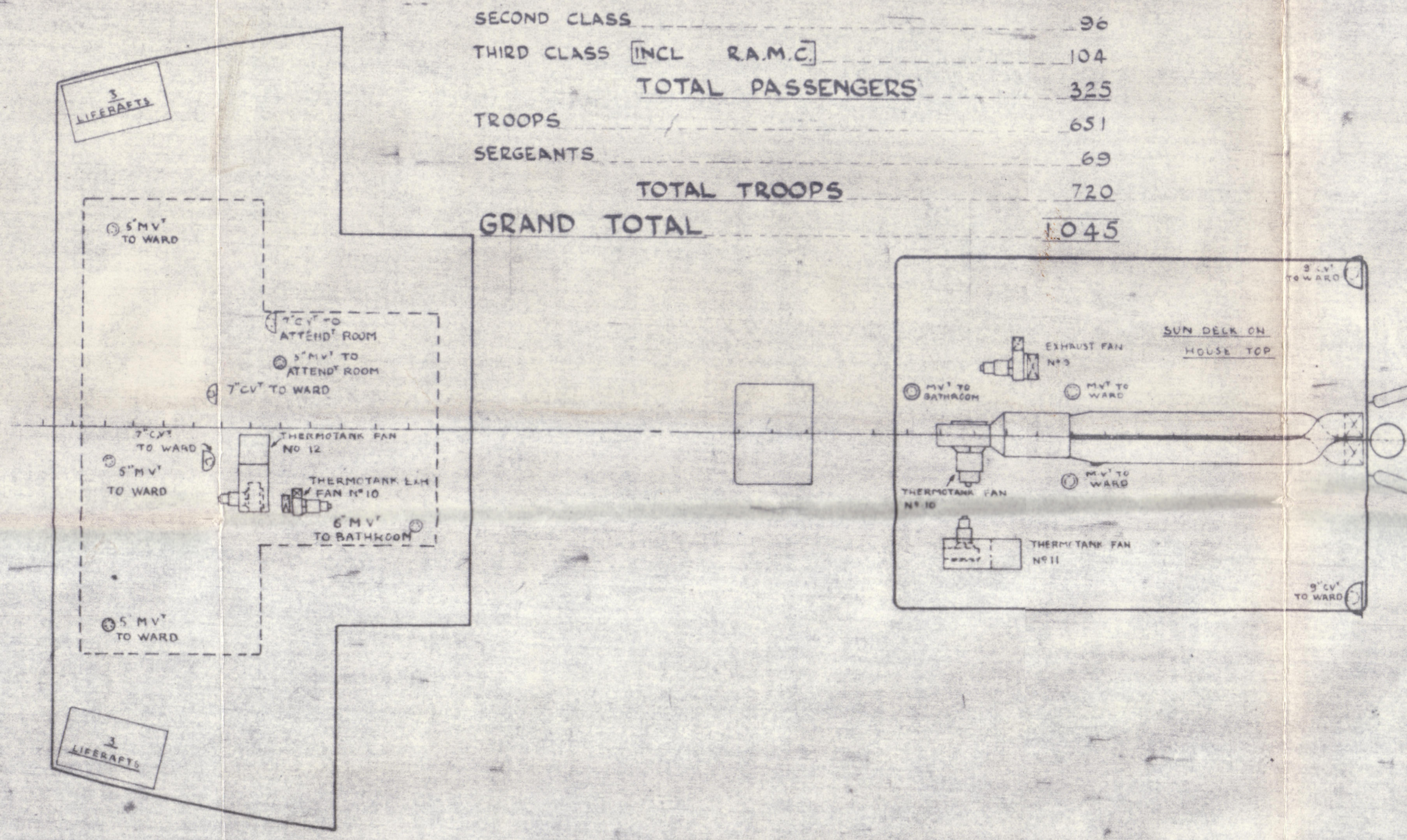


T.S.M.S. "DUNERA" GENERAL ARRANGEMENT SHEET NO. 1 MLD DIMS: 490'-0" x 63'-0" x 35'-0"

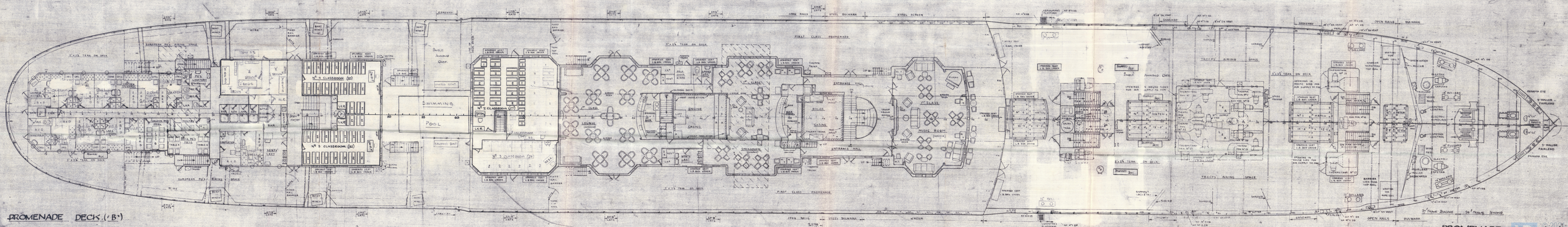
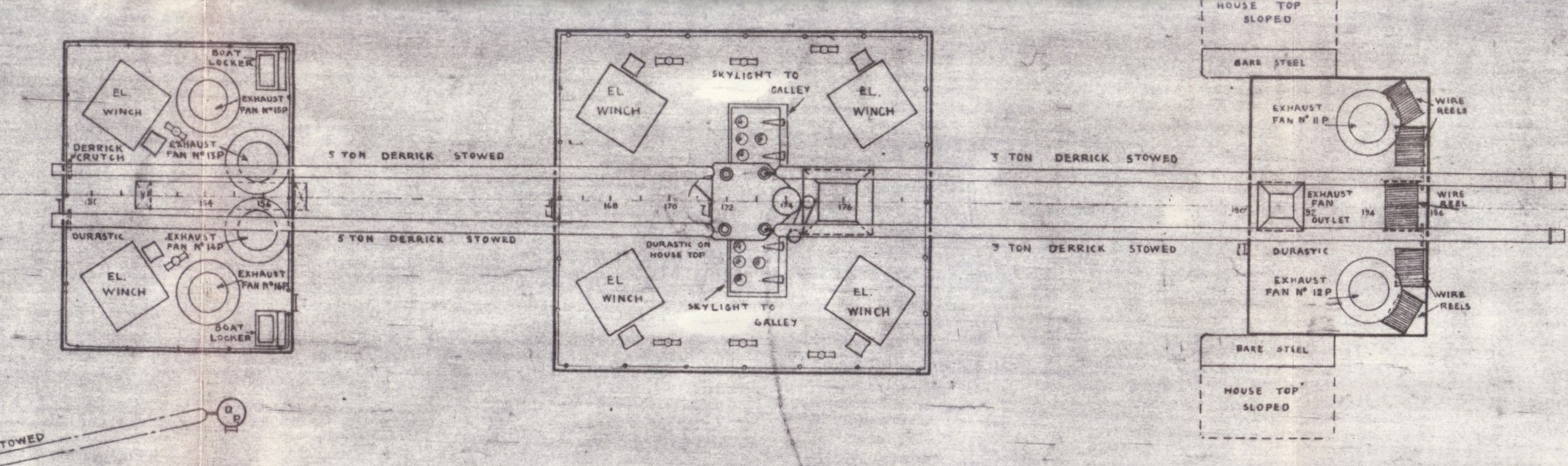
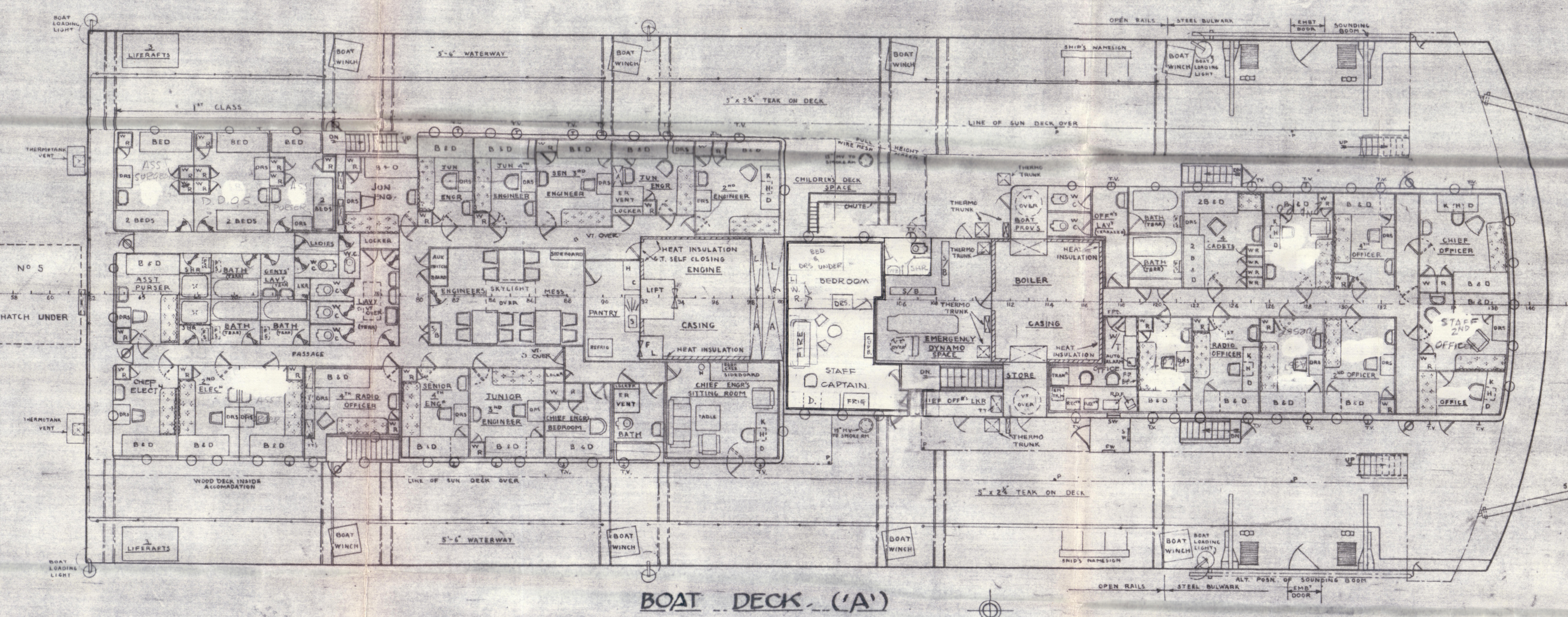
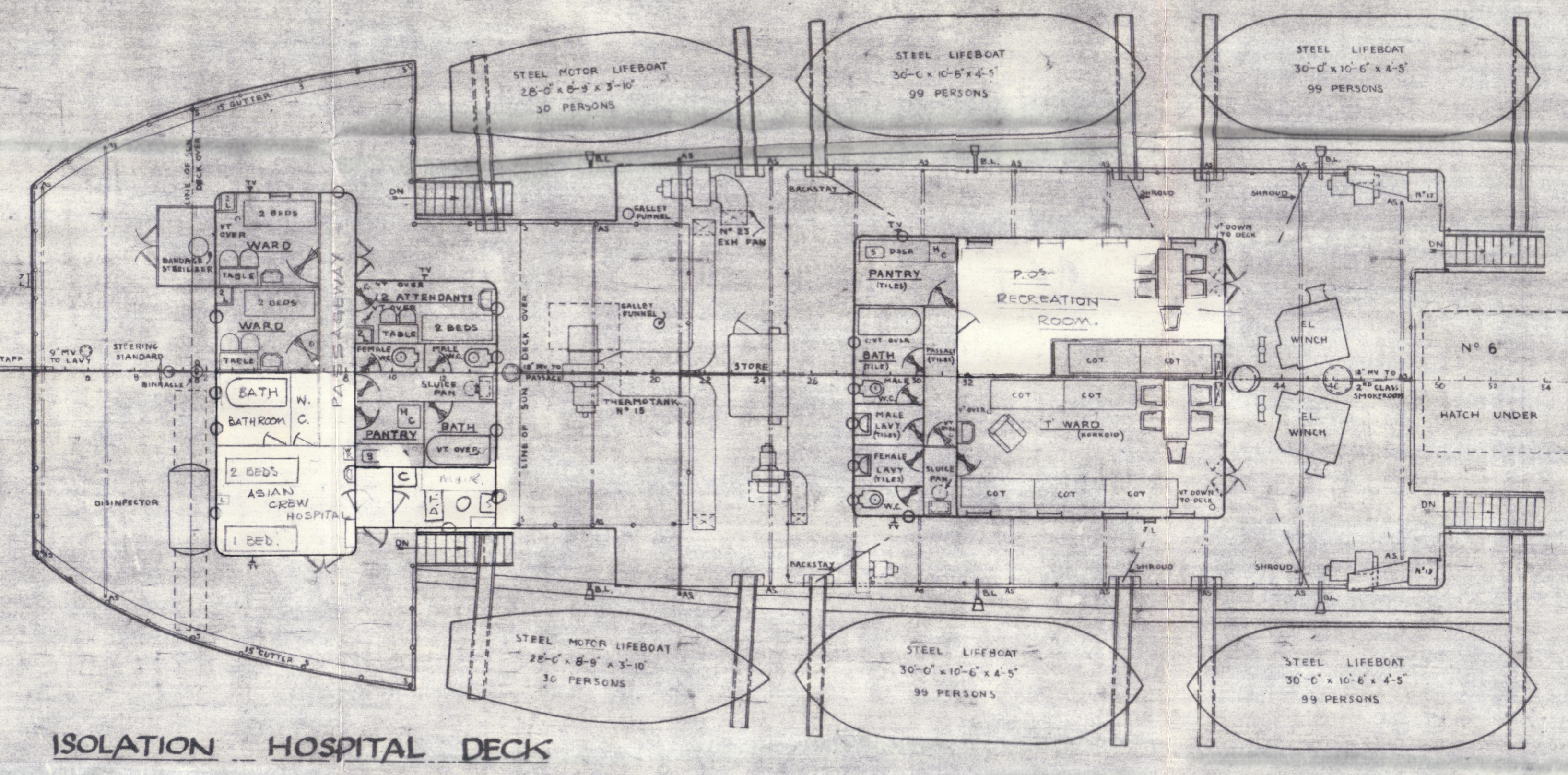
SCALE 1/8" = ONE FOOT

SUMMARY OF PASSENGERS & TROOPS

FIRST CLASS	125
SECOND CLASS	90
THIRD CLASS (INCL. R.A.M.C.)	104
TOTAL PASSENGERS	325
TROOPS	651
SERGEANTS	69
TOTAL TROOPS	720
GRAND TOTAL	1,045



NAVIC. BRIDGE
FLYING BRIDGE



PROMENADE DECK (B)

"DUNERA"

Rpt. No. 117900
NEWCASTLE-ON-TYNE, No.

GENERAL ARRGT.
SHEET 1.

S/MS " DUNERA "	
TO ACCOMPANY	Dwg. Rpt. No. 117900
Dated	25/4/61.
SUBJECT:- General Arrt (3 sheets)	

© 2021

Lloyd's Register
Foundation

004425-004431-0092