

Lloyd's Register of Shipping.

Index No. 36616
(For London Office only).

3 SEP 1941

SURVEYS FOR FREEBOARD.

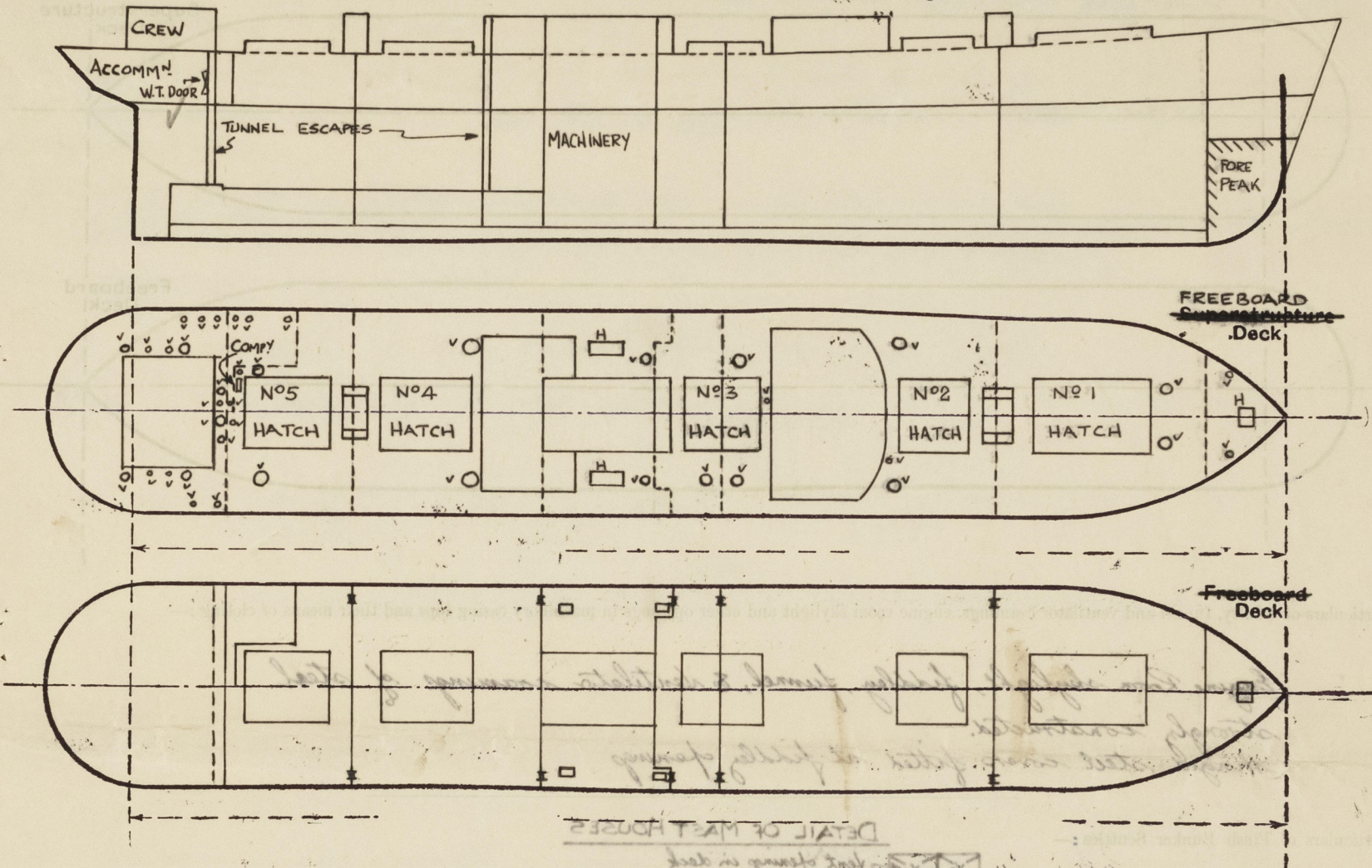
Nº 33.187

(CONDITIONS OF ASSIGNMENT.)

"HAPPY MARINER"

Ship's Name EMPIRE WYCLIF Port of Survey Sunderland
Official Number 168923 Surveyor's Signature R.M. Wilson
Nationality and Port of Registry BRITISH, SUNDERLAND. Date of Survey While Building.

Disposition and dimensions of superstructures, trunks, deckhouses and machinery casings to be inserted in the diagrams and tabular statement:—



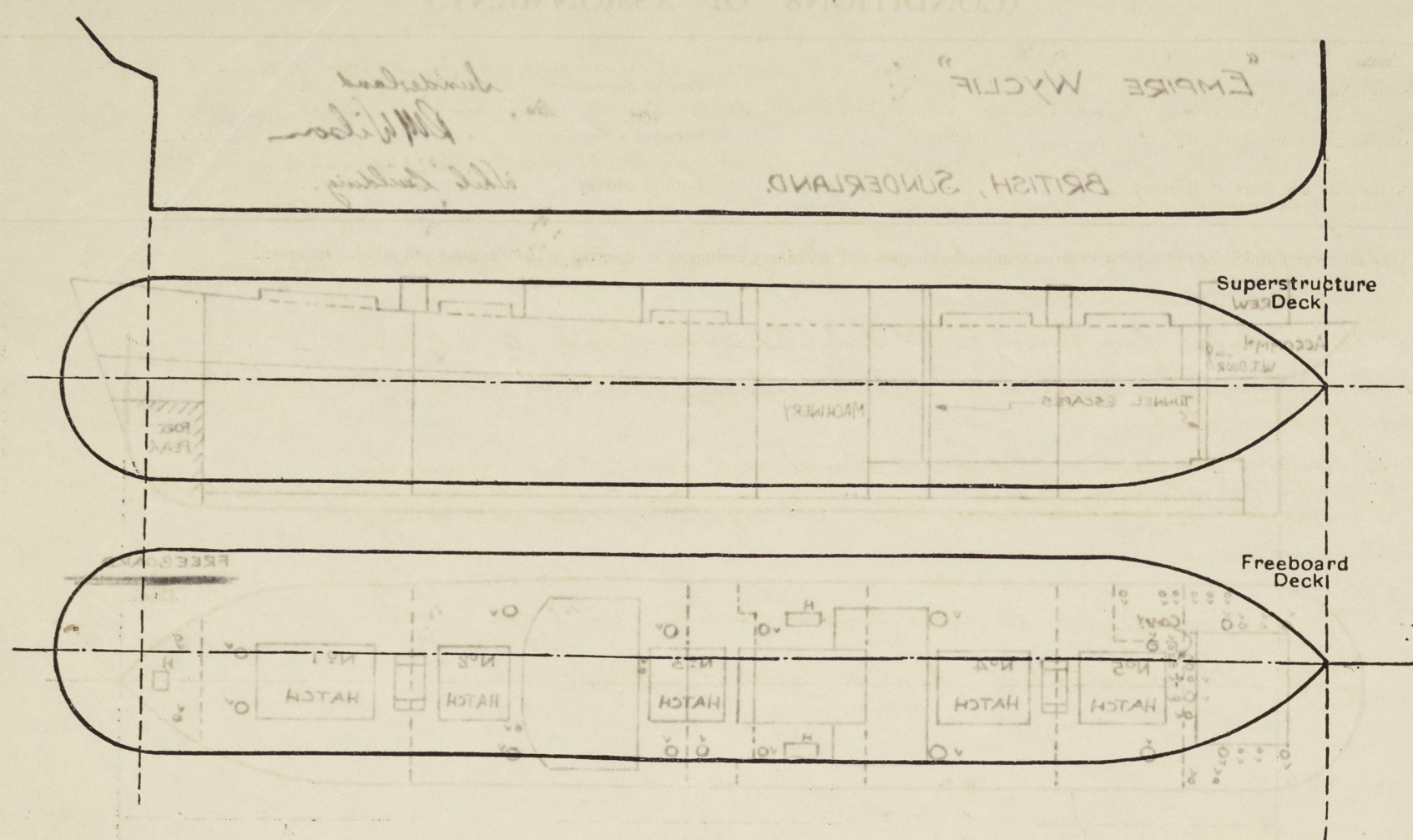
Particulars of Superstructures, Trunks, Casings, Deckhouses.								
	Coaming	Plating	Stiffeners	Spacing	End Attachments of Stiffeners	Size of Openings	Height of Sills	Height of Casings
Peep Bulkheads IN TWEEN DECKS...	26"	26"	5" x 3" x 3/8 OA	26" TO 30"	JOINTER RIVET TO BOUNDARIES	4'-7" x 3'-1"	19"	8'-9"
Raised Quarter Deck Bulkhead ...	✓	✓						
Bridge, After Bulkhead ...	✓	✓						
Bridge, Forward Bulkhead ...	✓	✓						
Forecastle Bulkhead ...	✓	✓						
Trunk, Aft ...	✓	✓						
Trunk, Forward ...	✓	✓						
Exposed Machinery Casings on Freeboard or Raised Quarter Decks ...	36"	32"	3 1/2" x 3 1/2" x 7/16	31"	CONTINUOUS	4'-6" x 1'-11"	24"	7'-10"
Exposed Machinery Casings on Superstructure Decks ...	✓	✓						
Machinery Casings within Superstructures not fitted with Class I Closing Appliances ...	AFT 30"	30"	3" x 3" x 3/8	30"		4'-6" x 1'-11"	24"	7'-10"
Deckhouses on Flush Deck Ships ...	FORWARD 30"	30"	6 x 3 1/2" x 3/8 OA 9 x 3 1/2" x 3/8 BA	30" TO 36"	BRACKETS T&B	4'-11" x 1'-11"	18"	7'-10"

Particulars of Closing Appliances (state if capable of being manipulated from both sides).

Peep Bulkheads IN TWEEN DECKS...	30" Bolted steel plate secured by 3/4" bolts spaced 3 1/2". Opening in forward T.O. bulkhead, riveted covers.
Raised Quarter Deck Bulkhead ...	✓
Bridge, After Bulkhead ...	✓
Bridge, Forward Bulkhead ...	✓
Forecastle Bulkhead ...	✓
Exposed Machinery Casings on Freeboard or Raised Quarter Decks ...	Hinged steel doors operated from both sides
Exposed Machinery Casings on Superstructure Decks ...	✓
Machinery Casings within Superstructures not fitted with Class I Closing Appliances ...	✓
Deckhouses on Flush Deck Ships ...	Hinged steel doors operated from both sides

PARTICULARS OF PROTECTION TO OPENINGS, ETC.

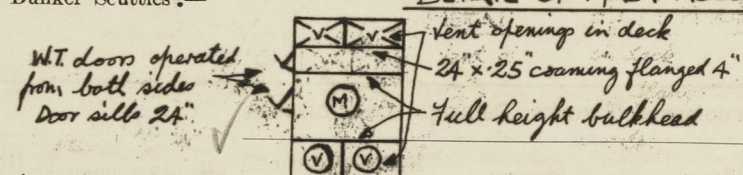
The following diagrams should be used to indicate the positions of cargo and coaling hatchways, gangway, cargo and coaling ports, ventilators, companionways, etc., which would affect the seaworthiness of the ship:—



Particulars of fiddley, funnel and ventilator coamings, engine room skylight and other openings in machinery casing tops and their means of closing:—

Engine Room skylight, fiddley, funnel, & ventilator coamings of steel strongly constructed.
Hinged steel covers fitted at fiddley openings

Particulars of Flush Bunker Scuttles:—



Particulars of Companionways:—

Companionway to lower accommodation aft on freeboard deck
32 plating, 2" coaming, 32" hinged steel door operated from both sides

Particulars of Ventilators in exposed positions on freeboard and superstructure decks:—

2	bowl vents 7" dia.	coaming 36" x 36"	to hold store
2	" 20"	36" x 40"	" hold
2	" 20"	33" x 40"	" hold
2	" 7"	36" x 36"	" midship stores
2	" 20"	33" x 40"	" hold
1	" 20"	33" x 40"	" Bunker
2	" 15"	33" x 40"	" "
2	" 20"	108" x 40"	(stayed) to hold
2	" 20"	33" x 40"	to hold
1	" 12"	36" x 34"	Funnel escape
5	" 9"	35" x 32"	lower accommodation
2	" 6"	35" x 36"	steering gear
2	S.D. Machine 6"	13" x 36"	lower accommodation
13	" 5"	13" x 30"	" "

Ventilators fitted with wood plugs and canvas covers

Particulars of Air Pipes in exposed positions on freeboard, raised quarter, or superstructure decks:—

6	Air pipes 5" dia.	30" height to lip C.I.
2	" 4 1/2"	30" " " "
1	" 4"	30" " " "
1	" 3 1/2"	30" " " "
6	" 3"	30" " " "
1	" 1 1/2"	30" " " "

Air pipes fitted with wood plugs.

Particulars of Gangway Cargo and Coaling Ports:—

NONE

Particulars of Scuppers and Sanitary Discharge Pipes:—

6-6 x 2 1/2" scupper cut in stringer angle, to drain freeboard deck.
8-4 dia. discharges from houses above freeboard deck led to N.R. valves in tween decks.
4-1 1/4"; 8-2"; 1-3/4", discharges from houses above freeboard deck led through shell below freeboard deck, open ended.
1-1 1/2" scupper from refrigeration chamber on 2nd deck, with attached screw down plug and led below 2nd deck to N.R. valve, and controlled from freeboard deck.
1-1 1/4" discharge from Pantry on 2nd deck led under 2nd deck to N.R. valve, and controlled from freeboard deck.
1-4" discharge from Accommodation on 2nd deck led through shell with S.D.N.R. valve controlled from freeboard deck.
1-1 1/4" discharge from basin on 2nd deck led through shell above 2nd deck, open ended, with N.R. valve controlled from freeboard deck.
1-2" scupper from shower on 2nd deck with screw down plug controlled at shower.
12-3" scupper from Cargo tween decks led to bilge, with self closing cock at E.R. only, valve controlled from freeboard deck.

Particulars of Side Scuttles:—

10" dia. sidelights to crew accommodation in tween decks, fitted with substantial hinged steel deadlights.

Vertical distance of Sill of lowest Side Scuttle above top of keel 37'-0"

Particulars of Guard Rails:—

3'-6" high, 3 rods; stanchions spaced about 5'-0" apart.
Steel bulwark fitted in way of accommodation and at fore end of vessel.

Particulars of Gangways, Lifelines, etc.:—

Fittings for lifelines fitted P & S.
2 1/2" lifelines supplied for one side only.

Particulars of Freeing Arrangements.

	Length of Bulwark	Height of Bulwark	Size of Freeing Ports	Number each side	Area each side	Rule area each side
After Well ...	✓					
Forward Well ...	✓					

State position of each freeing port ... After Well:— ✓
(F. and A. position and height above deck edge) Forward Well:— ✓

State whether the freeing ports are fitted with shutters, bars, or rails, and give particulars of such:— ✓

Additional area where sheer is less than standard. ✓

PARTICULARS OF PROTECTION TO OPENINGS, ETC.

HATCHWAYS ON FREEBOARD AND SUPERSTRUCTURE DECKS.									
Description of Hatchway		No 1	No 2, 4, 5	No 3	BUNKER HATCHES				
Dimensions of Hatchway		36' x 20'	36'-2" x 20'	25'10" x 20'	10' x 3'-6"				
COAMINGS	Height above Deck	30"			30"	Hatch to stow forward 3'-1" x 2'-6" x 40'			
	Thickness	50"	do.	do.	50"	28" high, covers 2 3/8", cleats, 2 tarpaulins.			
	Sides	44"			do.				
	Ends	44"							
	Stiffeners	9 x 3 1/2 x 44L				Bunker Hatch on casing top 18'-0" x 6'-0"			
	Brackets, Stays	3-5 1/2 x 3 x 40L				Coaming 12' x 44", 2 3/8" covers, cleats, 2 tarpaulins.			
HATCH BEAMS	Number	5	5	3					
	Spacing	equal	equal	equal					
	Scantling and Sketch	6 x 3 1/2 x 3/8 22' x 35' 6 x 3 1/2 x 3/8	6 x 3 1/2 x 3/8 19' x 35' 6 x 3 1/2 x 3/8	6 x 3 1/2 x 3/8 20' x 35' 6 x 3 1/2 x 3/8					
	Bearing Surface	3 1/4"	3 1/4"	3 1/4"					
FORE AND AFTERS	Number								
	Spacing								
	Unsupported Lengths								
	Scantling and Sketch		NONE						
	Bearing Surface								
HATCH COVERS	Material	W.W.	W.W.	W.W.	W.W.				
	Thickness	2 3/8"	2 3/8"	2 7/8"	2 3/8"				
	How fitted	F&A	F&A	F&A	F&A				
	Bearing Surface	6"	6"	6"	3"				
Spacing of Cleats		24"	do.	do.	do.				
Number of Tarpaulins		2	do.	do.	do.				

*Are we wood fore and afters steel shod at all bearing surfaces? ☒

Are battens and wedges efficient and in good condition? ☒

Are tarpaulins in good condition and in accordance with rule requirements? ☒

Are lashings provided in accordance with rule requirements? ☒

4 plate hts at aft end Nos 1, 4 B 5 & fore end of Nos 2 B 5

1 " " " fore " " 1 B 3 & aft end No 3

2 " " " aft " " No 2.

6 x 3 1/2 x 40 OA rest bars at hatch ends.

Particulars of any special features :—

The vessel has been built to scantling as per plans approved 24-10-40.
in order to obtain a draught of 18' in excess of that permitted
by the Rules for a C. S. S. vessel having a tonnage opening. ✓

Endorsement at first survey and at surveys for renewal of Certificate :—

The fittings and appliances are in accordance with the particulars shown on this form (or as now modified) and are in good condition.