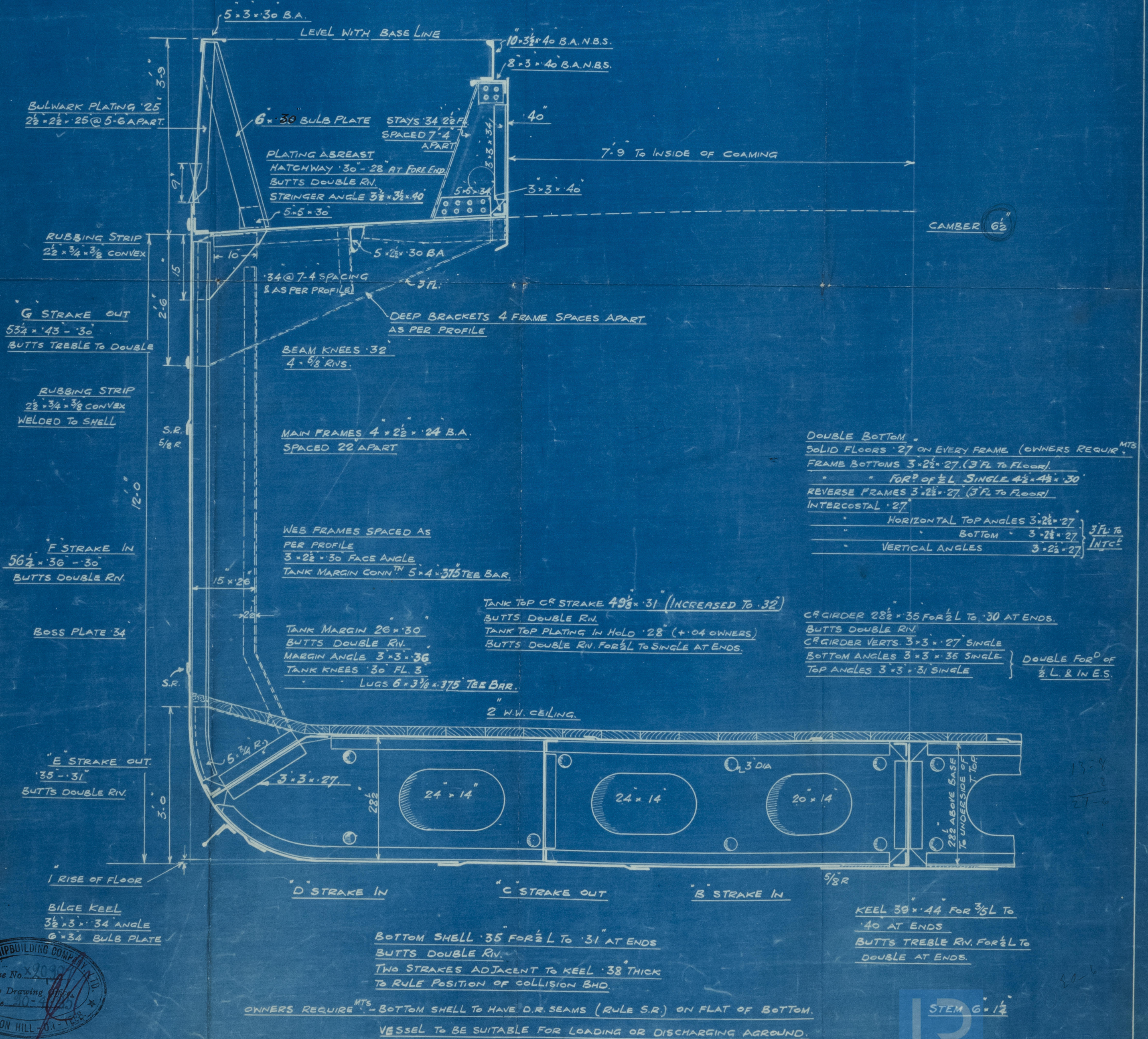


- N° 245 - ~ MIDSHIP SECTION ~

DIMENSIONS 160'-0" B.P. x 27'-6" BREADTH MLD. x 12'-0" MLD. TO UPPER D.
TO CLASS 100. A.I. AT LLOYDS. SCALE $\frac{3}{4}$ " = 1 FOOT.

LLOYDS NUMERALS.

1. DEPTH D. = 12'-0"
2. FIRST NUMERAL = $L \times D = 160 \times 12 = 1920$
SECOND = $L \times (B+D) = 160 \times (27.5+12) = 6320$
3. PROPORTIONS $\frac{L}{D} = \frac{160}{12} = 13.3$
4. FRAMING DEPTH $d = 9.46$
RULE HEIGHT OF FRAME KNEE = 32
 $\frac{1}{2}$ DIFFERENCE BETWEEN RULE & ACTUAL HEIGHTS = 2



T. No. 902.

004418-004425-0110

FURNESS S.B. Co.

No 245

S/S "CRAGSIDE"

MIDSHIP SECTION AS BUILT.

S.S. Cragside
MDB. RPT. No. 15405.

Glynn Boat

© 2020

Lloyd's Register
Foundation

004418-004425-0110