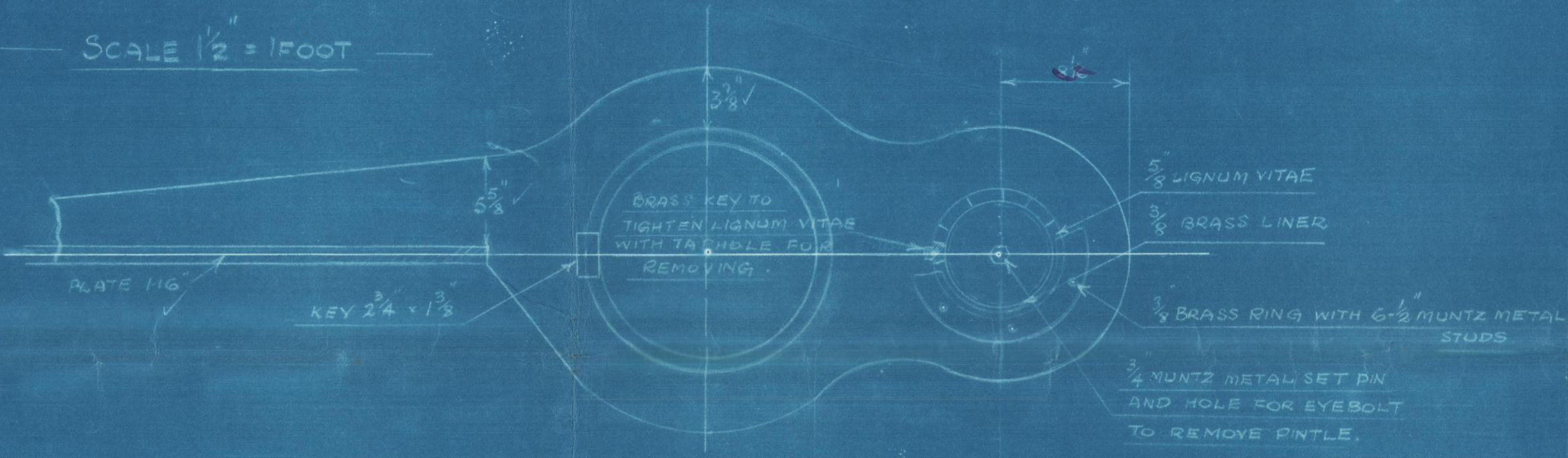


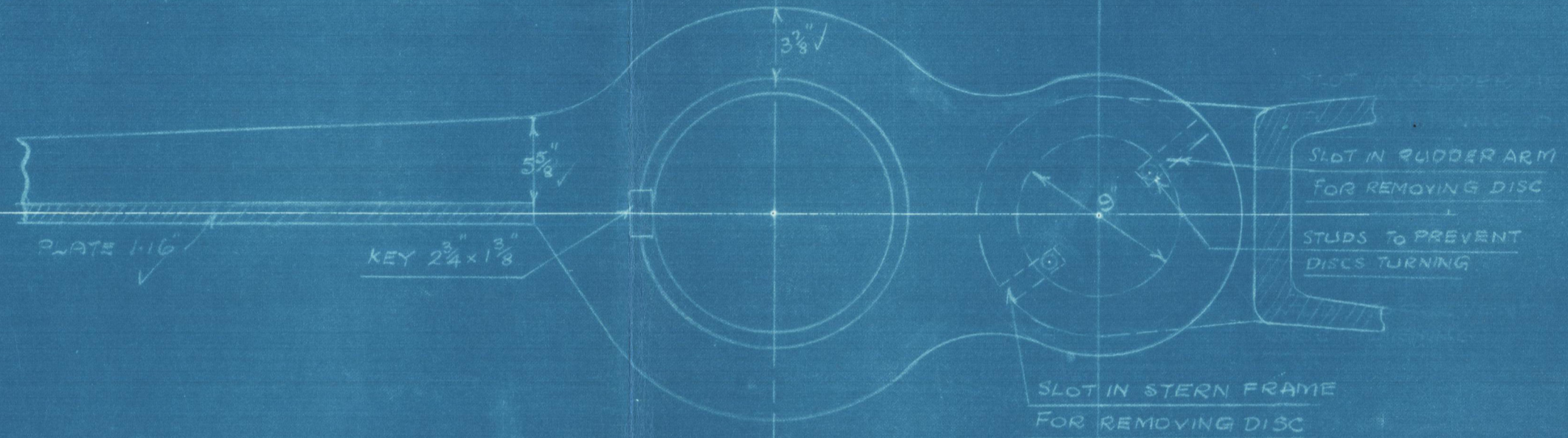
10-2-27

DETAIL OF ARMS

SCALE 1/2" = 1 FOOT

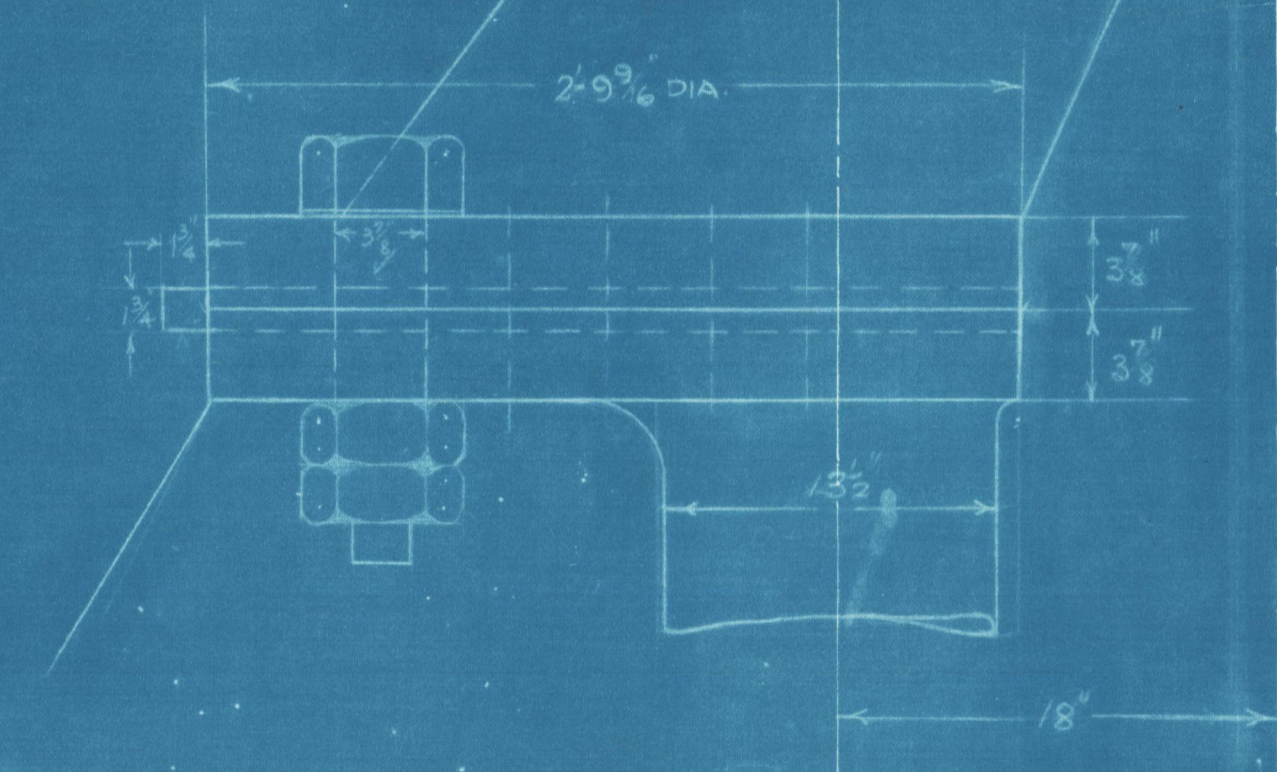


DETAIL OF BEARING ARM



DETAIL OF COUPLING

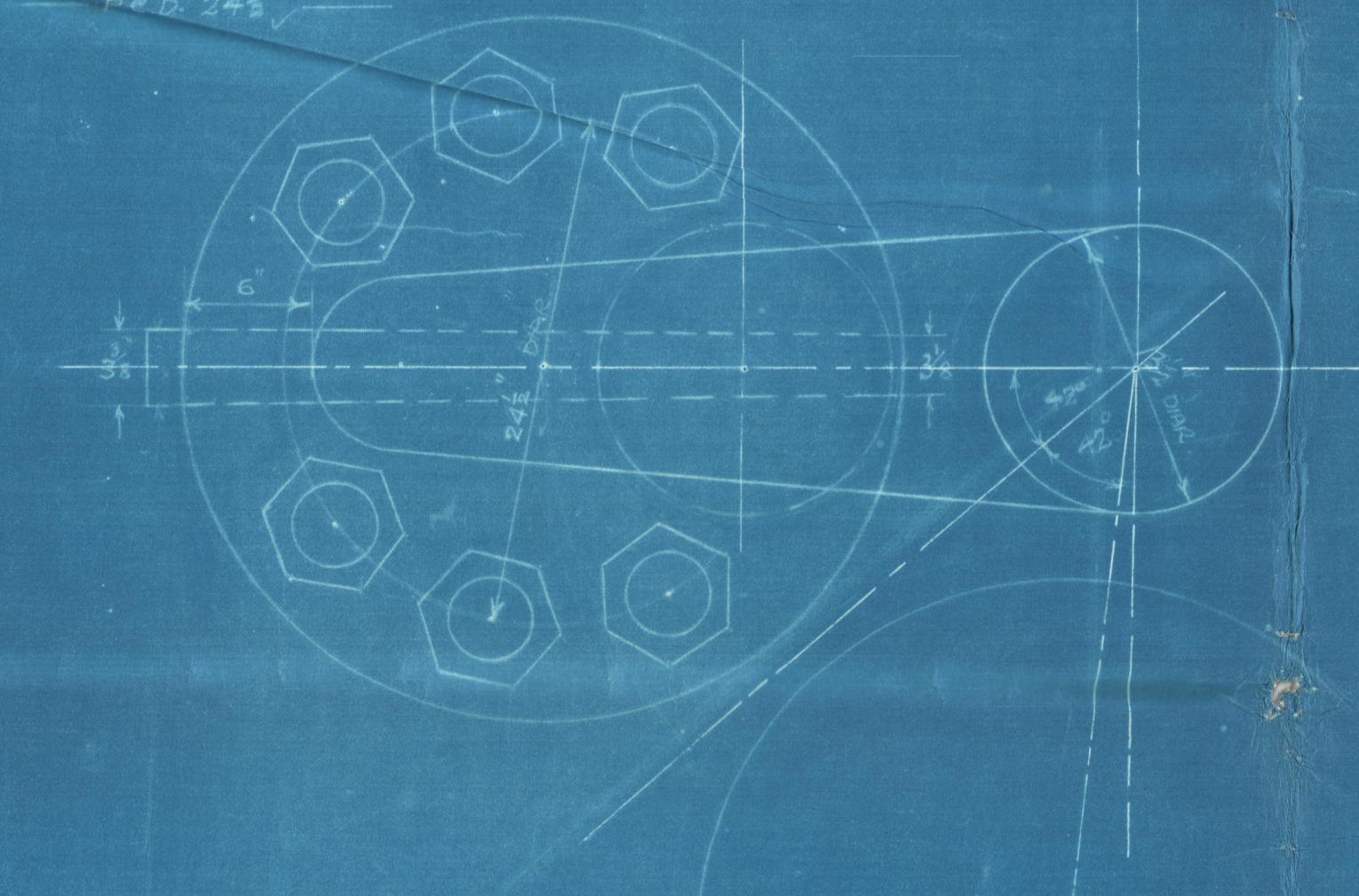
SCALE 1/2" = 1 FOOT



COUPLING 2 1/2\"/>

6 BOLTS 3/8\"/>

PLATE 2 1/4\"/>

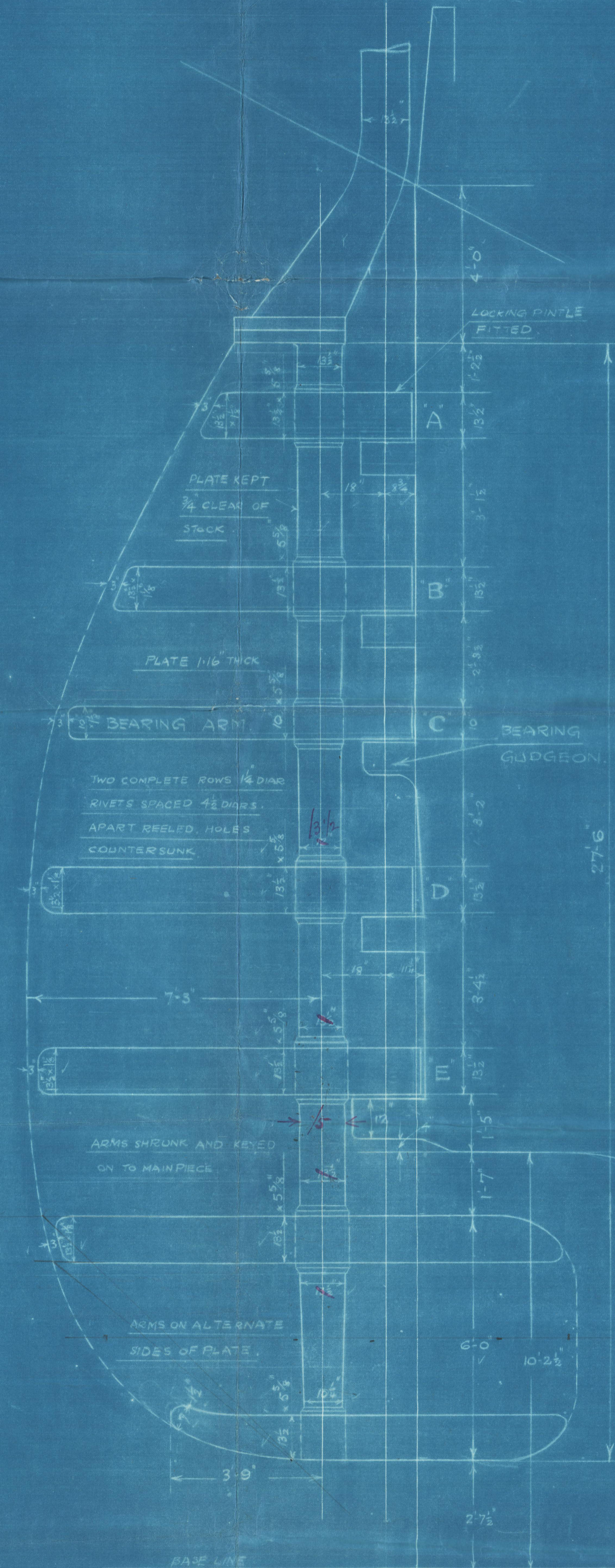


Nos. 1317 & 19 SHIPS.

RUDDER FRAME

SCALE 1/2" = 1 FOOT

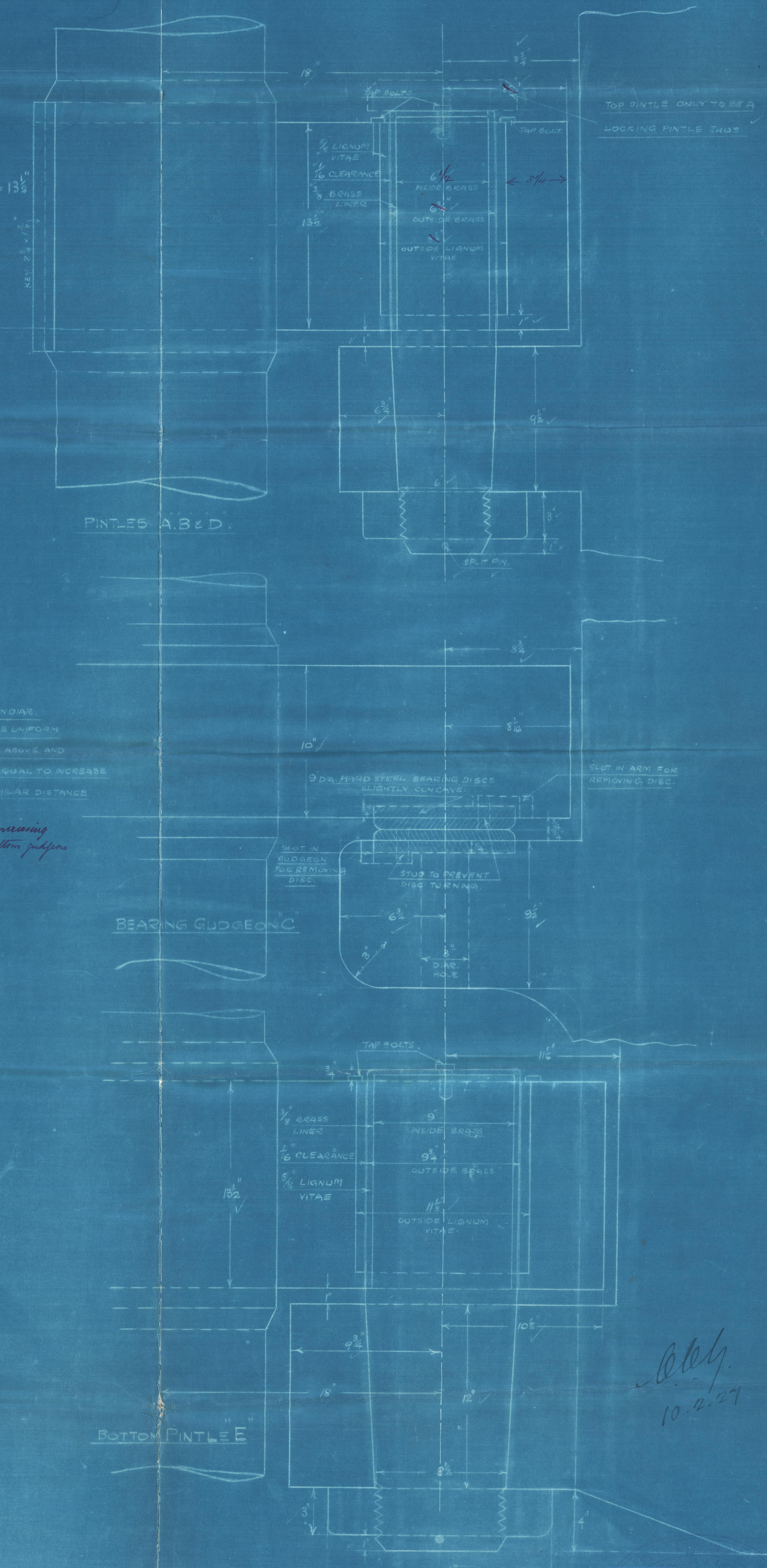
RUDDER FRAME OF FORGED IRON OR STEEL TO PASS LLOYD'S TESTS.
 AREA ABAFT FORE EDGE OF MAINPOST = 175.74
 AREA OF LOWER PORTION BETWEEN FORE EDGE OF POST AND CR. OF PINTLES = 56.44
 C OF G OF ABOVE = 4.228
 $A \times D = 181 \times 4.228 = 765.174$
 SERVICE SPEED OF SHIP 14 1/2 KNOTS. RULE DIA OF STOCK 13 1/2" OWNERS EXTRA = 13 1/2"



MAINPIECE TO BE INCREASED 10% NO. 18
 IN WAY OF ARMS. THE INCREASE TO BE UNIFORM
 ALL ROUND MAINPIECE AND TO EXTEND ABOVE AND
 BELOW EACH ARM FOR A DISTANCE EQUAL TO INCREASE
 IN DIA. AND THEN TAPERED OVER A SIMILAR DISTANCE
 INTO NORMAL DIA. OF MAINPIECE
*Note: special provision to be made for increasing
 mainpiece in way of arms above bottom gudgeon*

DETAILS OF PINTLES

SCALE 3/4" = 1 FOOT



10-2-27

(5)

Stem Frame

no 1317. 1319.

Rudder Frame.

G. S. S. "Zealandic"

NEWCASTLE ON TYNE.



WRECK

Report No. 82545.

**PLANS TRANSFERRED
TO SISTER VESSEL**

M. V. COPTIC.

NEWCASTLE ON TYNE.

Report No. 82968.



© 2020

Lloyd's Register

004417-004417-0043