

Dimensions =  $129.54 \times 19.2 \times 10.975 \times 8.53$   
 $425'-0" \times 63'-0" \times 36'-0" \times 28'-0"$

### Scantling Numerals.

$$\begin{array}{rcl} L \times D & = & 129.54 \cdot 10.975 = 1422 \\ L \times (B+D) & = & 129.54 \cdot 30.17 = 3908 \\ L/D & \text{to Upper deck} & \frac{129.54}{10.975} = 11.8. \\ L/D & \text{to Bridge deck} & \frac{129.54}{13.72} = 9.45. \end{array}$$

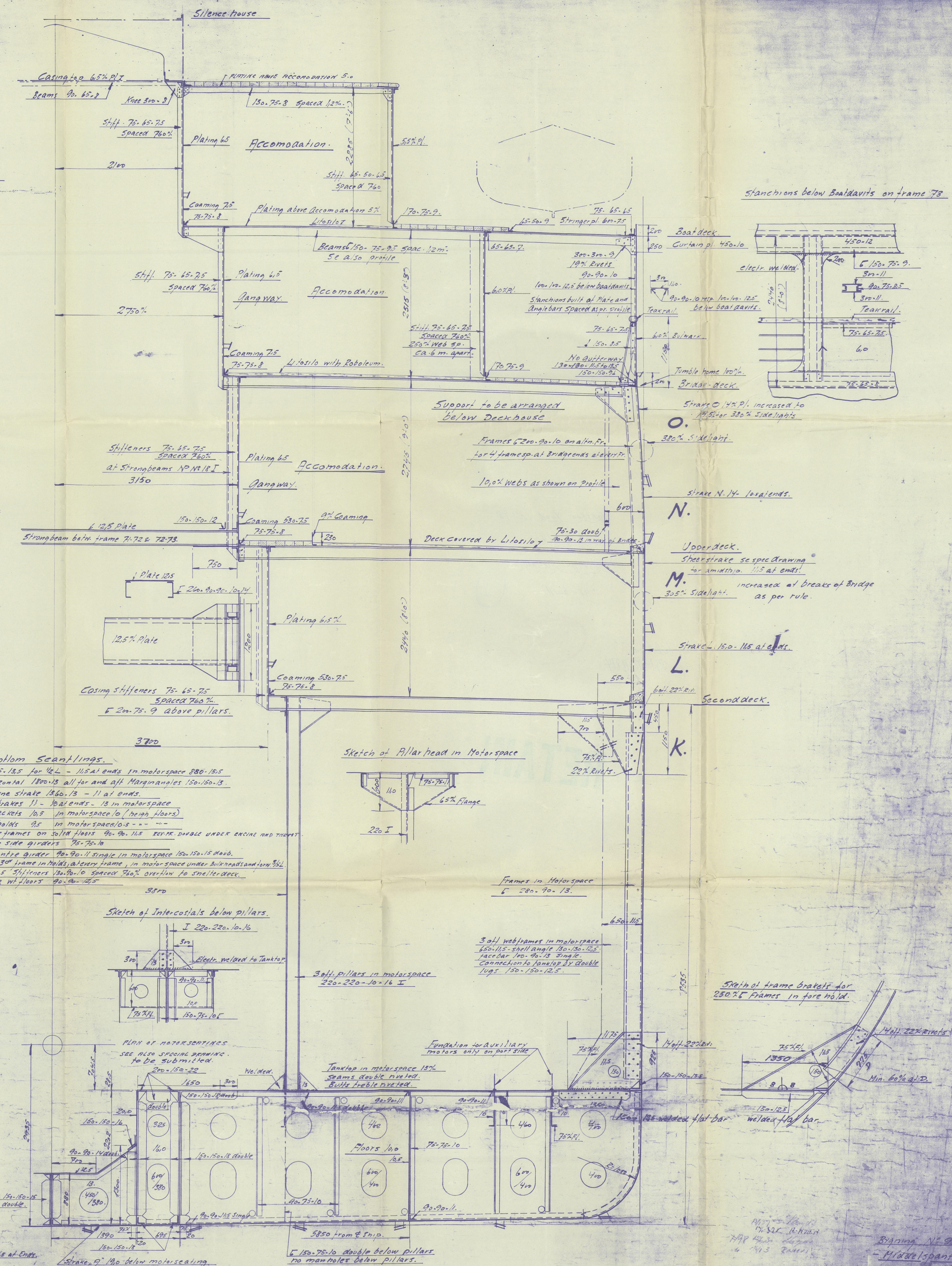
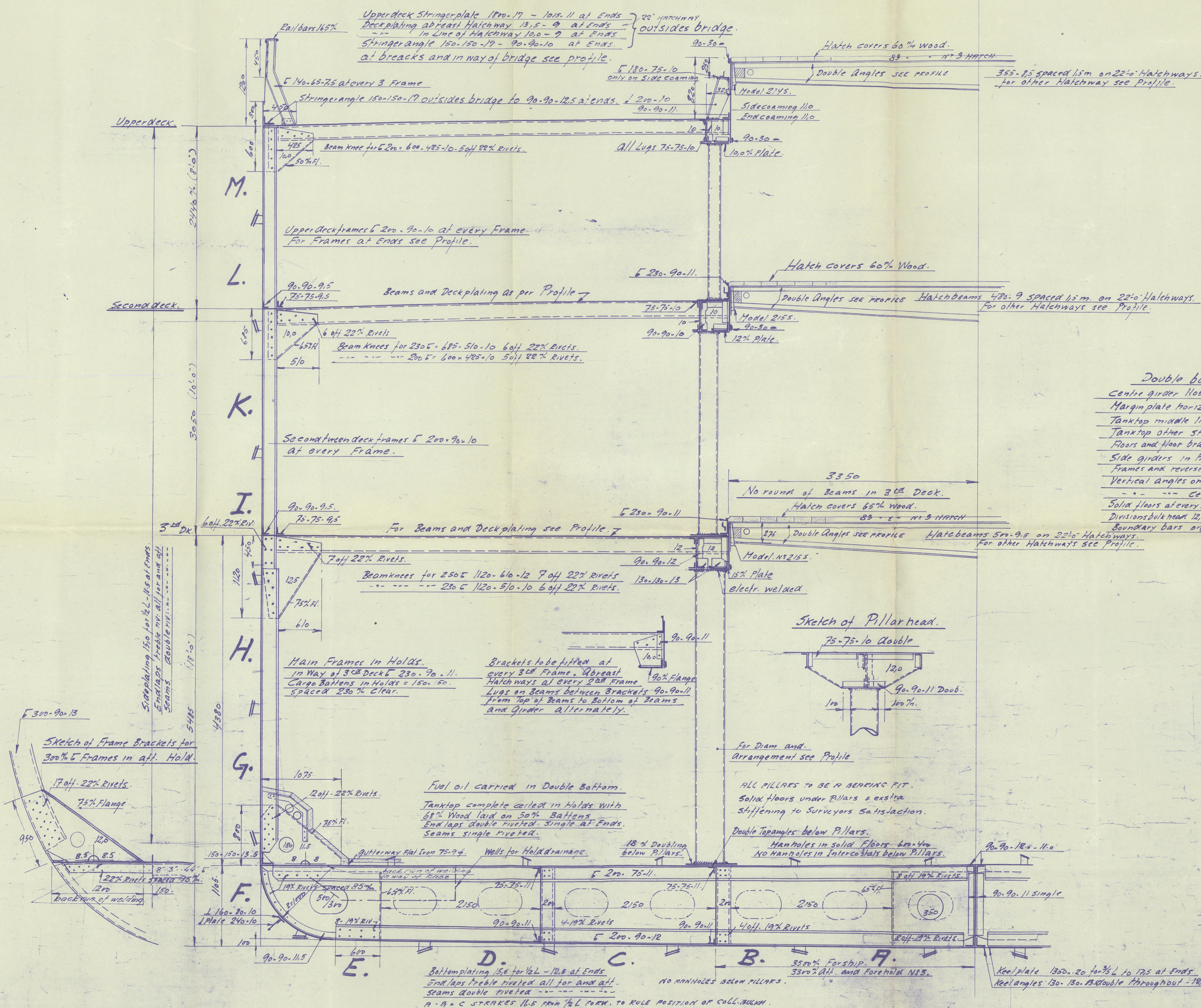
Forecastle	50
------------	----

Deckhouses 113

Bridge 115

Total = 4186

2 44' stockless anchors each 3220 kg. coll. weight 1150 kg.  
 1 -- -- anchor 3330 kg.  
 1 -- -- stream anchor 1120 kg. + 25% for stock.  
 550 metres 62% stud chain cable min weight 45470 kg.  
 225 -- 127% steel wire for stream anchor 6120 kg.  
 240 -- 133% -- -- -- faw line 6124 special flexible ropes  
 4 64' 188 metres 208% Manila or 70% steel wire (houses and warps) 612 flex. ropes.



Bygning N<sup>o</sup> 98  
- Middelspant. -

1:26 21-12-36

\_\_\_\_\_



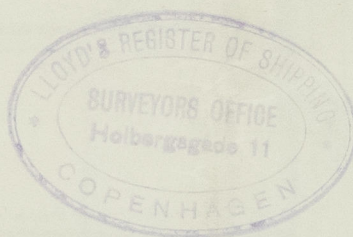
Nakskov Yard N<sup>o</sup> 98.

M/v "Falstria"

Midship Section.

"as. built"

(2)



M/s. Falstria  
Spec. Rpt. No. 11814.

RETAIN



© 2020

Lloyd's Register  
Foundation

004394-004404-0207