

AFTER DECKHOUSE TOP

PO. HOUSE TOP

BOAT DECK

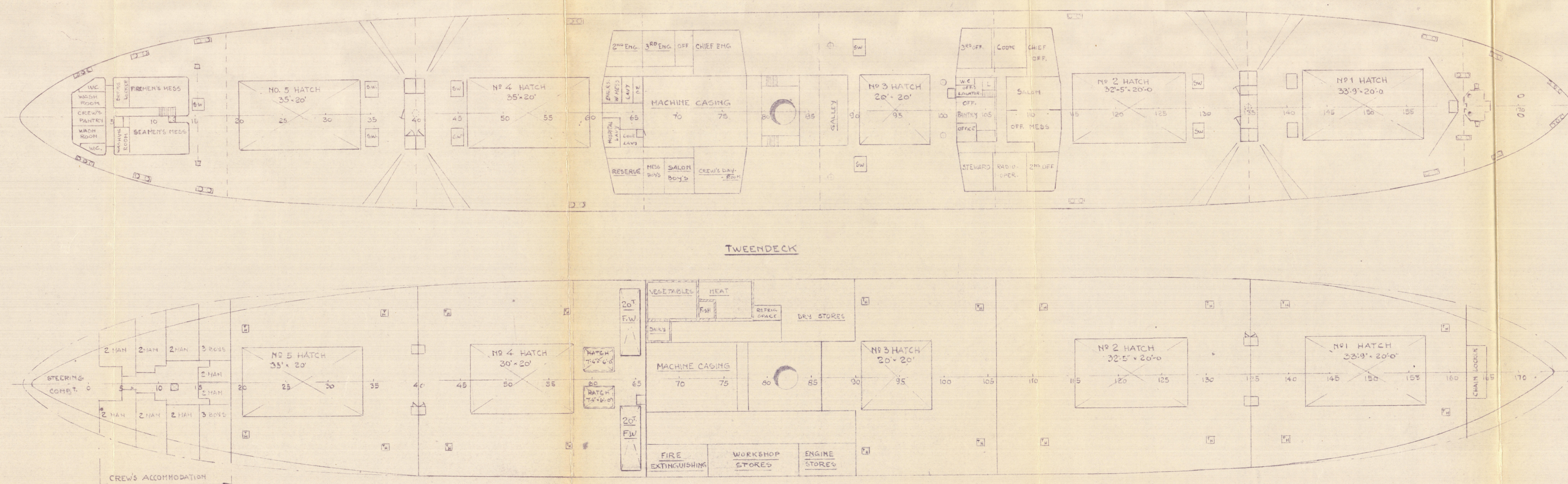
BRIDGE DECK

NAVIGATION BRIDGE

NAVIGATION HOUSE TOP

UPPER DECK

TWEENDECK



NOTE - THE INFORMATION ON THIS PLAN IS GIVEN IN GOOD FAITH BUT WITHOUT GUARANTEE OF ACCURACY.

TANK AND BUNKER CAPACITIES					
COMPARTMENT	FRAMES	LTH	CUBE FT.	TONS SALT WATER	TONS FUEL OIL
NO 1 DOUBLE BOTTOM	162-135	60'-9"	3780	108	95
2	135-106	72'-6"	10950	232	236
3	106-85	52'-6"	8380	243	213
5	66-40	65'-0"	7430	212	186
NO 6 DOUBLE BOTTOM	40-12	70'-0"	3320	95	83
DEEP TANK	60-58	20'-0"	26000	742	
DEEP TANK NO 1	162-149	29'-3"	8500	242	212
DEEP TANK NO 2	149-135	31'-6"	15800	453	395
SETTLING TANK P&S	86-76		3400		85
FORE PEAK TANK	STEEL 162	23'-0"	5130	148	
AFTER PEAK TANK	12-T	24'-0"	5750	164	
TOTAL BALLAST AND FUEL OIL				2699	1525

FRESH WATER TANKS			
TANK	FRAMES	CUBE FT.	TONS
NO 4 BOILER FEEDWATER	84-67	6750	187
FRESH WATER TANK P&S	ON TWEEN DECK	1412	40
TOTAL			227

CARGO CAPACITIES				
LENGTH	COMPARTMENT	FRAMES	GRAIN	BALES
60'-9"	NO 1 LOWER HOLD	162-135	40830	36747
72'-6"	NO 2	135-106	104080	93672
50'-0"	NO 3	106-86	68920	62028
45'-0"	NO 4	58-40	61900	55710
55'-0"	NO 5	40-16	61450	55305
	TOTAL LOWER HOLD		337180	303462
60'-9"	NO 1 TWEEN DECK	162-135	49630	44847
72'-6"	NO 2	135-106	53530	48177
	NO 3	106-86	32583	29325
65'-0"	NO 4	66-40	40320	36285
52'-6"	NO 5	40-19	30730	27657
	TOTAL TWEEN DECK		206993	186294
	GRAND TOTAL		544173	489756

HULL PARTICULARS.

LENGTH — 416'-0" BP
BREADTH — 56'-10 1/2" MLD
DEPTH — 37'-4" MLD
TYPE — CLOSED SHELTER DECKER
CLASS — LLOYDS REGISTER OF SHIPPING

WINCHES — 11 STEAM - 7" x 10"
WINDLASS — STEAM - 11" x 13"
STEERING GEAR — STEAM WITH TELEMOTOR CONTROL
WIRELESS — MACKAY TYPE 106B
GYRO — SPERRY GYRO COMPASS
RADAR — DECCA
ECHO SOUNDER — HUGHES ECHO SOUNDER M521
ACCOMMODATION — IN BRIDGE, MIDSHIP DECKHOUSE, PO'S HOUSE AFTER DECKHOUSE, & AFTER TWEEN DECK FOR CREW.

DRAUGHT — 27'-9" SUMMER
DEADWEIGHT — 10600 TON. AT SUMMER DRAUGHT
GROSS TONNAGE — 7159.19 T.
NETTO TONNAGE — 4057.99 T.

TOP OF UPPER DECK PLATING AT SIDE
21 1/2' AFT. OF FRAME 86

LOA
7' F T
7 1/2' S T
W T
DRAUGHT 27'-9"

DEADWEIGHT SCALE						
FREEBOARD IN FEET.	DEADWEIGHT IN TONS	DRAUGHT IN FEET	DISPLACEMENT IN TONS SW.	TONS PER INCH IMMERSION	MOMENT TO TRIM ONE INCH	BLOCK COEFFICIENT
9	11000	23	14230	4852	1320	.763
10	10600	27	14000	4821	1335	.756
11	10000	26	13000	4790	1271	.753
12	9000	25	12000	4760	1249	.748
13	8000	24	11000	4730	1225	.744
14	7000	23	10000	4700	1203	.740
15	6000	22	9000	4666	1179	.736
16	5000	21	8000	4635	1157	.732
17	4000	20	7000	4603	1136	.727
18	3000	19	6000	4570	1115	.722
19	2000	18	5000	4541	1094	.716
20	1000	17	4000	4508	1075	.710
21	0	16	3000	4472	1055	.704
22		15	2000	4442	1035	.699
23		14	1000	4410	1015	.694
24		13	0	4372	993	.688
25		12		4336	974	.681
26		11		4300	953	.675
27		10		4255	930	.664
28		9		4205	906	.649
29		8		4150	880	.636
30		7		4090	851	.623

REFR. PROVISION STORE TOTAL = 2730 CB. FT.

LIGHT WEIGHT 3650 T.
DRAFT 8'-2 1/2" (SEAWATER)

MACHINERY PARTICULARS			
TYPE	SINGLE SCREW TRIPLE EXPANSION	CONDENSER	3000# CONDENSING SURFACE
ENGINES	24 1/2" x 37" x 70" x 48" STROKE	DISTILLER	6000 GALS. IN 24 HOURS
BOILERS	2 - 24" W. WATER TUBE FORCED DRAFT - 220 LBS/SQ. IN. SUPERHEATED TO 450°F	GENERATOR	3 - 15 KW. SETS 6" x 4" HIGH SPEED ENG.
		PROPELLER	BRONZE VARIABLE PITCH 18' 6" DIA. x 16'-0" PITCH (MEAN) 117# SURFACE
FURNACE VOLUM	1560 CU. FT. (2 BOILERS)	AIR PUMP	24" x 26" S.A. ON MAIN ENGINE
HEATING	TOTAL HEATING SURFACE 9704# (2 BOILERS)	FEED PUMPS	2 x 12" x 6" x 24" VERTICAL SIMPLEX
SUPERHEATER	TOTAL SUPERHEATING SURFACE 529#	CIRC. PUMPS	HORIZONTAL CENT. 6" x 11" x 5" ENGINE
OIL BURNERS	TODD 4 PER BOILER	BALLAST & G.S. PUMPS	10" x 11" x 12" VERTICAL DUPLEX
DRAUGHT	ENGINE 5" x 6" 15000 C.F.M. AT 250 R.P.M. AT 100°F	FIRE & BILGE PUMPS	10" x 11" x 12"

CAPACITY PLAN

3/8 GEORGIA

OWNERS: SKIBS A/S. SONGDAL, (JOHAN GERRARD) KRISTIANSAND
CONVERTED BY: A/S ROSENBERG MEKANISKE VERKSTED
STAVANGER NORWAY.

TO ACCOMPANY *Bgm* REPORT NO. 4077.
DATED *2.55*

Capacity Plan.
GEORGIA © 2021
DRG No 40286
Foundation

RECORDS DEPT.,
LONDON.

2

"Matija Gubec" ★

Capacity Plan

Bgm 4077



© 2021

Lloyd's Register
Foundation

004387-004393-0037