

THE BRITISH CORPORATION REGISTER OF SHIPPING AND AIRCRAFT

SURVEY FOR FREEBOARD CONDITIONS OF ASSIGNMENT

SHIPS NAME **"PRINDOC"**

OFFICIAL NUMBER

Nationality and Port of Registry **BRITISH. FORT WILLIAM, ONTARIO.**

PARTICULARS OF SUPERSTRUCTURES, TRUNKS, CASINGS, DECKHOUSES

		Coaming	Plating	Stiffeners	Spacing	End Attachments	No. and size of Openings	Height of Sills	Height of Casings
Poop Bulkhead	NONE.								
R.Q.D. "	NONE.								
Bridge Aft Bulkhead	NONE.								
" Forward "	NONE.								
Forecastle Bulkhead		30"	30"	3" x 3" x 3/8"	APPROX. 32" to 36"	NIL.	2-58" x 25 3/4"	12 1/2"	4 FT
Trunk, Aft	NONE.								
" Forward	NONE.								
Exposed Machinery Casings on	} SIDES	3/16"	3/16"	2 5/8" x 2 5/8" x 1/4"	37" to 40"	BKTS AT TOP. OVERLAP DR. ANS. BTH. 1"	1 AT 66 1/2" x 24 1/2" x 8 1/2" to L.A.		
Freeboard or R.Q. Deck		FRONT 3/8"	3/8"	4" x 3" x 3/8"	31"	BKTS AT TOP EVERY 2ND STIFFENING	2-60 1/2" x 28 3/4"	16 1/2" to B.R.	7'-6"
Exposed Machinery Casings on superstructure decks	NONE.								
Machinery Casings within Superstructures not fitted with Cl. 1 closing appliances	N.A.								
Deckhouses on flush deck ships	N.A.								

PARTICULARS OF CLOSING APPLIANCES (state if capable of being manipulated from both sides)

Poop Bulkhead	NONE.	
R.Q.D. "	NONE.	
Bridge Aft Bulkhead	NONE.	
" Forward "	NONE.	
Forecastle Bulkhead		HINGED STEEL DOORS (Two) - BOTH SIDES.
Exposed Machinery Casings on	}	HINGED STEEL DOORS - BOTH SIDES.
Freeboard or R.Q. decks		
Exposed Machinery Casings on superstructure decks	NONE.	
Machinery Casings within superstructures not fitted with Cl. 1 Closing Appliances	N.A.	
Deck houses on Flush Deck ships	N.A.	

PARTICULARS OF FREEING ARRANGEMENTS

	Length of Bulwark	Height of Bulwark	No. and size of Freeing Ports each side	Area each side	Rule Area
After Well END	ABREAST AFTER HOUSE.	38 1/2" To 40" AT AFT END.	STERN FAIRLEAD OPENING 24" x 10 1/2", ALSO MOORING FAIRLEAD P. AND S. AT AFTER END.		N.A.
Forward Well	NIL.	-	-	-	-

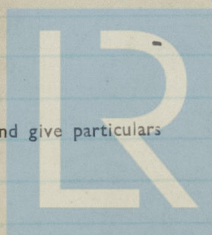
State fore and aft position and height above deck to bottom of port, for each port

After Well

Forward Well

State whether freeing ports are fitted with shutters, bars or rails, and give particulars

Give particulars of freeing port area, etc., on superstructure decks

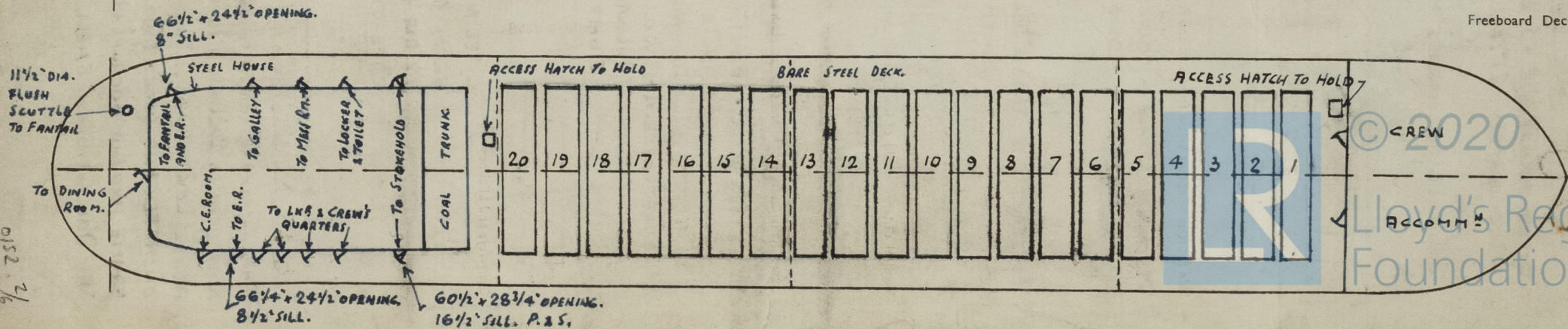
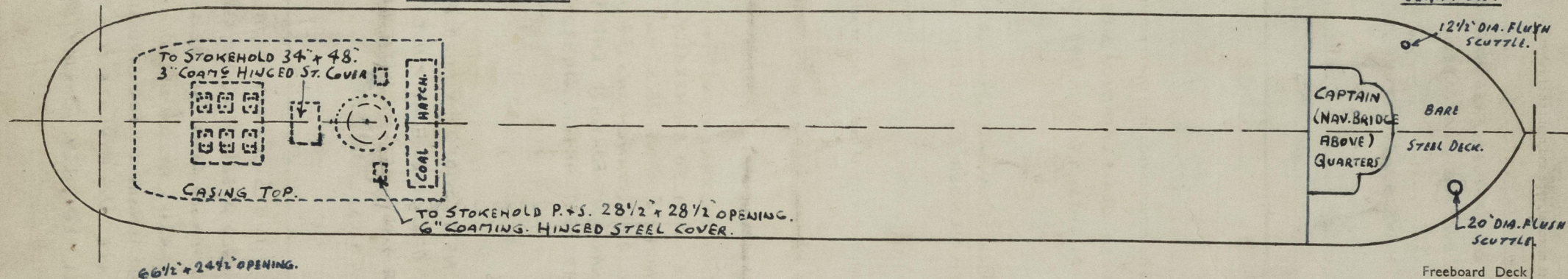
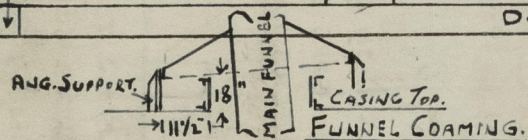
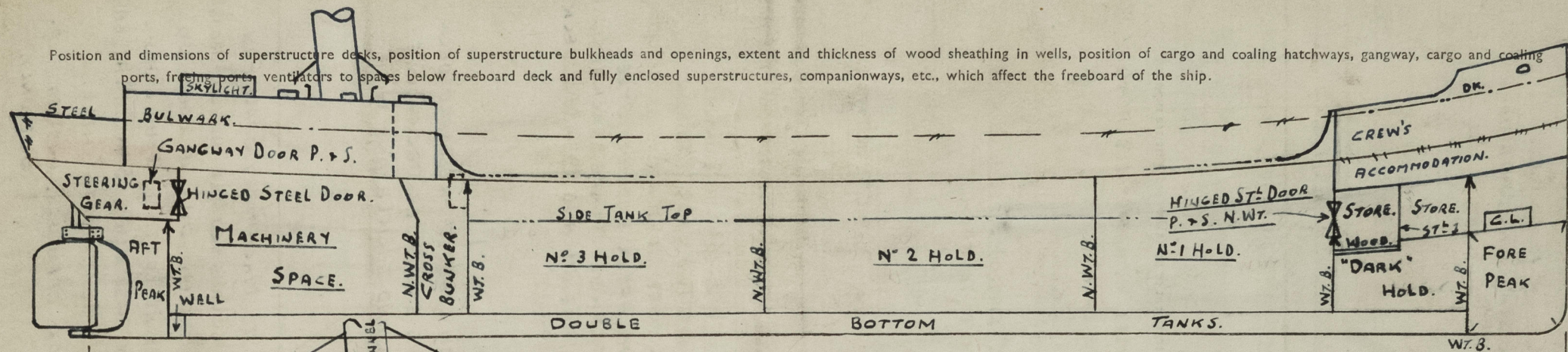


© 2020

Lloyd's Register Foundation

004374-004381-0152 1/6

Position and dimensions of superstructure decks, position of superstructure bulkheads and openings, extent and thickness of wood sheathing in wells, position of cargo and coaling hatchways, gangway, cargo and coaling ports, firing ports, ventilators to spaces below freeboard deck and fully enclosed superstructures, companionways, etc., which affect the freeboard of the ship.



PARTICULARS OF ALL HATCHWAYS ON FREEBOARD ~~AND SUPERSTRUCTURE DECKS~~

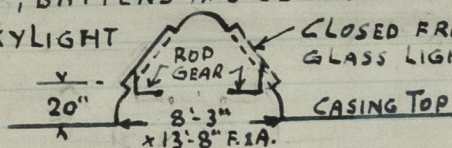
Number and description of Hatchway from forward		TWENTY CARGO HOLD HATCHWAYS.	FORWARD HOLD ACCESS HATCH.	AFTER HOLD ACCESS HATCH.
Dimensions of Hatchway		9 FT x 36'-2"	1'-8" x 1'-8"	1'-8" x 1'-8"
COAMINGS	Height above deck { steel { deck	21" AT CR.	4"	4"
	Thickness { sides { ends	15" AT SIDES. PLATED	3/8"	3/8"
	Stiffeners	3/8" / 3/8" CORNER -> L-3" x 3/8" L OK.	NIL.	NIL.
Brackets or Stays		NIL.	NIL.	NIL.
HATCH BEAMS	Number	NIL.	NIL.	NIL.
	Spacing	-	-	-
	Scantling and Sketch	-	-	-
Bearing Surface and thickness of carriers or sockets		-	-	-
ST. COVERS FLANGED FORE AND AFTERS	Number	12	NIL.	NIL.
	Spacing of 10" FLANGES	36 1/2" TO 38"	-	-
	Unsupported lengths	9 FT	-	-
	Scantling and Sketch AT CENTRE.	BOLTED 1" RIVETED 1" 10 FT -> 10 FT	-	-
Bearing Surface and thickness of carriers or sockets		-	-	-
HATCH COVERS	Material	STEEL-FLANGED 10" ONE SIDE.	STEEL	STEEL.
	Thickness	.25"	3/16"	3/16"
	How Fitted	SLIDING AT HW.	HINGED.	HINGED.
	Bearing Surface	3/4"	3/8"	3/8"
Spacing of Cleats CLIPS.		28 1/2" TO 36" 19 1/2" x 12" FROM CORNERS.	10 1/2"	10 1/2"
Number of Tarpaulins		1 PER HATCH.	RUBBER JOINT.	RUBBER JOINT.
Are tarpaulins in good condition and in accordance with rule requirements? YES.				
Are lashings provided in accordance with rule requirements? PER HATCH - 4" x 1 1/2" x 1 1/2" CHANNEL BARS. SECURED UNDER CLIPS... 4 IN WS				
Are wood fore and afters steel shod at all bearing surfaces? NONE.				
Are battens and wedges efficient and in good condition? YES. WOOD BATTENS. STEEL WEDGES ON CLIPS.				

Give full particulars of the following :—

Fiddley, Funnel and Vent Coamings, Engine Room skylight and other openings in Machinery Casing tops and their means of closing (state height of coamings, type of fiddley covers, and if these are permanently attached in their proper positions)

CASING TOP COAL BUNKER HATCHWAY-8' F.A. x 24'-9 1/2" B.A. COAMG. HINGED STEEL COVERS WITH CLEATS, BATTENS AND SECURING ARRANGEMENTS.

E.R. SKYLIGHT



CLOSED FROM INSIDE BY HINGED STEEL FLAPS (G) WITH THREE GLASS LIGHTS IN EACH FLAP.

REFER PLAN FOR DETAILS OF FIDDLEY & FUNNEL OPENINGS.

Flush Bunker Scuttles on freeboard and superstructure decks (state material, type of joints, etc., and if secured by hinge or permanent chain attachment)



FREEBOARD DK.- FLUSH SCUTTLE AFT TO FAN-TAIL
F'CLB. DECK. PORT SIDE FLUSH SCUTTLE HAS ANGLE BAR ATTACHMENT ON UNDERSIDE.
STARBOARD " " " TWO SECURING CLIPS ON UNDERSIDE.

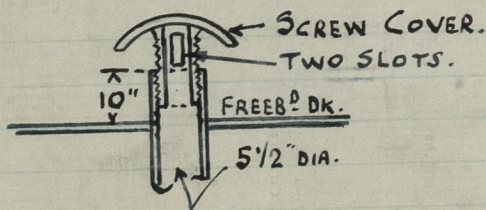
Companionways on freeboard and superstructure decks (state material, height of doorway sills, type of doors, and if these can be closed and secured from both sides)

NONE.

Ventilators in exposed positions on freeboard, ~~raised quarter and superstructure~~ decks to spaces below freeboard decks and fully enclosed superstructures enclosed by Class 1 appliances (state height of steel coamings, pitch of rivets in deck connection, type of closing arrangements)

NO VENTILATORS FITTED ON FREEBOARD OR FORECASTLE DECKS.

Airpipes in exposed positions on freeboard, ~~raised quarter and superstructure~~ decks (state height to opening and if satisfactory closing arrangements are provided)



AIR PIPES ON FREEBOARD DECK AT SIDES, LED DOWN THROUGH SIDE TANKS.



© 2020

Lloyd's Register
Foundation

0152 4/6

Scuppers and Sanitary Discharge Pipes (state material, type and number of valves)

SEVEN SCUPPERS P. & S. ON EXPOSED FREEBOARD DECK - DISCHARGING OVERBOARD APPROXIMATELY 21" BELOW FREEBOARD DECK.

SANITARY DISCHARGES HAVE STORM VALVE AT SHELL.

Side Scuttles to spaces below freeboard and superstructure decks (state type or pattern, and if permanent or portable deadlights are supplied)

MACHINERY SPACE - HINGED GLASS (FRAMED) SIDE SCUTTLES WITH PORTABLE PLATE DEADLIGHTS STOWED ADJACENT TO EACH.

FORECASTLE & 'TWEEN DECKS FORWARD - HINGED GLASS (FRAMED) SIDE SCUTTLES WITH HINGED DEADLIGHT ATTACHED TO EACH.

Vertical distance of sill of lowest side scuttle below top of freeboard deck at side amidships 6' 7" - E.R. SCUTTLE.

Guard Rails on freeboard and superstructure decks (state type and where fitted)

FREEBOARD DECK - PORTABLE STANCHIONS P. & S. - SOCKETS RIVETED TO GUNWALE ANGLE - SPACED GENERALLY 7'-6" APART. TWO S.W.R. $\frac{7}{16}$ " DIAR. TOP WIRE 35" ABOVE DECK, AND OTHER WIRE 20 1/2" ABOVE DECK.
FORECASTLE DECK - TWO RAIL STANCHIONS 34" HIGH AT AFTER END, AND STEEL BULWARK AT FORWARD END WITH FLANGED PLATE BRACKETS EIGHT FEET APART. GUARD RAILS ARE 34" AND 19" ABOVE DECK.

Gangways and Lifelines

LIFELINE PROVIDED - RIGGED F. & A. ON $\frac{1}{2}$ " ABOVE FREEBOARD DECK FROM AFT SIDE FORE MAST TO FORE END AFTER DECKHOUSE. $\frac{1}{2}$ " DIA. S.W.R. SET UP WITH BLOCKS AND TACKLE AND WITH ROPE TAILS.

Gangway, Cargo and Coaling Ports in sides of ship GANGWAY DOOR P. & S. TO MACHINERY SPACE FAN TAIL COMPARTMENT. HINGED STEEL DOOR WITH 12 1/2" DIA. GLASS SCUTTLE HINGED INBOARD & SECURED BY 2 CLIPS, AND HINGED DEADLIGHT SECURED BY 2 CLIPS. SILL OF DOOR 28" ABOVE LOWER DECK. TWO CLIPS AT TOP OF DOOR - THREE AT BOTTOM - FOUR CLIPS ON AFTER END DOOR - TWO HINGES ON FORWARD SIDE AND THREE CLIPS. 5" x 1" FLAT BAR FRAME AROUND DOOR PLATE. DOOR PLATE $\frac{3}{4}$ " THICK & JOINTED TO SHELL. DOUBLER ON SHELL LOCALLY IN WAY OF DOOR OPENINGS, AROUND TOP. SIDE ONLY.

SUPPLEMENTARY REQUIREMENTS FOR STEAMER CARRYING TIMBER DECK CARGOES

Do Superstructure and Machinery Casings comply with rules?

Is provision made for protection of steering gear?

Is emergency steering gear provided?

Are efficient sockets and eyes for lashings provided and properly spaced?

State particulars of longitudinal subdivision in double bottom

State particulars of Bulwarks and Rails

Particulars of any Special Features in the construction of the Ship

SIDE TANKS IN WAY OF CARGO HOLDS, AND PLATE ARCH WEBS
SPACED TWELVE FEET APART.

Endorsement at first survey and at surveys for Renewal of Certificate:—

The fittings and appliances are in accordance with the particulars shown in the form and are in good condition

Thos. L. Miller.

Toronto, Ont.



© 2020

Lloyd's Register
Foundation

0152 6/6