

Nº 6106. "GUJARAT."

Nº 6116. "KATHIAWAR."

Nº 6426. "LUXMI."

MIDSHIP SECTION.

SCALE $\frac{1"}{2}$ = 1 FOOT.



DIMENSIONS

LENGTH. = 370'-0" B.P.

BREADTH = 48'-0" MOULDED

DEPTH = 36'-0" MOULDED

CLASS LLOYD'S 100 A.I. (WITH FREEBOARD)

NUMERALS.

$L \times D = 370 \times 36 = 13320$

$L \times (B+D) = 370 \times 84 = 31080$

$\frac{L}{D} = \frac{370}{36} = 10.28$

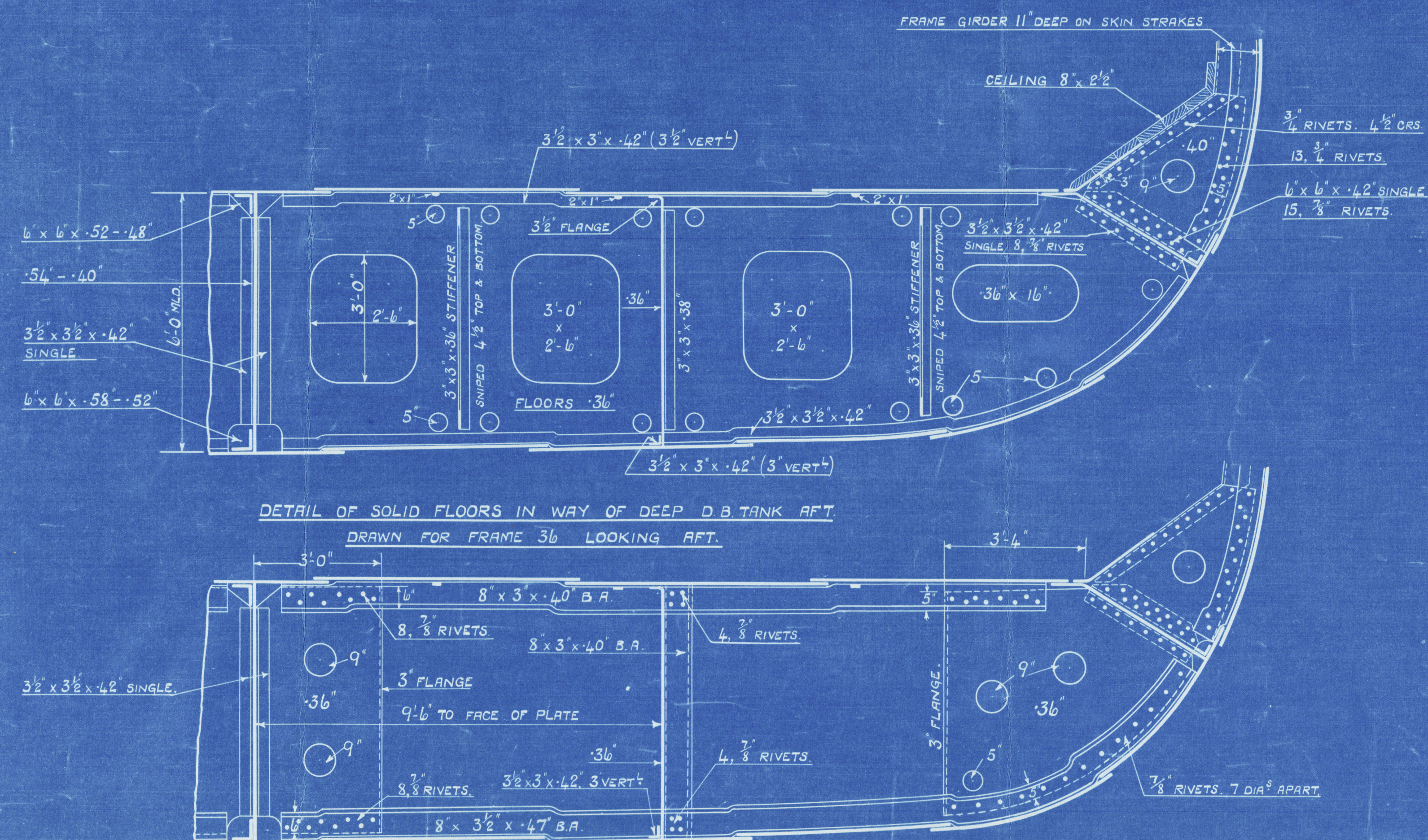
$d = 24.58'$

EQUIPMENT NUMBER			
SECOND LONGITUDINAL NUMBER	=	31080	
MAST HOUSES	64.58 x 7.75 x .50 =	250.25	
MOTOR CASING	69.66 x 8 x .50 =	278.64	
SALOON HOUSE	33.54 x 8 x .50 =	134.16	
FORECASTLE	37 x 7.75 x .75 =	215	
OFFICERS HOUSE	30.5 x 7.5 x .50 =	114.38	
EQUIPMENT Nº	=	32072.43	

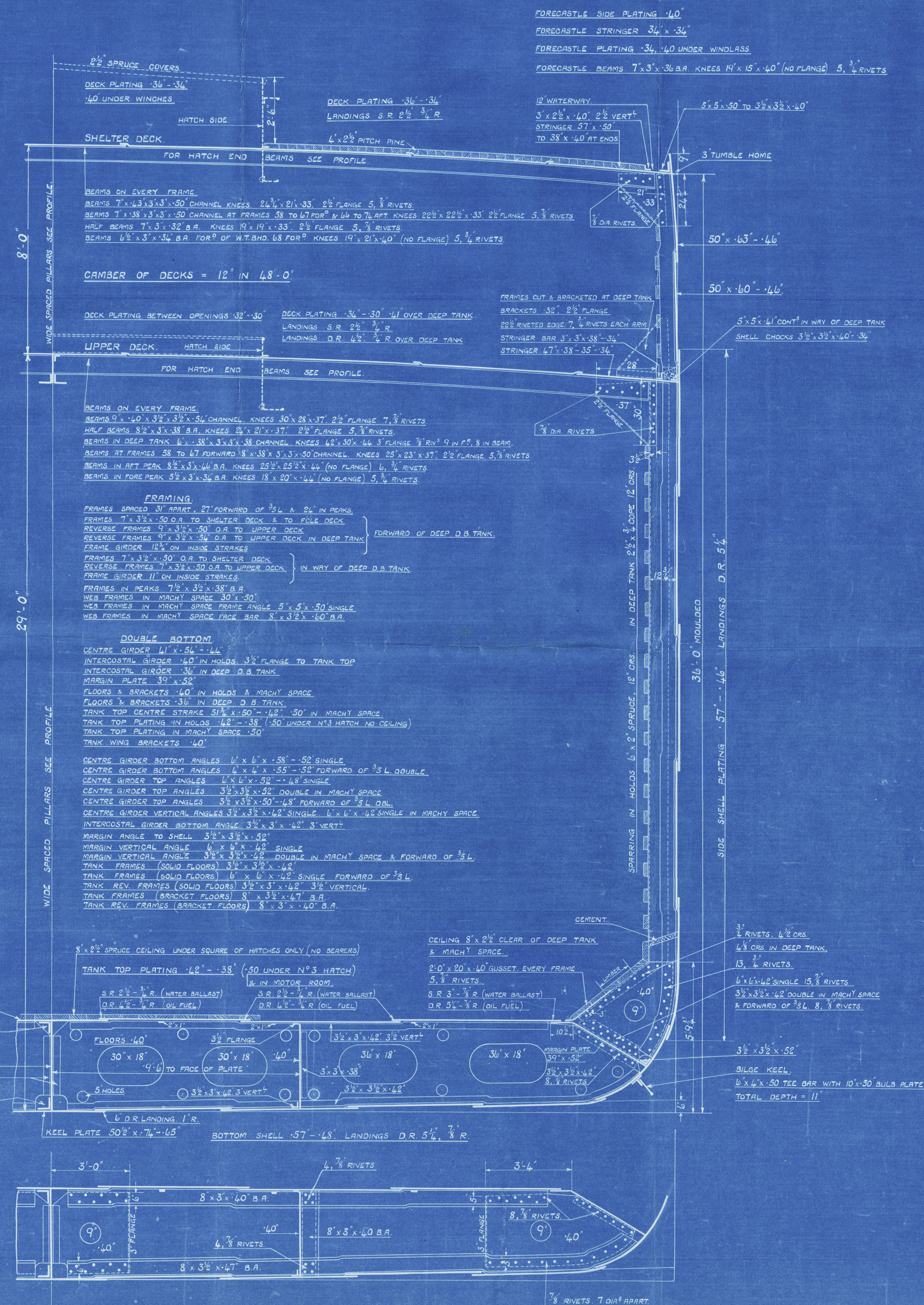
EQUIPMENT

3 BOWER ANCHORS	564 CWTs EACH		
1 STREAM ANCHOR	15 CWTs EX. STOCK		
270 FATHOMS	2 1/2" STUD CHAIN CABLE		
90 FATHOMS	4 1/2" STREAM STEEL WIRE		
90 FATHOMS	4 1/2" STEEL WIRE TOWLINE	4 @ 90 FATHOMS	3" STEEL WIRE
2 @ 90 FATHOMS	2 1/2" STEEL WIRE HAWSERS	2 @ 90	7" MANILA
2 @ 90 FATHOMS	2 1/2" STEEL WIRE WARPS	2 @ 90	8" MANILA

STERNFRAME 9' x 7 3/8" (MILD CAST STEEL)
PROPELLER POST 10 3/8" x 7 3/8" (MILD CAST STEEL)
STEM BAR 9 1/4" x 2 1/2" (ROLLED STEEL BAR)



DETAIL OF BRACKET FLOORS IN WAY OF DEEP D.B. TANK AFT.
DRAWN FOR FRAME 35 LOOKING AFT.



BRACKET FLOOR.

Midship Section

GLASGOW REPORT No. 43494

Luzmi *



© 2020

Lloyd's Register
Foundation

004364-004368-0351