

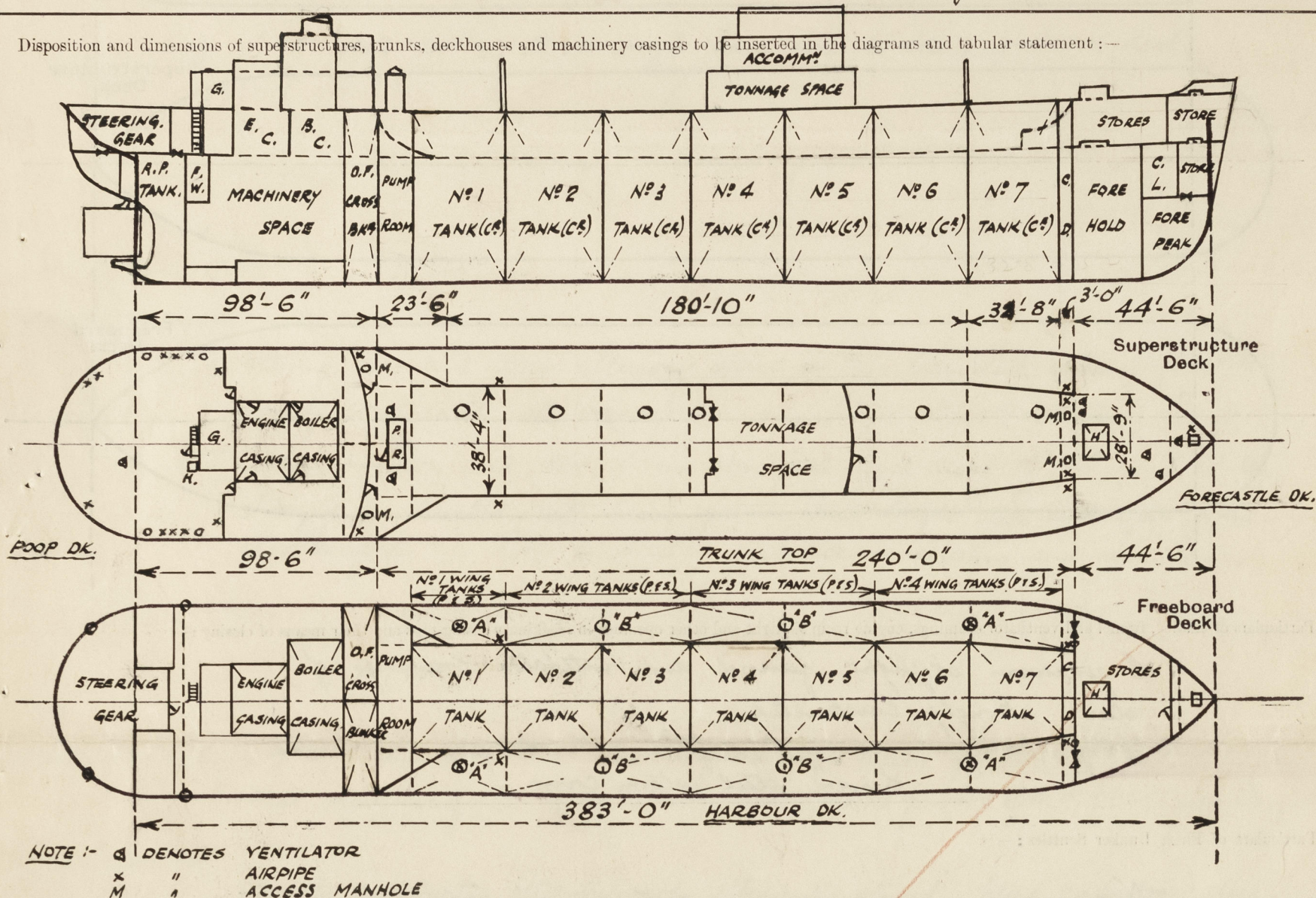
Lloyd's Register of Shipping.

SURVEYS FOR FREEBOARD.

(CONDITIONS OF ASSIGNMENT.)

N^o 34462Ship's Name *T.S.S. "GANESELLA"*Port of Survey *Sunderland.*Official Number *✓*Surveyor's Signature *D.S. Forsyth*Nationality and Port of Registry *Dutch, Willemstad.*Date of Survey *During Construction*

Disposition and dimensions of superstructures, trunks, deckhouses and machinery casings to be inserted in the diagrams and tabular statement:—



Particulars of Superstructures, Trunks, Casings, Deckhouses.

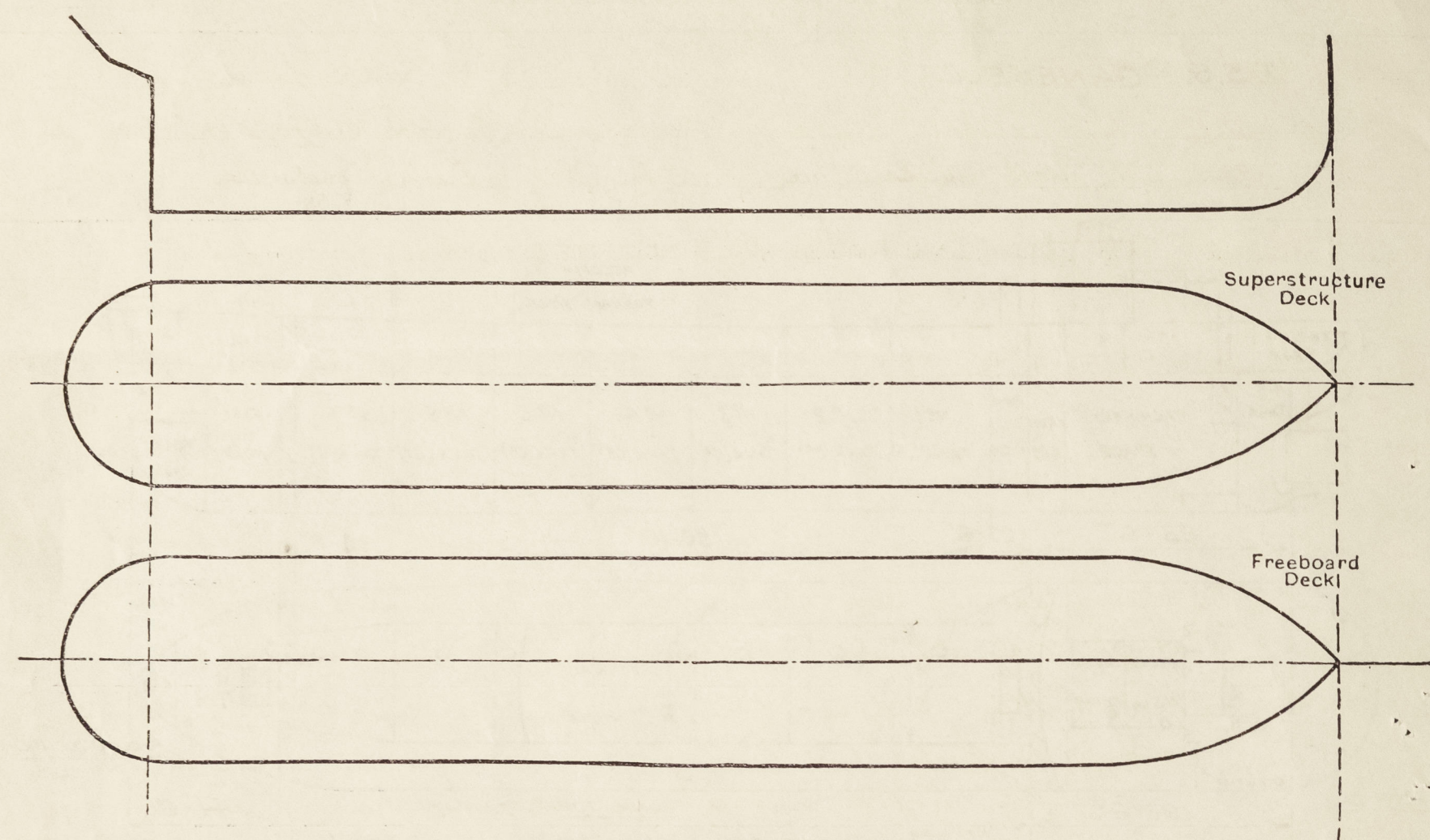
	Coaming	Plating	Stiffeners	Spacing	End Attachments of Stiffeners	Size of Openings	Height of Sills	Height of Casings
Poop Bulkhead (SLOPING) ...	-	.44"	9"x3"x.38" B.A. (HORIZ.) 82" VERT. WEBS.	2'-6" 8'-3"	Bracketted at ends	-	-	7'-6"
POOP HOUSE FOR BULKHEAD	-	.30"	5 1/2"x3"x.26" B.A.	2'-4 3/4" To 2'-8 1/2"	Lagged at top & welded at bottom	4'-6"x2'-3"	18"	7'-6"
HOUSE ON TRUNK TOP	-	.25"	3 1/2"x3"x.25" O.A.	3'-0"	None	4'-1"x3'-1"	21"	7'-6"
Bridge, After Bulkhead ...	-	.32"	5 1/2"x3"x.25" B.A.	2'-4 3/4"	Lagged at top & welded at bottom	4'-6"x2'-3"	21"	7'-6"
HOUSE ON TRUNK TOP	-	.30"	4"x3"x.34" O.A.	2'-6"	Bracketted top & bottom in way of pump	4'-1"x3'-1"	21"	7'-6"
Bridge, Forward Bulkhead ...	-	.30"	8"x3 1/2"x.44" B.A. (HORIZ.) 82" VERT. WEBS. IN EACH TANK	2'-6" 9'-2" & 11'-8"	Bracketted at ends	-	-	7'-6"
Trunk, After ... } BETWEEN FORECASTLE & POOP ...	-	.60"	8"x3 1/2"x.44" B.A. (HORIZ.) 82" VERT. WEBS. IN EACH TANK	2'-6" 9'-2" & 11'-8"	Bracketted at ends	-	-	7'-6"
Trunk, Forward ...	-	.60"	8"x3 1/2"x.44" B.A. (HORIZ.) 82" VERT. WEBS. IN EACH TANK	2'-6" 9'-2" & 11'-8"	Bracketted at ends	-	-	7'-6"
Exposed Machinery Casings on Freeboard or Raised Quarter Decks ...	✓				BRACKETTED AT TOP			
Exposed Machinery Casings on Superstructure Decks (BOAT DECK)38"	.25"	3 1/2"x3"x.25" O.A.	2'-3" & 2'-8"	NONE AT BOTTOM CONTINUOUS.	-	-	7'-6"
Machinery Casings within Superstructures not fitted with Class I Closing Appliances ...	✓							
Deckhouses on Flush Deck Ships ...	✓							

Particulars of Closing Appliances (state if capable of being manipulated from both sides).

Poop Bulkhead (SLOPING) ...	-	No Drawings.
POOP HOUSE FOR BULKHEAD	-	Hinged steel W.T. door, operated from both sides.
Raised Quarter Deck Bulkhead ...	-	3" shifting boards in full height channels.
HOUSE ON TRUNK TOP	-	Hinged steel W.T. door, operated from both sides.
Bridge, After Bulkhead ...	-	3" shifting boards in full height channels. Portable steel plates with hoop bolts
HOUSE ON TRUNK TOP	-	Hinged steel W.T. door, operated from both sides.
Bridge, Forward Bulkhead ...	-	3" shifting boards in full height channels. Portable steel plates with hoop bolts
Forecastle Bulkhead ...	-	Hinged steel door. See C.11 (Contd.) 29/10/49.
Exposed Machinery Casings on Freeboard or Raised Quarter Decks ...	-	
Exposed Machinery Casings on Superstructure Decks ...	-	
Machinery Casings within Superstructures not fitted with Class I Closing Appliances ...	-	
Deckhouses on Flush Deck Ships ...	-	

PARTICULARS OF PROTECTION TO OPENINGS, ETC.

The following diagrams should be used to indicate the positions of cargo and coaling hatchways, gangway, cargo and coaling ports, ventilators, companionways, etc., which would affect the seaworthiness of the ship:—



Particulars of fiddle, funnel and ventilator coamings, engine room skylight and other openings in machinery casing tops and their means of closing:—

Engine room skylight, funnel and ventilator coamings of steel, strongly constructed.
Fiddle openings in casing top fitted with strongly constructed hinged steel storm covers.

Particulars of Flush Bunker Scuttles:—

None

Particulars of Companionways:— Pump Room Entrance (Trunk top): Plating 30", Stiffeners (front & sides) 4"x3"x36" (after end) 3"x3"x36"; welded to deck, and bracketted or welded at top; Deck opening 5'-6"x4'-0"; 2 strong steel skylights 5'-3"x4'-0"; W.T. door (after side) 4'-6"x2'-3", 6 Topples, 18" Coaming.
On Poop Deck Strong Steel Companionway to poop tween dk., space aft. opening 4'-9"x2'-0" coaming 18", and with hinged solid hardwood door.

Particulars of Ventilators in exposed positions on freeboard and superstructure decks:—

- 1 @ 8" dia., coaming 36"x30" to F.P. Store.
- 2 @ 10" dia., coaming 36"x32" to Forecastle tween decks.
- 2 @ 10" dia., coaming 36"x32" to Hold space forward.
- 2 @ 21" dia., coaming 36"x40" to Pump room.
- 1 @ 8" dia., coaming 36"x30" to Steering gear space.
- 4 @ 6" dia., goosenecks, 36" to opening, to Stores and Poop Tween deck spaces aft.

All ventilators fitted with wood plugs and canvas covers.

Particulars of Air Pipes in exposed positions on freeboard, raised quarter, or superstructure decks:—

On Poop Forecastle and Boat decks and Trunk top to peak, D.B. and F.W. tanks, A.P. store, and Cofferdam spaces, 6", 5", 3" and 2 1/2" dia., openings 36", fore peak, and 18" elsewhere above deck.
On Poop deck to S.F. Cross Bunker, 4" dia., 6'-0" above deck, efficiently stayed.
On Harbour deck to No 1 & 4 Wing Cargo tanks, 6" dia., 6'-0" above deck efficiently stayed, and 2" dia., on tops of circular access hatches to these wing tanks, openings 24" above covers.

All airpipes fitted with wood plugs or gauge, and canvas covers.

Particulars of Gangway Cargo and Coaling Ports:—

None

Particulars of Scuppers and Sanitary Discharge Pipes:—

Scuppers and sanitary discharges from spaces above the freeboard deck fitted with brass automatic non-return storm valves at ship's sides.

6 off 4"x2" slots cut in stringer angle each side to drain freeboard deck.
Scuppers from poop led to bilges.

Particulars of Side Scuttles:—

To steering gear and cross alleyway spaces in Poop Tween deck space aft, 10" dia., strongly constructed with brass frames, and hinged steel deadlights.

To accommodation and store spaces above poop deck level 10", 12", 14" & 16" dia., strongly constructed with brass frames, and hinged steel deadlights fitted to sidelights in Poop & Bridge deck accommodation and store spaces.

Vertical distance of Sill of lowest Side Scuttle above top of keel No side scuttles fitted below freeboard deck.
Vertical distance of sill of lowest side scuttle, 20'-1 1/2" forward of A.P., 25'-9" above top of keel.

Particulars of Guard Rails:—

Strongly constructed steel bulwarks, efficiently stayed, fitted on freeboard deck for about 16'-0" abaft Forecastle Bulkhead. Elsewhere on freeboard deck, forecastle and poop decks and trunk top strong steel stanchions, 3'-6" height, spaced about 5'-0" apart with 3 rails, and efficiently stayed to deck.

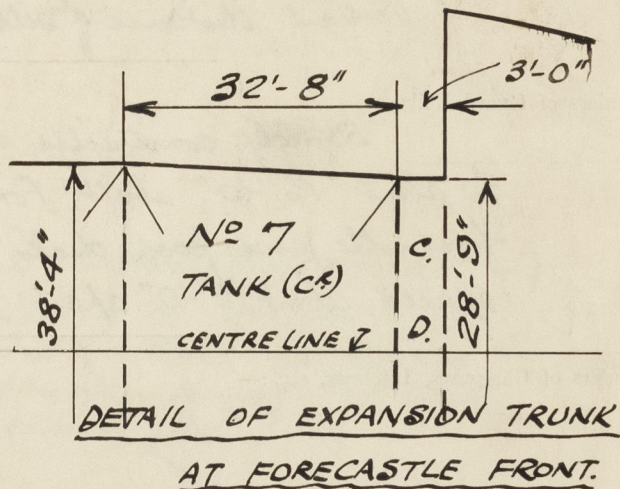
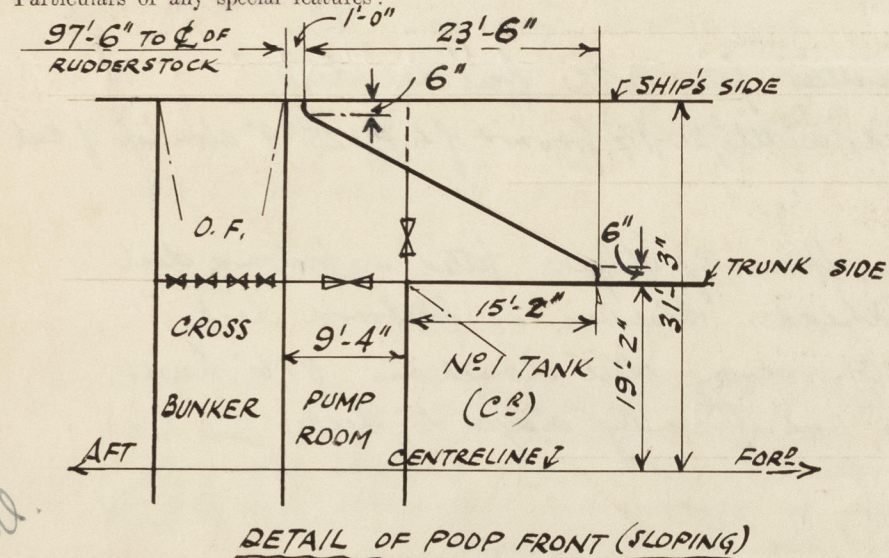
Particulars of Gangways, Lifelines, etc.:—

Particulars of Freeing Arrangements.						
	Length of Bulwark	Height of Bulwark	Size of Freeing Ports	Number each side	Area each side	Rule area each side
After Well	✓					
Forward Well	✓					
State position of each freeing port (After Well:— ✓ (F. and A. position and height above deck edge) Forward Well:— ✓						
State whether the freeing ports are fitted with shutters, bars, or rails, and give particulars of such:— ✓						
Additional area where sheer is less than standard. ✓						

PARTICULARS OF PROTECTION TO OPENINGS, ETC.

HATCHWAYS ON FREEBOARD AND SUPERSTRUCTURE DECKS.												POOP		
FREEBOARD DECK												FORECASTLE DK.	TRUNK TOP	POOP DECK.
Description of Hatchway	4 OFF O.T. HATCHES "A" TO WING TANKS	4 OFF O.T. HATCHES "B" TO WING TANKS	To F.P. STORE	To CARGO HOLD	To F.P. STORE	To CARGO HOLD	7 OFF O.T. HATCHES TO C ⁶ TANKS	To FOR ² COFFERDAM (P. & S.)	To O.F. CROSS BUNKER (P. & S.)	To TWEEN DK. SPACE. AFT.		
Dimensions of Hatchway	4'-0" DIA.	4'-0" DIA.	2'-0" x 2'-0"	6'-9" x 6'-9"	1'-7" x 1'-3"	8'-0" x 8'-0"	4'-0" DIA.	1'-7" x 2'-0"	2'-0" x 1'-7"	2'-3" x 2'-3"		
COAMINGS	{	Height above Deck	4'-0"	4'-0"	6"	9"	6"	2'-6"	10"	6"	6"	6"		
		Thicknes { Sides	.40"	.40"	{ 6" x 3" x 38" OA.	.36"	{ 6" x 3" x 38" OA.	.44"	{ .75"	{ 6" x 3" x 38" OA.	{ 6" x 3 1/2" x 38" OA.	{ 6" x 3" x 38"		
		Ends												
		Stiffeners	-	-	-	-	-	-	-	-	-	-	-	
		Brackets, Stays	4 OFF	4 OFF	-	-	-	-	1 EA. SIDE	-	-	-	-	
HATCH BEAMS	{	Number	✓	✓	✓	✓	✓	✓	✓	✓	✓	✓		
		Spacing	✓	✓	✓	✓	✓	✓	✓	✓	✓	✓		
		Scantling and Sketch												
		Bearing Surface												
FORE AND AFTERS	{	Number												
		Spacing												
		Unsupported Lengths												
		Scantling* and Sketch												
HATCH COVERS	{	Material	STEEL	STEEL	STEEL	STEEL	STEEL	STEEL	STEEL	STEEL	STEEL	STEEL		
		Thickness	.40"	.40"	.30"	.36" AND 2 STIFFS	.40"	.44" AND 2 STIFFS	.40"	.40"	.40"	.40"		
		How fitted	RIVETTED TOP WITH 18" x 14" MANHOLE.	HINGING	HINGING	6" x 3" x 28" BA. HINGING	HINGING	7" x 3" x 33" BA. HINGING	HINGING	PORTABLE	PORTABLE	HINGING		
		Bearing Surface	COVER SECURED BY 7/8" BOLTS - 4 3/8" APART	-	-	-	-	-	-	-	-	-		
Spacing of Cleats	8 TOGGLES	2 TOGGLES EACH SIDE	3 TOGGLES EACH SIDE	1 TOGGLE EA. 3 SIDES & 2 HINGING BOLTS	3 TOGGLES EACH SIDE	8 TOGGLES	COVER SECURED BY 7/8" BOLTS 4" APART	COVER SECURED BY 7/8" BOLTS 4" APART	2 TOGGLES EA. SIDE			
Number of Tarpaulins	-	-	-	-	-	-	-	-	-	-		
*Are wood fore and afters steel shod at all bearing surfaces? ✓														
Are battens and wedges efficient and in good condition? ✓														
Are tarpaulins in good condition and in accordance with rule requirements? ✓														
Are lashings provided in accordance with rule requirements? ✓														

Particulars of any special features:—



Endorsement at first survey and at surveys for renewal of Certificate :—

The fittings and appliances are in accordance with the particulars shown on this form (or as now modified) and are in good condition.