

25 MAR 1952

Index No. 43476
(For London Office only).

Lloyd's Register of Shipping.

SURVEYS FOR FREEBOARD.

(CONDITIONS OF ASSIGNMENT.)

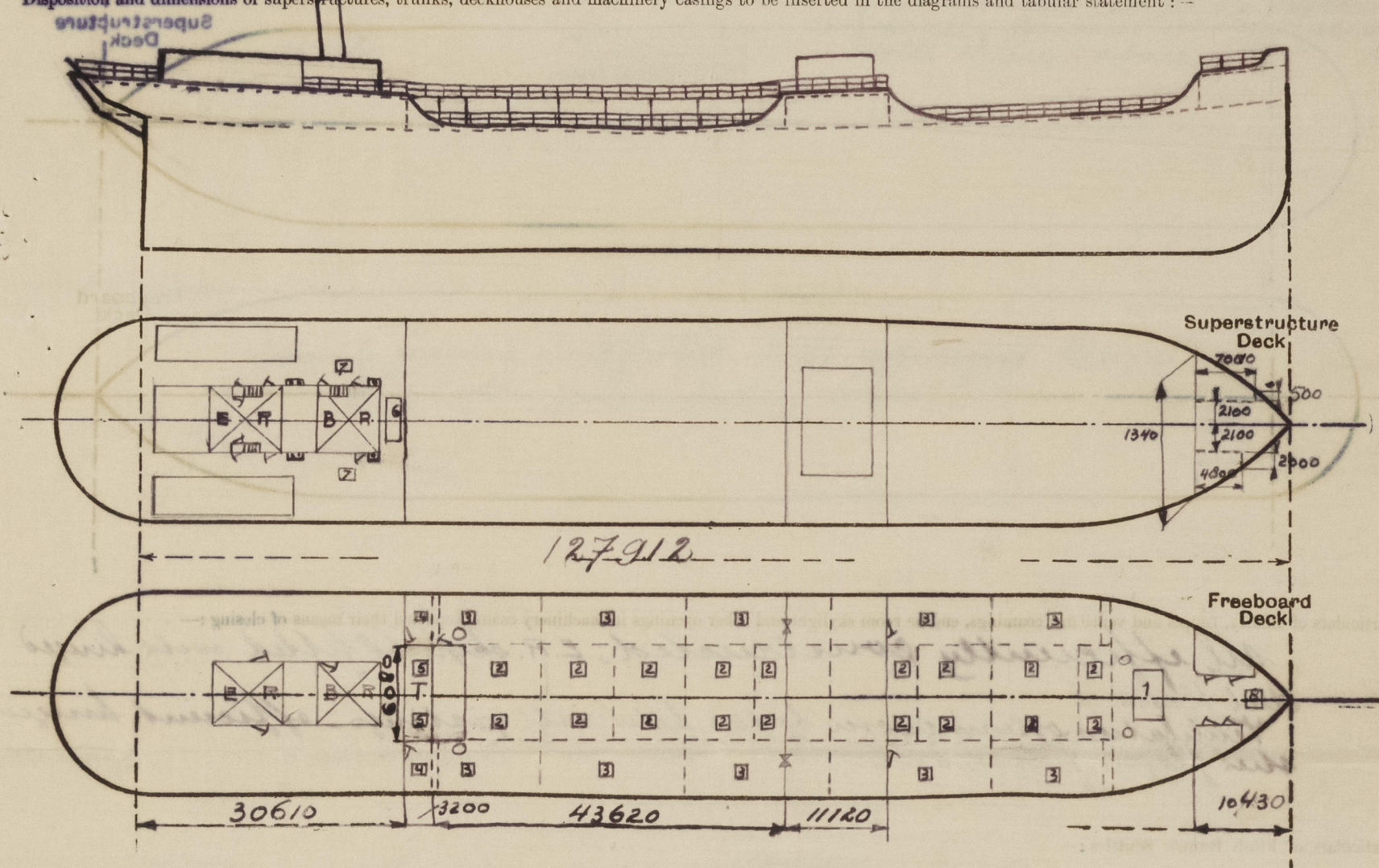
No. 34583

Ship's Name *MARI CHANDRIS*Port of Survey *Rotterdam*

Official Number

Surveyor's Signature *W. Wiskoot*Nationality and Port of Registry *Greek; Piraeus*Date of Survey *March 52.*

Disposition and dimensions of superstructures, trunks, deckhouses and machinery casings to be inserted in the diagrams and tabular statement:—

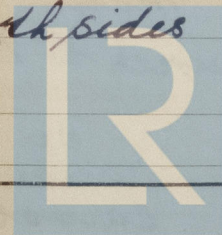


Particulars of Superstructures, Trunks, Casings, Deckhouses.

| | Coaming | Plating | Stiffeners | Spacing | End Attachments of Stiffeners | Size of Openings | Height of Sills | Height of Casings |
|---|---------|---------|--------------------------------------|---------|-------------------------------|------------------|-----------------|-------------------|
| Poop Bulkhead ... | 12 ✓ | 10 ✓ | <i>m m horizontal</i> L 200.90.12 | 800 ✓ | <i>brackets</i> | 1550.620 | 470 ✓ | 2400 |
| Raised Quarter Deck Bulkhead ... | | | | | | | | |
| Bridge, After Bulkhead ... | 9 ✓ | 8 ✓ | L 150 90 11 | 690 ✓ | <i>none</i> | 1000.1700 | 460 ✓ | 2400 |
| Bridge, Forward Bulkhead ... | 12 ✓ | 9 ✓ | L 100.100.10 | 700 ✓ | <i>brackets</i> | 1550.620 | 460 ✓ | 2400 |
| Forecastle Bulkhead ... | ✓ | 8 ✓ | L 130.75.9 | 840 ✓ | | 1600.620 | 350 ✓ | 2400 |
| Trunk, Aft (<i>.T</i>) ... | ✓ | 12 1/2 | <i>none</i> | ✓ | ✓ | <i>none</i> | ✓ | 950 |
| Trunk, Forward ... | | | | | | | | |
| Exposed Machinery Casings on Freeboard or Raised Quarter Decks ... | | | | | | | | |
| Exposed Machinery Casings on Superstructure Decks ... | 12 ✓ | 10 ✓ | L 90.90.12 1/2 | 700 ✓ | <i>lugs</i> | 1680.610 | 300 ✓ | 2400 |
| Machinery Casings within Superstructures not fitted with Class I Closing Appliances ... | | | | | | | | |
| Deckhouses on Flush Deck Ships ... | | | | | | | | |

Particulars of Closing Appliances (state if capable of being manipulated from both sides).

| | |
|---|--|
| Poop Bulkhead ... | <i>Steel hinged w. s. doors, operable both sides. ✓</i> |
| Raised Quarter Deck Bulkhead ... | |
| Bridge, After Bulkhead ... | <i>efficient wood shifting board in steel channels riveted to bulkhead ✓</i> |
| Bridge, Forward Bulkhead ... | <i>Steel hinged w. s. doors, operable both sides ✓</i> |
| Forecastle Bulkhead ... | <i>Steel hinged doors operable both sides. open ✓</i> |
| Exposed Machinery Casings on Freeboard or Raised Quarter Decks ... | |
| Exposed Machinery Casings on Superstructure Decks ... | <i>Steel hinged doors operable both sides ✓</i> |
| Machinery Casings within Superstructures not fitted with Class I Closing Appliances ... | ✓ |
| Deckhouses on Flush Deck Ships ... | |

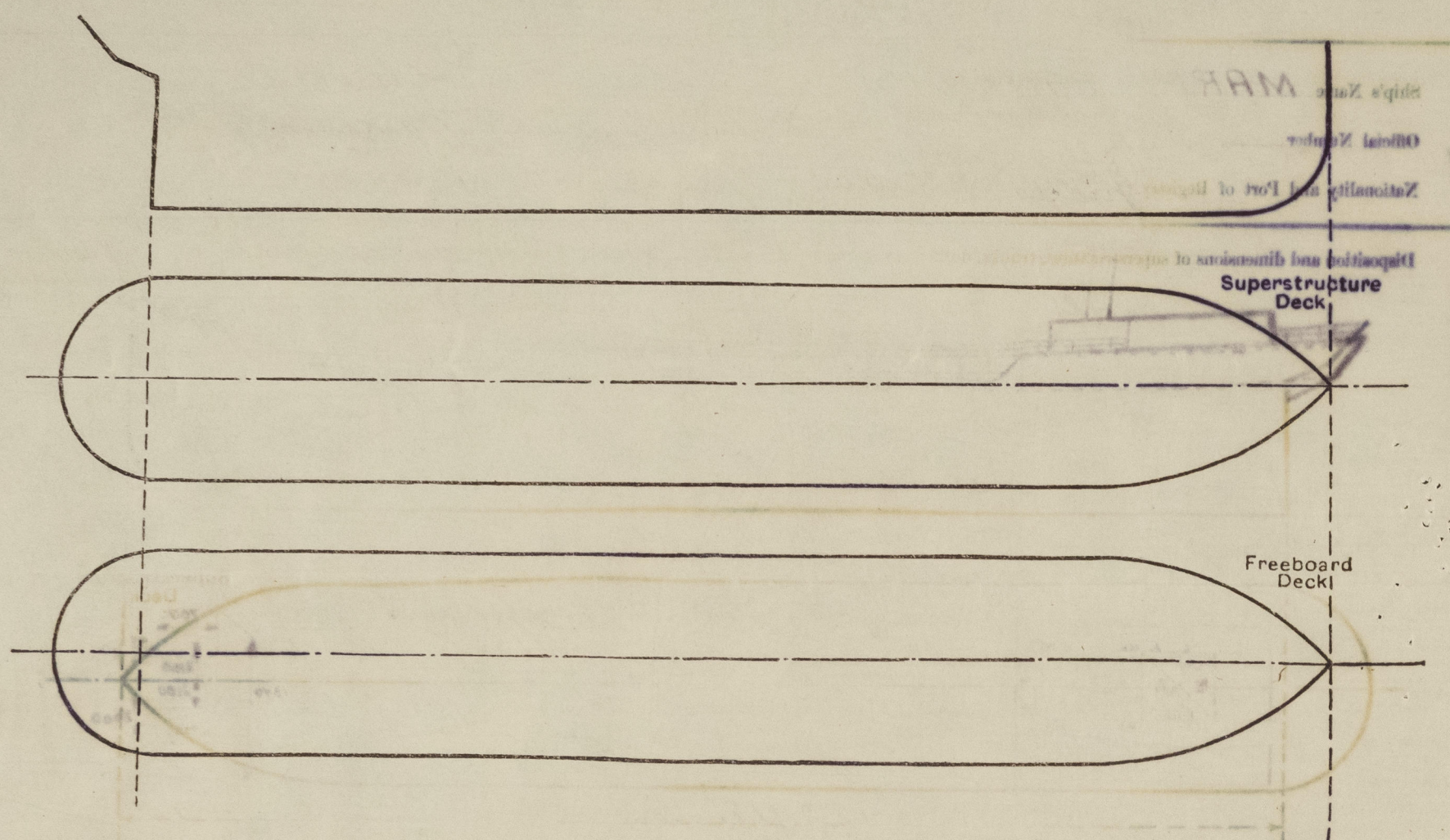


© 2021

Lloyd's Register
Foundation

PARTICULARS OF PROTECTION TO OPENINGS, ETC.

The following diagrams should be used to indicate the positions of cargo and coaling hatchways, gangway, cargo and coaling ports, ventilators, companionways, etc., which would affect the seaworthiness of the ship:—



Particulars of fiddle, funnel and ventilator coamings, engine room skylight and other openings in machinery casing tops and their means of closing:—

all efficiently constructed; E.F. skylight fitted with hinged steel flaps.
Ventilation openings over boilers fitted with gratings; efficient hinged steel flaps fitted over.

Particulars of Flush Bunker Scuttles:—

none

Particulars of Companionways:—

Situated on fore open sill door open both sides
fide: none
bridge: none
poop: as under Superstr. 60.
maindeck pump room 1500 620 970 steel hinged / yes.

Particulars of Ventilators in exposed positions on freeboard and superstructure decks:—

Coamings:
Situated on fide deck number height ab. deck thickness
fide deck 4 none 760 8
bridge 180 13 760 7 1/2
poop 240 3 760 9
360 3 2400 10
580 1 2400 10
maindeck/exp 620 2 910 10 (pump room)
600 2 910 10 (fore hold)

All vent. coamings fitted with wooden plugs and canvas covers
more than 910 mm in height efficiently stayed or braced
filled with hinged steel w. flaps.

Particulars of Air Pipes in exposed positions on freeboard, raised quarter, or superstructure decks:—

Situated fide deck height
fide deck 460
poop none
bridge none
main 910

Air pipes to tanks intended to carry water fitted with wooden plugs
removable copper mugsquare at mouth and canvas covers.

Particulars of Gangway Cargo and Coaling Ports:—

Mari Chandris.

none

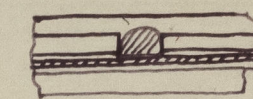
Particulars of Scuppers and Sanitary Discharge Pipes:—

from space fide bridge poop mells

scuppers none
scumplugs in aft block none

Sanitary discharges

none
leading to shell fitted with non-return valves in efficient houses fastened to shell and accs. side sluice valves.



Particulars of Side Scuttles:—

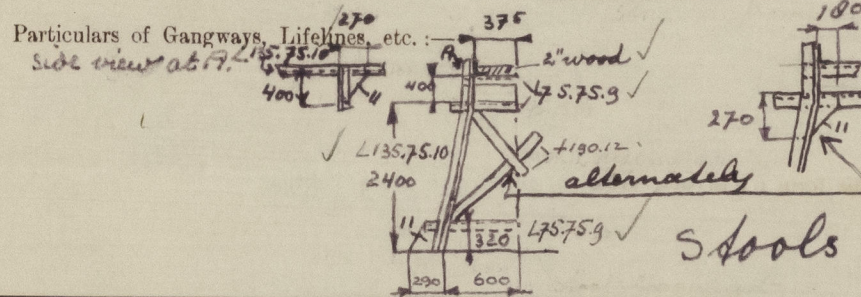
Strongly framed and fitted with efficient hinged dead light; permanently attached.

Vertical distance of Sill of lowest Side Scuttle above top of keel no side scuttles below freeb. deck

Particulars of Guard Rails:—

Situated fide deck main bridge gangway
height 1000 1000 900
standards 1 1/2" 1 1/2" 1 1/2"
apart 1700 1250 1600
rail 2-5/16" stems with stretching screws 2-1" gas pipes as a)

Particulars of Gangways, Lifelines, etc.:



Gangway from poop deck to bridge deck

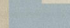
Stools 3600 apart.

Particulars of Freeing Arrangements.

| | Length of Bulwark | Height of Bulwark | Size of Freeing Ports | Number each side | Area each side | Rule area each side |
|------------------|-------------------|-------------------|-----------------------|------------------|----------------|---------------------|
| After Well ... | no bulwark | | | | | |
| Forward Well ... | | | | | | |

State position of each freeing port ... After Well:—
(F. and A. position and height above deck edge) Forward Well:—
State whether the freeing ports are fitted with shutters, bars, or rails, and give particulars of such:—
Additional area where sheer is less than standard.

sheerstrake edge above deck edge 270 mm

 © 2021
Lloyd's Register
Foundation