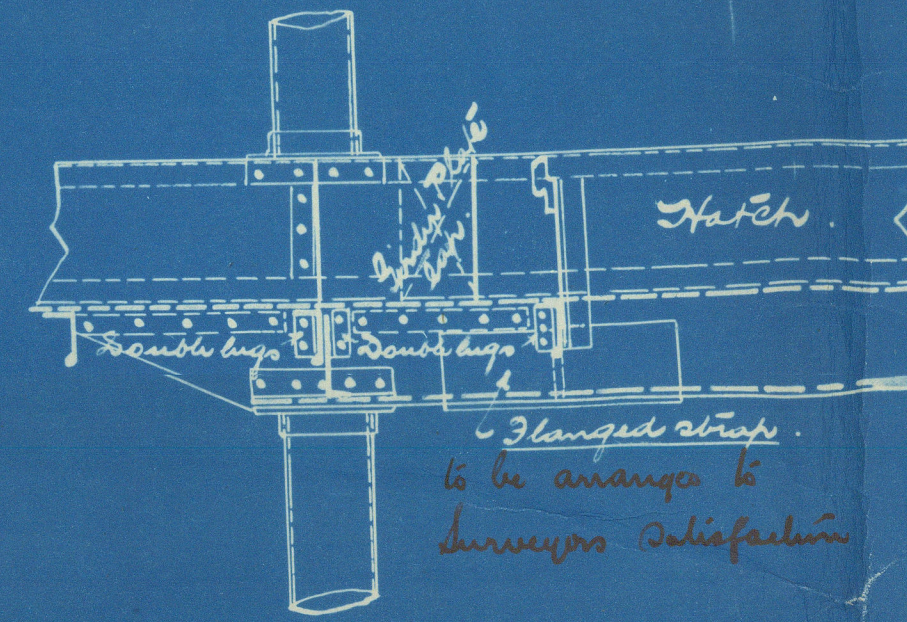


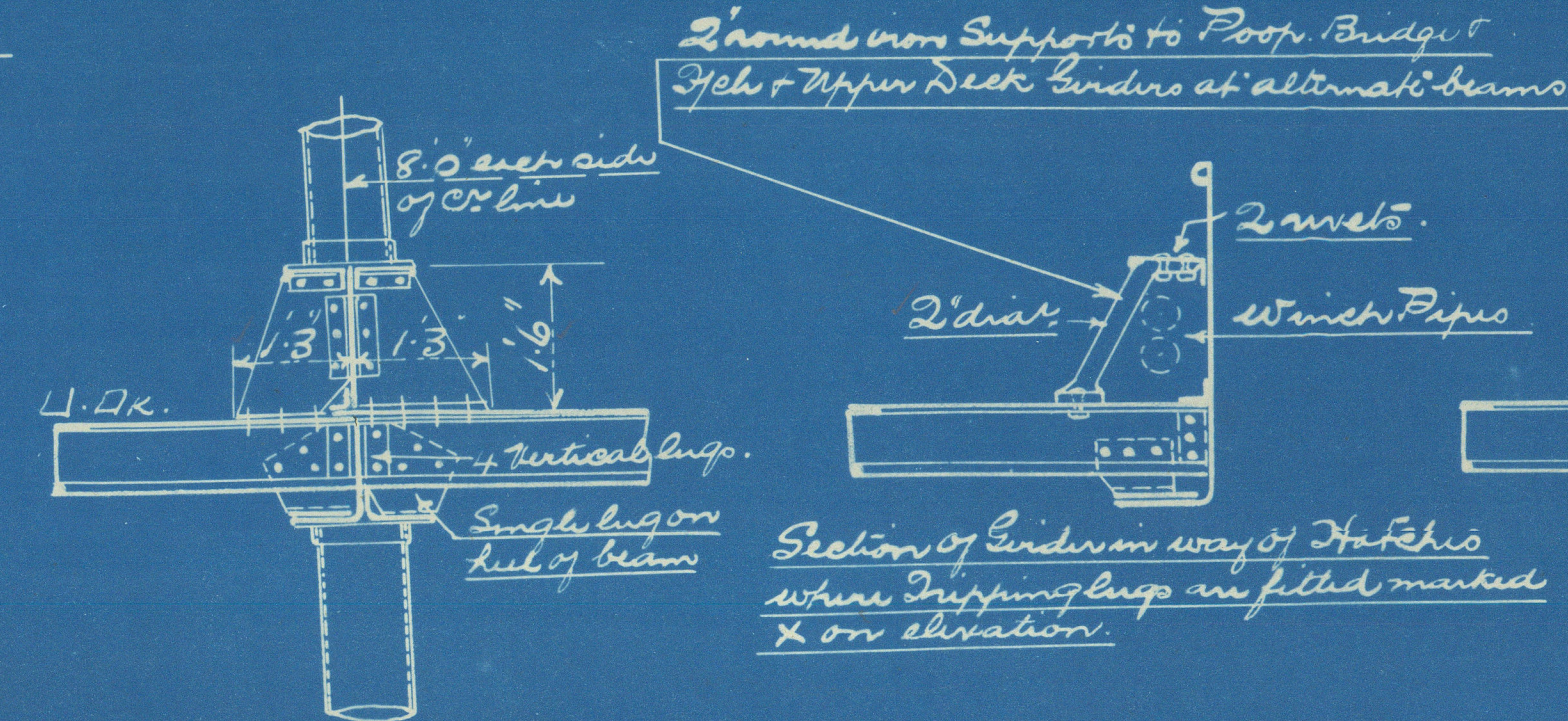
PROFILE SHOWING SCANTLING OF TUBE PILLARS, GIRDERS, ETC.

SCALE 1" = ONE FOOT.

UPPER DECK GIRDER DETAILS
SCALE 1" = ONE FOOT.

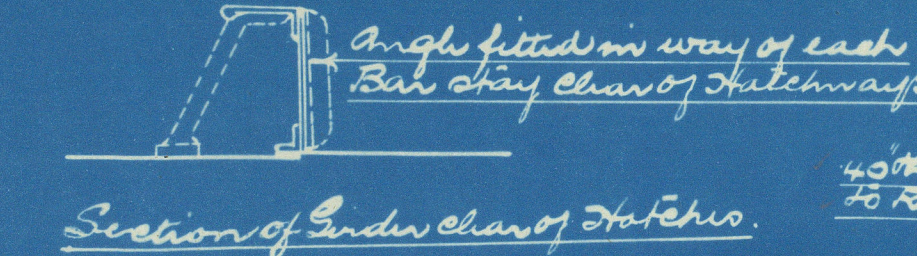


Flanges above to be arranged to suit surveyor's satisfaction.

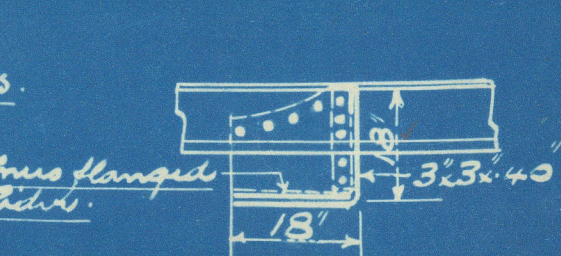


Section of binder in way of Hatch where shipping truss are fitted marked X on elevation.

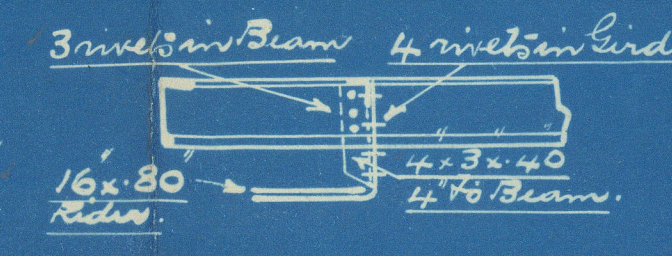
Section of binder in way of Hatch where no shipping truss are fitted.



Section of binder in way of Hatch where no shipping truss are fitted.

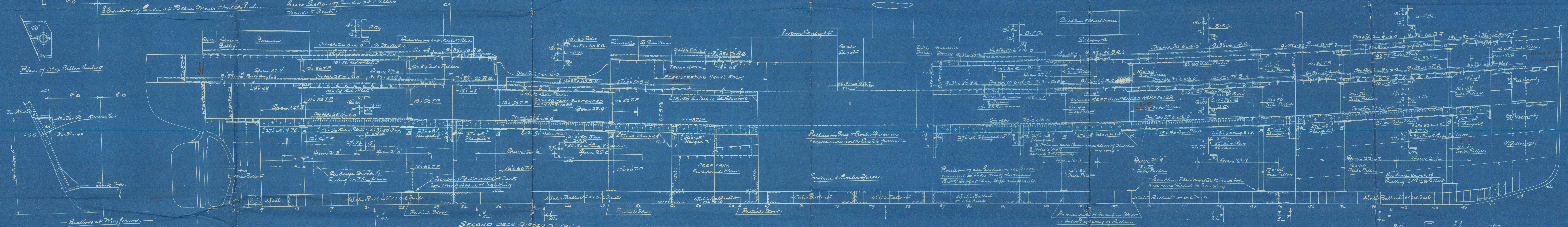


Shipping truss marked K on plan.

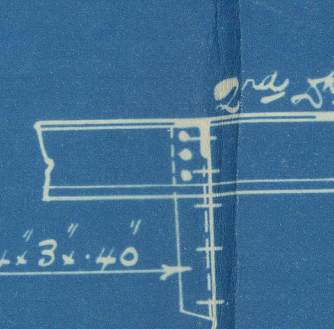


Range to beams where no shipping truss.

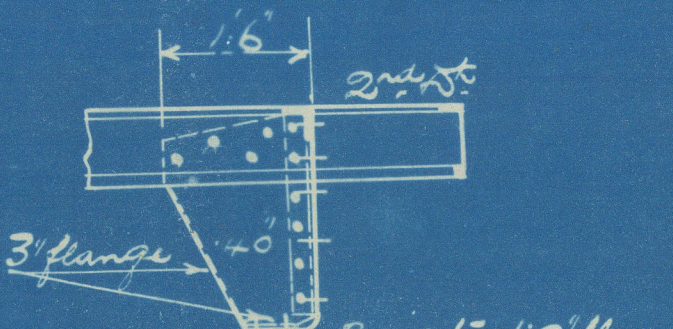
Details of binder fitted below upper deck from No 53 to 66.



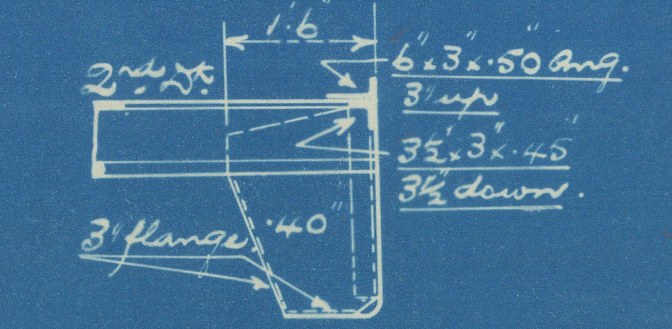
SECOND DECK GIRDER DETAILS
SCALE 1" = ONE FOOT.



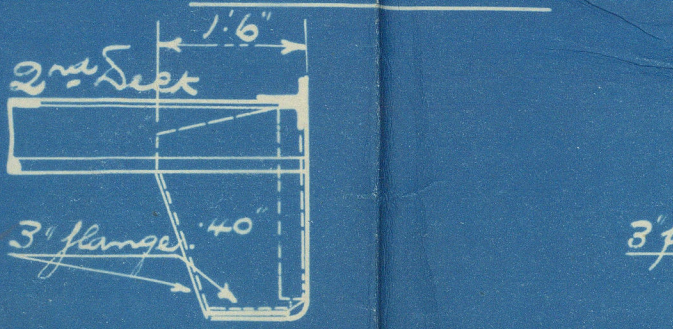
Section of binder in way of Hatch where no shipping truss are fitted.



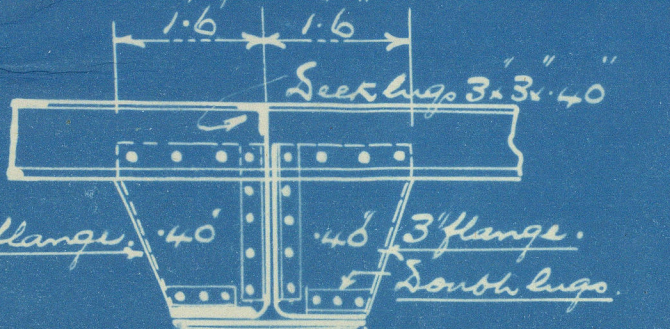
Section of binder in way of Hatch where shipping truss are fitted (No Ruler Plate).



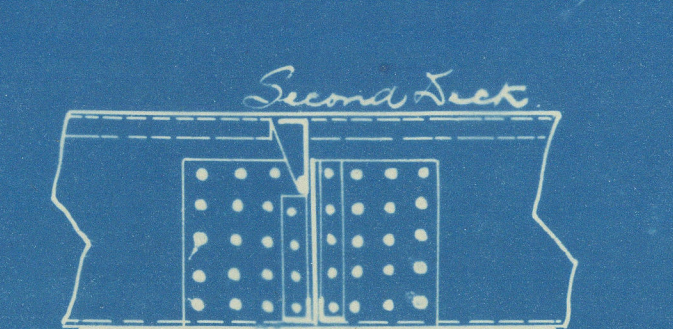
Section of binder in way of Hatch where shipping truss are fitted (No Ruler Plate).



Section of binder in way of Hatch where shipping truss are fitted (No Ruler Plate).



Section of binder in way of Hatch where shipping truss are fitted (No Ruler Plate).



Section of binder in way of Hatch where shipping truss are fitted (No Ruler Plate).

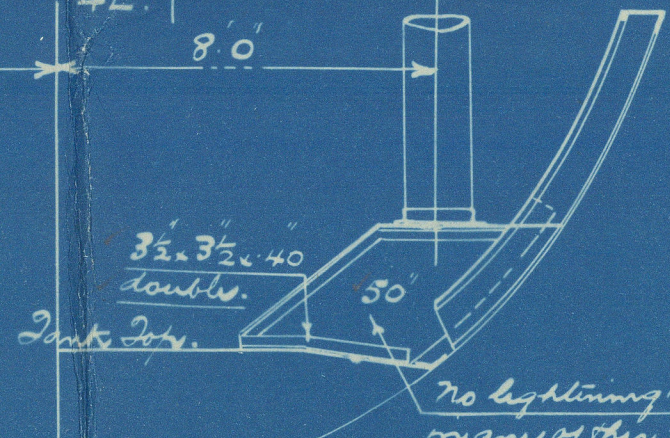
When Ruler plates are fitted they are on all cases to be extended beyond the pillars at the ends of their spans.

897.

Note: Shipping truss fitted to alternate beams clear of Hatch and to every beam in way of Hatch.

Section of binder showing connection (B) at head of tube pillars.

W. GRAY & CO. (1918) LIMITED
IRON & STEEL
SHIP BUILDERS
MARINE ENGINEERS
AND
REPAIRERS
WEST HARTLEPOOL



Section at 19 1/2 frame.

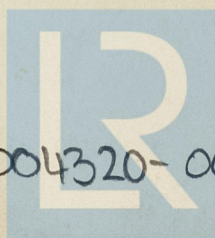
897.

W. Gray 897
Purple showing
Gillies & Jones

S. City of Glasgow

WEST HARTLEPOOL Rpt No 1586,

RETAIN



© 2021

004316-004320-0002 Lloyd's Register
Foundation