

# Lloyd's Register of Shipping.

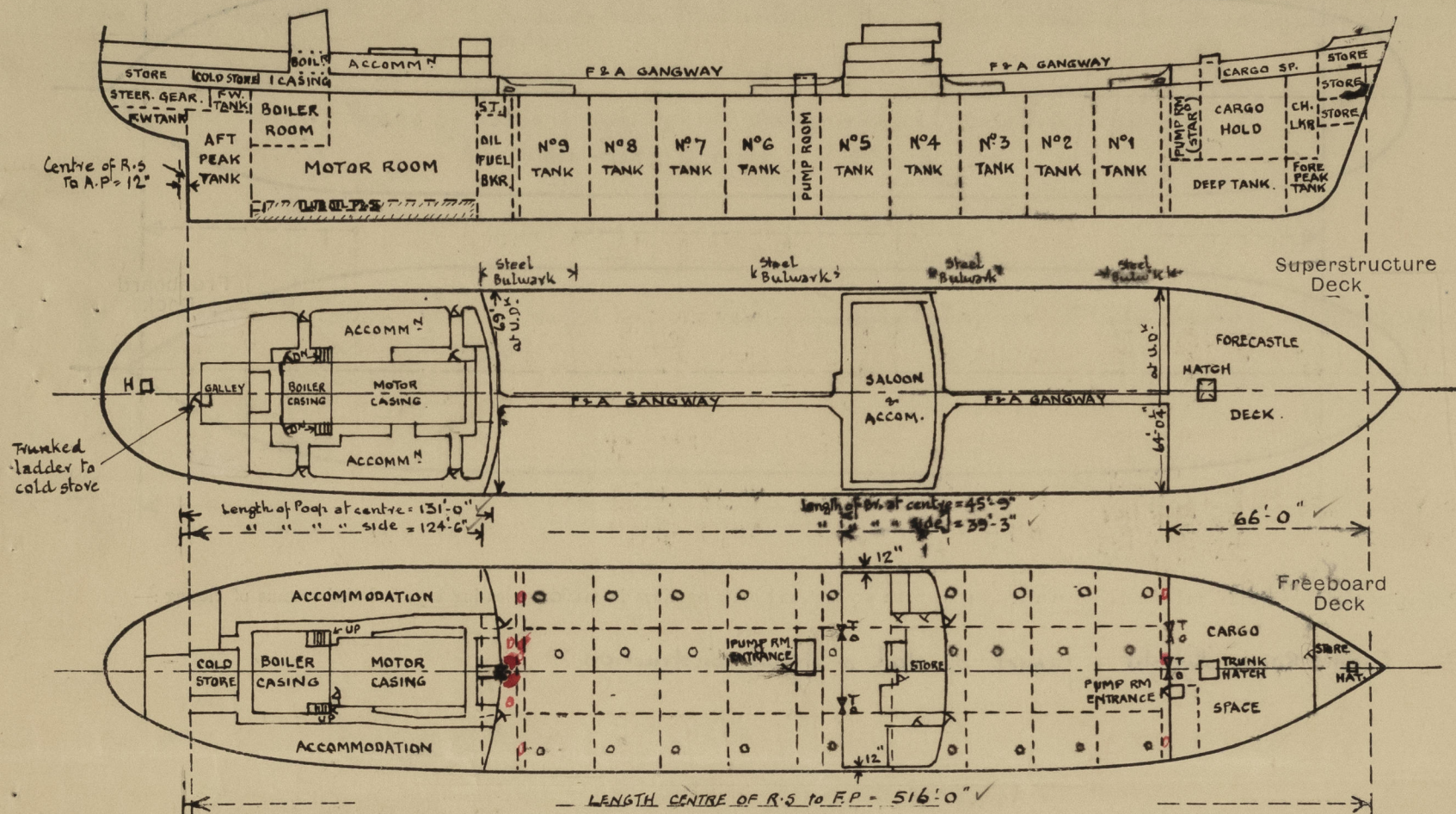
## SURVEYS FOR FREEBOARD.

### (CONDITIONS OF ASSIGNMENT.)

4-0011952

Ship's Name **"CLYDEFIELD"** Port of Survey **Glasgow**  
 Official Number **169242** Surveyor's Signature **D. S. Cook**  
 Nationality and Port of Registry **British Newcastle** Date of Survey **Whilst building**

Disposition and dimensions of superstructures, trunks, deckhouses and machinery casings to be inserted in the diagrams and tabular statement:—



Particulars of Superstructures, Trunks, Casings, Deckhouses.

	Coaming	Plating	Stiffeners	Spacing	End Attachments of Stiffeners	Size of Openings	Height of Sills	Height of Casings
Poop Bulkhead ...	45" Vertical	✓	10" x 4" x 44" 1.A	30" ✓	Welded ✓	2 off 5'-0" x 2'-6" 1 off 4'-0" x 2'-0" at centre to pipe passage	18" ✓	8'-0" ✓
Raised Quarter Deck Bulkhead ...								
Bridge, After Bulkhead ...	30" Vertical	✓	4" x 3" x 40" 1.A	30" ✓	Welded	2 off 5'-3" x 3'-1"	18" ✓	7'-6" ✓
Bridge, Forward Bulkhead ...	44" Vertical	✓	10" x 3 1/2" x 46" 8A	30" ✓	Welded ✓	2 off 5'-0" x 3'-0" 1 off 4'-3" x 2'-0"	18" ✓	7'-6" ✓
Forecastle Bulkhead ...	30" Vertical	✓	3" x 2 1/2" x 25" 1A	30" ✓	Welded	2 off 5'-1" x 3'-1"	18" ✓	7'-6" ✓
Trunk, Aft ...								
Trunk, Forward ...								
Exposed Machinery Casings on Freeboard or Raised Quarter Decks ...								
Exposed Machinery Casings on Superstructure Decks ...								
Machinery Casings within Superstructures not fitted with Class I Closing Appliances ...	30" ✓	26" ✓	3" x 2 1/2" x 31" 0A	30" ✓	Rivelled to beam at top. Carried thro' at bottom.	1 off 5'-5" x 2'-3"	18" ✓	8'-0" ✓
Deckhouses on Flush Deck Ships ...								

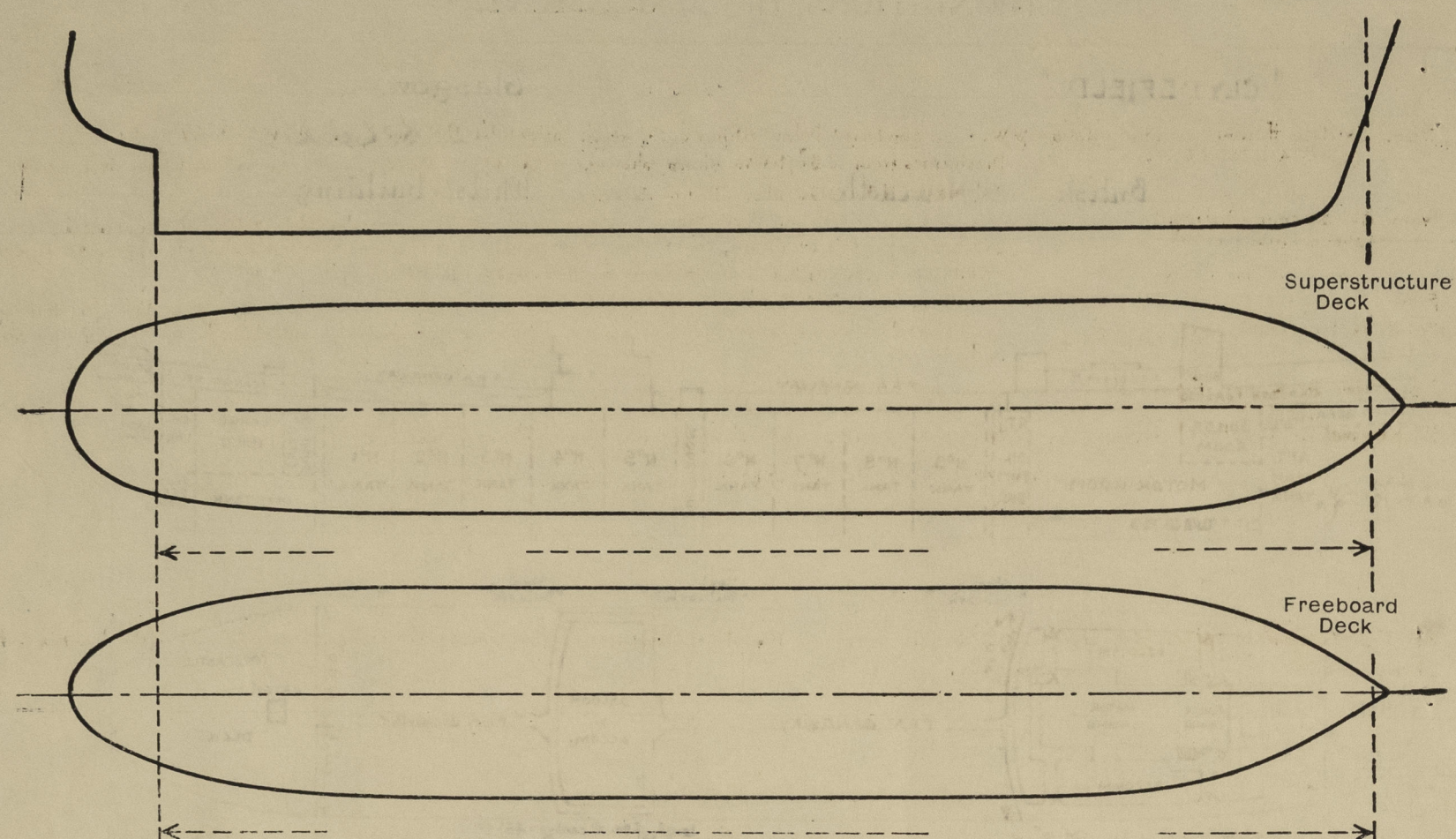
Particulars of Closing Appliances (state if capable of being manipulated from both sides).

Poop Bulkhead ...	Hinged steel W.T. doors operated from both sides and steel plate made W.T. with bolts 7/8" Dia 4" apart.
Raised Quarter Deck Bulkhead ...	
Bridge, After Bulkhead ...	Portable steel plates (30") with hook bolts (12 off sp. 15" apart) ✓
Bridge, Forward Bulkhead ...	Hinged steel W.T. doors operated from both sides. ✓
Forecastle Bulkhead ...	Hinged steel W.T. door operated from both sides and portable steel plates (30") with hook bolts (12 sp.) ✓
Exposed Machinery Casings on Freeboard or Raised Quarter Decks ...	
Exposed Machinery Casings on Superstructure Decks ...	
Machinery Casings within Superstructures not fitted with Class I Closing Appliances ...	Hinged steel doors operated from both sides. ✓
Deckhouses on Flush Deck Ships ...	



## PARTICULARS OF PROTECTION TO OPENINGS, ETC.

The following diagrams should be used to indicate the positions of cargo and coaling hatchways, gangway, cargo and coaling ports, ventilators, companionways, etc. which would affect the seaworthiness of the ship:—



Particulars of fillings, funnel and ventilator coverings, engine room skylight and other openings in machinery casing tops and their means of closing:—

Engine Room skylight + funnel of steel of strong construction. ✓

Particulars of Flush Bunker Scuttles:—

none. ✓

Particulars of Companionways:— Access to aft T.D. accommodation etc., by means of 2 stairways on poop deck inside steel poop house with openings on poop house sides (2 ft. 2 in.) each 6 ft. 7 in. x 2 ft. 6 in. with coaming 18 in. high above wood deck closed by means of strong wood hinged door operated from both sides. ✓  
Access to Refrig. store on Upper deck aft by means of steel trunked vertical ladder with opening on poop house aft bhd. 5 ft. 0 in. x 2 ft. 6 in. with coaming 18 in. above wood deck closed by means of steel hinged W.T. door with 6 toggles operated from both sides. ✓

Particulars of Ventilators in exposed positions on freeboard and superstructure decks:—

**Forecastle D<sup>k</sup>** :- X 2 off 12" dia. C.V. to Hold, coaming 34" x 3'0" high. ✓  
X 1 " 10" " C.V. " for'd pump room, coam. 32" x 3'0" high. ✓  
2 " 10" " C.V. " forecastle T.D. " 32" x 3'0" " ✓  
3 " 8" " " " " 30" x 3'0" " ✓  
**Upper Deck** :- X 2 " 24" " " main Pump Room " 40" x 10'6" " (suitably stayed) ✓  
**Bridge House D<sup>k</sup>** :- 4 " 6" " " stores on U.D.<sup>k</sup> " 30" x 2'6" " ✓  
**Poop Deck** :- 4 " 6" " " " " 30" x 2'6" " ✓  
4 " 8" " " steer gear + rel. mchy sp. coam. 30" x 2'6" high. ✓  
18 " 8" x 4" G.N.V. to T.D. washplaces etc height to openings 2'6" ✓

Ventilators marked thus X provided with screwdown gaslight cover in coaming also canvas covers, remainder of cowl + G.N. vents. provided with wood plugs + canvas covers. ✓

Particulars of Air Pipes in exposed positions on freeboard, raised quarter, or superstructure decks:—

**Forecastle D<sup>k</sup>** :- 1-5 dia. to F.P. Tank height 18" ✓  
4-5 " " Deck " 18" ✓  
**Upper Deck** :- 2-3 1/2 " " for'd C.D. " 7'0" (suitably stayed) ✓  
2-5 " " aft " 7'6" ( " ) ✓  
3-6 " " O.F. Bkys. " 7'6" ( " ) ✓  
3-5 " " Settling Tanks " 7'6" ( " ) ✓  
**Poop D<sup>k</sup>** :- 3-3 dia. to T.D. oil service tanks, height 18" ✓  
2-4 " " D.B. diesel oil " 18" ✓  
2-3 " " " " " 18" ✓  
2-4 " " " Lub. " " carried up inside of funnel to 1/2 ht. ✓  
2-3 " " F.W. Tanks height 18" ✓  
2-4 " " A.P. Tank " 18" ✓  
1-4 " " Rudder Trunk " 18" ✓  
1-3 " " Transome space " 18" ✓  
4-2 1/2 " " T.O. F.W. Tank aft " 18" ✓  
2-3 " " D.B. C.D. in E.R. " 18" ✓

all air pipes to O.F. tanks fitted with portable gauges + canvas covers, remainder fitted with wood plugs + canvas covers. ✓

Particulars of Gangway Cargo and Coaling Ports:—

None. ✓

Particulars of Scuppers and Sanitary Discharge Pipes:—

From Bridge House accommodation:— W.C. led overboard below Upper deck with automatic N.R. valve just above Upper deck ✓  
(above freeboard deck) Discharges from W.B. Baths, sinks, showers + scuppers all led overboard below upper deck with automatic N.R. valve above Upper deck. ✓  
From Aft accommodation:— W.C. led overboard between main + upper deck with automatic N.R. Valve at ship's side ✓  
(above fbd. deck) Discharges from W.B. Baths, sinks, showers + scuppers all led overboard between upper deck and main deck and fitted with automatic N.R. valve at ship's side. ✓  
From Boiler flat:— Scuppers led to E.R. bilges and fitted with weighted lever cock in an accessible position. ✓  
From Refrig. Chambers:— Scuppers (sealed) led overboard between Upper + main Decks fitted with storm valve at ship's side. ✓  
From Main Deck store rooms aft:— Scuppers led to E.R. bilges. ✓  
Upper deck (weather) drained by means of openings in stringer bar and sheerstrake plates. ✓  
All valves made of brass. ✓

Particulars of Side Scuttles:—

Aft T.D. Accommodation } 10" x 12" hinged brass to M.O.T. requirements for 1<sup>st</sup> tier of superstructure all fitted with C.B. ✓  
Bridge House } deadlights. ✓

Vertical distance of Sill of lowest Side Scuttle above top of keel 42'6" ✓

Particulars of Guard Rails:—

On Forecastle, Upper and Poop Decks, open rails and stanchions; 2 1/2" dia rods with 1 1/2" dia. tube top rail; ✓  
stanchions 2 1/2" x 1" flat bar type, galvanised spaced approx. 5'0" apart - height 3'6" ✓

Particulars of Gangways, Lifelines, etc.:—

For particulars of Fore and Aft gangways see overleaf. ✓

### Particulars of Freeing Arrangements.

	Length of Bulwark	Height of Bulwark	Size of Freeing Ports	Number each side	Area each side	Rule area each side
After Well ...	33'0" to 40'0"	3'6"	3'6" x 1'3"	1	3.75 sq' + Open rails	
Forward Well ...	22'0" to 24'0"	3'6"	3'6" x 1'3"	1	3.75 sq' + Open rails	
State position of each freeing port ... { After Well:— 1'0" from Poop front. (F. and A. position and height above deck edge) { Forward Well:— 1'0" " Fiddle "						
State whether the freeing ports are fitted with shutters, bars, or rails, and give particulars of such:— 3 vertical 7/8" dia rods each F.P. ✓						
Additional area where sheer is less than standard. Height above deck edge = 1'4" ✓						



PARTICULARS OF PROTECTION TO OPENINGS, ETC.

HATCHWAYS ON FREEBOARD AND SUPERSTRUCTURE DECKS.									
UPPER DECK.									
Description of Hatchway	...	...	...	...	...	...	...	...	...
Dimensions of Hatchway	...	...	...	...	...	...	...	...	...
COAMINGS	Height above Deck	...	...	...	...	...	...	...	...
	Thickness	...	...	...	...	...	...	...	...
	Stiffeners	...	...	...	...	...	...	...	...
	Brackets, Stays	...	...	...	...	...	...	...	...
	Bearing Surface	...	...	...	...	...	...	...	...
HATCH BEAMS	Number	...	...	...	...	...	...	...	...
	Spacing	...	...	...	...	...	...	...	...
	Scantling and Sketch	...	...	...	...	...	...	...	...
	Bearing Surface	...	...	...	...	...	...	...	...
	...	...	...	...	...	...	...	...	...
FORE AND AFTERS	Number	...	...	...	...	...	...	...	...
	Spacing	...	...	...	...	...	...	...	...
	Unsupported Lengths	...	...	...	...	...	...	...	...
	Scantling and Sketch	...	...	...	...	...	...	...	...
	Bearing Surface	...	...	...	...	...	...	...	...
HATCH COVERS	Material	...	...	...	...	...	...	...	...
	Thickness	...	...	...	...	...	...	...	...
	How fitted	...	...	...	...	...	...	...	...
	Bearing Surface	...	...	...	...	...	...	...	...
	...	...	...	...	...	...	...	...	...
Spacing of Cleats	...	...	...	...	...	...	...	...	...
Number of Tarpaulins	...	...	...	...	...	...	...	...	...
*Are wood fore and afters steel shod at all bearing surfaces? Are battens and wedges efficient and in good condition? Are tarpaulins in good condition and in accordance with rule requirements? Are lashings provided in accordance with rule requirements?									

Particulars of any special features:—

