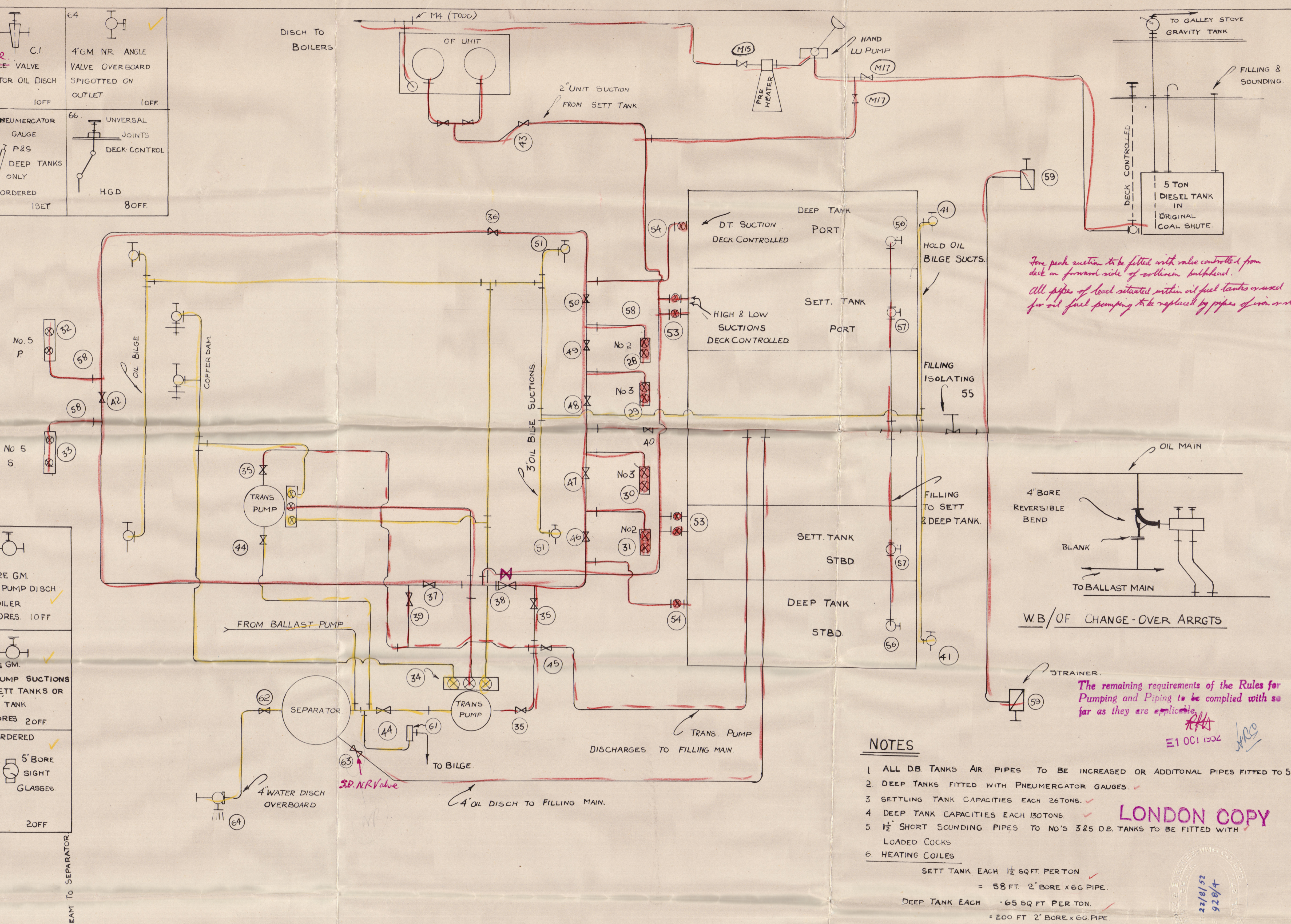
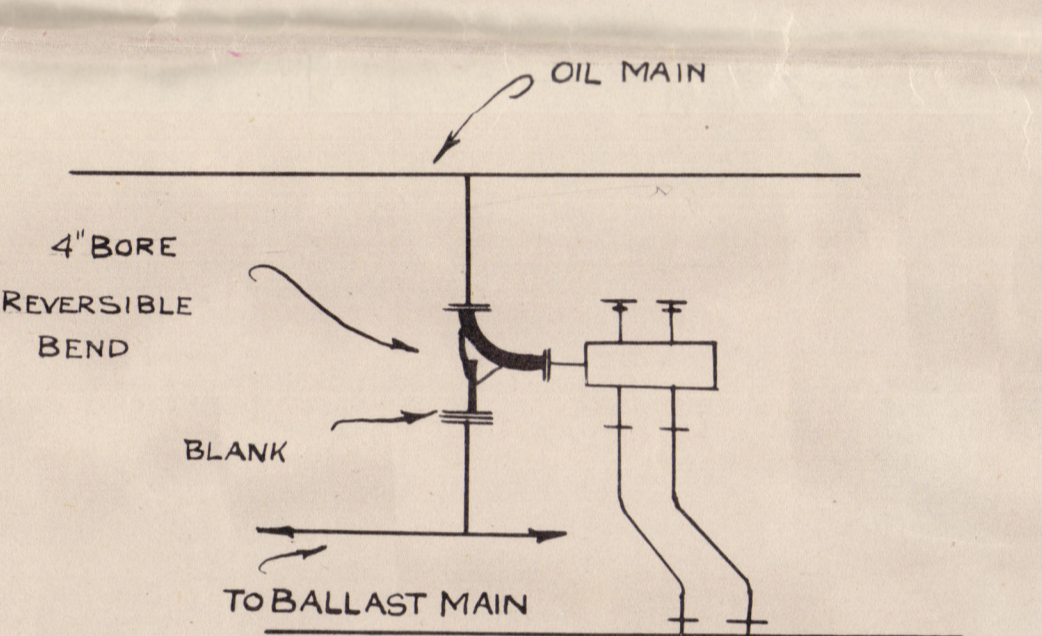


1. UNIT STEAM 1" BORE GM. 200 WP IOFF.	2. TRANS. PUMP STEAM 1" BORE SUPPLIED WITH PUMPS 2OFF.	3. 1 1/2" GM. REDUCING VALVE 200-100LBS IOFF.	4. 1 1/2" GM. HEATING STEAM MASTER STOP 200 WP IOFF.	5. 2 1/2" GM. DK STEAM TO INSTALLATION 200 WP IOFF.	6. 2" C.I. DK STEAM SMOTHERING 200 WP IOFF.	63. 4" SLUICE VALVE SEPARATOR OIL DISCH IOFF.	64. 4" GM NR ANGLE VALVE OVERBOARD SPIGOTTED ON OUTLET IOFF.
7. 1 1/2" MAIN 1" BRANCHES STEAM HEATING MANIFOLD HGD IOFF.	8. 1 1/2" MAIN 1" BRANCHES STEAM HEATING MANIFOLD HGD IOFF.	9. 1 1/2" MAIN 1" BRANCHES EXHAUST STEAM MANIFOLD HGD IOFF.	10. 1 1/2" MAIN 1" BRANCHES EXHAUST STEAM MANIFOLD HGD IOFF.	11. SWITCH COCK O.B.S. TANK DRAIN 1 1/2" GM. F.S. STORES IOFF.	12. STEAM TRAP 1 1/2" BORE C.I. ORDERED IOFF.	65. PNEUMATORIC GAUGE P2S DEEP TANKS ONLY ORDERED IOFF.	66. UNIVERSAL JOINTS DECK CONTROL HGD 8OFF.
13. 1" GM. STEAM & EXHAUST HEATING 200 WP 24 OFF.	14. UNIT EXHAUST STEAM 3/4" BORE GM. IOFF.	15. TRANS. PUMP EXHAUST STEAM 1 1/2" BORE SUPPLIED WITH PUMPS 2OFF.	16. 1" GM. STEAMING OUT 200 WP 6OFF.	17. 1" BORE BRONZE ARMoured FLEXIBLE STEAM HOSE LENGTH 50 FT (5-10 FT LENGTHS) HGD IOFF.	18. STEAMING OUT COUNT WELDED INTO TANK TOP HGD IOFF.		
19. SPECTACLE PLATE FOR D.T. & SETT. TK STEAMING OUT 4OFF.	20. SETT. TANK DRAIN VALVE ORDERED 2OFF.	21. HOSE SPRAYERS HOSES 30 FT LENGTH 3OFF.	22. 2 GALL. FIRE EXTINGUISHERS ORDERED 6OFF.	23. DRIP TRAYS HGD 8OFF.	24. 10 GALL. FIRE EXTINGUISHERS & 30 FT HOSE IOFF.		
25. SAND BOX 10 CUBIC FEET IOFF.	26. SCREWED COVER & SCREWED FEMALE 2 1/2" GM. HOSE VALVES 3OFF.	27. FIRE PUMP SEA SUCTION 2 1/2" BORE FLANGED & SPIGOTTED.	28. DB. TANK VALVE CHEST C.I. NO. 2 DB. WING & CENTRE PORT IOFF.	29. DB. TANK VALVE CHEST C.I. NO. 3 DB. WING & CENTRE PORT IOFF.	30. DB. TANK VALVE CHEST C.I. NO. 3 DB. WING CENTRE STBD IOFF.		
31. DB. TANK VALVE CHEST C.I. NO. 2 DB. WING CENTRE STBD IOFF.	32. DB. TANK VALVE CHEST C.I. NO. 5 DB. WING CENTRE PORT IOFF.	33. DB. TANK VALVE CHEST C.I. NO. 3 DB. WING CENTRE STBD IOFF.	34. PUMP FLANGE 4" BORE 9" DIA. HOLES, 1/2" PCD ORDERED	35. 4" SLUICE VALVE TRANS. PUMP DISCH TO OIL MAIN. ORDERED 3OFF.	36. 4" SLUICE VALVE OIL MAIN 47 ISOLATING 48 ORDERED.	50. 1 1/2" BORE GM. HAND PUMP DISCH TO BOILER F.S. STORES IOFF.	
39. 4" SLUICE VALVE TRANS. PUMP DISCH TO OIL MAIN ORDERED IOFF.	40. 4" SLUICE VALVE DOWCOMER ISOLATING ORDERED IOFF.	41. NO. 2A HOLD OIL BILGE SUCTION 2OFF.	43. 2" SLUICE VALVE UNIT SUCTION ISOLATING ORDERED IOFF.	44. 4" SLUICE VALVE TRANS. PUMP DISCH TO SEPARATOR 2OFF.	45. 4" SLUICE VALVE TRANS. PUMP DISCH TO FILLING MAIN. ORDERED IOFF.	M17. 1" BORE GM. HAND PUMP SUCTIONS FROM SETT. TANKS OR DIESEL TANK F.S. STORES 2OFF.	
51. 3" NR. ANGLE. OIL BILGE SUCTION 4 ORDERS 4 OFF.	52. 3" NR. ANGLE C.I. COFFERDAM. SUCTIONS ORDERED 2OFF.	53. 2 1/2" SLUICE VALVE DC. SETT. TKS. HIGH & LOW SUCTIONS 4 OFF.	54. 4" ANGLE VALVE C.I. DEEP TANK SUCTIONS DK. F.S. STORES 2OFF.	55. 6" SLUICE VALVE FILLING ISOLATING F.S. STORES IOFF.	56. 4" SLUICE VALVE DEEP TANK FILLING ORDERED 2OFF.		
57. 4" SLUICE VALVE SETT. TANK FILLING ORDERED IOFF.	58. 4" HGD CHANGE OVER BENDS C.I.	59. STRAINER BOX FABRICATED 6" BORE 2OFF.	60. STEAM EXHAUST BULK FITTINGS 1" BORE (FABRICATED) HGD 26OFF.	61. 2" BORE GM. RELIEF VALVE SET AT 20 LBS ORDERED IOFF.	62. 4" SLUICE VALVE SEPARATOR WATER DISCH ORDERED IOFF.		



Iron pump suction to be fitted with valve controlled from deck on forward side of collision bulkhead.
All pipes of local situated within oil fuel tanks covered for oil fuel pumping to be replaced by pipes of iron covered.



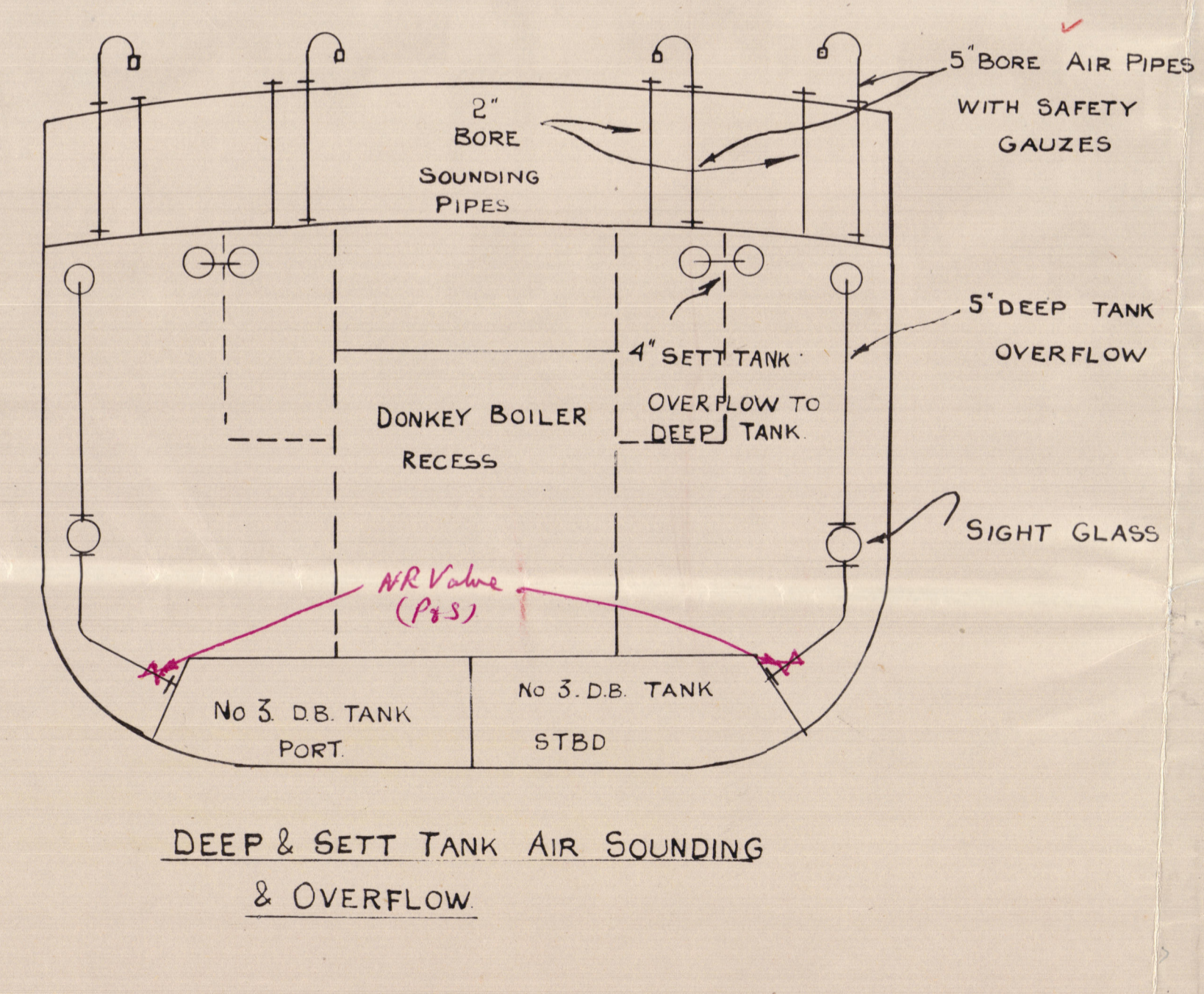
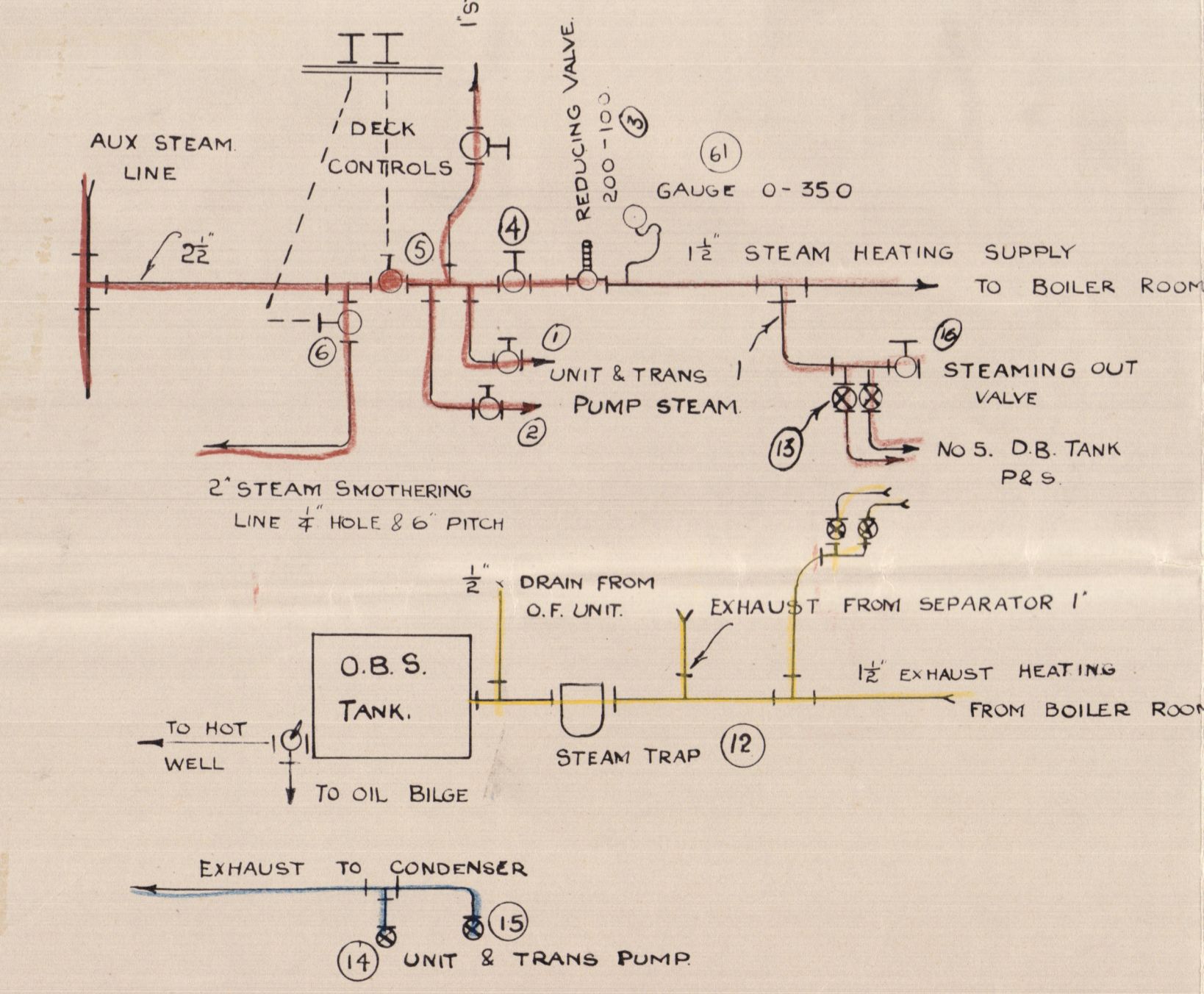
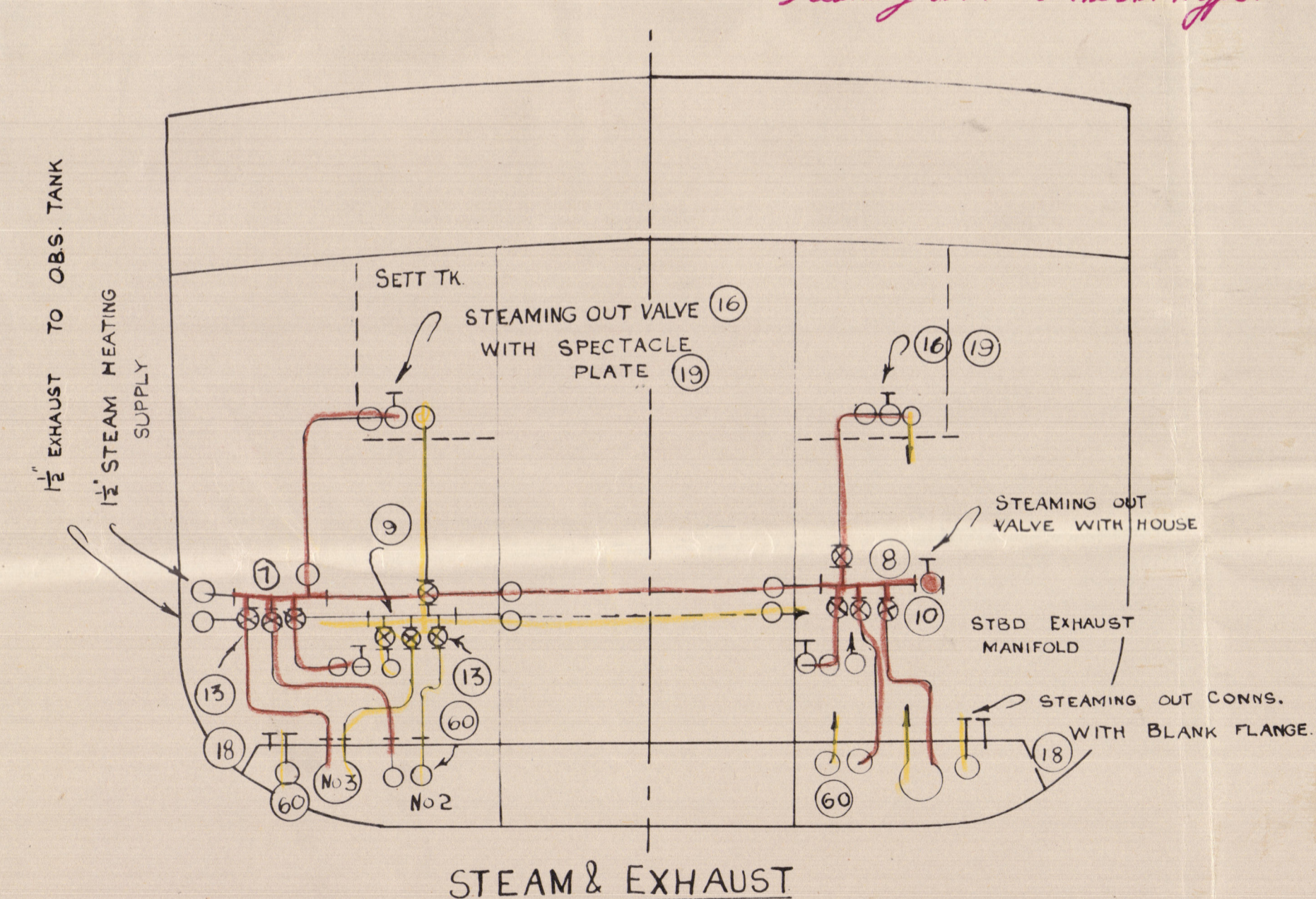
WB/OF CHANGE-OVER ARRGTs

The remaining requirements of the Rules for Pumping and Piping to be complied with so far as they are applicable.
E1 001 1934

- ### NOTES
- ALL DB. TANKS AIR PIPES TO BE INCREASED OR ADDITIONAL PIPES FITTED TO 5" BORE
 - DEEP TANKS FITTED WITH PNEUMATORIC GAUGES.
 - SETTLING TANK CAPACITIES EACH 26 TONS.
 - DEEP TANK CAPACITIES EACH 10 TONS.
 - 1 1/2" SHORT SOUNDING PIPES TO NO. 3 & 5 DB. TANKS TO BE FITTED WITH LOADED COCKS
 - HEATING COILES
- SETT. TANK EACH 1 1/2" SQ. FT. PERTON
= 58 FT. 2" BORE X 66 PIPE.
- DEEP TANK EACH 1 1/2" SQ. FT. PERTON
= 200 FT. 2" BORE X 66 PIPE.
- DB. TANKS 1 1/2" SQ. FT. PERTON
= 2 FT. 2" BORE X 66 PIPE PERTON.
- CENTRE DIVISIONS IN DB. TANKS FOR OIL FUEL ARE WATERTIGHT AS BUILT.
 - BILGE PIPES RUNNING THROUGH DEEP TANKS ARE TO BE FITTED WITH NON-RETURN VALVES IN HOLDS, PIPES IN DEEP TANKS (C.I.) RENEW IN STEEL
 - ALL LEAD PIPES IN ER. 2 BR. TO BE RENEWED IN STEEL
 - BALLAST PUMP SUCTION VALVES FROM FEED TANKS (IF FITTED) TO BE S.D.N.R.
 - G.S. PUMP SUCTION FROM BALLAST LINE TO BLANK-OFF
 - ER. 2 BR. WOOD PLATFORMS TO REPLACE IN STEEL
 - HOLD SIDE OF FORD DEEP TANK BLKD TO BE WOOD SHEATHED
 - TWEEN DECK OVER DEEP & SETT. TANKS TO WOOD SHEATH
 - OIL BILGE SAVE ALLS TO CONSTRUCT AS FOLLOWS
(A) FRD. SIDE OF AFT. ER. BULK'D (B) AFT. SIDE OF AFT. DEEP TANK BULK'D
(C) FRD. SIDE OF FRD. DEEP TANK BULK'D
 - NO. 2 HOLD & ER. BILGE SUCTIONS TO REPOSITION 15 PACE FORD TO CLEAR SAVEALL
 - BOILER ROOM BILGE SUCTIONS TO REPOSITION 15 PACE AFT. TO CLEAR SAVEALL
 - FUNNEL DAMPER TO BE REMOVED
 - SETT. TANKS FITTED WITH SELF CLOSING DRAIN VALVES.

Ref. No. 25173
S.S. MAPLEDORE
CONVERSION TO
OIL FUEL
© 2020
DRAWN DATE DRG. NO.
WW 22-7-52 328/4

Steaming out valves to be S.D.N.R. type.



004300-004307-0109