

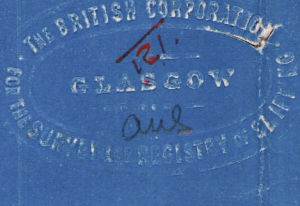
N<sup>o</sup> 43 S.S.

DIMENSIONS 400' 54" x 27' 9" TO UPPER DECK

# MIDSHIP SECTION

SCALE 1/2" = ONE FOOT

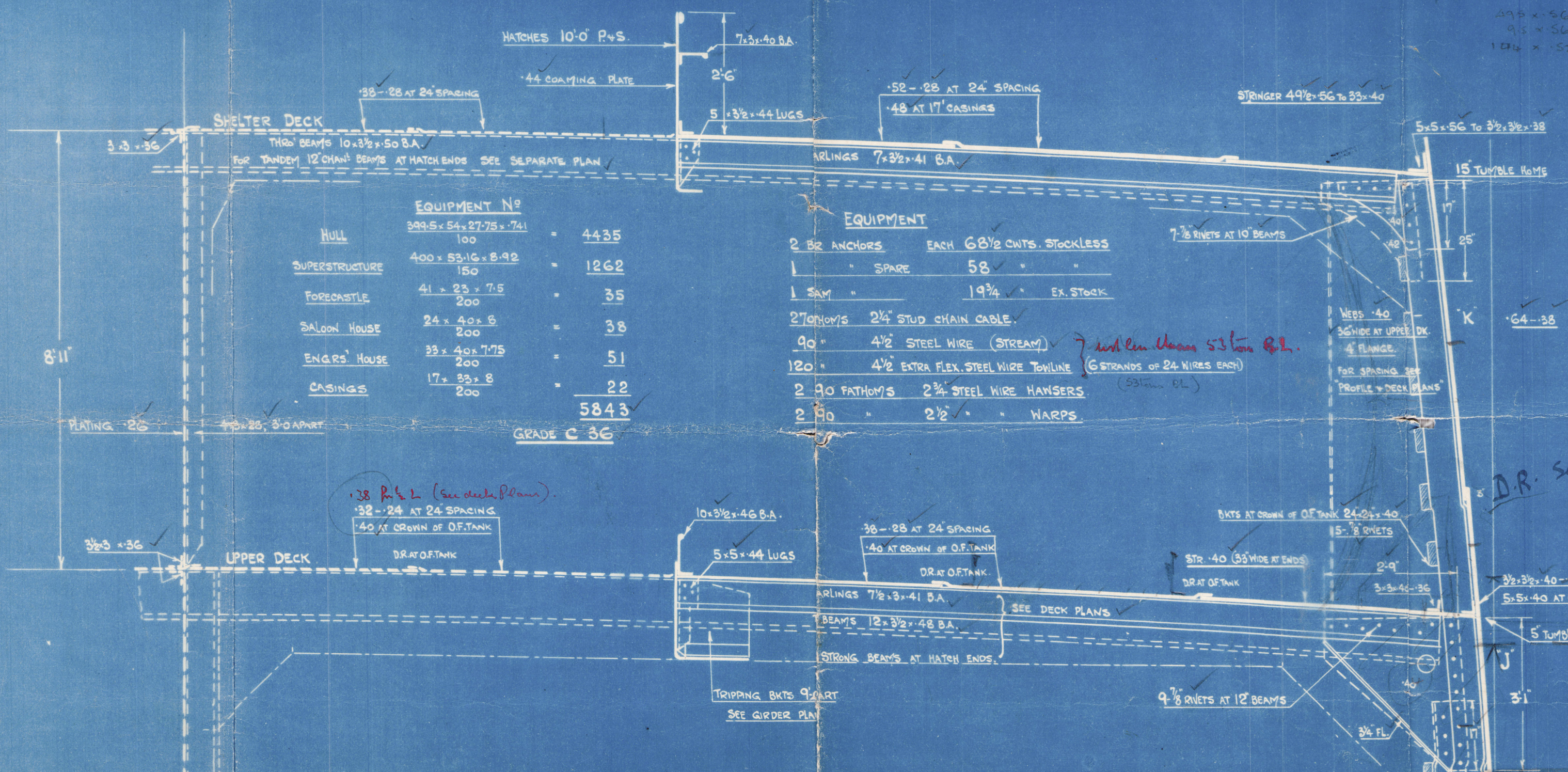
TO CLASS BS \* "WITH FREEBOARD" (DRAFT 24' 4" MLD)



Approved  
7-3-24

FORECASTLE

SIDE PLATING 36  
STRINGER 38 x 36  
PLATING (SHEATHED) 24 BEAMS ON ALT FRAMES  
STRINGER BAR 3/2 x 3/2 x 36



## EQUIPMENT N<sup>o</sup>

NULL	399.5 x 54 x 27.75 x 741	100	4435
SUPERSTRUCTURE	400 x 53.16 x 8.92	150	1262
FORECASTLE	41 x 23 x 7.5	200	35
SALOON HOUSE	24 x 40 x 6	200	38
ENG'RS. HOUSE	33 x 40 x 7.75	200	51
CASINGS	17 x 32 x 8	200	22
			5843

## EQUIPMENT

2 BR ANCHORS	EACH 68 1/2 CWT. STOCKLESS
1 SPARE	58
1 SAW	19 3/4
27 TONNAGE	2 1/4" STUD CHAIN CABLE
90	4 1/2" STEEL WIRE (STREAM)
120	4 1/2" EXTRA FLEX. STEEL WIRE TOWLINE (6 STRANDS OF 24 WIRES EACH)
2 30 FATHOMS	2 3/4" STEEL WIRE HANSERS (53 LBS. E.L.)
2 30	2 1/2" WAPPS

## RIVETING

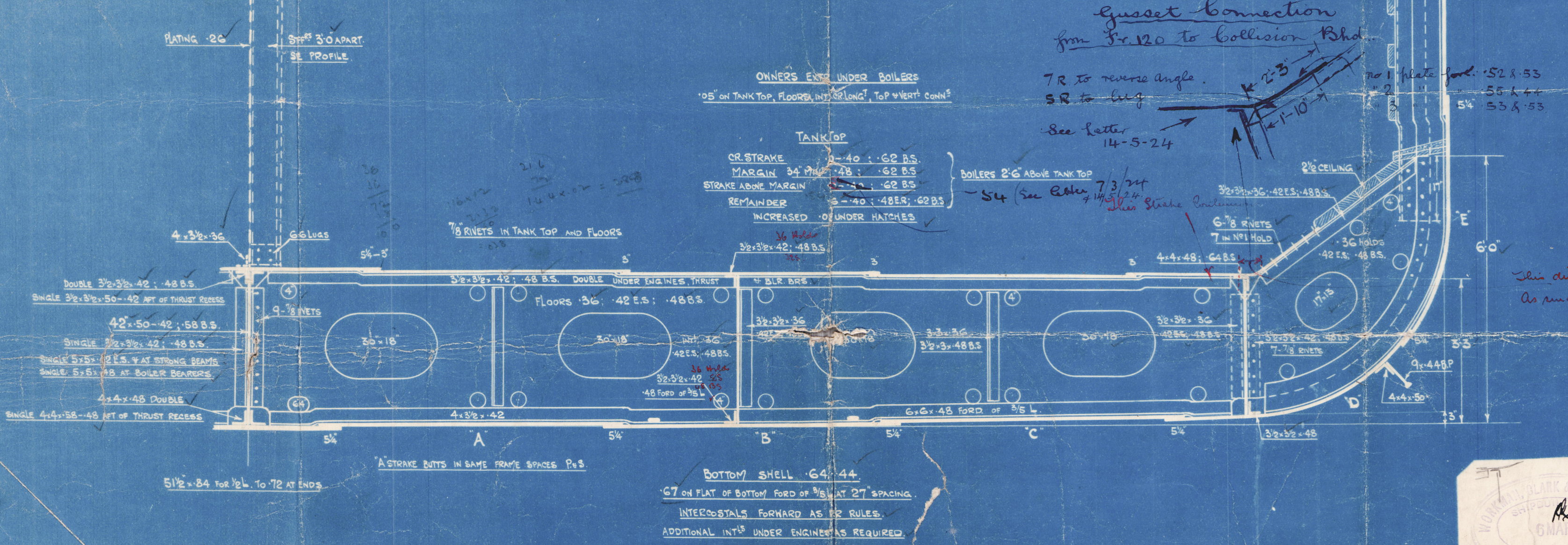
KEEL QUAD RIVETED OVERLAPS TO T.R. AT ENDS (UNDER 80)  
CR GIRDER T.R. LAPS THROUGHOUT  
TANK MARGIN T.R. LAPS FOR 1/2 L TO D.R. AT ENDS  
TANK OR STRAKE T.R. LAPS FOR 1/2 L TO D.R. AT ENDS  
TANK TOP REMAINDER D.R. LAPS THROUGHOUT  
SHELTER DECK STRINGER T.R. LAPS 1/4 L TO D.R. AT ENDS  
" PLATING T.R. LAPS 1/4 L (44" ABOVE) TO S.R. AT ENDS (30" UNDER)  
" BETWEEN HATCHES S.R. LAPS  
UPPER DECK STRINGER D.R. LAPS THROUGHOUT  
" PLATING D.R. LAPS 1/4 L (32" ABOVE) TO S.R. AT ENDS  
" BETWEEN HATCHES S.R. LAPS  
SHELTER DECK SHEERSTAKE QUAD LAPS 1/2 L TO D.R. AT ENDS BEYOND 1/4 L (48" UNDER)  
SHELL REMAINDER T.R. LAPS 3/8 L TO D.R. AT ENDS (48" UNDER)

TANK TOP BEAMS & BUTTS 4 DIA<sup>3</sup> WITH OIL IN D.BTM. NO CEILING.  
FRAMES TO SHELL 5 1/2 DIA<sup>3</sup> IN AFT PEAK, IN DEEP OF TANK, & FROM KEEL TO ABOVE L.W.L. FOR 15' UNDER.  
" ELSEWHERE 6 DIA<sup>3</sup> FOR SPACING OVER 27".  
FRAMES & REVERSES TO FLOORS, & TOGETHER, 7 DIA<sup>3</sup> AT 36" SPACING.

THWARTSHIP PLATE ON TANK TOP UNDER WT. BHD'S (OR STRAKE CONTINUOUS WITH ALONG AMANGIN)  
WITH D.R. LAP TO OTHER STRAKES.

## FRAMING

FRAMES SPACED 36" APART, 27" IN N<sup>o</sup> 1 HOLD, 24" AT ENDS  
INCREASING AS PER RULES SEE PROFILE.  
FRAMES IN AFTER HOLDS AND FORWARD TO 1/2 L  
8 x 4 x 54 REVERSE IN HOLD ONLY  
FRAMES FORWARD OF 1/2 L 8 x 3 1/2 x 46 WITH  
REVERSE 8 x 4 x 60 FORMING 12 1/2" GIRDER  
FRAMES IN BOILER SPACE 8 x 3 1/2 x 56 WITH 8 x 4 x 56 REVERSE  
FRAMES IN PEAKS 6 x 3 1/2 x 34 WITH 3 1/2 x 3 1/2 x 40 REV. 6" GIRDER  
PANTING STRINGERS IN N<sup>o</sup> 1 HOLD SEE PROFILE  
STEM 8 1/8 x 2 5/8  
SEE DETAIL PLAN OF CAST STEEL STERN FRAME.



Transverse Bulkhead  
Tanks Forward  
See Section 2-27

SIDE SHELL 64 x 44

12 x 16 x 21 x 0.125 = 180

Gusset Connection  
from Fr. 120 to Collision Bhd.

TR to reverse angle.  
SR to leg  
See Letter 14-5-24

This distance to be kept  
as small as possible.



1004 307 0087



WORKMAN CLARKS

No. 473.

MIDSHIP SECTION

*Hornella*

T.C. 28/5/24.

*Eucnemis*

Workman Clark

473

Mid. Section

4.3.24

N<sup>o</sup> 8.

004300-004307-0089



© 2020

Lloyd's Register  
Foundation



Marmella X

8

2 copies

Midship Section.

Workman Clark & Co.

H73-H.

\* Memphis Town \*

T.C. 28-5-24.

7-3-24.

"IMPERIAL VALLEY"

EX

Duchanness.

\*

"Skegness"

Now

SACRAMENTO VALLEY.

W. N.  
T. V. C. 171-

RETAIN



© 2020

Lloyd's Register  
Foundation

004300-004307-0039

