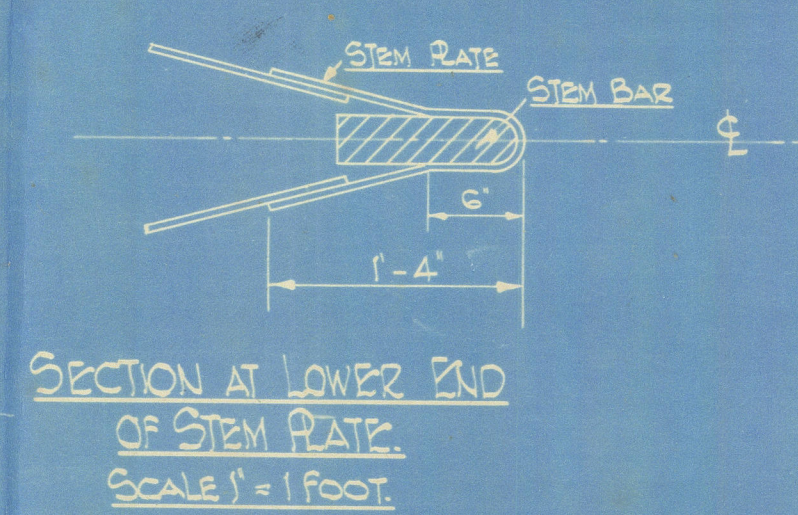
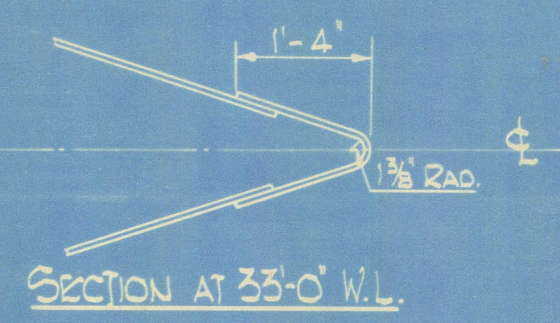
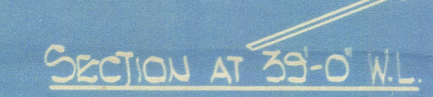
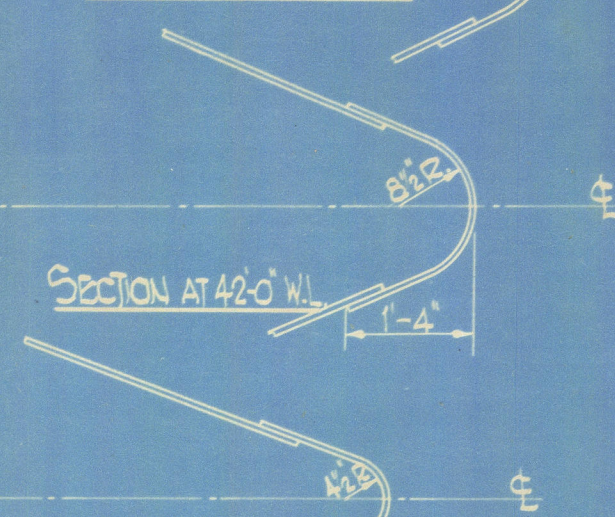
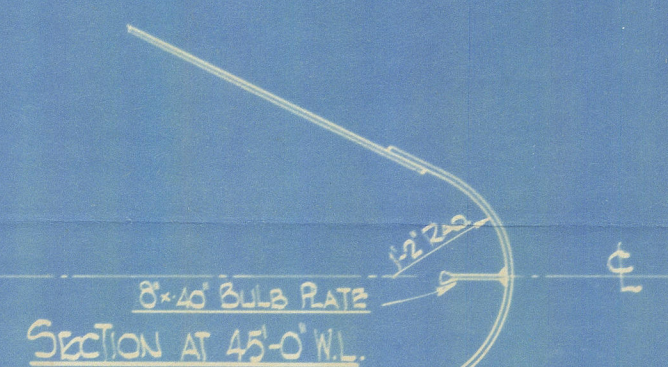
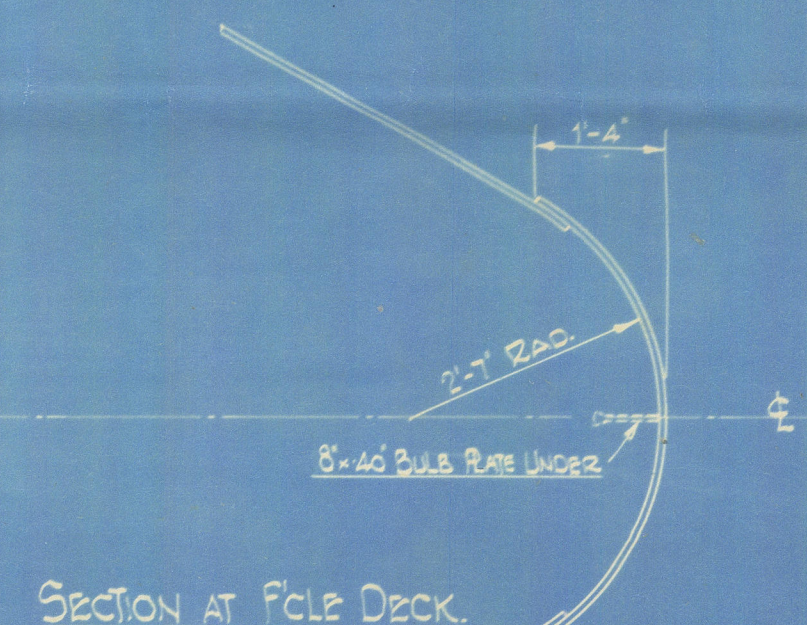
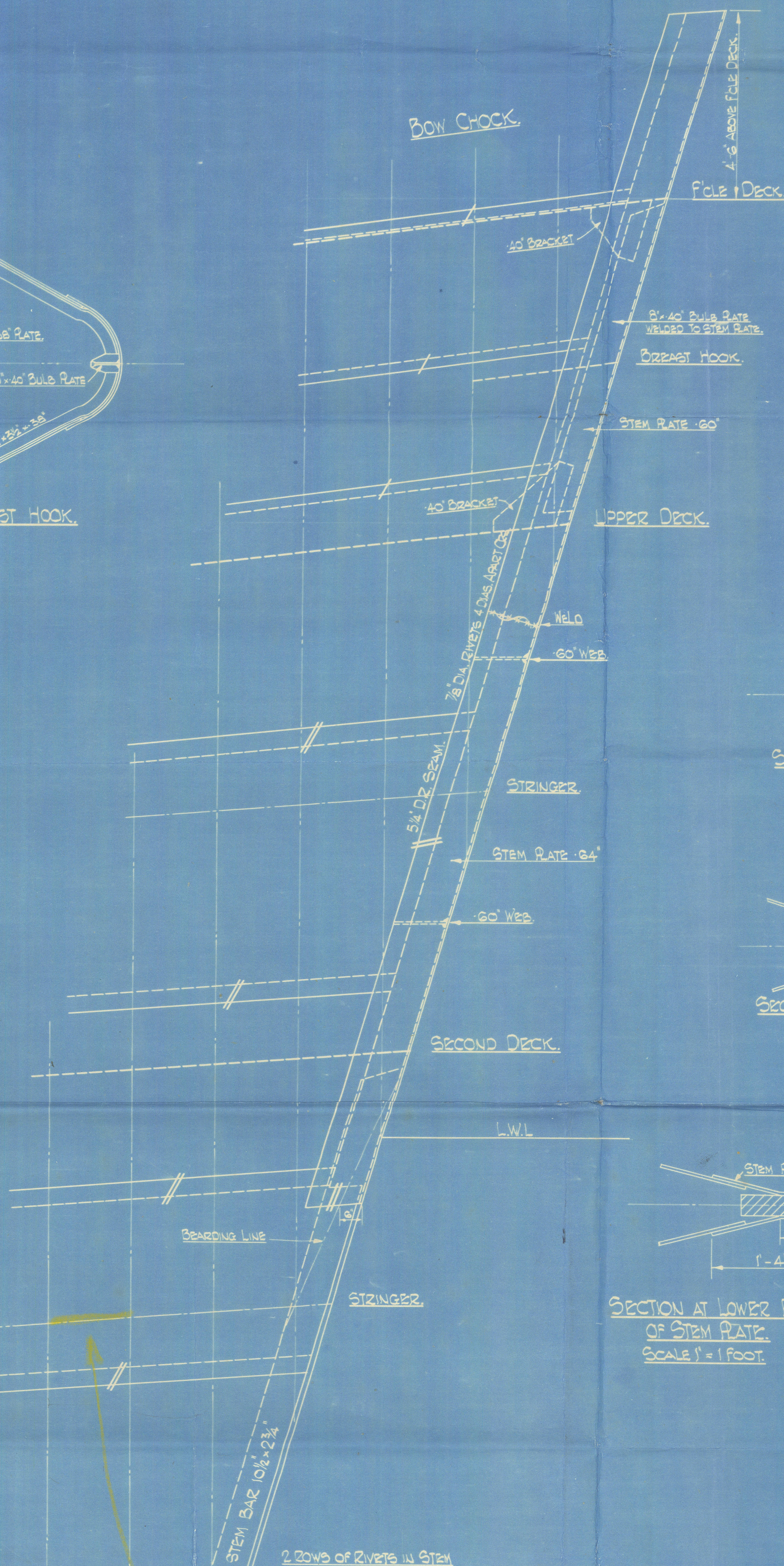
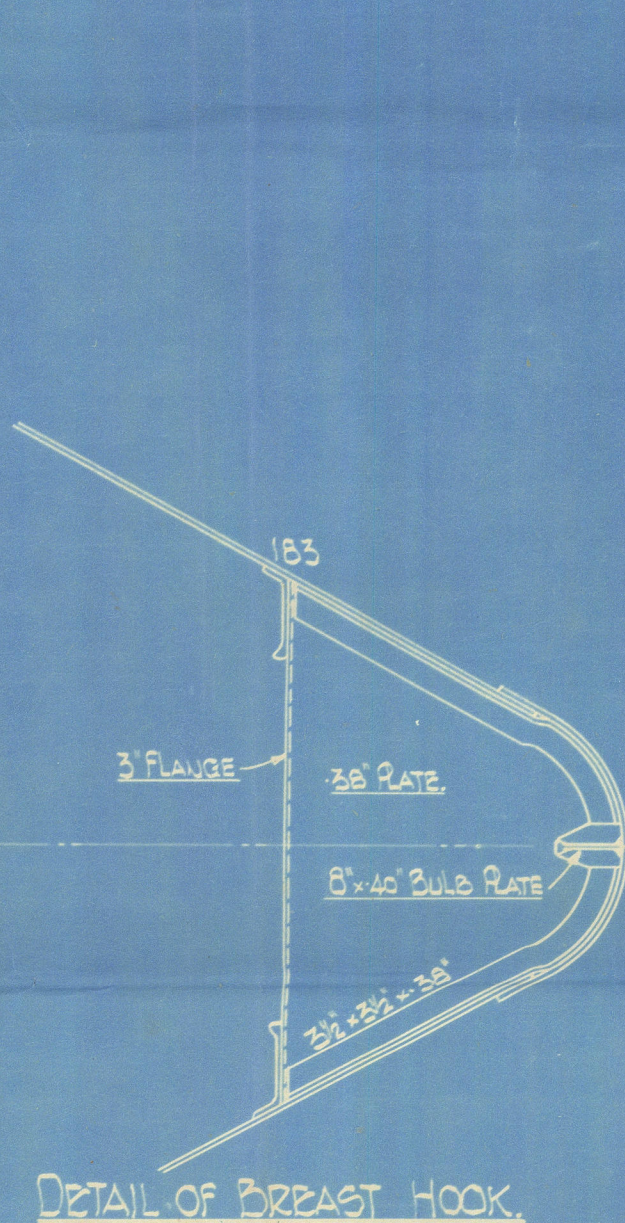
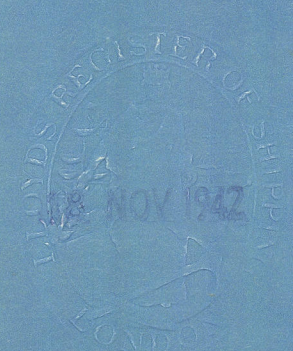


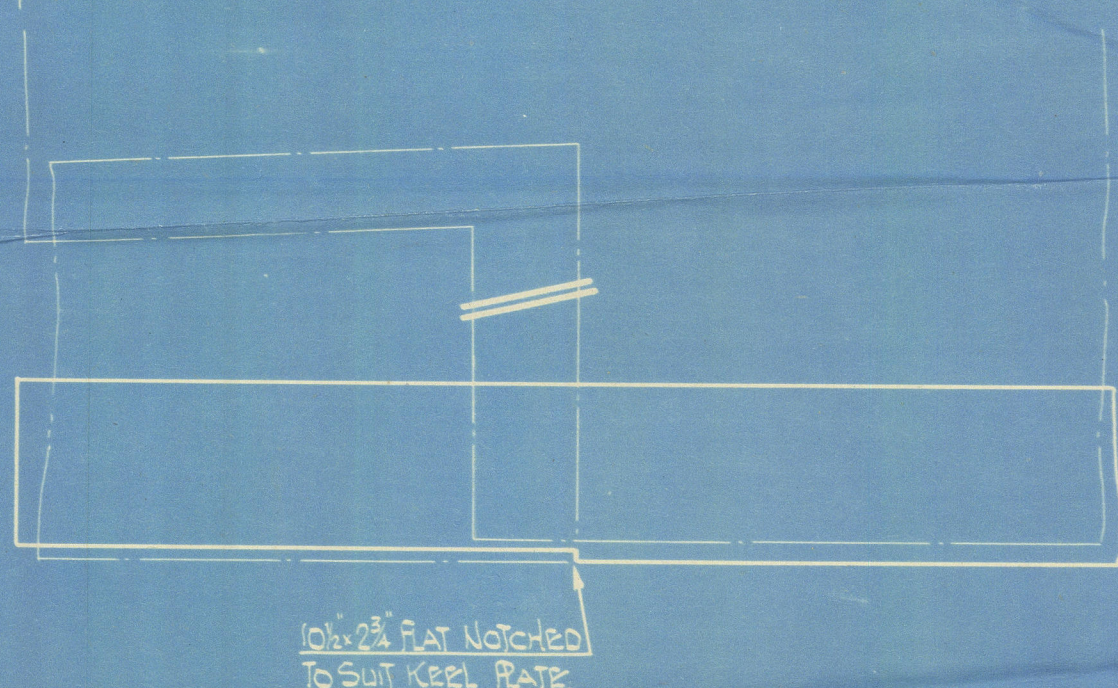
# Nos 356-7-8. STEM CONSTRUCTION.

SCALE  $\frac{1}{2}" = 1 \text{ FOOT.}$

PLAN No 6.



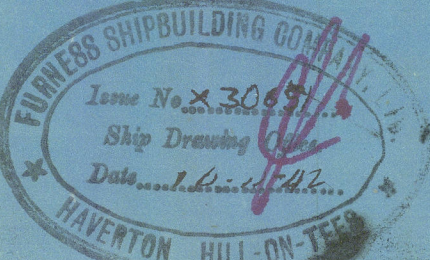
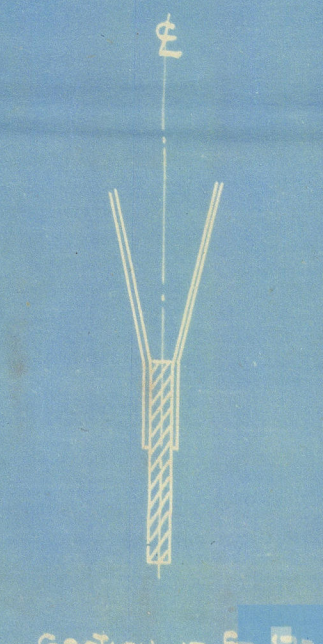
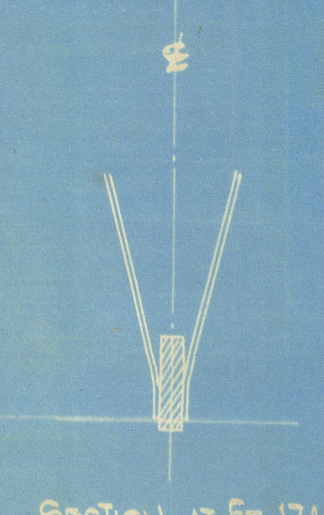
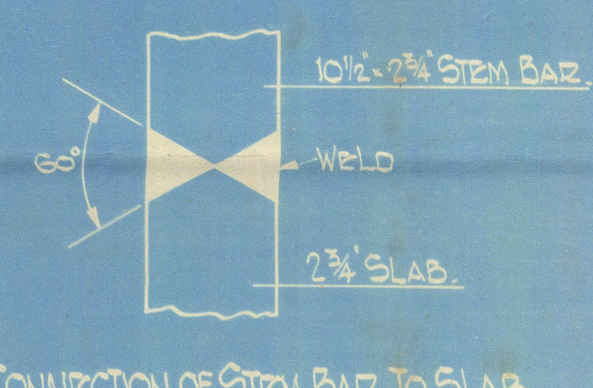
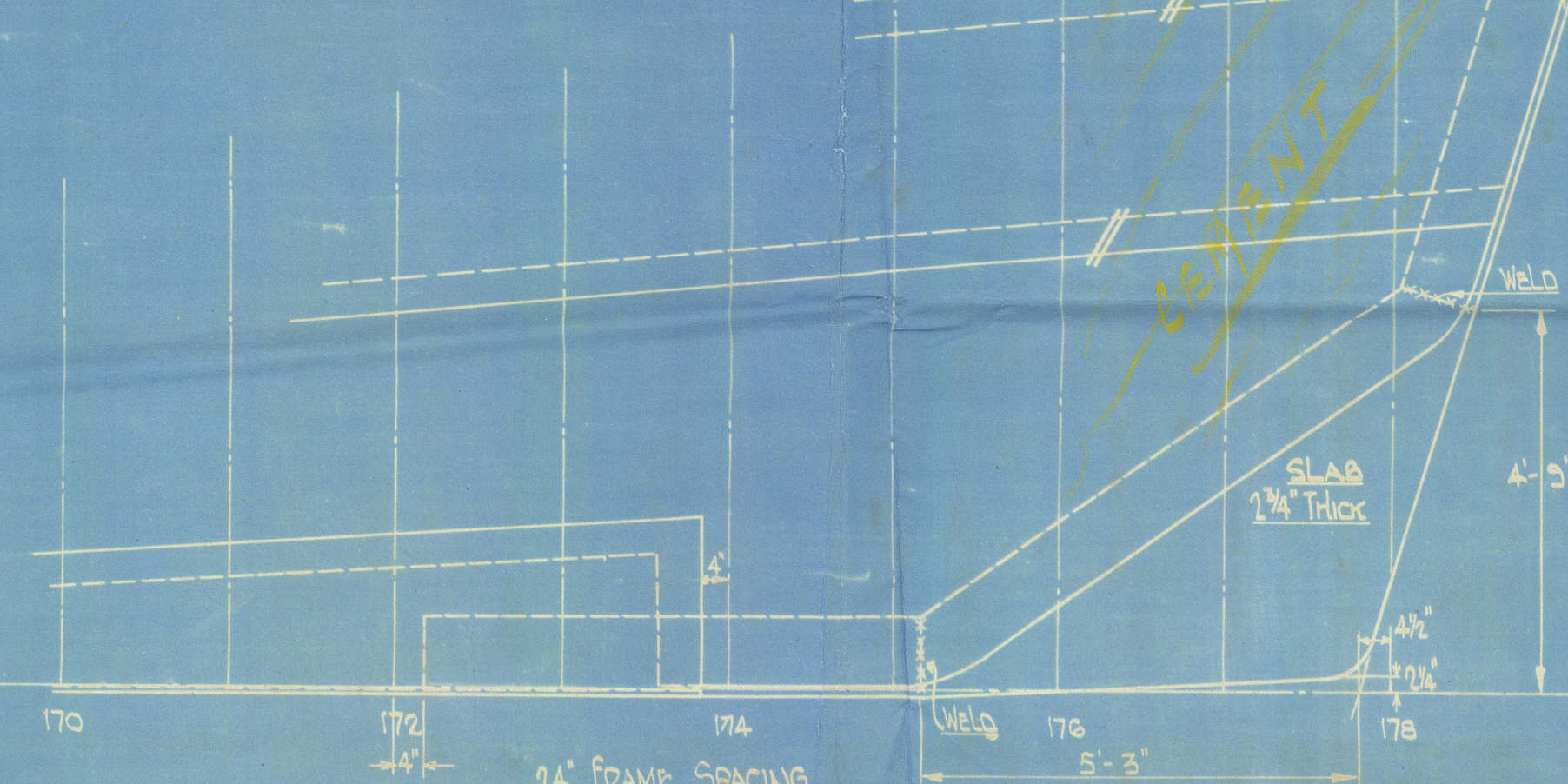
DETAIL OF NOTCH IN STEM BAR  
SCALE 1" = 1 FOOT.



2 ROWS OF RIVETS IN STEM BAR 1\"/>

TIR PLATES 18\"/>

Nos 2-3-4  
N357 EMPIRE LAW (ONLY)



T. No 5561.



(13)

Furness S B Co Ltd

356/7/8-9-60

Stem Construction

18-11-42

(13)

S.S.  
MDB. RPT. No.

Wave Conqueror

(13)

004275-004284-0206

7

FURNESS S B CO LTD

Nº 356-7-8-9-60.1-2

STEM CONSTRUCTION.

H-18

18-11-42.

S.S. "Empire Bounty"  
MDB. RPT. No. 17594.

S.S. "Empire Law Wave Conqueror"  
MDB. RPT. No. 17621

S.S. "Empire Melner"  
MDB. RPT. No. 17674

S.S. "Empire Paladine"  
MDB. RPT. No. 17701

S.S. "Empire Protector"  
MDB. RPT. No. 17736

S.S. "Wave Conqueror"  
MDB. RPT. No. 17765

S.S. "Wave Conqueror"  
MDB. RPT. No. 17824

Lloyd's Register  
Foundation