

Lloyd's Register of Shipping.

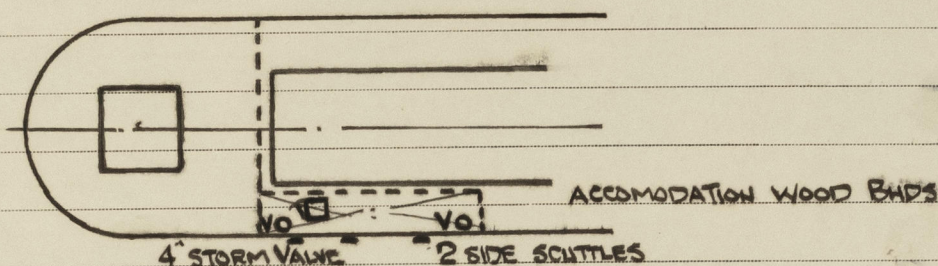
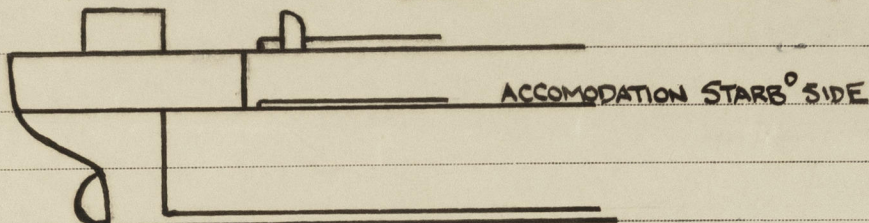
Ship's Name

SS. OCEAN VOLGA

Official No. 168311

Memorandum of alterations reported since ship was surveyed for assignment of Load Lines
in 1942.

STEEL COMPANION STARB SIDE, OF SUBSTANTIAL CONSTRUCTION 15" SILL



TEMPORARY ACCOMMODATION IN STARB SIDE AFT TWEEN DECKS.

ENTRANCE TO ACCOMMODATION FROM UPPER DECK TO 2ND DECK BY STEEL COMPANION
SUBSTANTIALLY CONSTRUCTED WITH SOLID WOOD DOOR 3'-6" X 2'-0" WIDE X 2" THICK WITH 1/4"
STEEL PLATE BACKING. SILL HEIGHT 15" 22"

ONE SIDE SCUTTLE 10" DIA AND ONE 16" DIA: FITTED IN WAY OF ACCOMMODATION SUBSTANTIALLY
CONSTRUCTED AND FITTED WITH HINGED DEADLIGHTS

ONE 4" SANITARY DISCHARGE FITTED WITH G.M. STORM VALVE & GATE VALVE OPERATED FROM
UPPER DECK

2 - 6" DIA VENTILATORS - COAMING 15" X 30" THICK. WOOD PLUGS AND CANVAS
COVERS SUPPLIED

Noted J. W. B.

J. Zandron
Swansea

30-10-42

-2 NOV 1942

See Survey letter 7/1/43