

LLOYD'S REGISTER OF SHIPPING

UNITED WITH THE BRITISH CORPORATION REGISTER

SURVEYS FOR FREEBOARD.

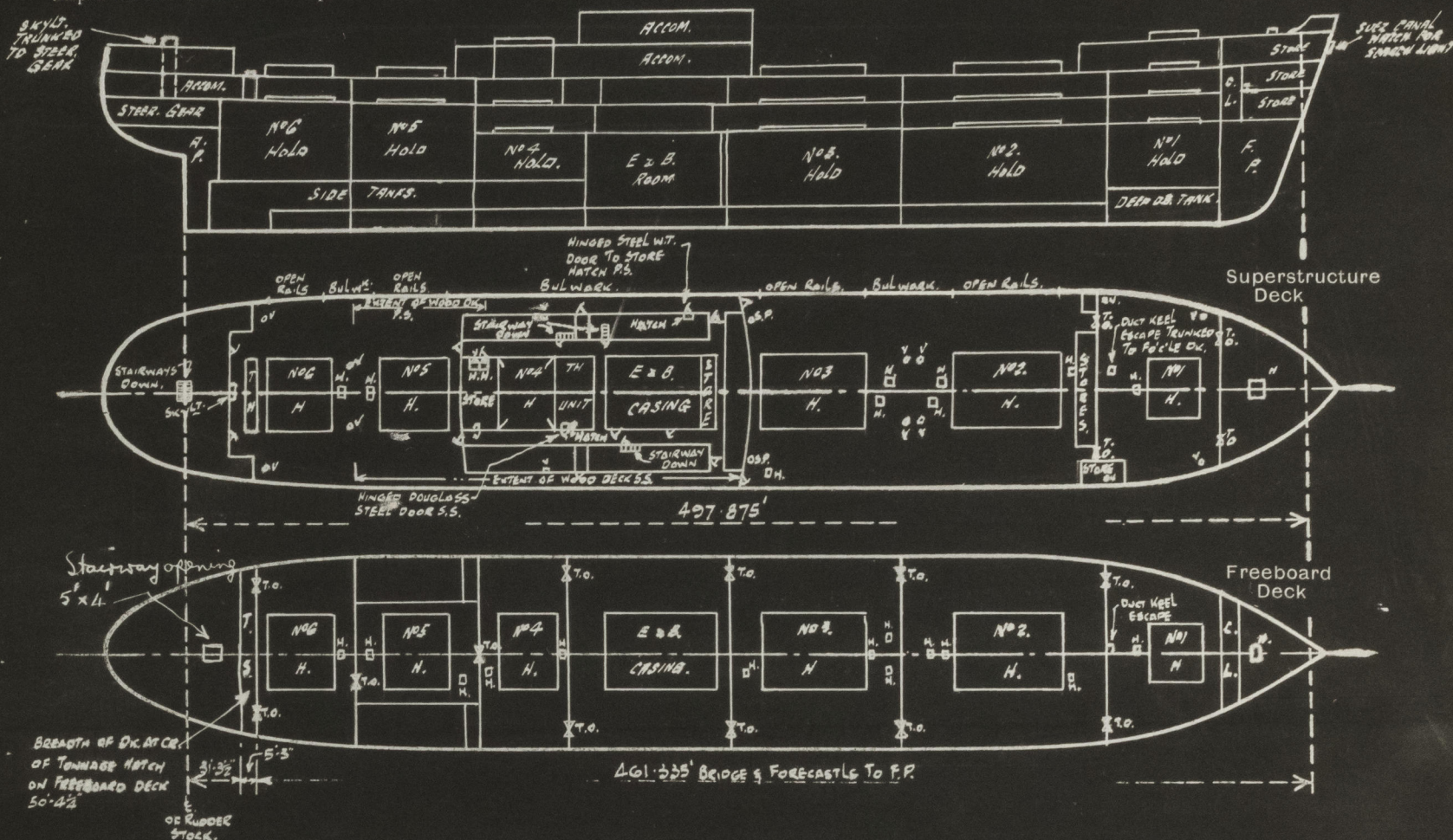
(CONDITIONS OF ASSIGNMENT.)

Index No.
(For London Office only.)

GRK REPORT NO. 25858.

Ship's Name AYRSHIRE. Port of Survey GREENOCK.
Official Number 300171 Surveyor's Signature Alfred J. Moore
Nationality and Port of Registry BRITISH GLASGOW. Date of Survey DURING CONSTRUCTION.

Disposition and dimensions of superstructures, trunks, deckhouses, machinery casings and wood sheathing to be inserted in the diagrams and tabular statement:—



Particulars of Superstructures, Trunks, Casings, Deckhouses.

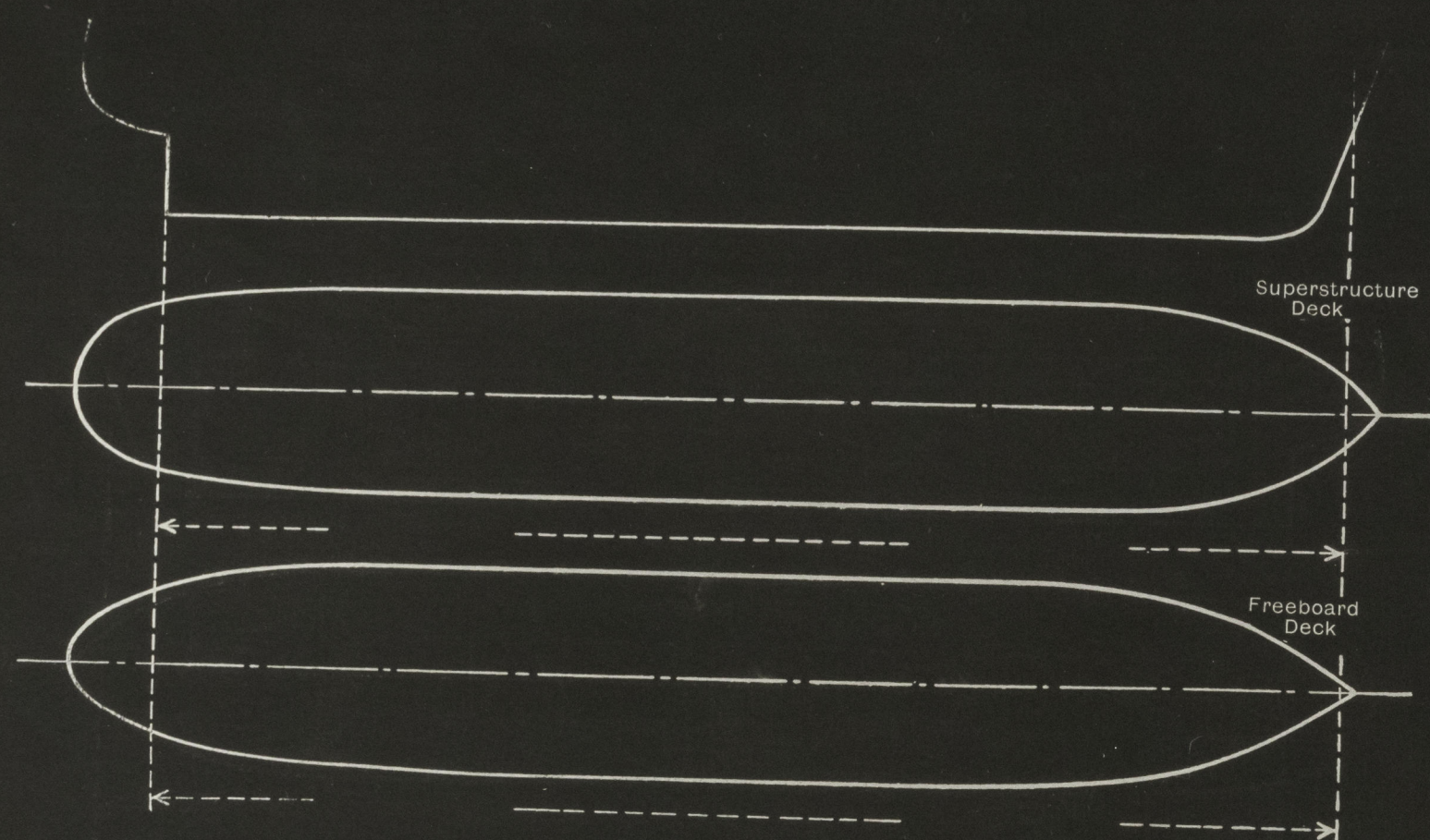
	Coaming	Plating	Stiffeners	Spacing	End Attachments of Stiffeners	Size of Openings	Height of Sills	Height, Beam to Beam
Poop Bulkhead26"	.26"	3" x 3" x .38"	3 1/2" / 33"	NONE	NONE	-	8'-6"
Raised Quarter Deck Bulkhead ...								
Bridge, After Bulkhead ...								
Bridge, Forward Bulkhead ...								
COMBINED BRIDGE & Forecastle Bulkhead... }	.26"	.26"	3" x 3" x .38"	3 1/2" / 33"	NONE	4'-1" x 3'-1"	15"	8'-6"
Trunks, etc. ...								
Trunks, Forward ...								
ENCLOSED Machinery Casings on Freeboard or Raised Quarter Decks ...	15" x .49"	.29"	3" x 2 1/2" x .32"	.33"	CARRIED UP AT TOP RIVETED AT BOTTOM	5'-2" x 2'-0"	17"	8'-6"
ENCLOSED Machinery Casings on Superstructure Decks ...	15" x .34"	.25"	3" x 2 1/2" x .32"	.33"	3KTS AT TOP CARRIED DOWN AT BOTTOM	5'-6" x 4'-11"	15"	8'-3"
Machinery Casings within Superstructures not fitted with Class I Closing Appliances ...	15" x .34"	.25"	3" x 2 1/2" x .32"	.33"	CARRIED UP AT TOP CARRIED DOWN AT BOTTOM	5'-2" x 2'-0"	17"	8'-3"
Deckhouses and Pump Room Entrances	.30"	.30"	5" x 3" x .34"	.33"	WELDED TOP & BOTTOM	4 @ 5'-3" x 2'-9" 2 @ 5'-3" x 2'-3"	18"	8'-3"

Particulars of Closing Appliances (state if capable of being manipulated from both sides).

Poop Bulkhead ...	NO OPENINGS. ✓
Raised Quarter Deck Bulkhead ...	
Bridge, After Bulkhead ...	
Bridge, Forward Bulkhead ...	
COMBINED BRIDGE & Forecastle Bulkhead... }	1 - TONNAGE OPENING (P/S) FITTED WITH PORTABLE PLATE SECURED BY HOOK BOLTS NOT PASSING THRU' BULK. ✓
ENCLOSED Machinery Casings on Freeboard or Raised Quarter Decks ...	1 - DOUGLAS STEEL DOOR (SS) CAPABLE OF BEING OPERATED FROM BOTH SIDES. ✓
ENCLOSED Machinery Casings on Superstructure Decks ...	1 - WOODEN DOOR (P/S) CAPABLE OF BEING OPERATED FROM BOTH SIDES. ✓
Machinery Casings within Superstructures not fitted with Class I Closing Appliances ...	2 - DOUGLAS STEEL DOORS (P/S) CAPABLE OF BEING OPERATED FROM BOTH SIDES. ✓
Deckhouses and Pump Room Entrances	3 - SOLID TEAK 2" TH. WOOD DOORS (P/S) CAPABLE OF BEING OPERATED FROM BOTH SIDES. ✓

"HYRSHIRE" GREENOCK RPT. No 25858.
PARTICULARS OF PROTECTION TO OPENINGS, ETC.

The following diagrams should be used to indicate the positions of cargo and coaling hatchways, gangway, cargo and coaling ports, side scuttles, scuppers, ventilators, companionways, etc., which would affect the seaworthiness of the ship :—



FUNNEL & VENTILATOR COVERINGS OF STEEL, EFFICIENTLY CONSTRUCTED ✓
ENGINE ROOM SKYLIGHT OF STEEL STRONGLY CONSTRUCTED WITH HINGED STEEL COVERS. ✓

Particulars of Flush Bunker Scuttles :— *NONE.* ✓

Particulars of Companionways :

(including those incorporated in deckhouses and masthouses)
POOP DECK: ACCESS TO POOP SPACE ENCLOSED IN STANDING STEEL DECKHOUSE.
DECK OPENING PROTECTED BY 2" SOLID TANK DOOR 5'-0" x 2'-6"
CAPABLE OF BEING OPERATED FROM BOTH SIDES. SILL 20"
ABOVE HOOD DECK.
POOP SPACE: BETWEEN UPPER & POOP DECK. OPENING ENCLOSED IN
STANDING STEEL DECKHOUSE. OPENING PROTECTED BY 2-2"
SOLID TANK DOORS - 5'-0" x 2'-3" CAPABLE OF BEING OPERATED
FROM BOTH SIDES - SILL 20" ABOVE HOOD DECK.

INSIDE MIDSHIP ACCOMMODATION ON SHELTER DECK: -
ACCESS HATCHES TO NO. 4 & 5 TRENCHES (300)
ENCLOSED IN STRONG STEEL DECKHOUSE DECK
OPENING PROTECTED BY HINGED DOUGLAS STEEL
DOORS 5'-3" x 1'-6" CAPABLE OF BEING
OPERATED FROM BOTH SIDES
HEIGHT OF SILLS 18"

ACCESS HATCH TO DOMESTIC CHAMBERS P.S.
ENCLOSED BY STRONG STEEL DECKHOUSE
PROTECTED BY STEEL H.T. DOOR 5'-3" x 2'-4"
HEIGHT OF SILL 18" DOOR SECURED BY 6
TURNBUCKLES CAPABLE OF BEING OPERATED
FROM BOTH SIDES

DECK COMPENSATION HAS BEEN FITTED IN WAY OF OPENING

Particulars of Ventilators in exposed positions on freeboard and superstructure decks :—

FOGLE DK:						
4 @ 8"	CV	TO	STOREROOM	CAMING	36" x 36"	✓
1 @ 9"	"	"	"	"	36" x 40"	✓
2 @ 21"	"	"	"	"	36" x 40"	✓
2 @ 23"	"	"	"	"	36" x 40"	✓
1 @ 14"	"	"	STOREROOM	"	36" x 36"	✓

UPPER DK (FORD WELL)
2 @ 16 1/2" DIA C.V. TO NO 3 UPPER TH. O.K.S. CORNING 36"x.38"
2 @ 18" " CV TO NO 2 " " " " 36"x.40"

BRIDGE DK:-
2 @ 14" DIA CV TO NO 4 UPPER TN. DKS " 36" x 36" ✓

UPPER DK: - (AFTER HELL)
 2 @ 1 1/4 DIA CV. TO NO 6 UPPER TN. DKS " 36" x .34 ✓
 2 @ 1 1/4 " CV " (ON TOP OF MASTHOUSE) TO " 30" x .40 ✓
 NO 6 H. = TNEEN DK.

UPPER DK :- (MIDSHIP PASSAGE)
2@ 8'x6" SNV TO STOREROOMS " 30" x 3/8" ✓
2@ 4'x4" " " " " 30" x 3/8" ✓

ALL YENTS FITTED WITH WOOD PLUGS & CANVAS COVERS

FORECASTLE DK:- 8'-4" DIA. AIR PIPES 18" TO OPENING ✓
2'-3" " " " " " " " ✓
2'-2" " " " " " " " ✓

BRIDGE DK:- 12'-3" " " " " " " " ✓
1'-2" " " " " " " " ✓

BOAT DK:- 1'-6" " " " " " " " ✓

POOP DK:- 3'-3" " " " " " " " ✓

UPPER DK: -

7	-	5"	DIA	AIR	PIPES	30"	TO	OPENING	✓
2B	-	4"	"	"	"	"	"	"	✓
24	-	3"	"	"	"	"	"	"	✓
6	-	2 1/2"	"	"	"	"	"	"	✓

AIR PIPES TO DE. TANKS FITTED WITH GAUZE & CANVAS COVERS ✓
" " " WATER " " " WOOD PLUGS & CANVAS COVERS



HATCHWAYS ON FREEBOARD AND ON STRUCTURAL DECKS.									
Description of Hatchway		No 1	No 2	No 3	No 4	No 5	No 6		
Dimensions of Hatchway		22'-6" x 18'-0"	48'-9" x 22'-0"	35'-9" x 22'-0"	30'-3" x 22'-0"	30'-3" x 22'-0"	22'-0" x 22'-0"		
COAMINGS	Height above Deck	12' x 3 1/2" x 44' 00"							
	Thickness								
	Stiffeners	NONE							
	Brackets, Stays								
HATCH BEAMS	Number	3	9	7	5	5	3		
	Spacing	5'-7 3/8"	4'-10 1/8"	4'-5 1/4"	5'-0 1/6"	5'-0 1/6"	5'-6 3/32"		
	Scantling and Sketch								
	Bearing Surface	4"	3 1/2"	3 1/2"	3 1/2"	3 1/2"	3 1/2"		
	Number								
	Spacing								
	Unsupported Lengths								
	Scantling* and Sketch	NONE.							
	Bearing Surface								
	HATCH COVERS	Material	WOOD						
Thickness		2 3/4"							
How fitted		F.T.F.							
Bearing Surface		3 1/2"							
Spacing of Cleats		24' H.P.R.T.							
Number of Tarpaulins		ONE							
*Are wood fore and afters steel shod at all bearing surfaces? NONE ✓									
Are battens and wedges efficient and in good condition? YES									
Are tarpaulins in good condition and in accordance with rule requirements? YES									
Are lashings provided in accordance with rule requirements? YES.									
Are wood covers fitted with galvanised end bands? YES.									

Particulars of any special features: (Timber Deck cargo fittings, Skylights, Sewage Systems, Ash Ejectors, Rubbish Storage, etc.)

Particulars of Gangway Cargo and Coaling Ports :—

Particulars of Scuppers and Sanitary Discharge Pipes :—

Particulars of Side Scuttles and Deadlights :—

Vertical distance of Sill of lowest Side Scuttle above top of keel..

38'-2³/₄"

Distance from amidships to centre of lowest Side Scuttle.

3-3 1/2 FORD. OF. MIDSHIPS.

Particulars of Guard Rails and Bulwarks :—

LIFELINES FITTED

Lloyd's Register
Foundation

26.
OF

STAIRN
DOWN

26.
OF

26.
OF

26.
OF

26.
OF

26.
OF

26.
OF

