

N^o 22.
S. S. LOUISIANA

PROFILE & DECK PLANS

DIMENSIONS 363'-0" x 51'-2 1/2" x 35'-6" W/L SHUTTER DECK

TO CLASS AT LLOYDS 100A.1 SHUTTER DECK WITH FRAMES

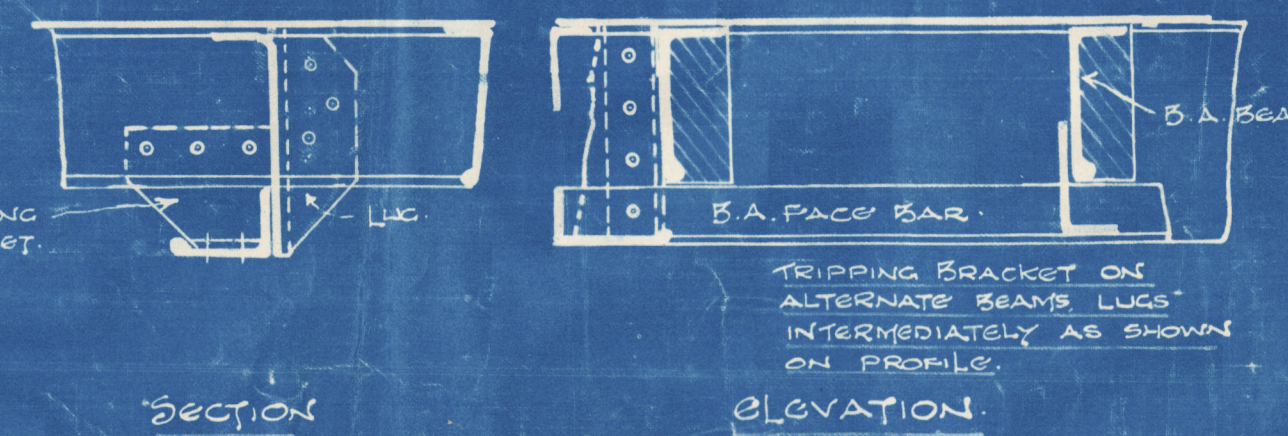
SCALE 1/4" = 1' FOOT

TRANSVERSE NO. 77-50

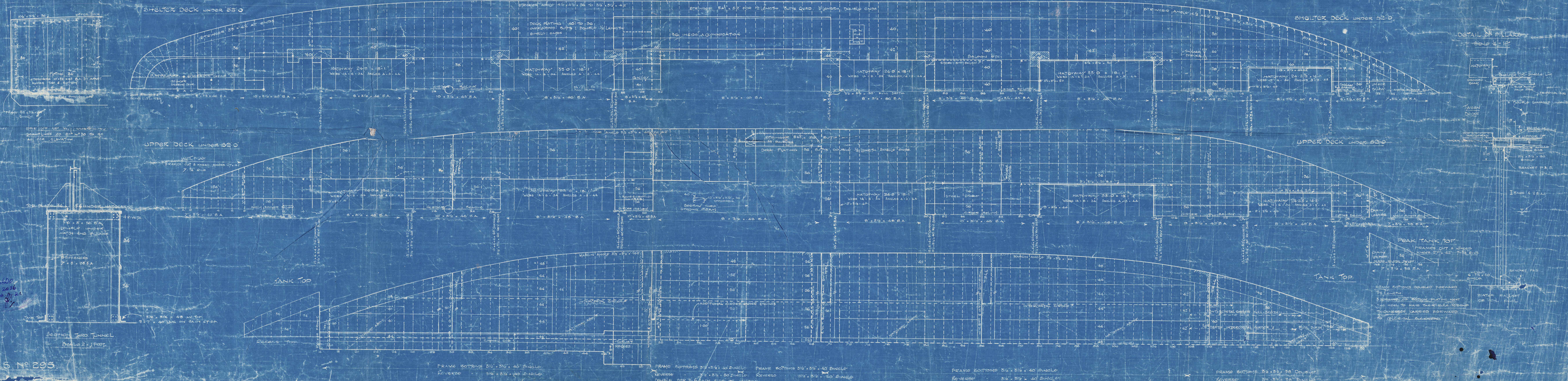
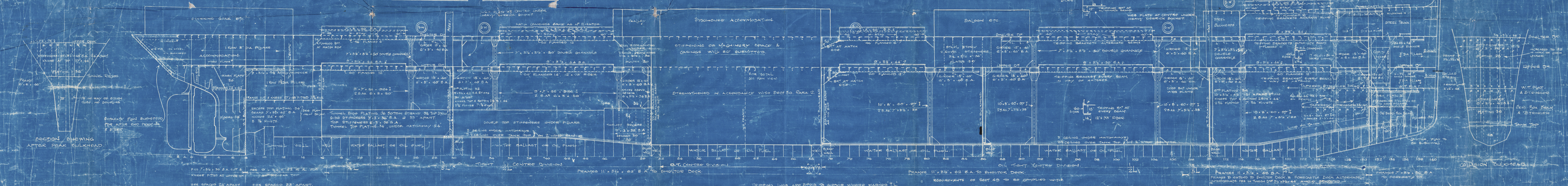
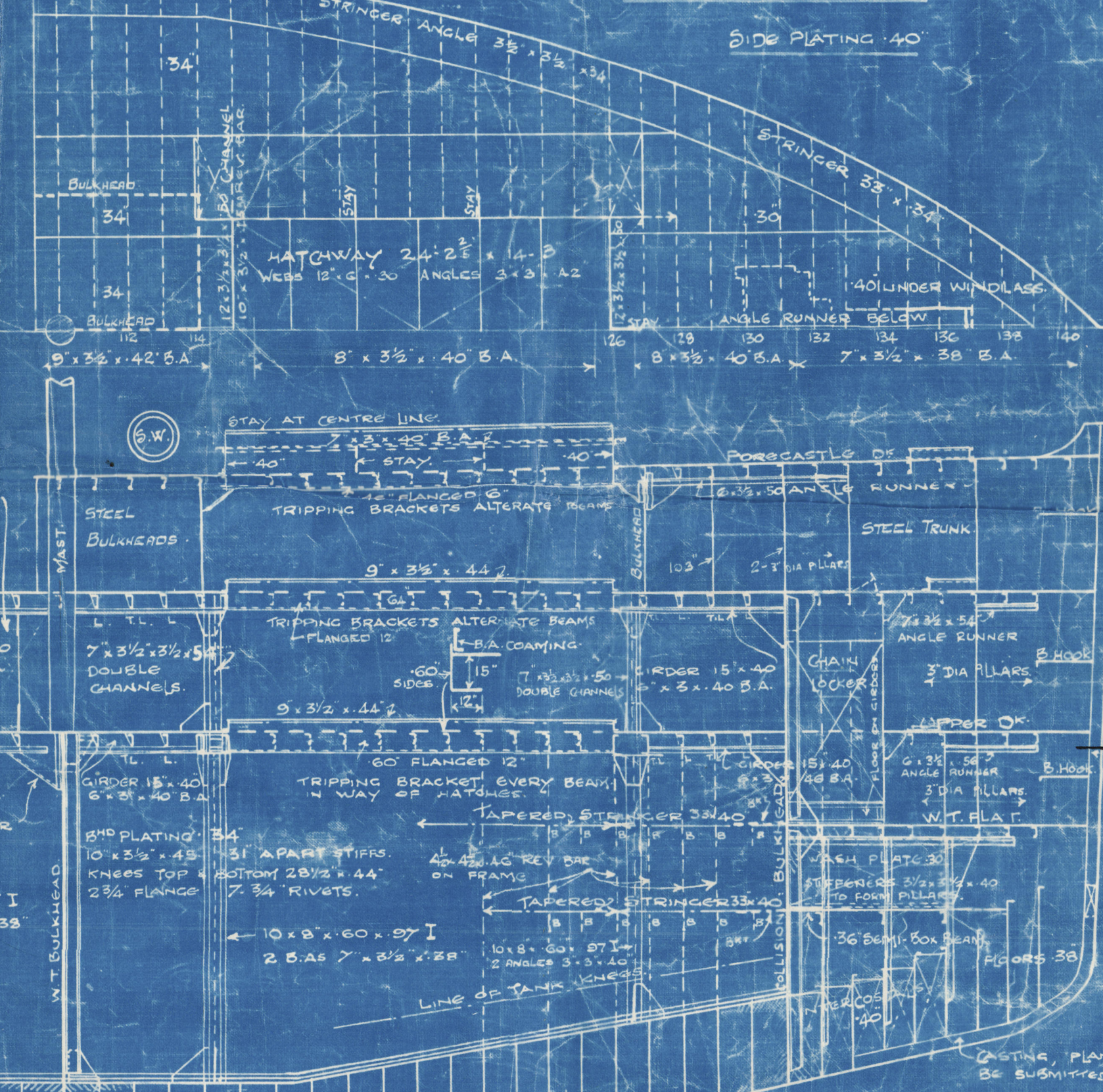
LONGITUDINAL NO. 281-32

REVERSES ON HATCH END BEAMS TO EXTEND FROM SHIP SIDE TO HATCH SIDE

Sketch of GIRDER UNDER SHUTTER DECK



FORECASTLE DECK



S. N^o 295

FRAME BOTTOMS 3 1/2' x 3 1/2' x 40 SINGLE
REVERSE 3 1/2' x 3 1/2' x 40 SINGLE

FRAME BOTTOMS 3 1/2' x 3 1/2' x 40 SINGLE
REVERSE 3 1/2' x 3 1/2' x 40 SINGLE

FRAME BOTTOMS 3 1/2' x 3 1/2' x 40 SINGLE
REVERSE 3 1/2' x 3 1/2' x 40 SINGLE

FRAME BOTTOMS 3 1/2' x 3 1/2' x 40 SINGLE
REVERSE 3 1/2' x 3 1/2' x 40 SINGLE

FRAME BOTTOMS 3 1/2' x 3 1/2' x 40 SINGLE
REVERSE 3 1/2' x 3 1/2' x 40 SINGLE

Mess. Turner. S.B. 602

Nº 22

PROFILE - DECK PLANS

(AS BUILT)

n/n "MONTE MONCAYO"

S. S. LOUISIANA

Mat. Rpt. hº

MIDDLESBRO' 10997

RETAIN



© 2021

Lloyd's Register
Foundation

004263-004274-0002 1/2

FOR ENCLOSURE TO

Lloyd's,

Middlesbrough.

From FURNESS SHIPBUILDING CO. LD.
HAVERTON HILL-ON-TEES.

DD2 2/2

STIFFENERS 10

KINGS AT