

# DIMENSIONS.

LENGTH OVER ALL : 365'-7" = 111.43m  
 " BETWEEN PP : 350'-0" = 106.68m  
 BREADTH MOULDED : 50'-6" = 15.39m  
 DEPTH MOULDED TO MAIN-DECK : 28'-0" = 8.53m  
 DRAFT ON SUMMER FREEBOARD : 23'-2 1/4" = 7.067m

# MACHINERY.

ONE SIX CYLINDERS DIESELMOTOR.

FOUR CYCLE SINGLE ACTING

DIAMETER OF CYLINDERS : 2'-0 3/8" = 630mm

LENGTH OF STROKE : 4'-3 3/8" = 1300mm

REVOLUTIONS PER MINUTE : 100

DIAM. OF PROPELLER : 14'-8" = 4496mm

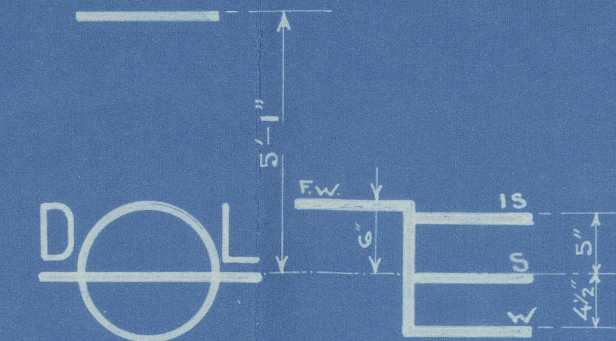
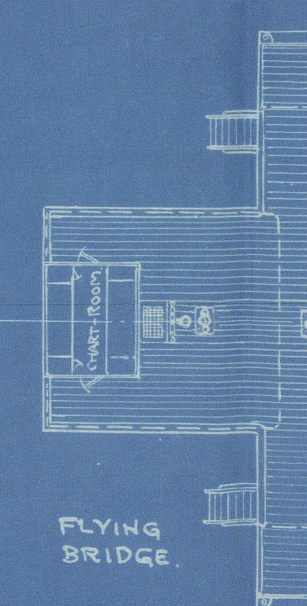
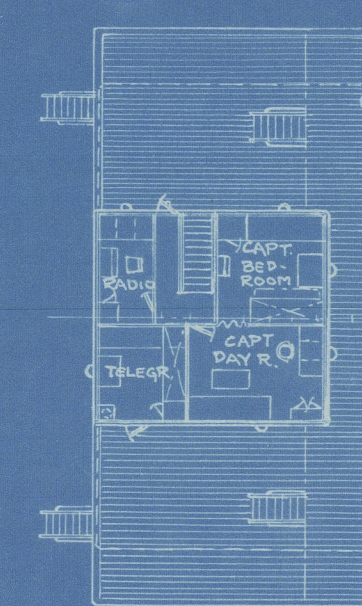
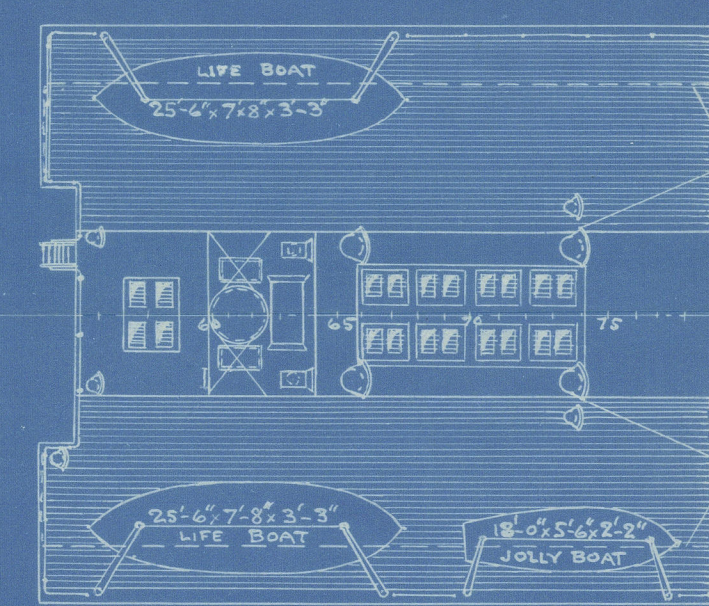
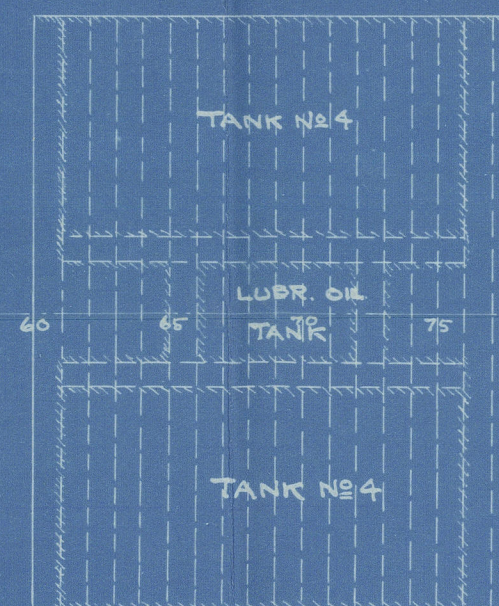
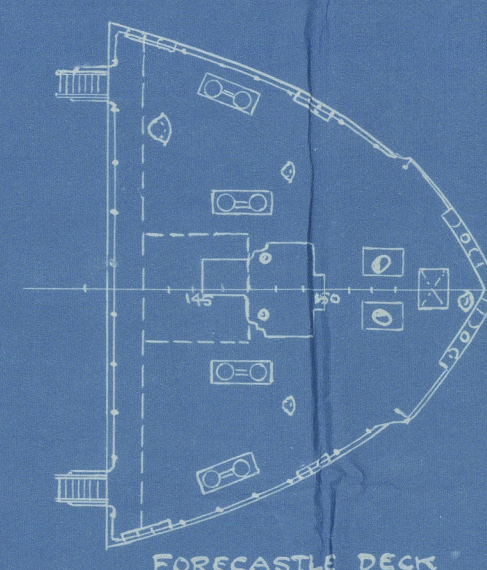
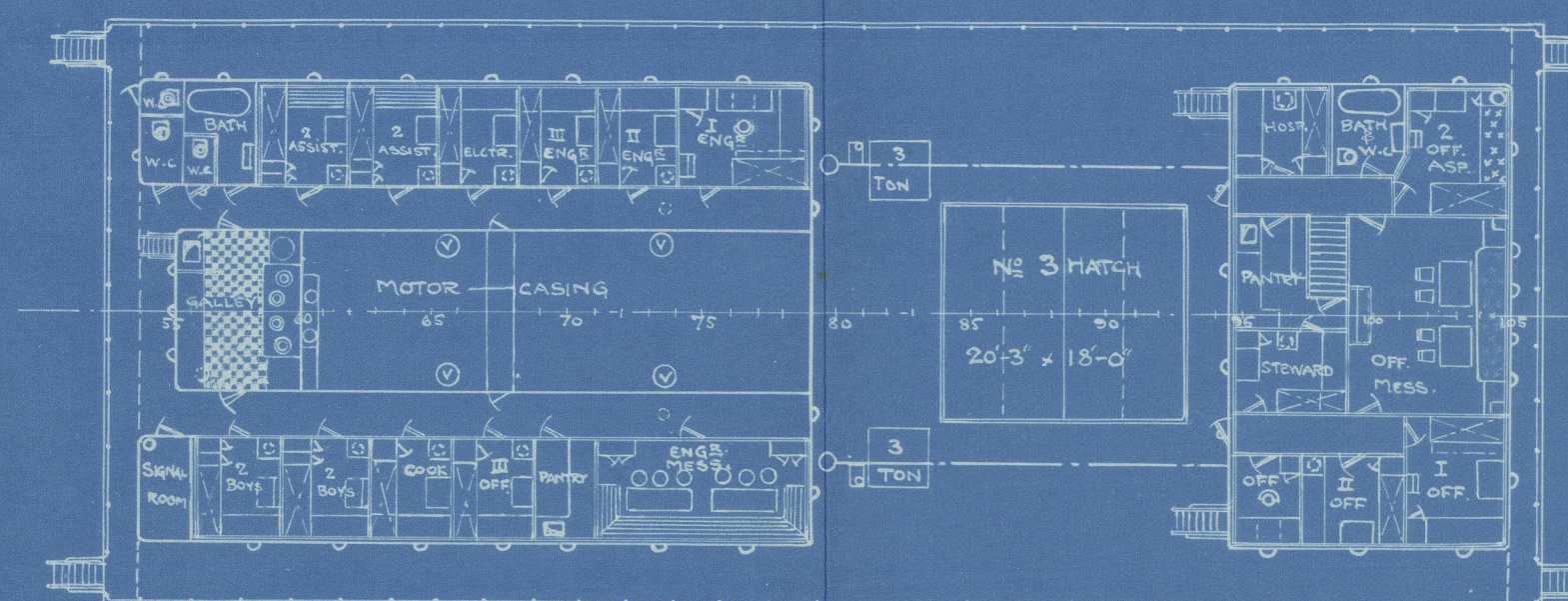
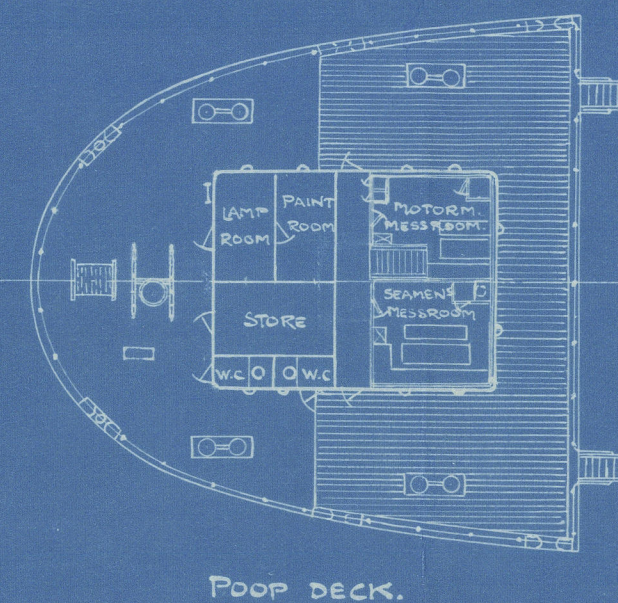
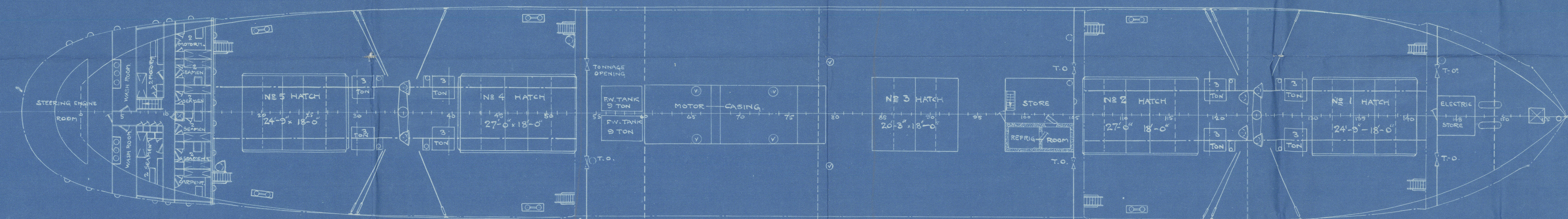
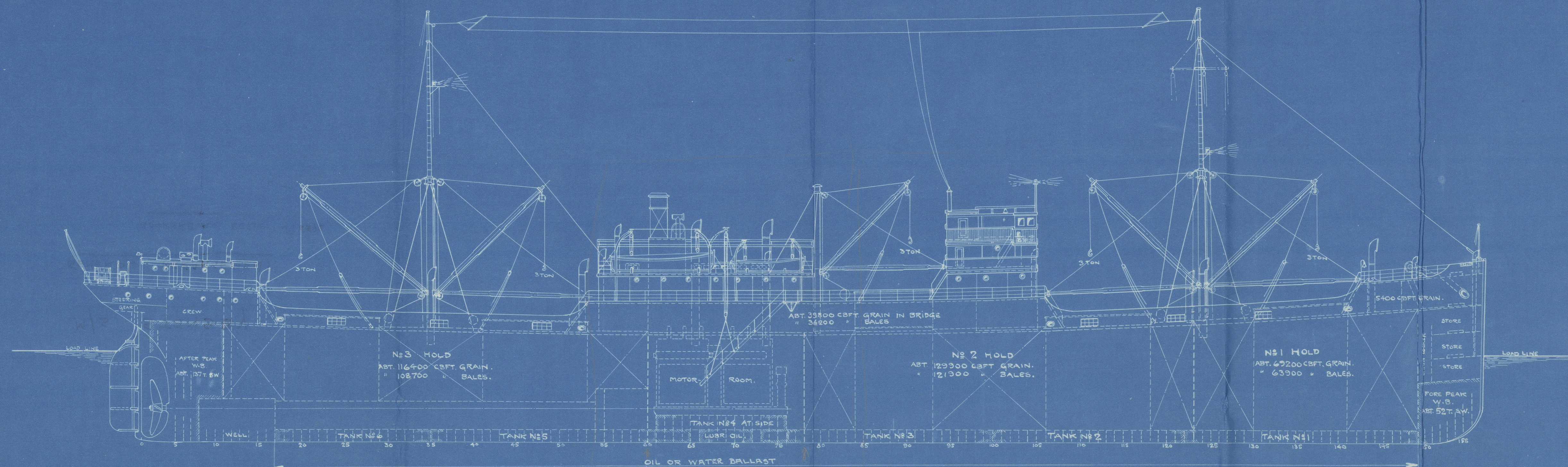
PITCH OF " : 11'-1" = 3378mm

# BALLASTTANKS FOR WATER AND FUELOIL TONS & 1016 KG.

WATER 1/2 1000	STARBOARD	PORT	TOTAL SB & P.
OIL 1/2 0.93	WATER OIL	WATER OIL	WATER OIL
TANK NR. 1			144 134
" " 2	935 87	935 87	187 174
" " 3	105 975	105 975	210 195
" " 4	111 103	111 103	222 206
" " 5	985 915	985 915	197 183
" " 6			63 58
PEAK TANK FORW.			51
" " AFT			133
TOTAL : (FRESH WATER +)			1207 950
LUBRIC. OIL TANKS			92

# CAPACITIES.

CARGO SPACES	GRAIN TO OUTSIDE PLATING AND DECK- PLATING, HATCHWAYS INCLUSIVE	BALES TO INSIDE OF SPARRING AND LOWER EDGE OF BEAM HATCHWAYS INCLUSIVE
HOLD NR. 1	69200 CBFT = 1960 M <sup>3</sup>	63200 CBFT = 1810 M <sup>3</sup>
" " 2	129800 " = 3678 "	121900 " = 3448 "
" " 3	116400 " = 3296 "	108700 " = 3078 "
SUM OF HOLDS	315500 " = 8934 "	294500 " = 8336 "
TWEEN DECK UNDER BRIDGE	39800 " = 1127 "	34200 " = 968 "
" " FORECASTLE	5400 " = 153 "	4400 " = 125 "
SUM OF TWEEN-DECKS	45200 " = 1280 "	38600 " = 1093 "
TOTAL CARGO SPACE	360700 " = 10214 "	333100 " = 9429 "



DEPTH IN METERS	SW. TONS & 1016 IN FRESH WATER	SW. TONS & 1016 IN SALT WATER	DEPTH IN FEET	TONS PER INCH IN SALT WATER
7000			24	36.3
6500			23	36.0
6000			21	35.6
5500			19	35.2
5000			17	34.8
4500			16	34.5
4000			14	34.1
3500			13	34.2
3000			12	34.2
2500			11	33.8
2000			10	33.8
1500			9	33.2
1000			8	33.2
500			7	
0			6	

M/S "STENSBY."

YARD No 221.

BUILT BY ERIKSBERGS MEK. VERKSTADS AB GÖTEBORG 1926  
 FOR

M/S MOTORTRAMP.

STENSBY DANMARK.

CLASS ENG 40YD 100 A1.

SCALE 1/1000

Lloyd's Register  
 Foundation



M/S. "STENSBY"

GENERAL ARRANGEMENT.

GOTHENBURG REPORT N<sup>o</sup> 6572.

OCT. 1926.

004249-004256-0077



© 2021

Lloyd's Register  
Foundation