

STERNFRAME.

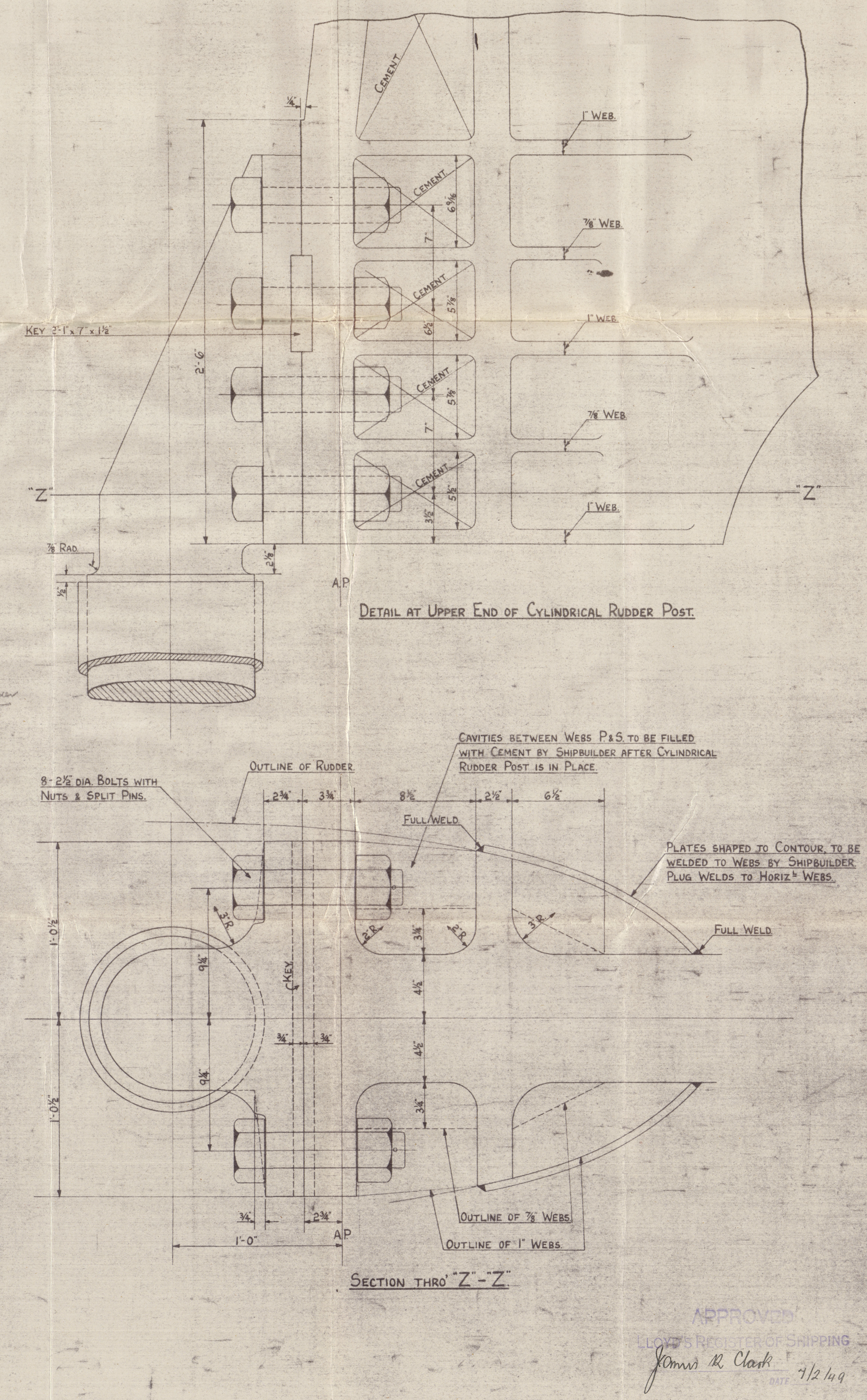
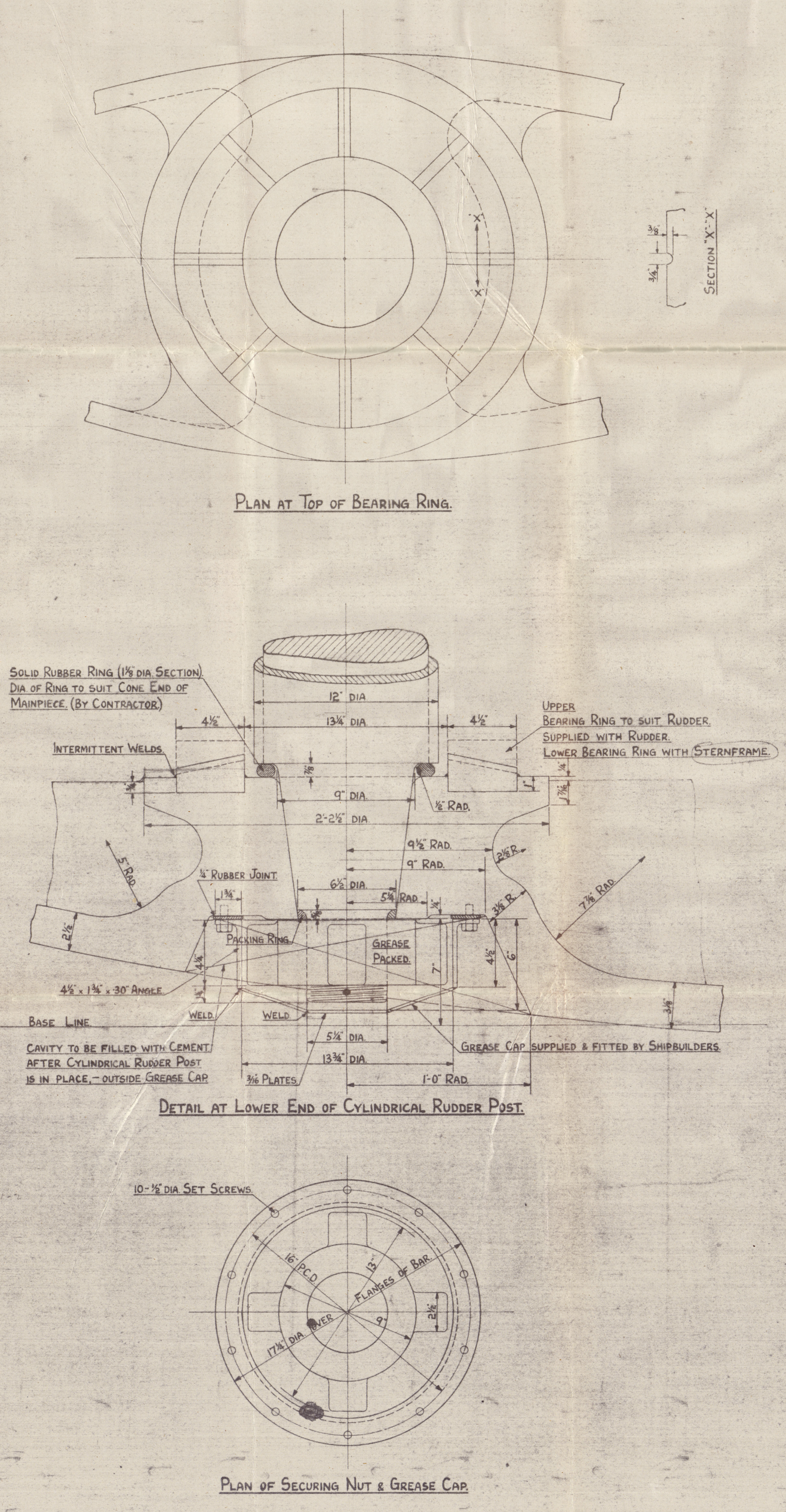
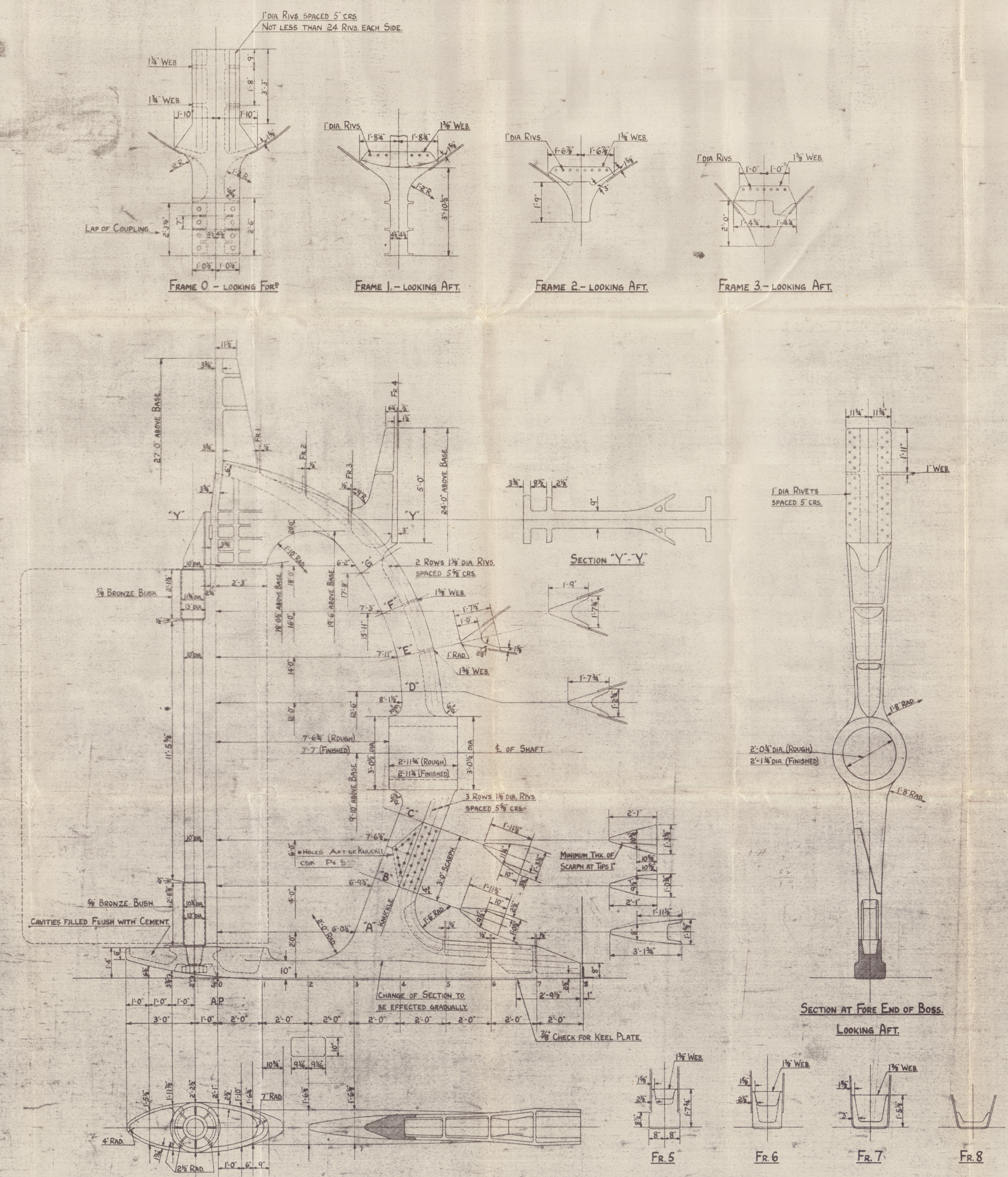
SCALES:- 1/2" & 3" = ONE FOOT.

STERNFRAME TO BE OF CAST STEEL TO LLOYD'S LATEST RULES & TESTS. HOLES TO BE DRILLED 1/8" LARGER IN DIAMETER THAN DIAMETER OF RIVET SHEWN (EXCEPT IN SCARPH). ALL RIVET HOLES TO BE DRILLED AS SPACED ON FULL SIZE SECTIONS SUPPLIED BY SHIPBUILDER. STERNFRAME MAKERS TO SUPPLY THE FOLLOWING:- CYLINDRICAL RUDDER POST OF FORGED STEEL WITH BRONZE BUSHES TO SUIT RUDDER, & COMPLETE WITH KEY, & ALL SECURING BOLTS & NUTS AS DETAILED ON THIS PLAN. ALL TO LLOYD'S LATEST RULES & TESTS.

PARTS MARKED IN RED TO BE MACHINED:-
BORE & ENDS OF BOSS, FACES OF SCARPH, HEEL OF STERNFRAME IN WAY OF KEELPLATE, COUPLING FACES, & BORE OF STERNFRAME IN WAY OF RUDDER POST. BRONZE BUSHES ON RUDDER POST.

APPROXIMATE WEIGHTS:-
CAST STEEL STERNFRAME 20 1/2 TONS
CYLINDRICAL RUDDER POST 3 TONS

WHERE MOULDS ARE SUPPLIED BY SHIPBUILDER THEY ARE TO BE WORKED TO IN PREFERENCE TO THIS PLAN.
FULL SIZE SECTIONS MARKED A, B, ETC. TO BE APPLIED AT POSITIONS MARKED ON THIS PLAN.



APPROVED
LLOYD'S REGISTER OF SHIPPING
James M. Clark
1/12/49

return for 1052

LITHGOWS 1042.3.52

6

STERN FRAME

1042

"BRITISH PATRIOT"

GREENOCK FIRST ENTRY REPORT NO. 24072

1043

"British Patriot"

Greenock I. E. Report No. 24192

No. 1052.

"British Patriot" ★

Greenock I. E. Report No. 24366

RECORDS DEPT.
LONDON

10



© 2020

Lloyd's Register
Foundation

004230-004237-0177