

# Lloyd's Register of Shipping.

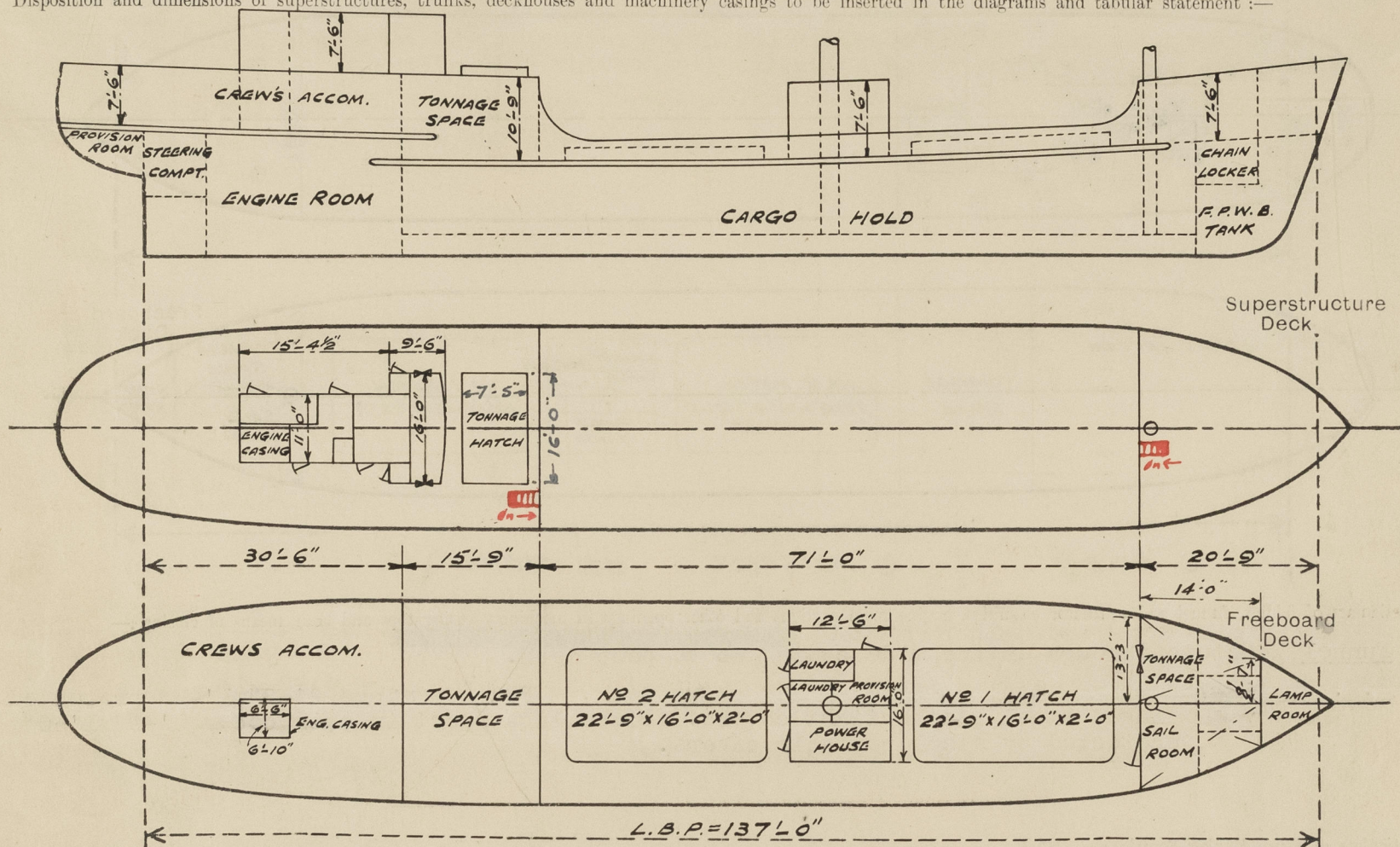
## SURVEYS FOR FREEBOARD.

### (CONDITIONS OF ASSIGNMENT.)

 Index No. \_\_\_\_\_  
 (For London Office only.)

Ship's Name "IAN CROUCH" Cheoy Lee Shipyard No.669 Port of Survey HONG KONG.  
 Official Number \_\_\_\_\_ Surveyor's Signature James A. Anderson  
 Nationality and Port of Registry Australian - Port Adelaide. Date of Survey 9th January, 1958.

Disposition and dimensions of superstructures, trunks, deckhouses and machinery casings to be inserted in the diagrams and tabular statement:—



Particulars of Superstructures, Trunks, Casings, Deckhouses.

	Coaming	Plating	Stiffeners	Spacing	End Attachments of Stiffeners	Size of Openings	Height of Sills	Height of Casings
Poop Bulkhead ...		1/4	Inv. Angles 3" x 2 1/2" x 1/4"	2'-6"	Welded Top & Bot.	-	-	7'-6"
Raised Quarter Deck Bulkhead ...		1/4	Inv. Angles 3" x 2 1/2" x 1/4"	2'-6"	Welded Top & Bot.	-	-	3'-3"
Bridge, After Bulkhead ...								
Bridge, Forward Bulkhead ...								
Forecastle Bulkhead ...		1/4	Inv. Angles 2 1/2" x 2" x 1/4"	2'-6" max.	Welded Top & Bot.	4'-0" x 5'-0" / 4'-0" x 3'-6"	21" / 24"	7'-6"
Trunk, Aft ...								
Trunk, Forward ...								
Exposed Machinery Casings on Freeboard or Raised Quarter Decks ...								
Exposed Machinery Casings on Superstructure Decks ...		1/4	Inv. Angles 2 1/2" x 2" x 1/4"	2'-2"	Brackets Top Welded Bot.	5'-0" x 2'-0"	18"	7'-3"
Machinery Casings within Superstructures not fitted with Class Closing Appliances ...		3/16	Inv. Angles 2 1/2" x 2" x 1/4"	2'-2" Max.	-			7'-6"
Deckhouses on Flush Deck Ships ...								

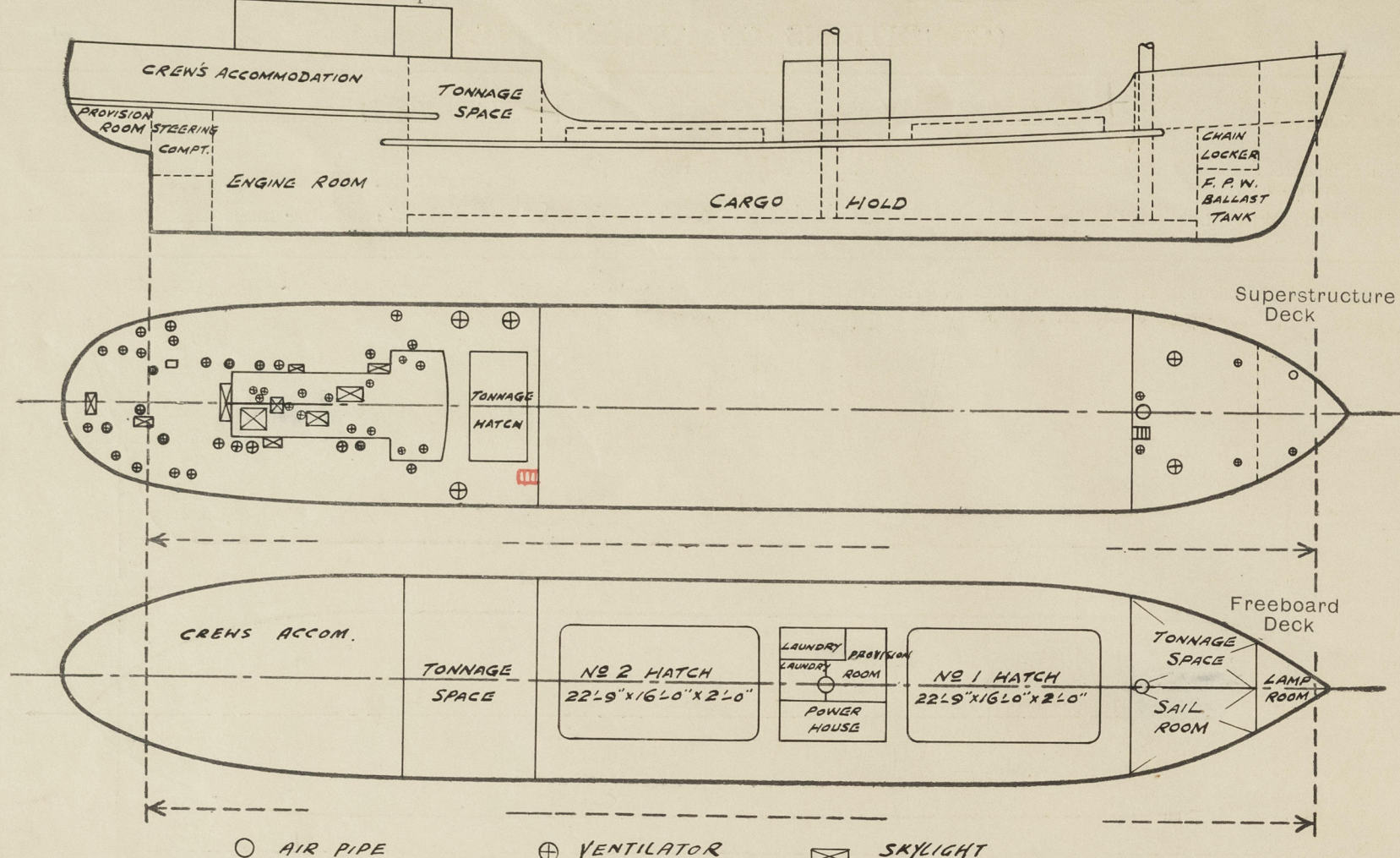
Particulars of Closing Appliances (state if capable of being manipulated from both sides).

Poop Bulkhead ...	No openings.
Raised Quarter Deck Bulkhead ...	No openings.
Bridge, After Bulkhead ...	
Bridge, Forward Bulkhead ...	
Forecastle Bulkhead ...	Tonnage Space - Storm boards, 2 1/2", in channels.
Exposed Machinery Casings on Freeboard or Raised Quarter Decks ...	Hinged steel weathertight doors capable of being operated from both sides.
Exposed Machinery Casings on Superstructure Decks ...	Hinged hardwood doors, 2", strongly framed and capable of being operated from both sides.
Machinery Casings within Superstructures not fitted with Class Closing Appliances ...	No openings.
Deckhouses on Flush Deck Ships ...	



# PARTICULARS OF PROTECTION TO OPENINGS, ETC.

The following diagrams should be used to indicate the positions of cargo and coaling hatchways, gangway, cargo and coaling ports, ventilators, companionways, etc., which would affect the seaworthiness of the ship :-



Particulars of fiddle, funnel and ventilator coamings, engine room skylight and other openings in machinery casing tops and their means of closing :-

22x12 1/2 strongly constructed of steel. Funnel opening through engine side casing above poop deck. Height of funnel 14' - 14' 6" skirting. E.R. Skylight coaming steel 5'-0"x4'-0"x8" above deck. Four openings 2'-2"x1'-8" protected by hinged steel weathertight covers. Fixed light port in each cover 1'-6"x1'-0" protected by steel portable covers.

Particulars of Flush Bunker Scuttles :- Nil.

Particulars of Skylight Poop Deck Two 1p 1s coaming steel 1'-6"x1'-2"x1'-6" high opening 13"x11 1/2" } All skylight openings fitted with hinged steel weathertight covers & where fixed light ports portable steel plates. One port coaming steel 3'-2"x1'-3"x1'-6" high two openings 15 1/2"x12" One port coaming steel 1'-4"x1'-0"x1'-6" high opening 1'-4"x1'-0" One std. coaming steel 3'-4"x1'-3"x1'-6" high opening 1'-6"x1'-0" & 12 1/2"x12" One port coaming steel 2'-6"x1'-6"x1'-6" high opening 1'-3"x1'-2" Two coaming steel 1'-0"x1'-6"x6" high openings 1'-5"x1'-2" One coaming steel 2'-6"x1'-2 1/2"x6" high openings 2'-1"x9 1/2"

Particulars of Companionways :- Poop House Rainway leading to poop accommodation situated within poop deckhouse. Outside doors 2" handwood 4' 1/2" - 18" gills. Inside doors wood 2 1/2" high.

Particulars of Ventilators in exposed positions on freeboard and superstructure decks :-

Forecastle Deck One (Std) 6" dia. x .30 gooseneck type opening 3'-1" above deck. Stayed to deck. Four (1p 3s) coamings 6" dia. x .30 x 36" above deck. Two (1s 1s) coamings 13 1/2" dia. x 3/8" x 36" above deck.

Poop Deck Three (2p 1s) coamings 13 1/2" dia. x .36 x 30" above deck. Two (1p 1s) coamings 9" dia. x .33 x 30" above deck. Twenty-six (13p 13s) coamings 6" dia. x .30 x 30" above deck. Two around galley & boiler, funnels 10" dia. x .34 x 30" above deck.

Midship House Five (3p 2s) coamings 6" dia. x .30 x 30" above deck.

House on Poop Twelve mushroom-vents. 6" dia. x 8" high fitted with screw down watertight covers. Two mushroom vents. 4" dia. x 6" high fitted with screw down watertight covers.

On Main Hatch covers. 4 off (2 fwd 2 aft) mushroom type, coamings 6" dia x 8" high, steel screwed w.t. covers. All ordinary coamings fitted with wood plugs and canvas covers.

Particulars of Air Pipes in exposed positions on freeboard, raised quarter, or superstructure decks :-

Forecastle Deck One port, to fore peak tank, 6" dia. opg. 37" above deck. Stayed to deck.

Poop Deck Two 1p 1s to main oil tanks 3 1/2" dia. opg. 22" above deck. Three 1p 2s to F.W. and After Peak tanks 3" dia. opg. 25" above deck.

All pipes to water tanks fitted with wood plugs and canvas covers. All pipes to oil tanks fitted with gauze wire and canvas covers.

Particulars of Gangway Cargo and Coaling Ports :- Nil.

Particulars of Scuppers and Sanitary Discharge Pipes :-

Forward and after tonnage spaces drained by 5" dia. SDNR valves fitted with extension spindles and indicators. Forecastle drained by 2" dia. scupper through shell fitted with SDNR valve with extension spindle to deck and indicator. Deckhouse drained by 4" & 2" dia. scuppers through shell P & S fitted with automatic valves. Upper deck drained by 4" dia. scuppers 1 p., 1 s., through shell. Poop Space drained by 2" scuppers 1 p., 1 s., through shell fitted with SDNR valves with extension spindles to deck and indicators. W.Cs, Wash Basins etc. Five 4" dia. Seven 2 1/2" dia. and one 2" dia. scuppers through shell fitted with SDNR valves with extension spindles to deck and indicators.

All valves and chests bronze.

Particulars of Side Scuttles :-

In Poop Ten 15" dia. four 11" dia. bronze frames and deadlights to B.S.S. requirements.

Vertical distance of Sill of lowest Side Scuttle above top of keel. No side scuttles below freeboard deck.

Particulars of Guard Rails :-

Poop & Forecastle Decks Three tier rails 3'-0" high stanchions 2 1/2" x 3/8" flat bars spaced 4'-2"

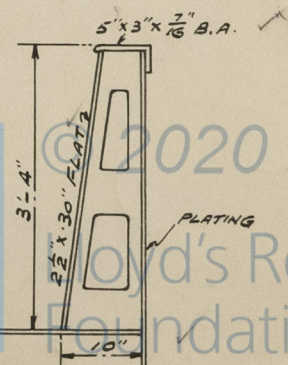
Particulars of Gangways, Lifelines, etc. :- Adequate materials and facilities on board.

## Particulars of Freeing Arrangements.

	Length of Bulwark	Height of Bulwark	Size of Freeing Ports	Number each side	Area each side	Rule area each side
After Well ...						
Forward Well ...	70'-0"	3'-4"	3 @ 3'-0" x 1'-0" 1 @ 3'-6" x 9" 1 @ 4'-7 1/2" x 9"	5	14.20 Sq.Ft.	14.0 Sq.Ft.

State position of each freeing port from F. clew Bulkhead to Bulkhead. Forward Well :- 2'-9" -- 28'-0" x 46'-0" -- 62'-3" -- 66'-9"

State whether the freeing ports are fitted with shutters, bars, or rails, and give particulars of such :- Shutters, bronze bushes and oiling arrgt. on 3'-0" ports marked



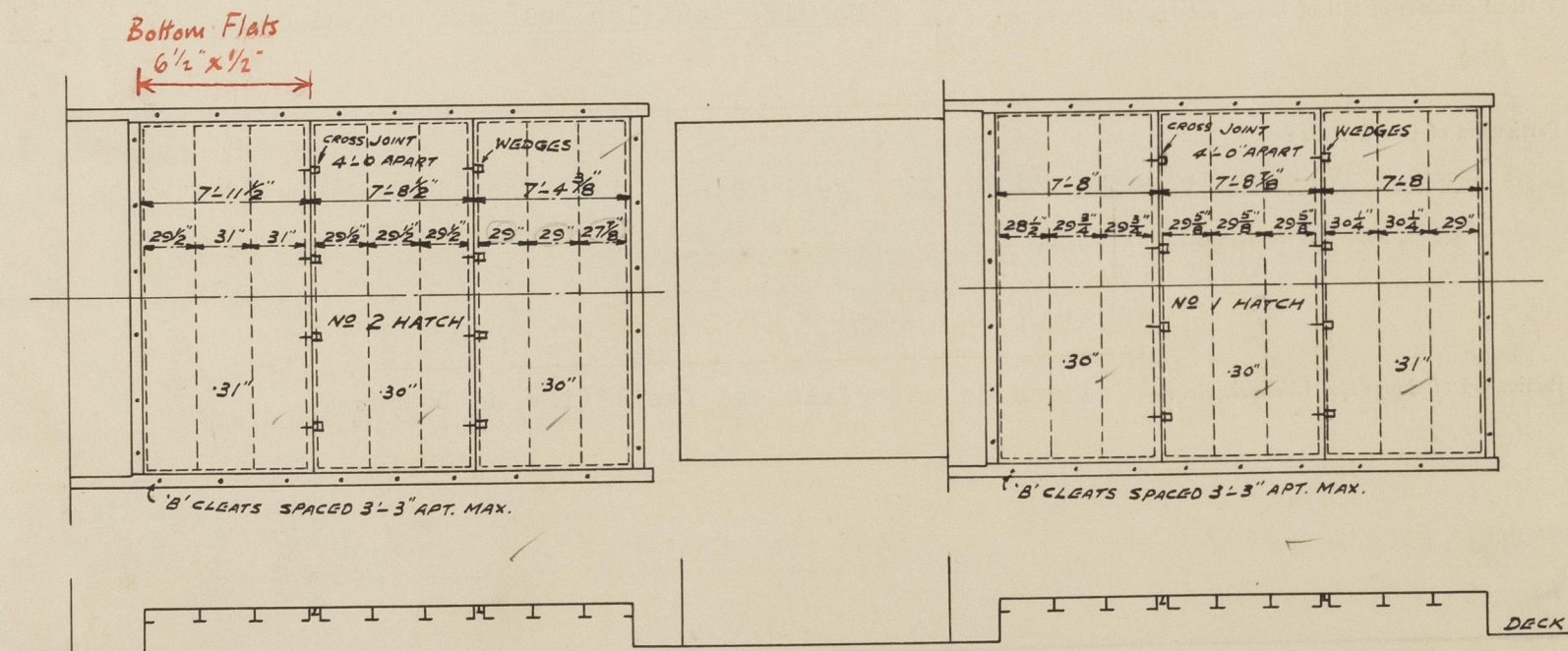


# PARTICULARS OF PROTECTION TO OPENINGS, ETC.

HATCHWAYS ON FREEBOARD AND SUPERSTRUCTURE DECKS.									
			Freeboard Deck		Poop Deck		Poop Space		
Description of Hatchway	...	...	Cargo	Cargo	Tonnage	Access		Access	
Dimensions of Hatchway	...	...	22'-9" x 16'-0"	22'-9" x 16'-0"	16'-0" x 7'-5"	1'-4" x 1'-0"		1'-8" x 1'-4"	
COAMINGS	Height above Deck	...	2'-0"	2'-0"	9"	18"		3"	
	Thickness	{ Sides	.40	.40	.375	.375		.375	
		{ Ends	.40	.40	.375	.375		.375	
	Stiffeners	...	6"x3"x7/16 I.A.		-	-		-	
	Brackets, <del>etc.</del>	...	9"x.30 spaced 8'-9"		-	-		-	
HATCH BEAMS	Number	...							
	Spacing	...							
	Scantling and Sketch	...							
	Bearing Surface	...							
FORE AND AFTERS	Number	...							
	Spacing	...							
	Unsupported Lengths	...							
	Scantling* and Sketch	...							
HATCH COVERS	Material	...	MacGregor	MacGregor	O.P.	Steel		Steel	
	Thickness	...	Type	Type	3/8"	1/2"		hinged	
	How fitted	...	see	see	Fore & Aft	Water		weather	
	Bearing Surface	...	Sketch	Sketch.	3"	Tight		tight.	
Spacing of Cleats	...	...	39" max.		Nil	6 x 5/8			
Number of Tarpaulins	...	...			Two	eye bolts & toggles.			

\*Are wood ~~lower~~ *lower* steel shod at all bearing surfaces? *Yes.*  
 Are battens and wedges efficient and in good condition?  
 Are tarpaulins in good condition and in accordance with rule requirements? *Yes.*  
 Are lashings provided in accordance with rule requirements? *Not required.* *Tonnage hatch covers secured by hemp lashings.*

Particulars of any special features:—



© 2020

Lloyd's Register Foundation