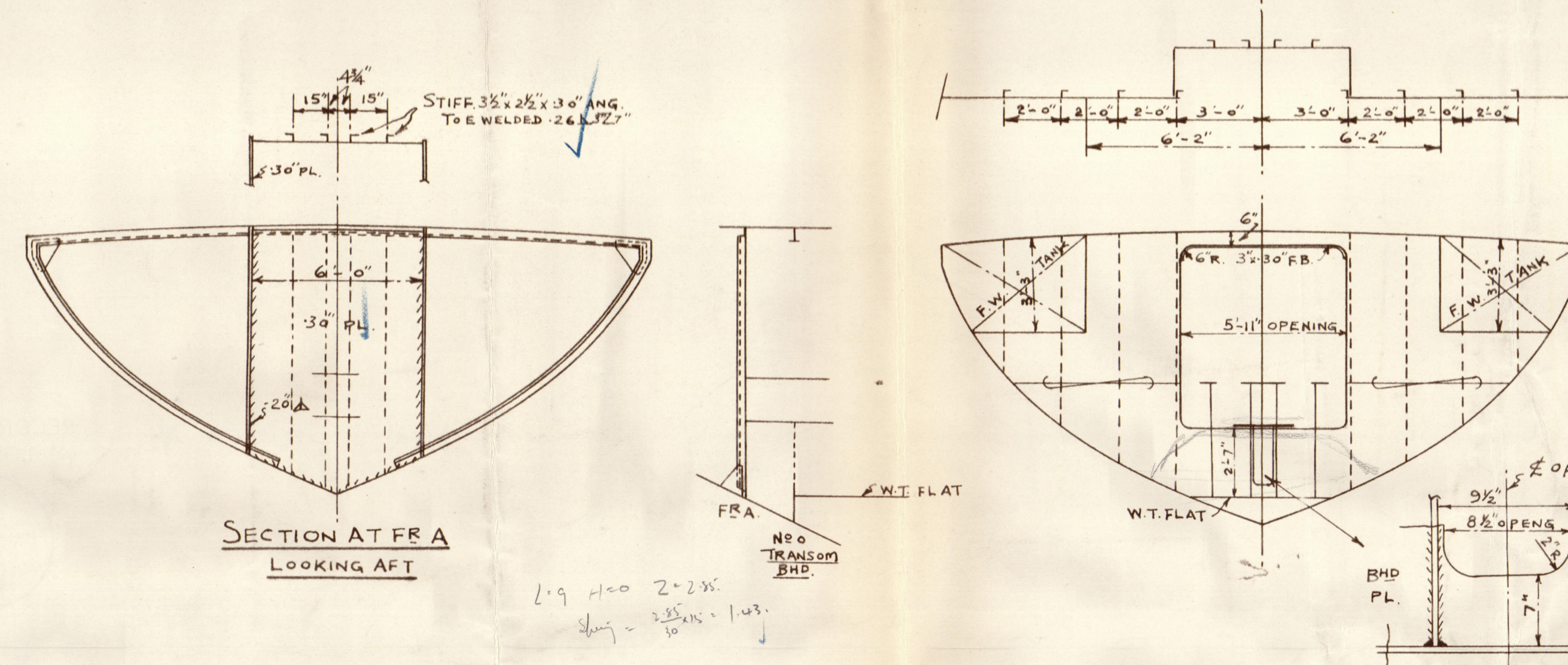


SHIP NO. 669 AUXILIARY SCHOONER  
STERN FRAME & RUDDER DETAILS

SCALE AS SHOWN

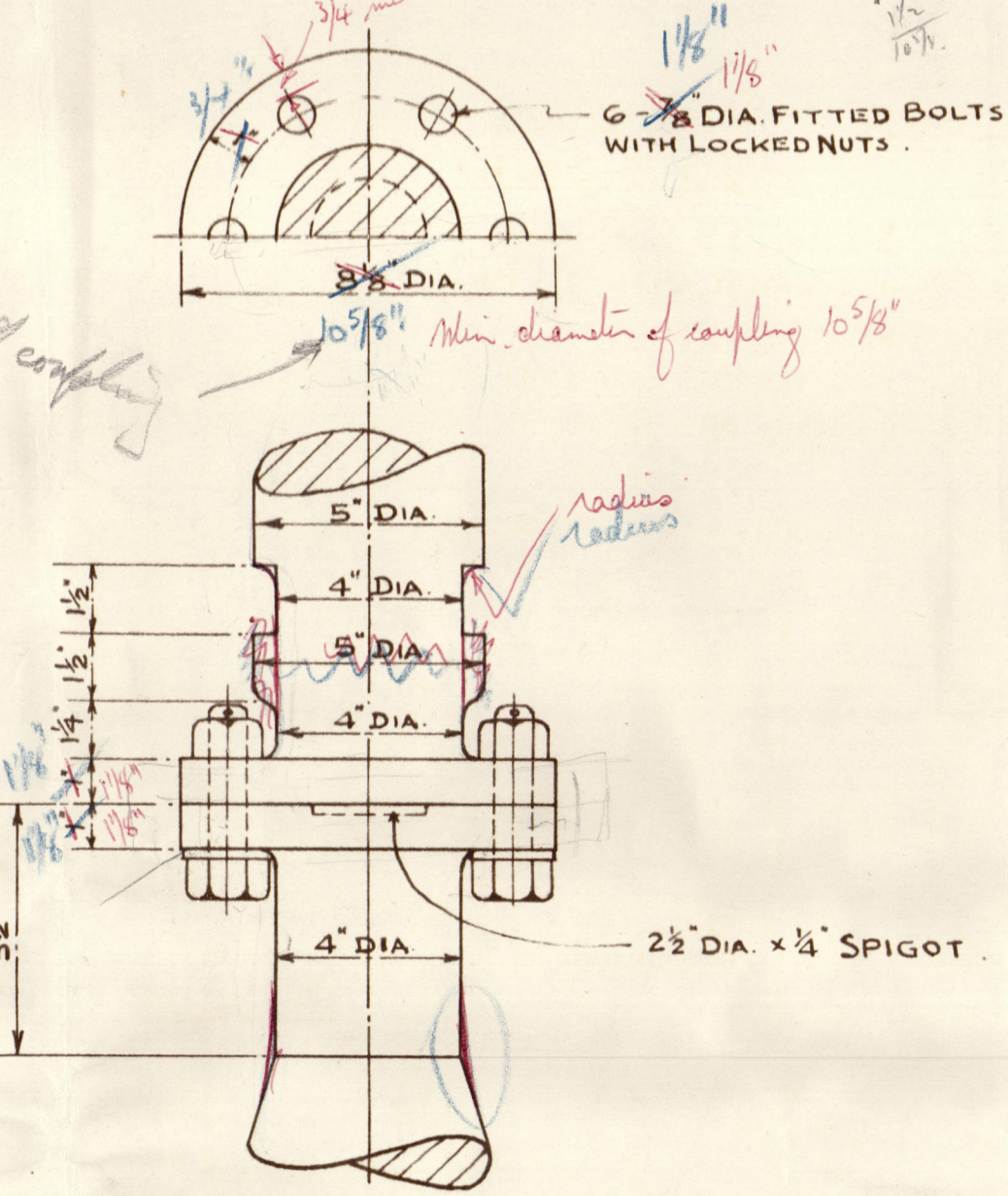
WELDING MARKS	
MARKED	DESCRIPTION
	CONTINUOUS FILLET BOTH SIDES
	CONTINUOUS FILLET ONE SIDE
	V-TYPE WELDING
	INTERMITTENT FILLET STAGGERED
	G = LENGTH OF FILLET, D = SPACING OF FILLET CR TO CR



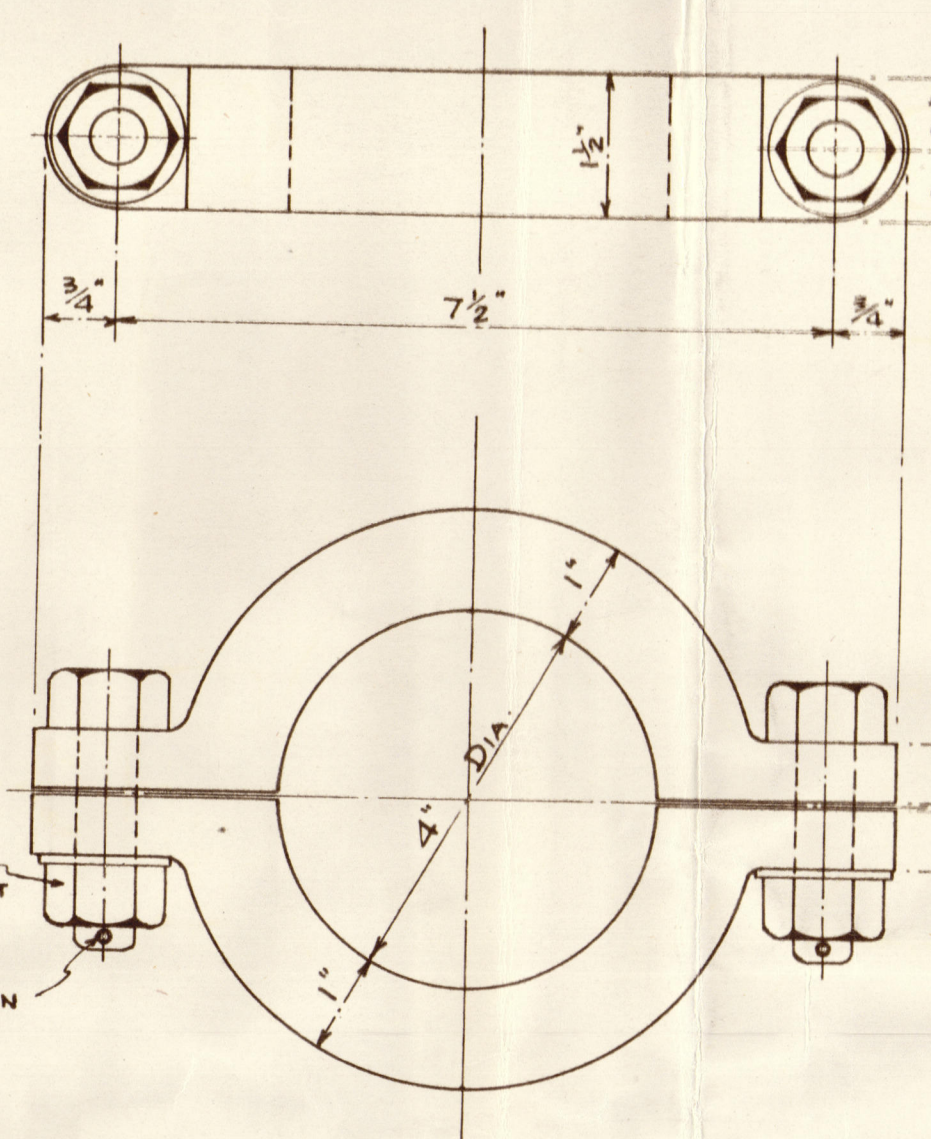
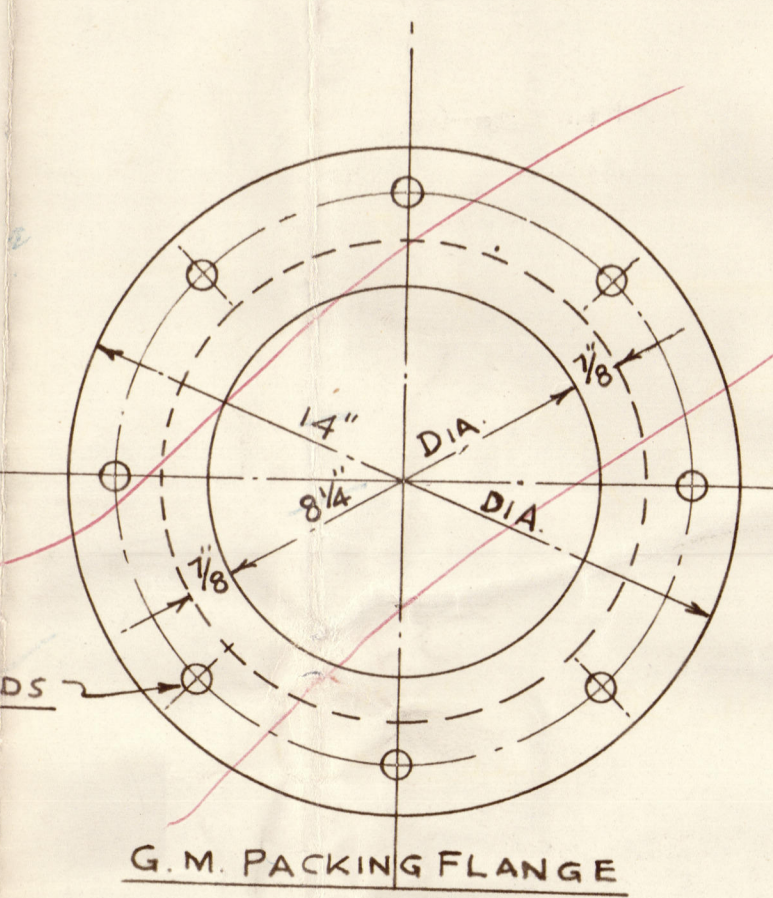
AUXILIARY STEERING ARRANGEMENTS INCLUDING TACKLES ETC. SEE SEPARATE DRAWING.

SECTION AT NO O TRANSOM BMD SHOWING OPENING FOR HYD STEER GEAR

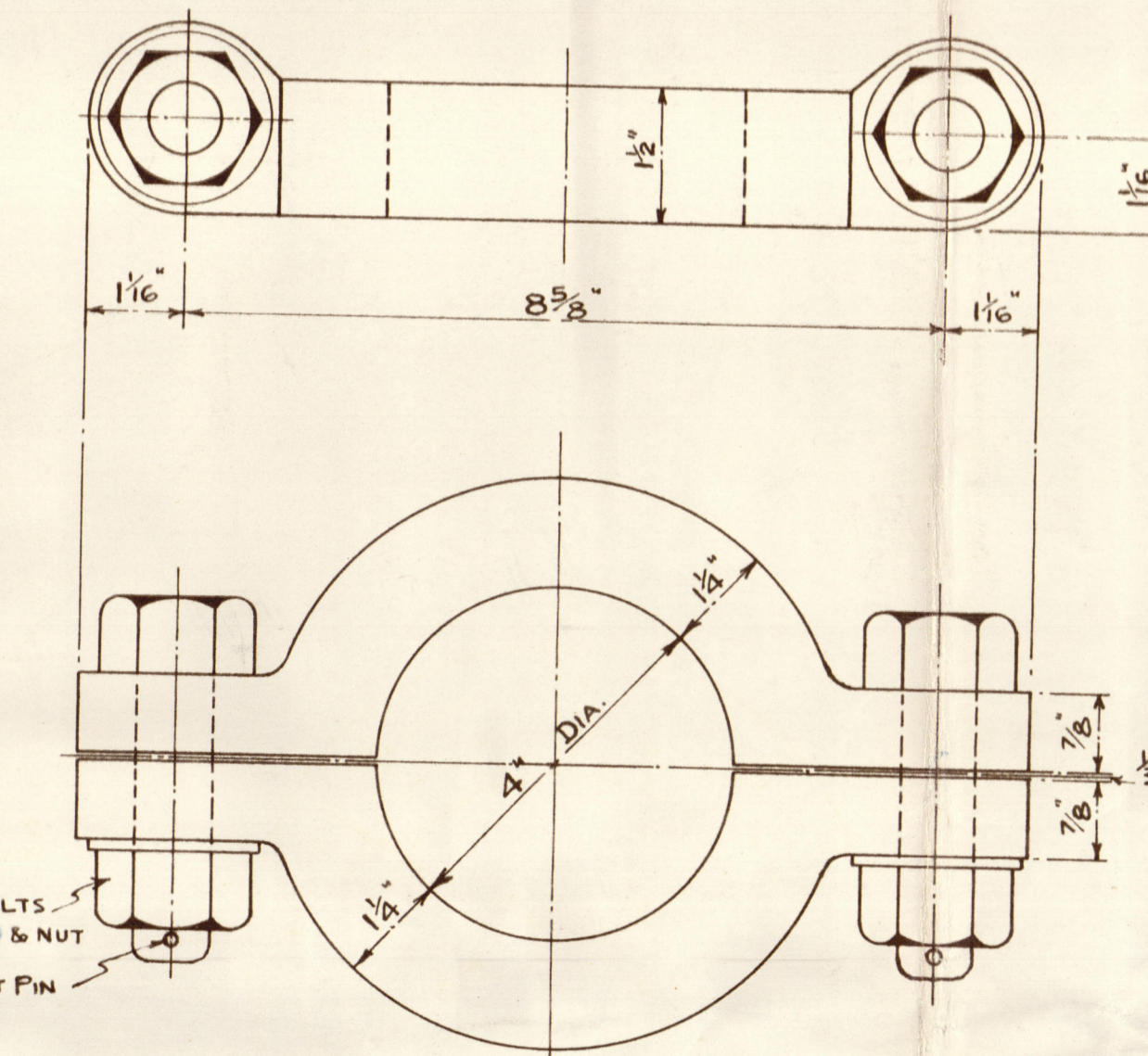
NOTE:-  
ESTIMATED SPEED OF SHIP = 9 1/2 KNOTS  
AREA OF RUDDER = 25.5 Sq Ft  
RUDDER FILLED WITH SLAB CORK.  
THE STEELWORK INSIDE THE RUDDER IS TO BE THICKLY COATED WITH BITUMINOUS ENAMEL. THE OUTSIDE OF THE RUDDER IS TO BE COATED WITH THREE COATS OF APEXIOR NO 3.



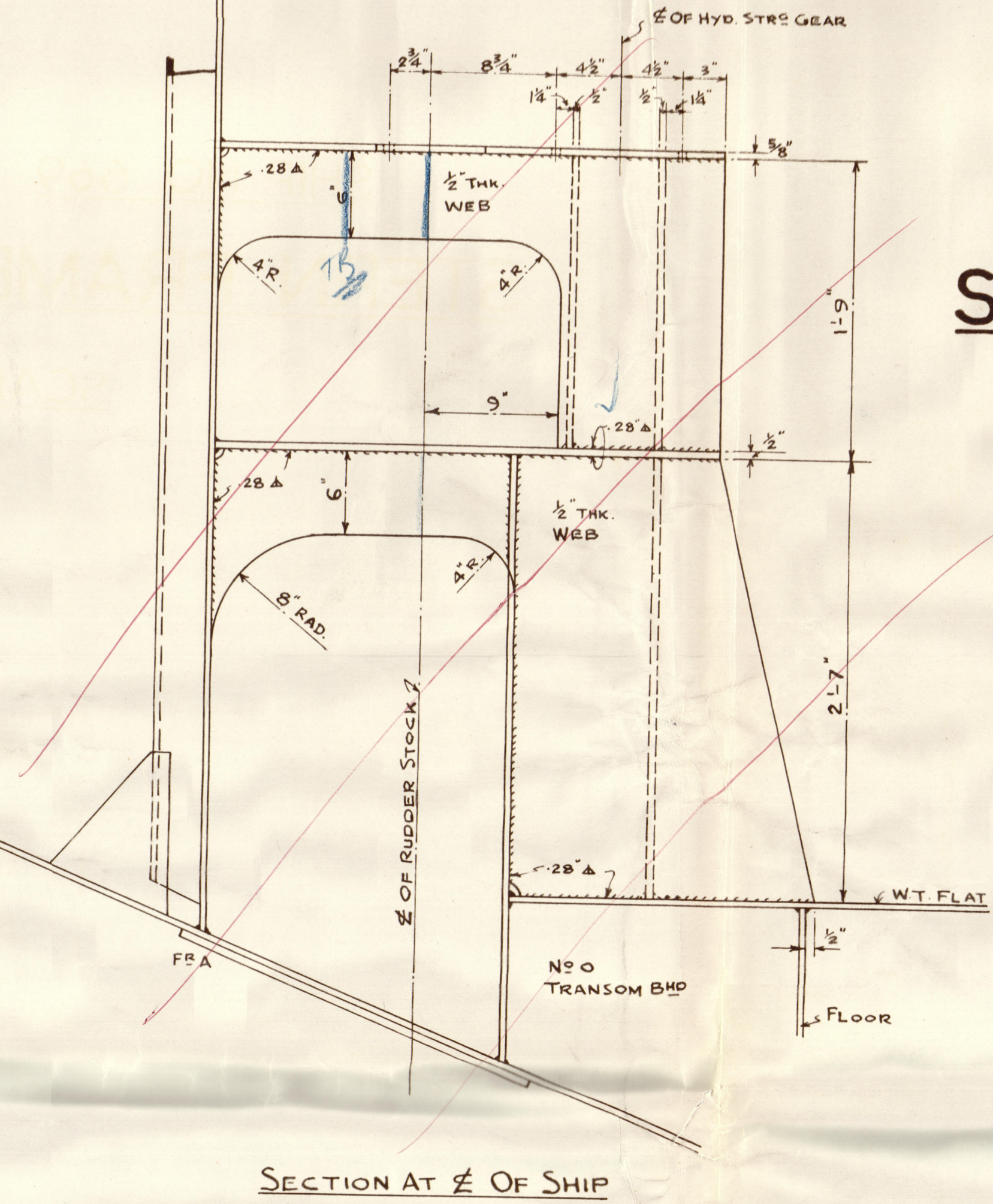
DETAIL OF COUPLING SCALE - 3" = 1'-0"



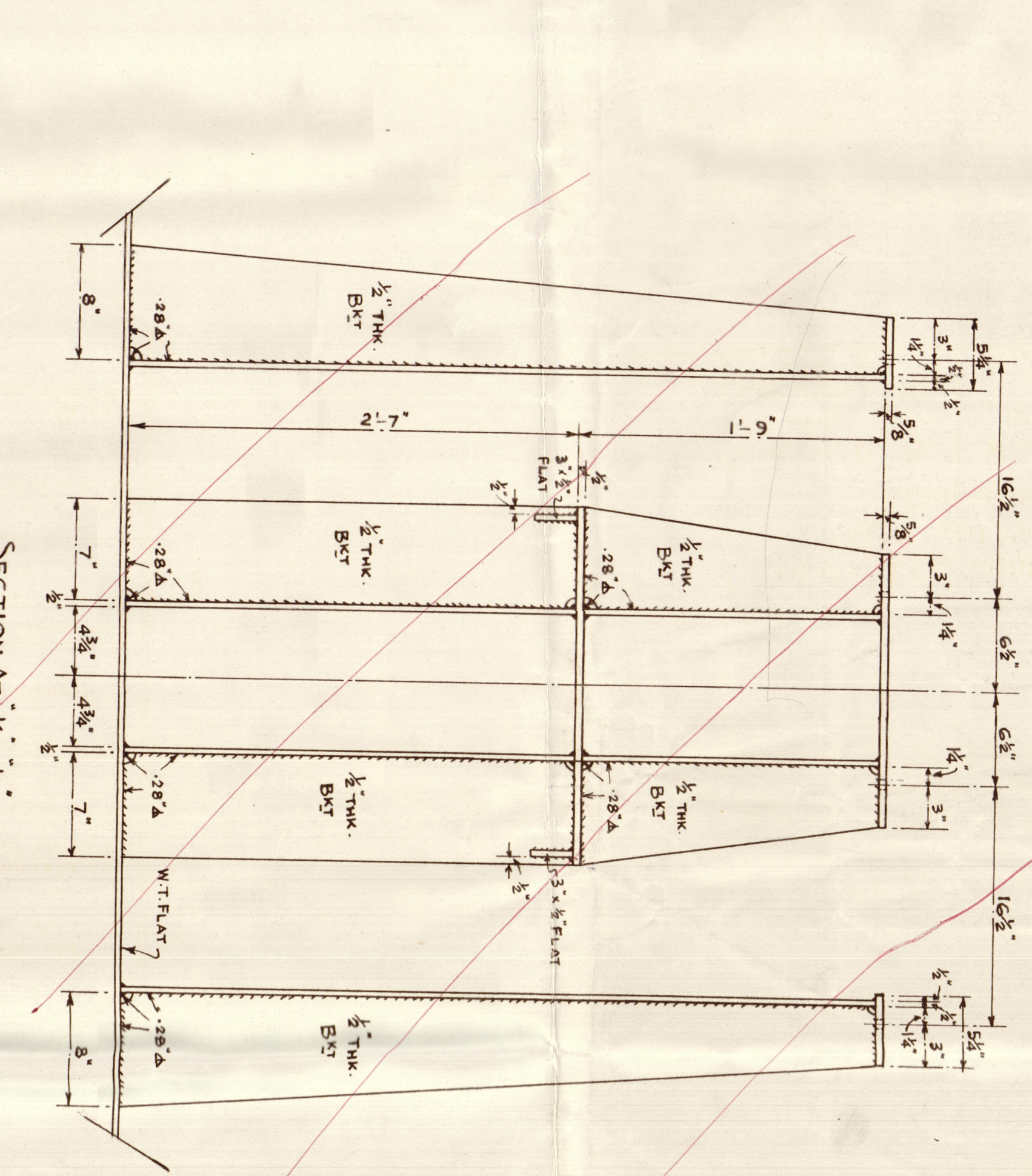
DETAIL OF C.S. SPLIT CLAMP SCALE - HALF FULL SIZE



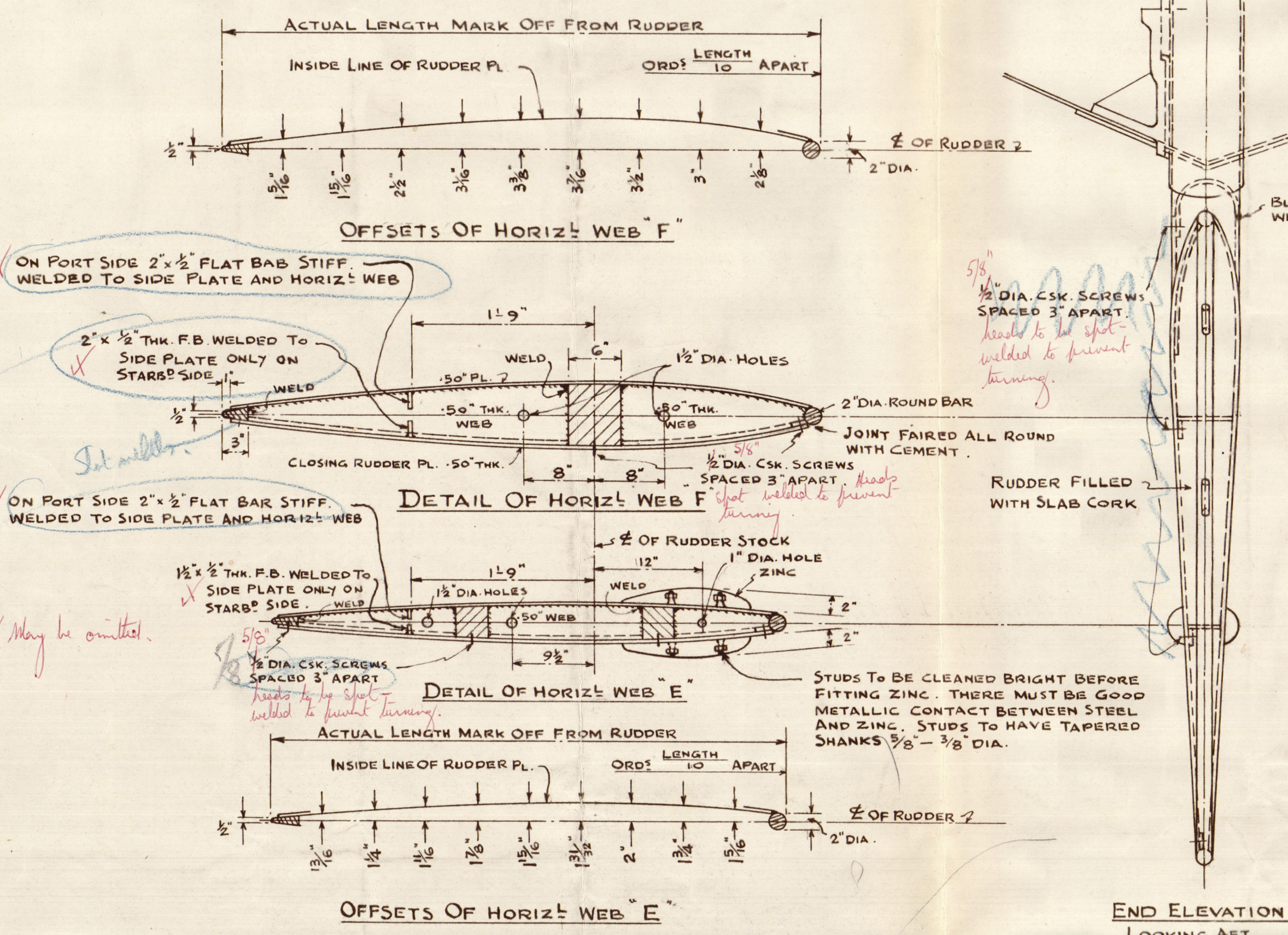
DETAIL OF C.S. RUDDER CARRIER FITTING SCALE - HALF FULL SIZE



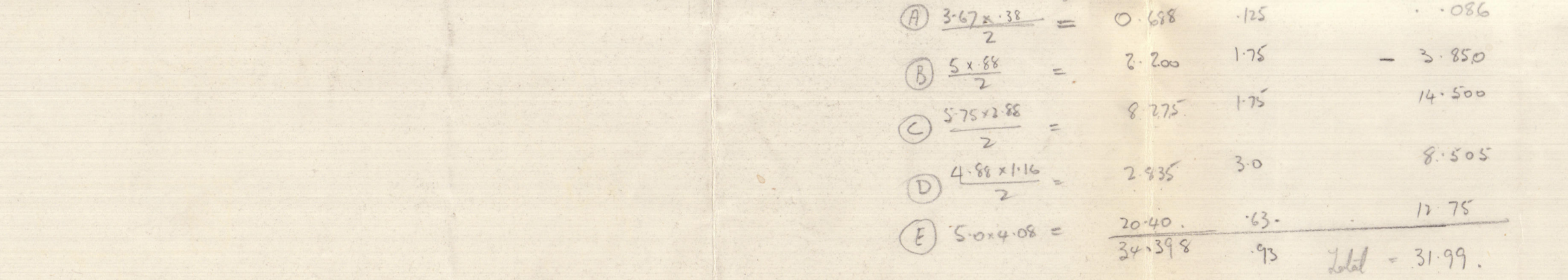
SECTION AT E OF SHIP



DETAIL OF SEATING FOR HYD STEER GEAR & RUDDER CARRIER SCALE - 1/2" = 1'-0"



DETAIL OF HORIZ WEB F

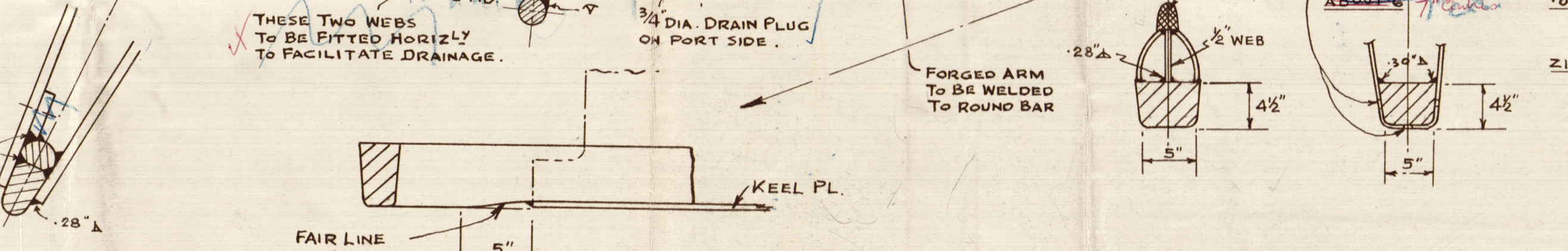


DETAIL OF HORIZ WEB E

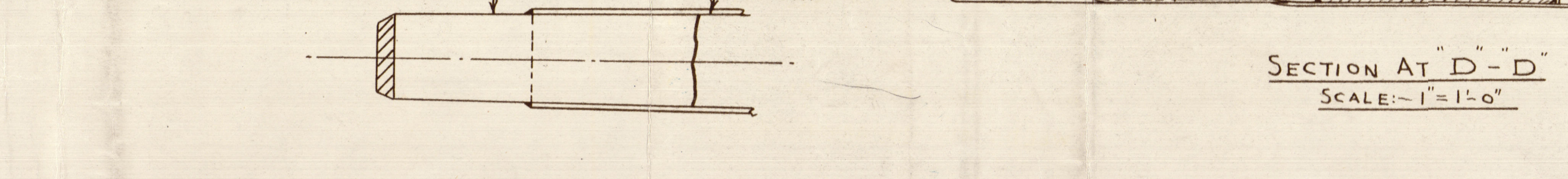
① 3.02 x 11 = 33.22	② 3.02 x 11 = 33.22	③ 3.02 x 11 = 33.22	④ 3.02 x 11 = 33.22	⑤ 3.02 x 11 = 33.22
⑥ 3.02 x 11 = 33.22	⑦ 3.02 x 11 = 33.22	⑧ 3.02 x 11 = 33.22	⑨ 3.02 x 11 = 33.22	⑩ 3.02 x 11 = 33.22
⑪ 3.02 x 11 = 33.22	⑫ 3.02 x 11 = 33.22	⑬ 3.02 x 11 = 33.22	⑭ 3.02 x 11 = 33.22	⑮ 3.02 x 11 = 33.22
⑯ 3.02 x 11 = 33.22	⑰ 3.02 x 11 = 33.22	⑱ 3.02 x 11 = 33.22	⑲ 3.02 x 11 = 33.22	⑳ 3.02 x 11 = 33.22
㉑ 3.02 x 11 = 33.22	㉒ 3.02 x 11 = 33.22	㉓ 3.02 x 11 = 33.22	㉔ 3.02 x 11 = 33.22	㉕ 3.02 x 11 = 33.22



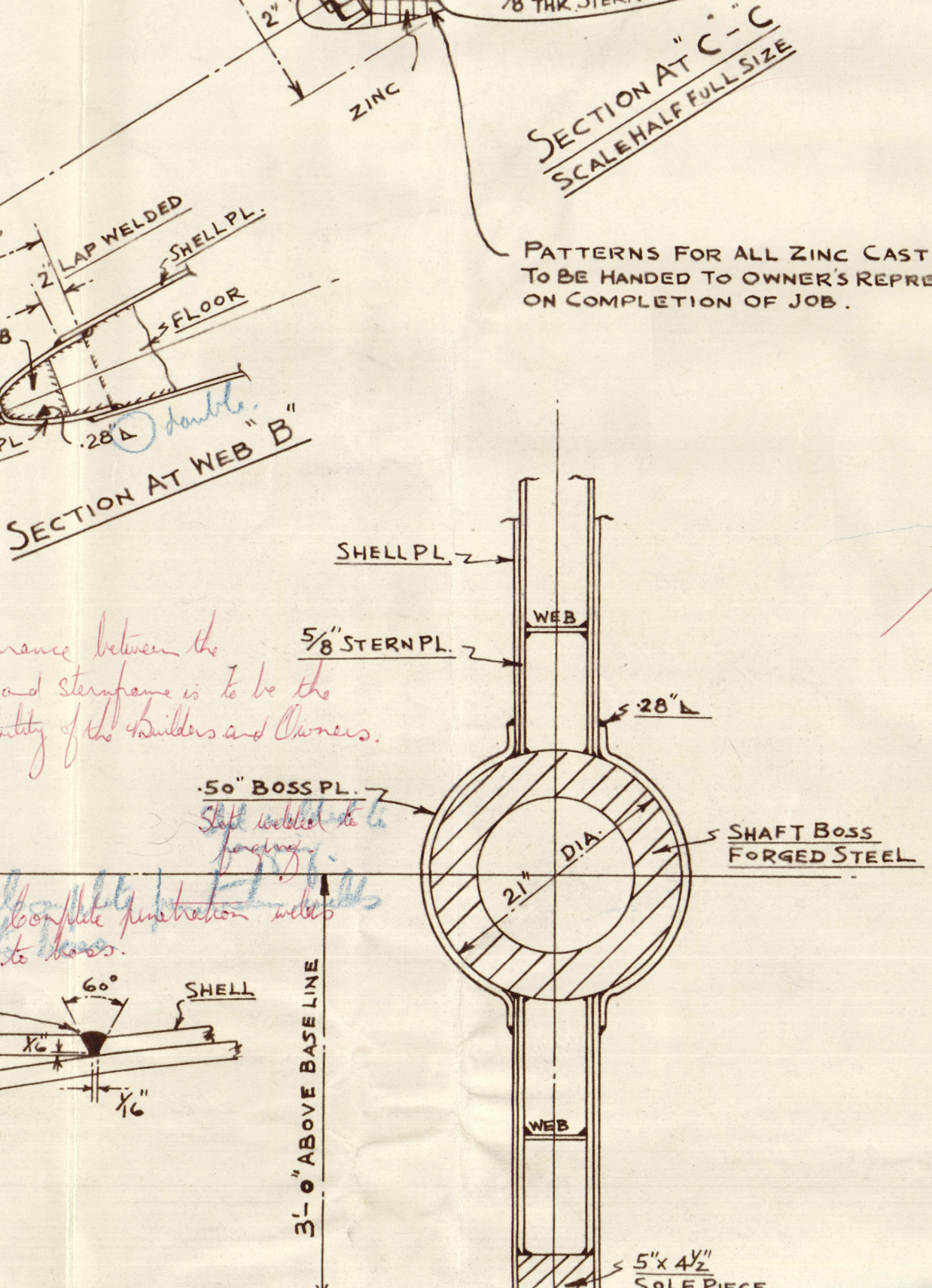
DETAIL OF HORIZ WEB D



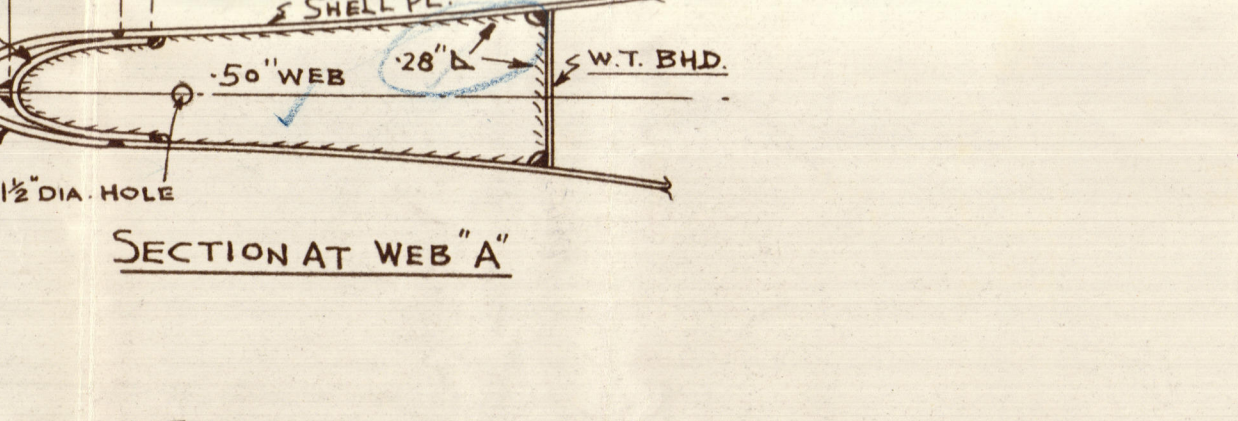
DETAIL OF HORIZ WEB C



DETAIL OF HORIZ WEB B



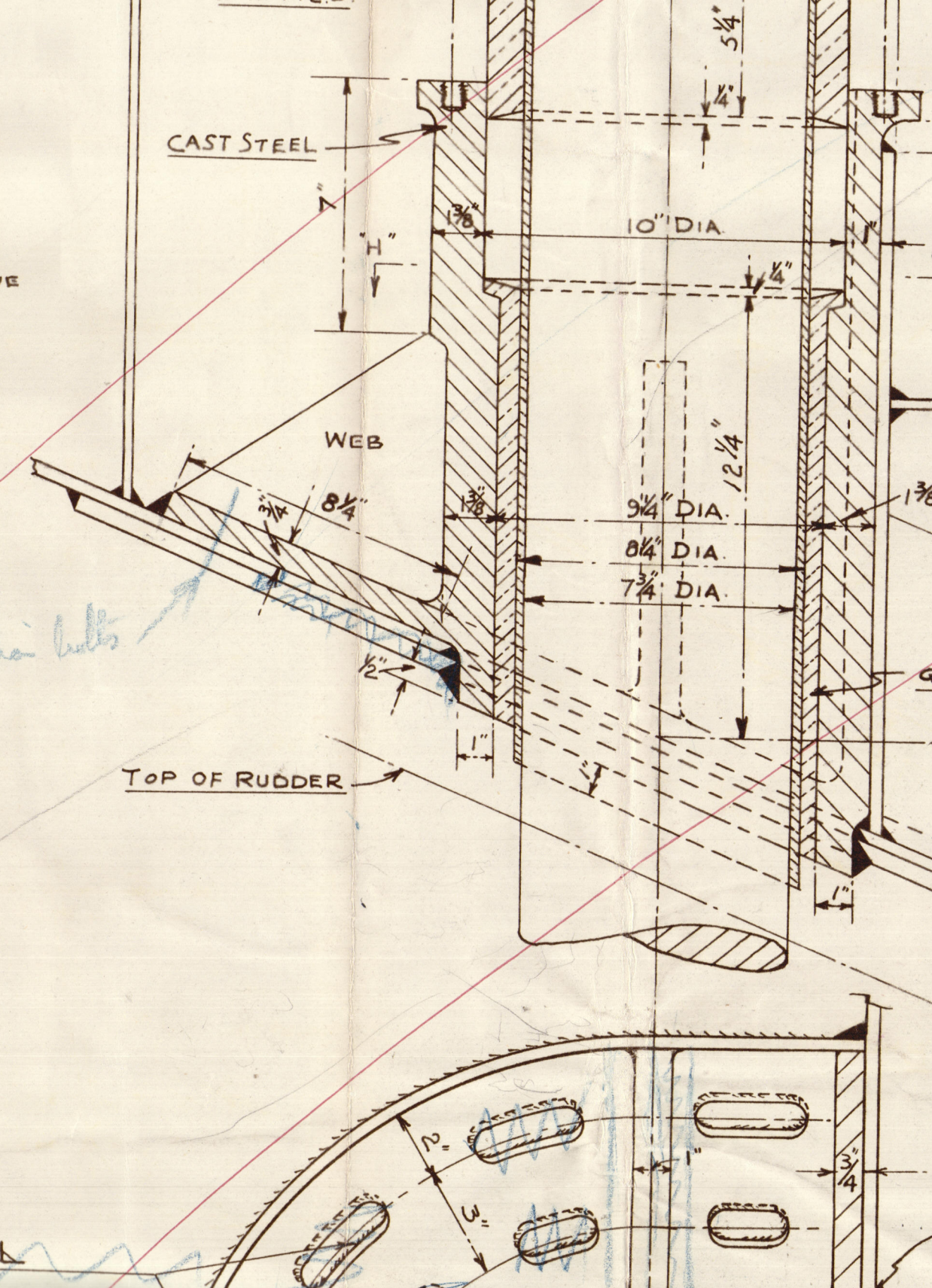
DETAIL OF FORGED STEEL RUDDER STOCK



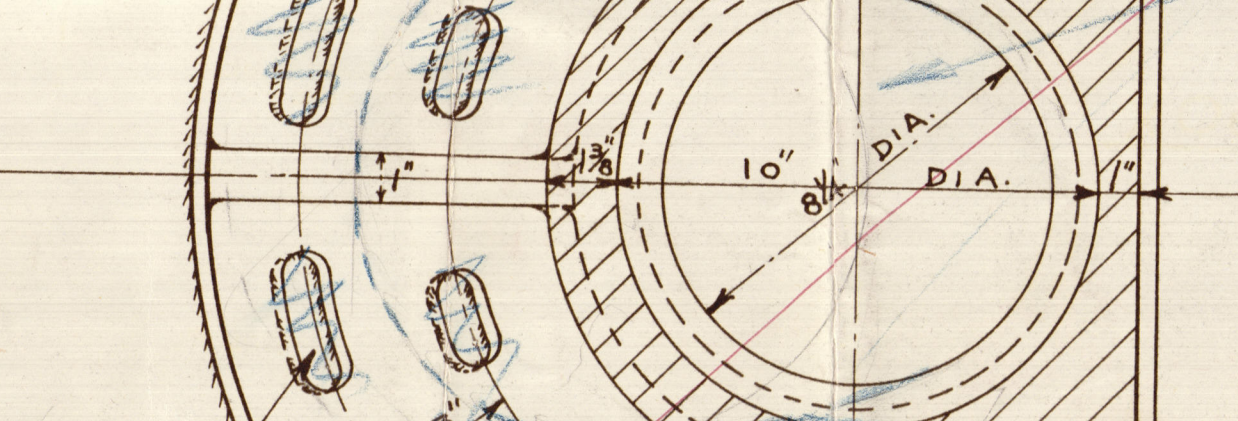
DETAIL OF FORGED STEEL RUDDER STOCK



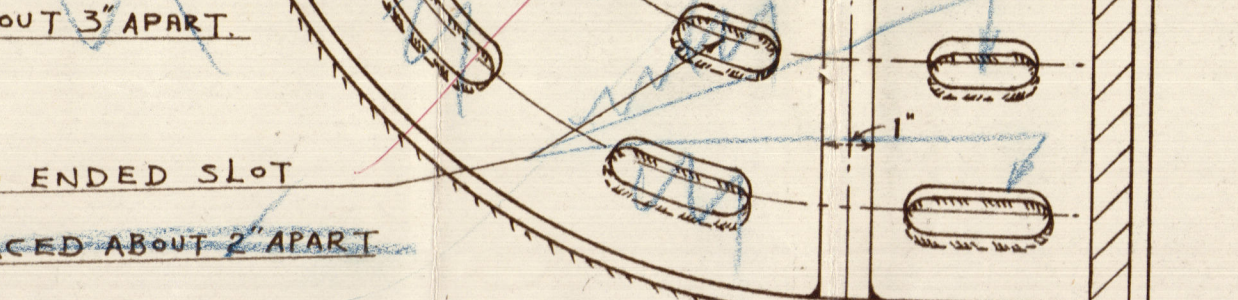
DETAIL OF FORGED STEEL RUDDER STOCK



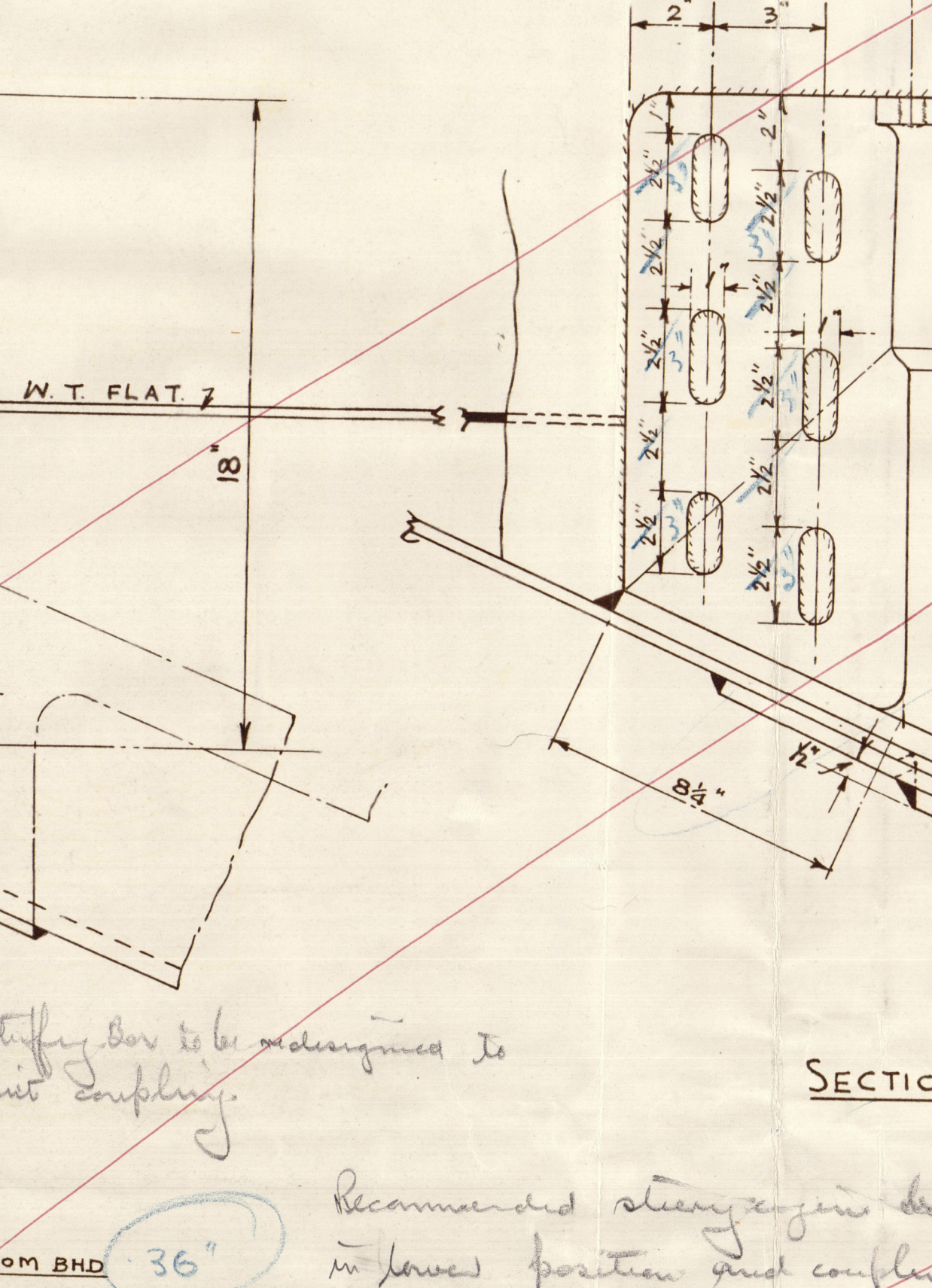
DETAIL OF FORGED STEEL RUDDER STOCK



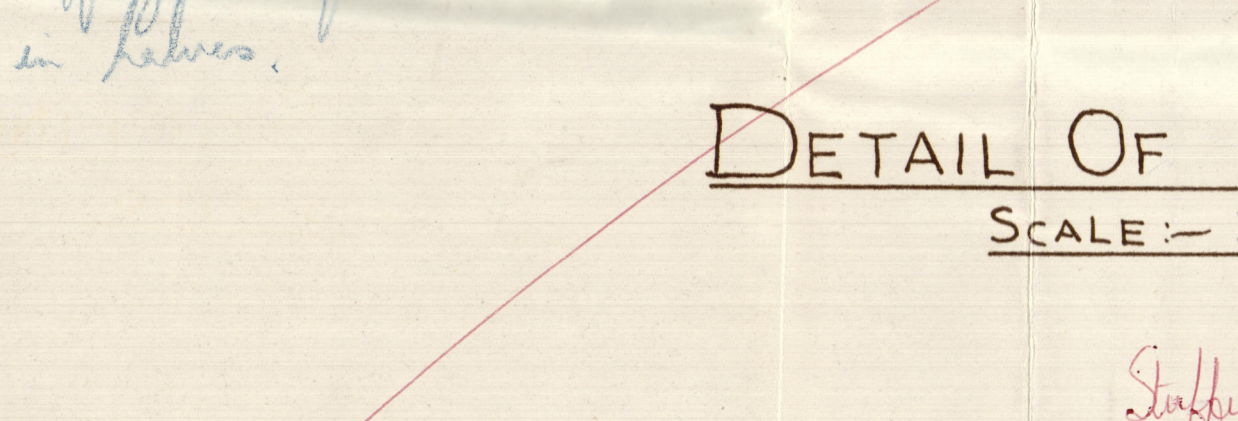
DETAIL OF FORGED STEEL RUDDER STOCK



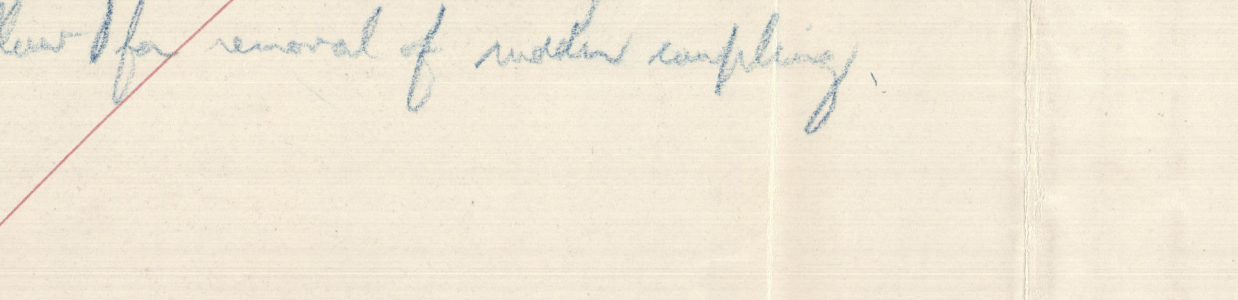
DETAIL OF FORGED STEEL RUDDER STOCK



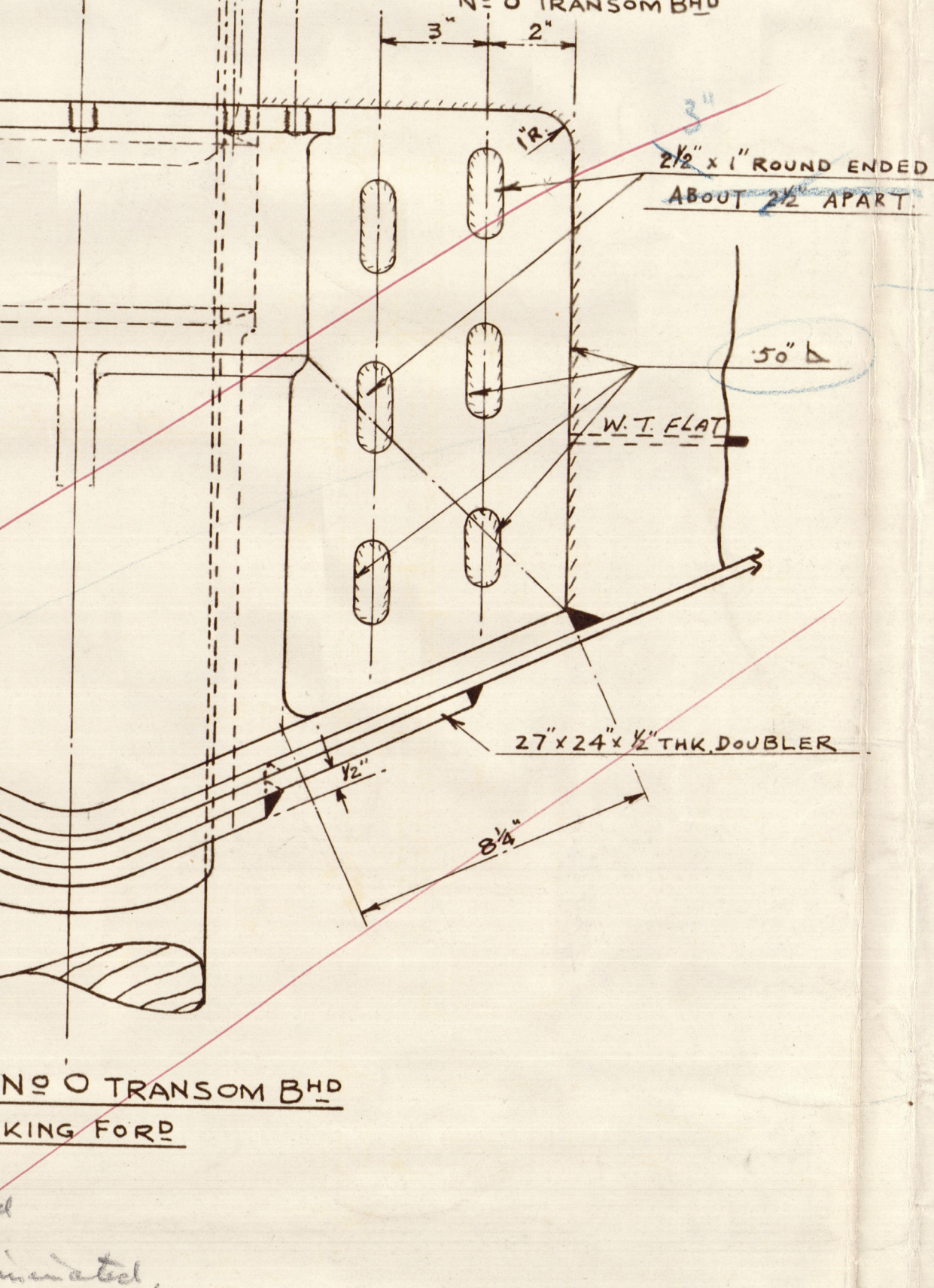
DETAIL OF FORGED STEEL RUDDER STOCK



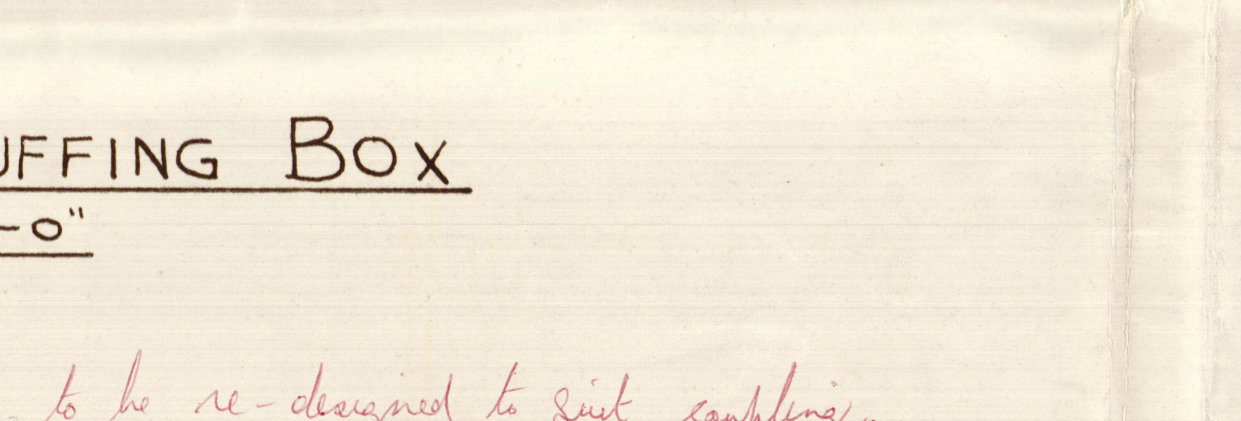
DETAIL OF FORGED STEEL RUDDER STOCK



DETAIL OF FORGED STEEL RUDDER STOCK



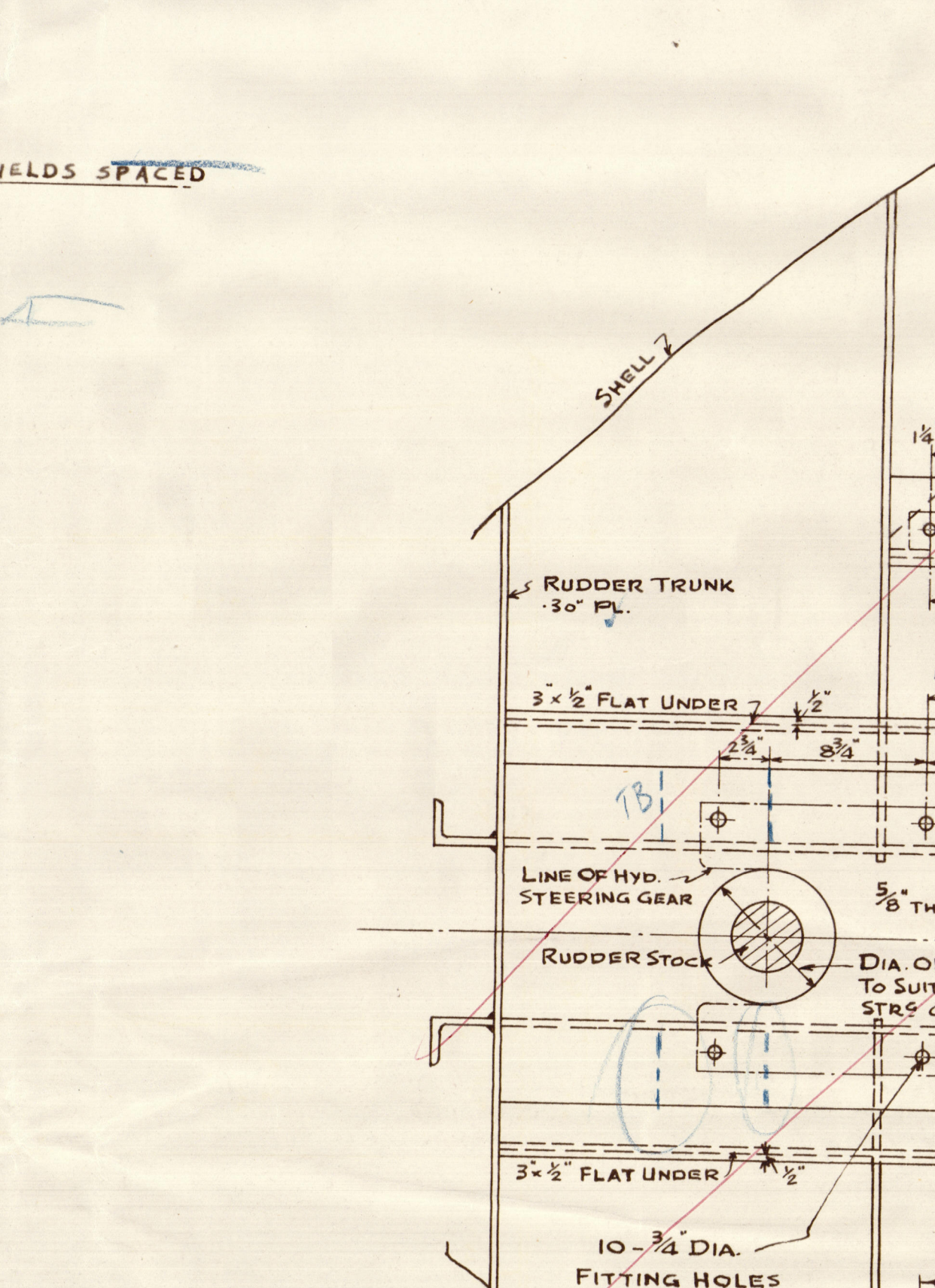
DETAIL OF FORGED STEEL RUDDER STOCK



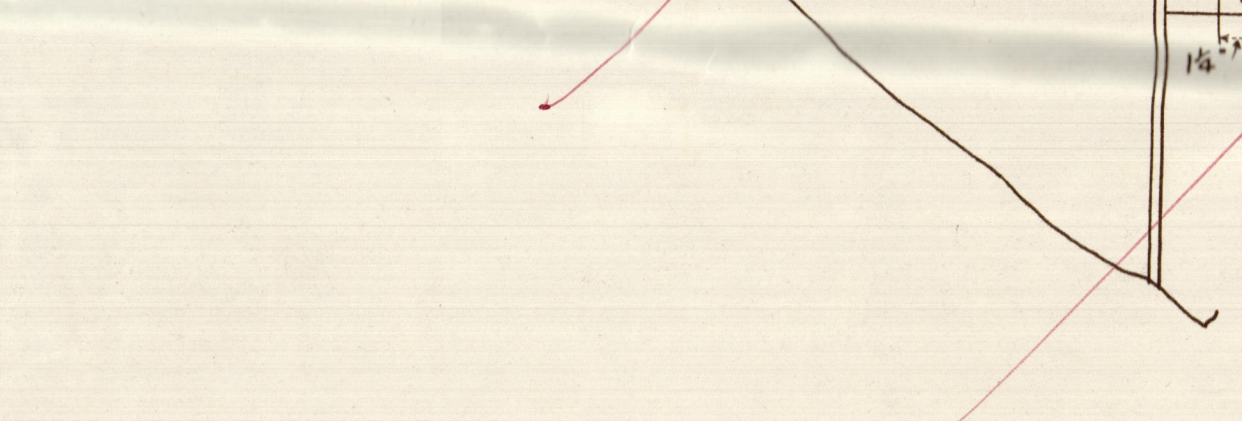
DETAIL OF FORGED STEEL RUDDER STOCK



DETAIL OF FORGED STEEL RUDDER STOCK



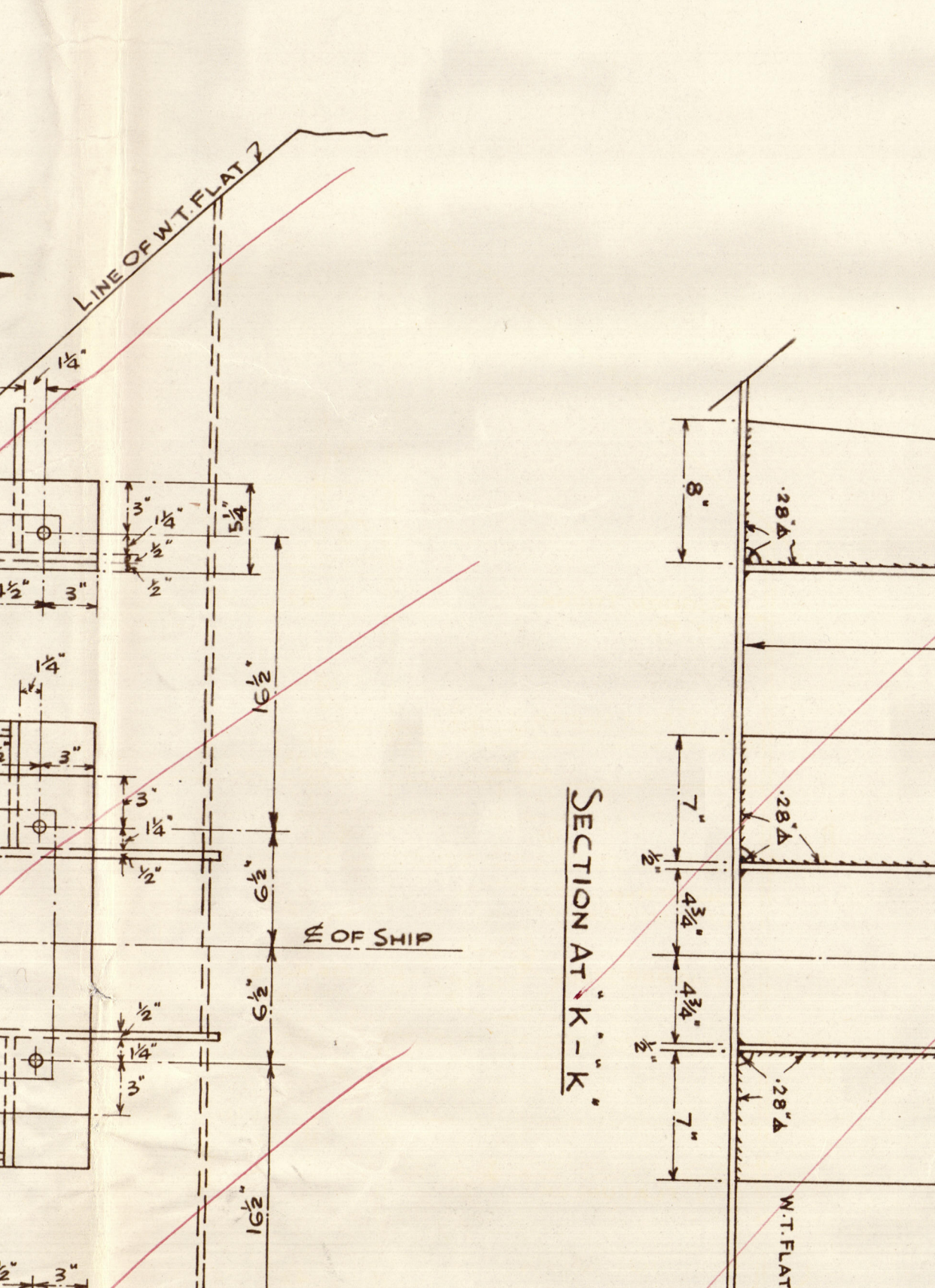
DETAIL OF FORGED STEEL RUDDER STOCK



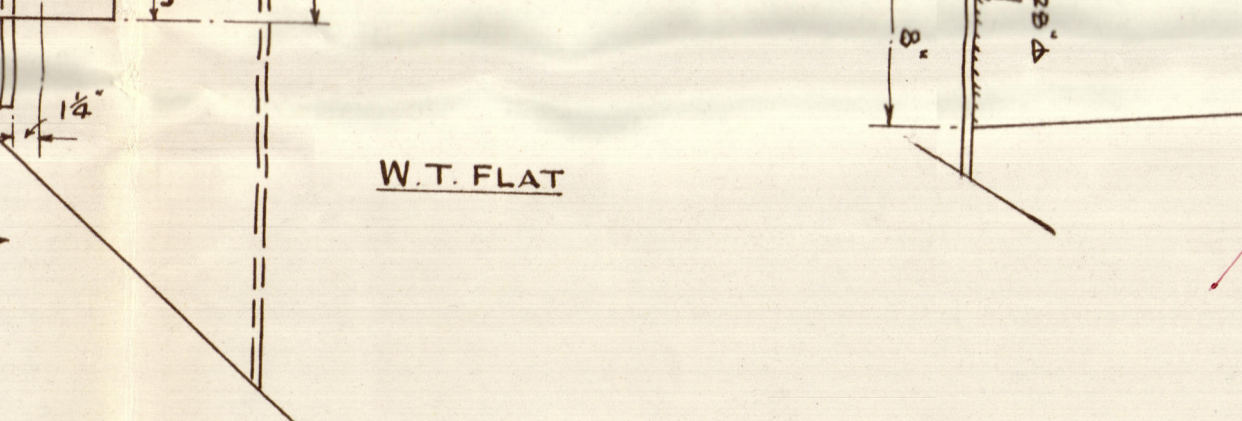
DETAIL OF FORGED STEEL RUDDER STOCK



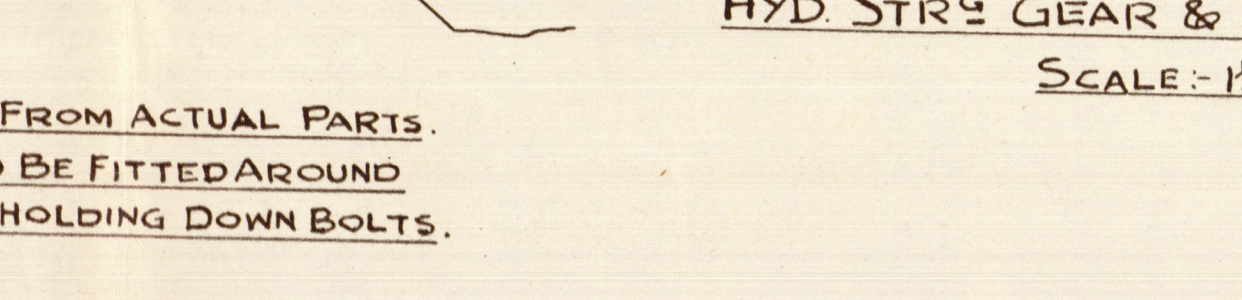
DETAIL OF FORGED STEEL RUDDER STOCK



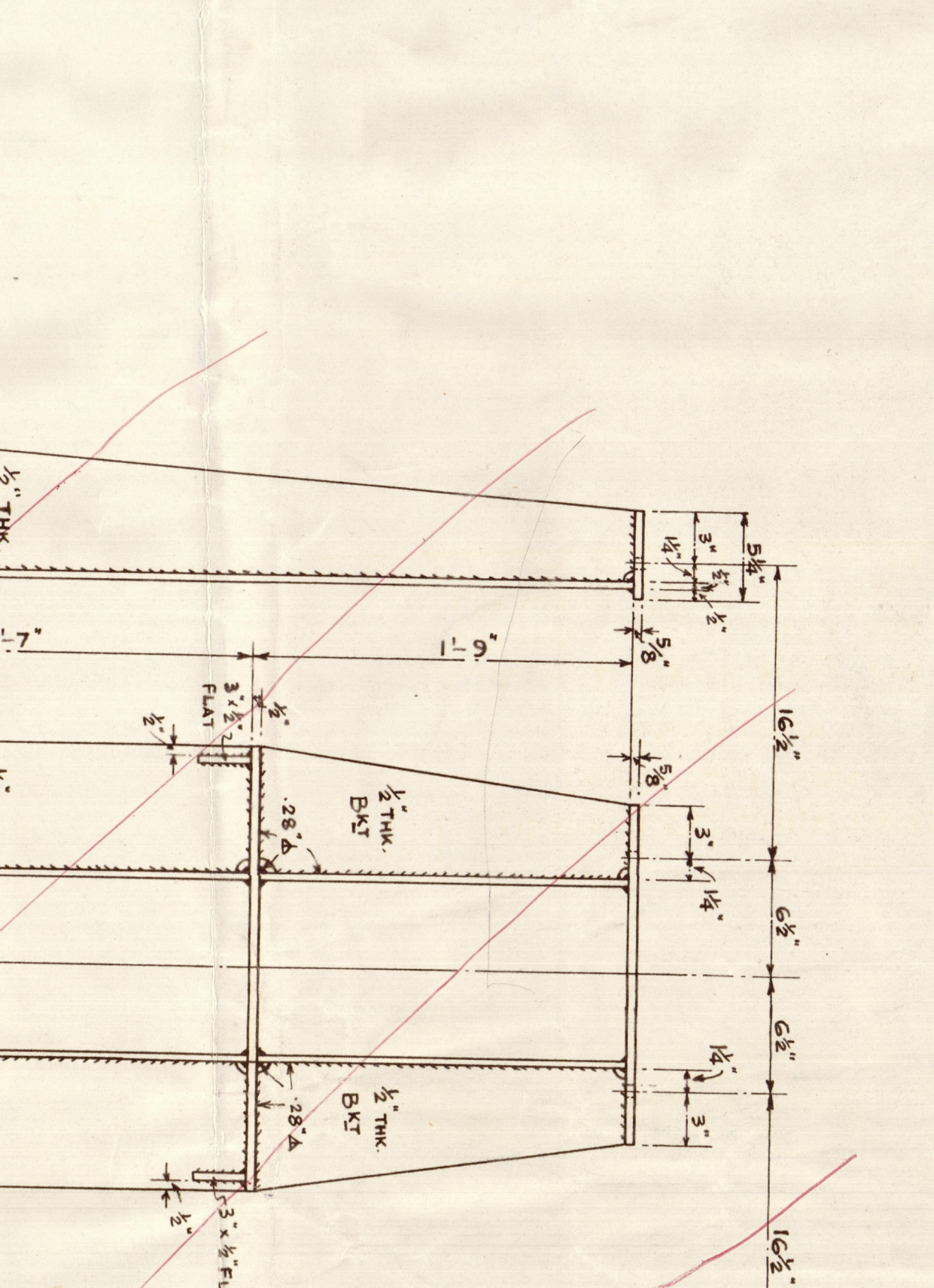
DETAIL OF FORGED STEEL RUDDER STOCK



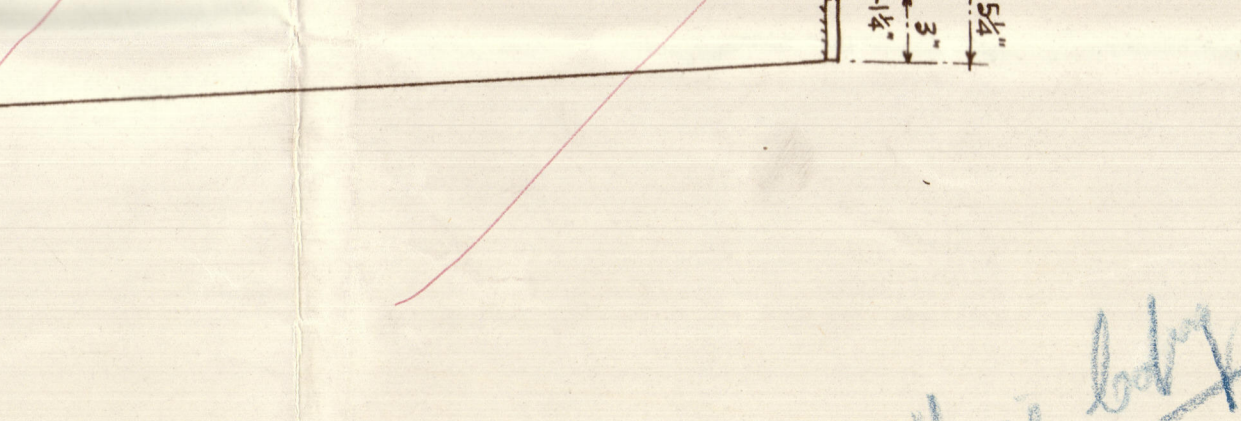
DETAIL OF FORGED STEEL RUDDER STOCK



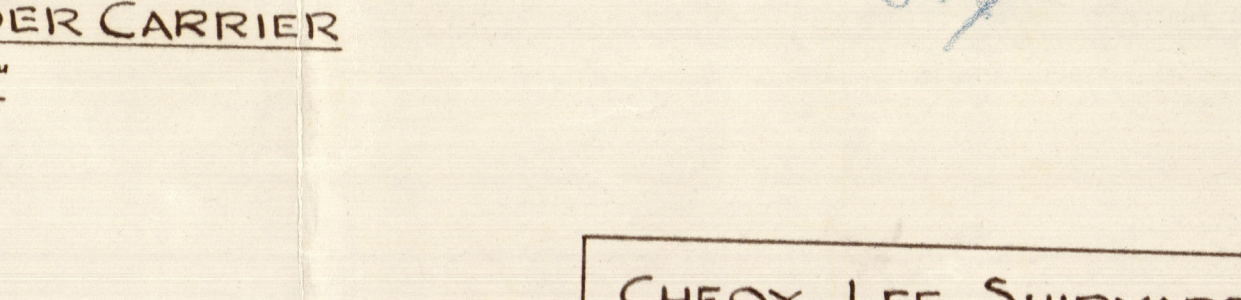
DETAIL OF FORGED STEEL RUDDER STOCK



DETAIL OF FORGED STEEL RUDDER STOCK



DETAIL OF FORGED STEEL RUDDER STOCK



DETAIL OF FORGED STEEL RUDDER STOCK

CHEONG LEE SHIPYARD  
NGAU CHI WAN  
KOWLOON  
CHECKED BY: NGONG TIM  
DRAWN BY: HO HOY  
DRAWING NO: 145  
DATE: 30-10-1956



IAN CROUCH ★

RECORDS DEPT.  
LONDON.

5

CHEOY LEE.

YARD. NO. 669.

STERN FRAME & RUDDER

DETAILS. 004230-004237-0053

© 2020

Lloyd's Register  
Foundation