

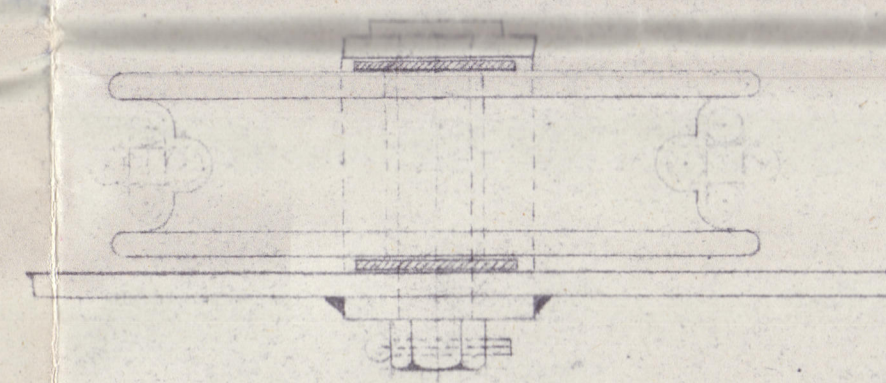
M.V. "POLLURIAN"

RE-ARR^{ED} & DETAILS OF STEERING GEAR

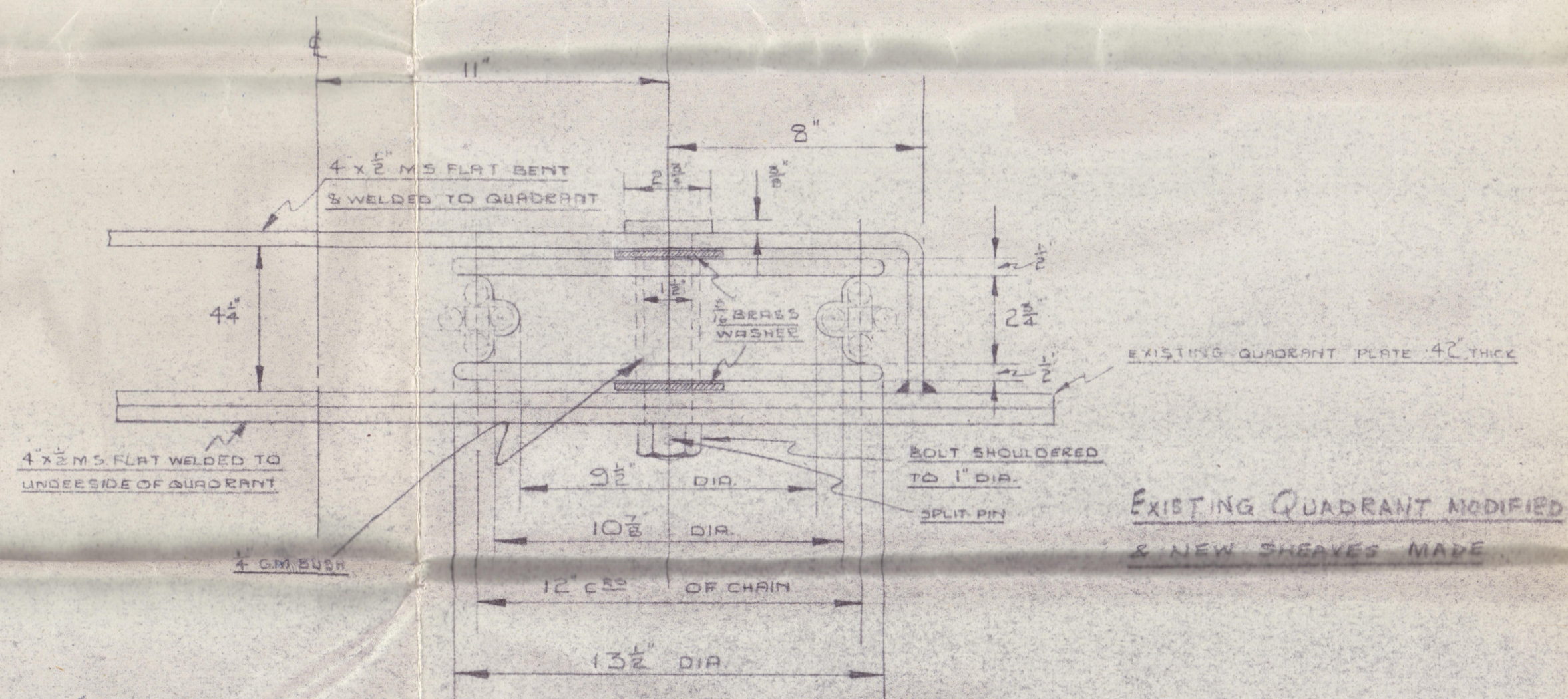
SCALES - AS MARKED

NOTE: WORK TO BE PREPARED TO ENSURE QUICK TURN-ROUND OF VESSEL

LLOYDS
STAMP
21.1.49

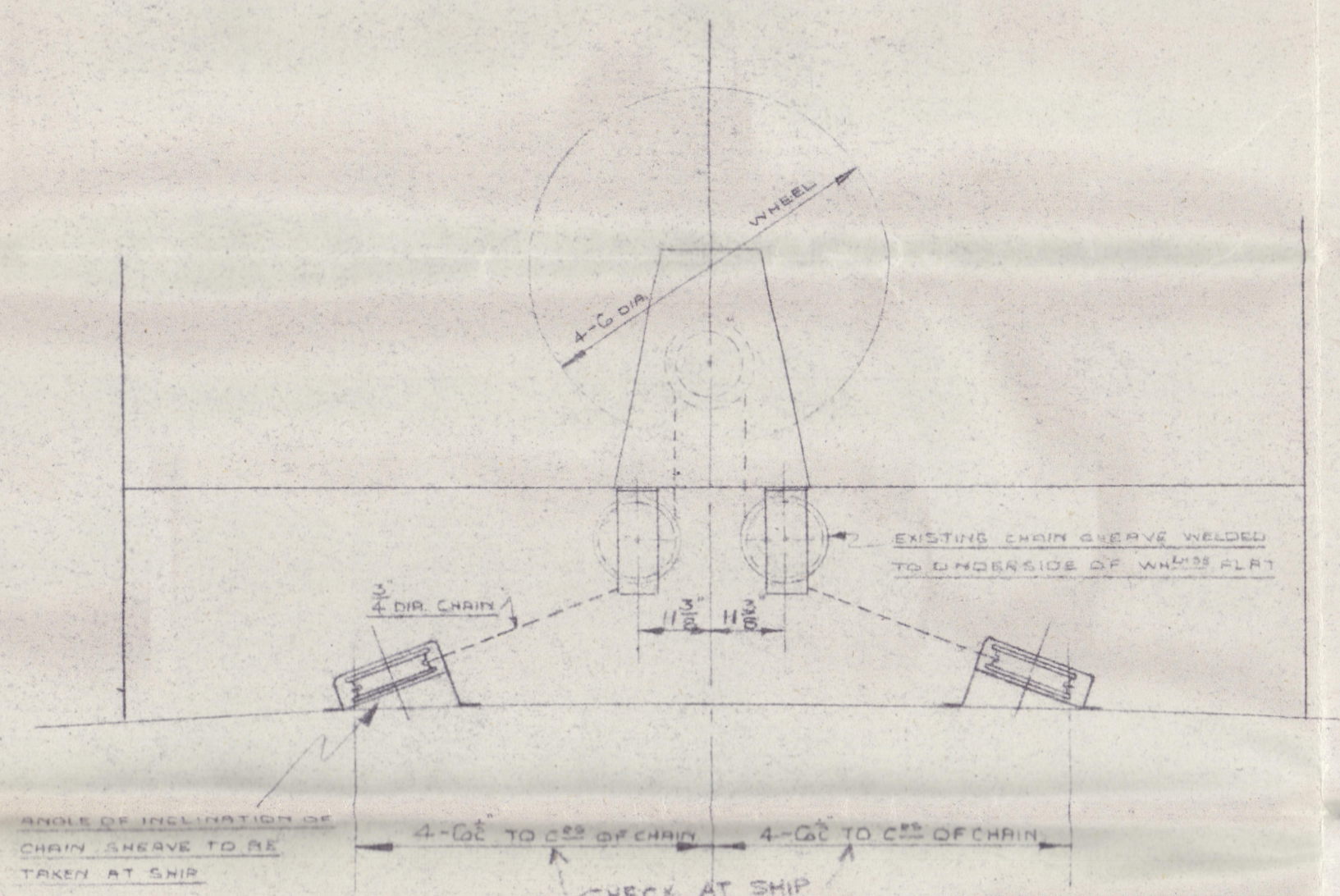


LONGITUDINAL SECTION OF QUADRANT SHEAVE



TRANSVERSE SECTION OF QUADRANT SHEAVE

SCALE 3" TO 1 FOOT



SECTION IN WAY OF WHEELHOUSE

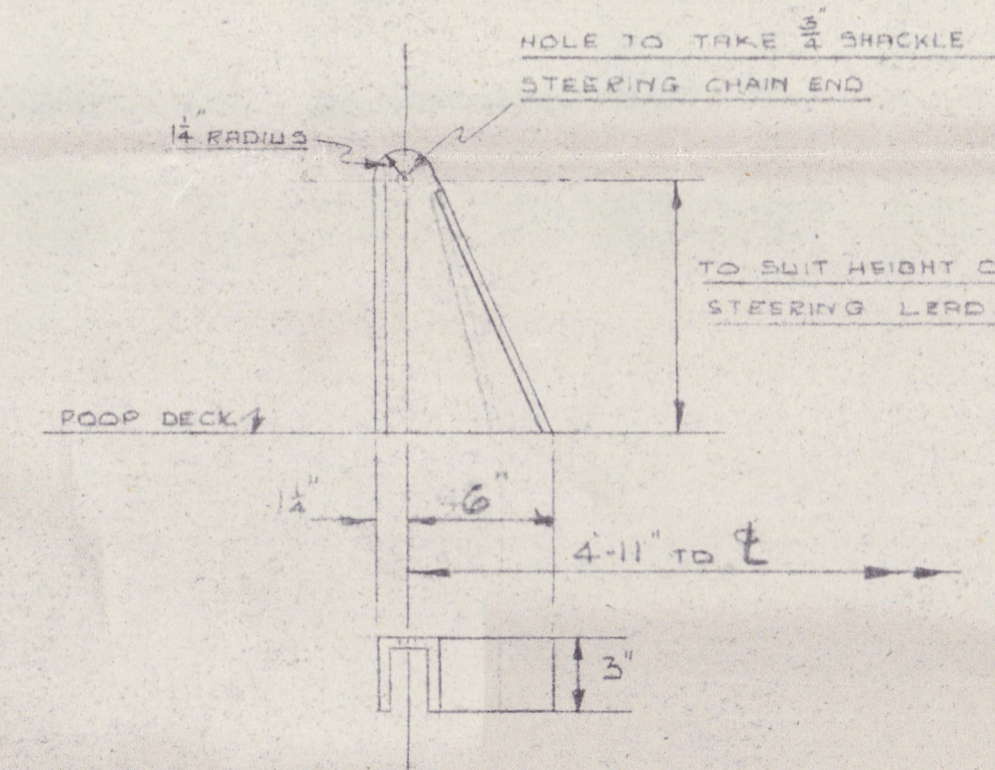
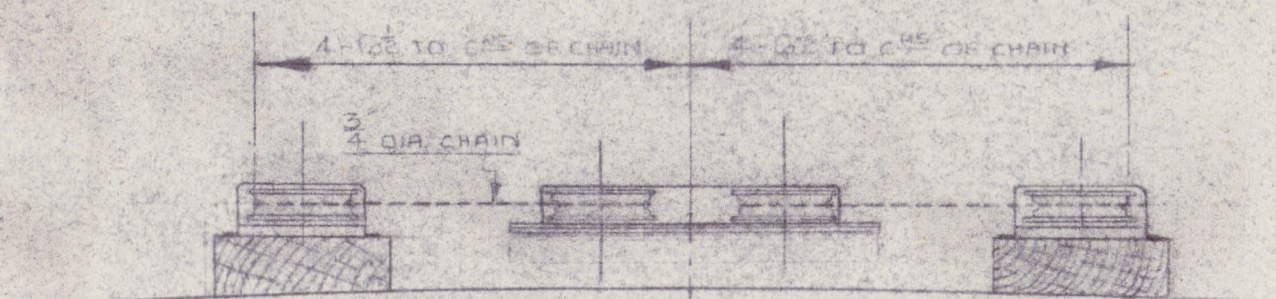
LOOKING FORWARD

SCALE 1/2" TO 1 FOOT

SECTION IN WAY OF QUADRANT

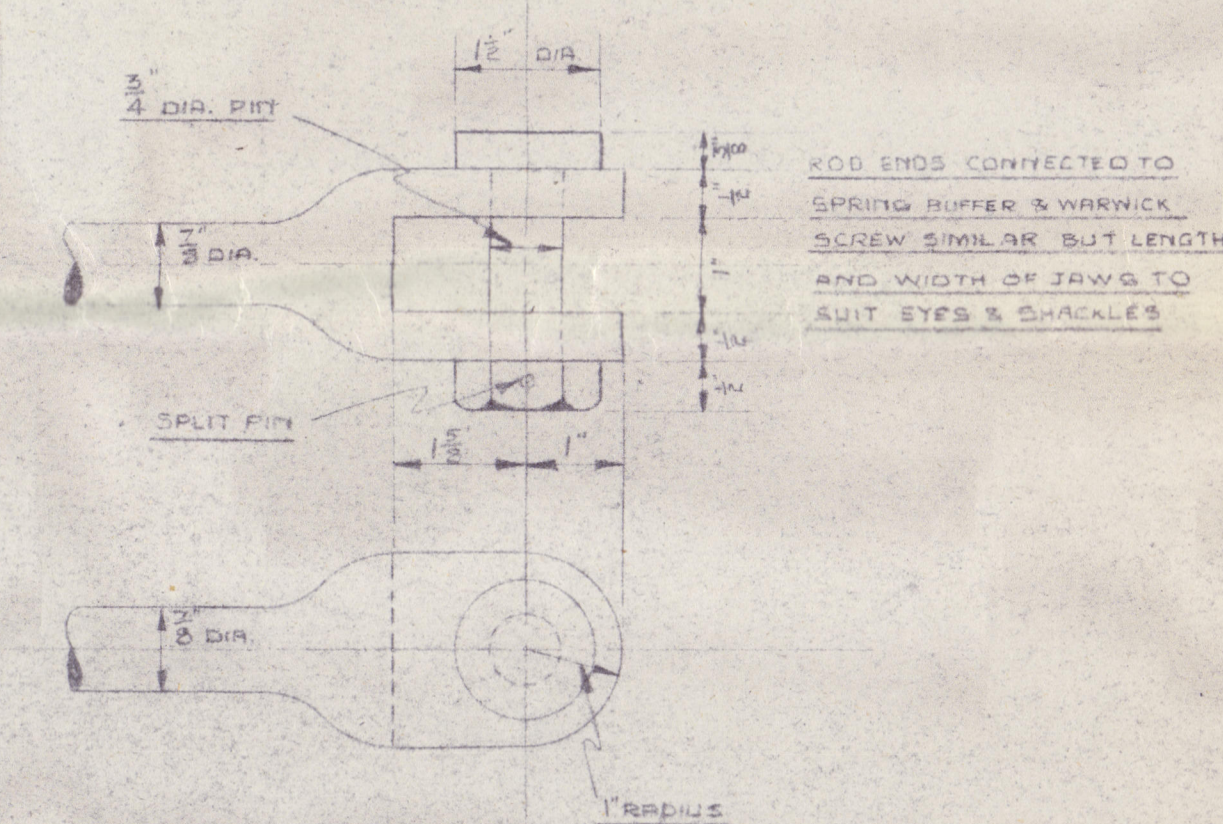
LOOKING FORWARD

SCALE 1/2" TO 1 FOOT



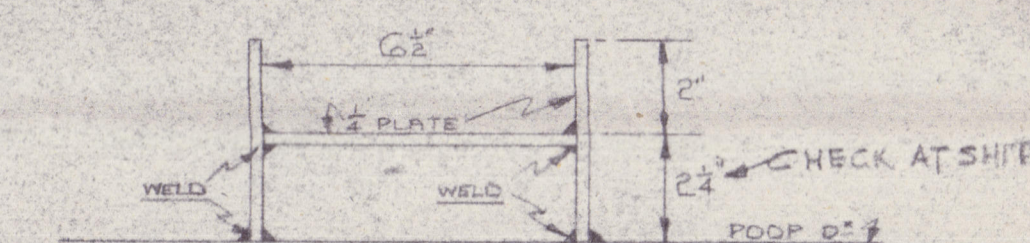
DETAIL OF CHAIN END LUGS

SCALE 1/2" TO 1 FOOT



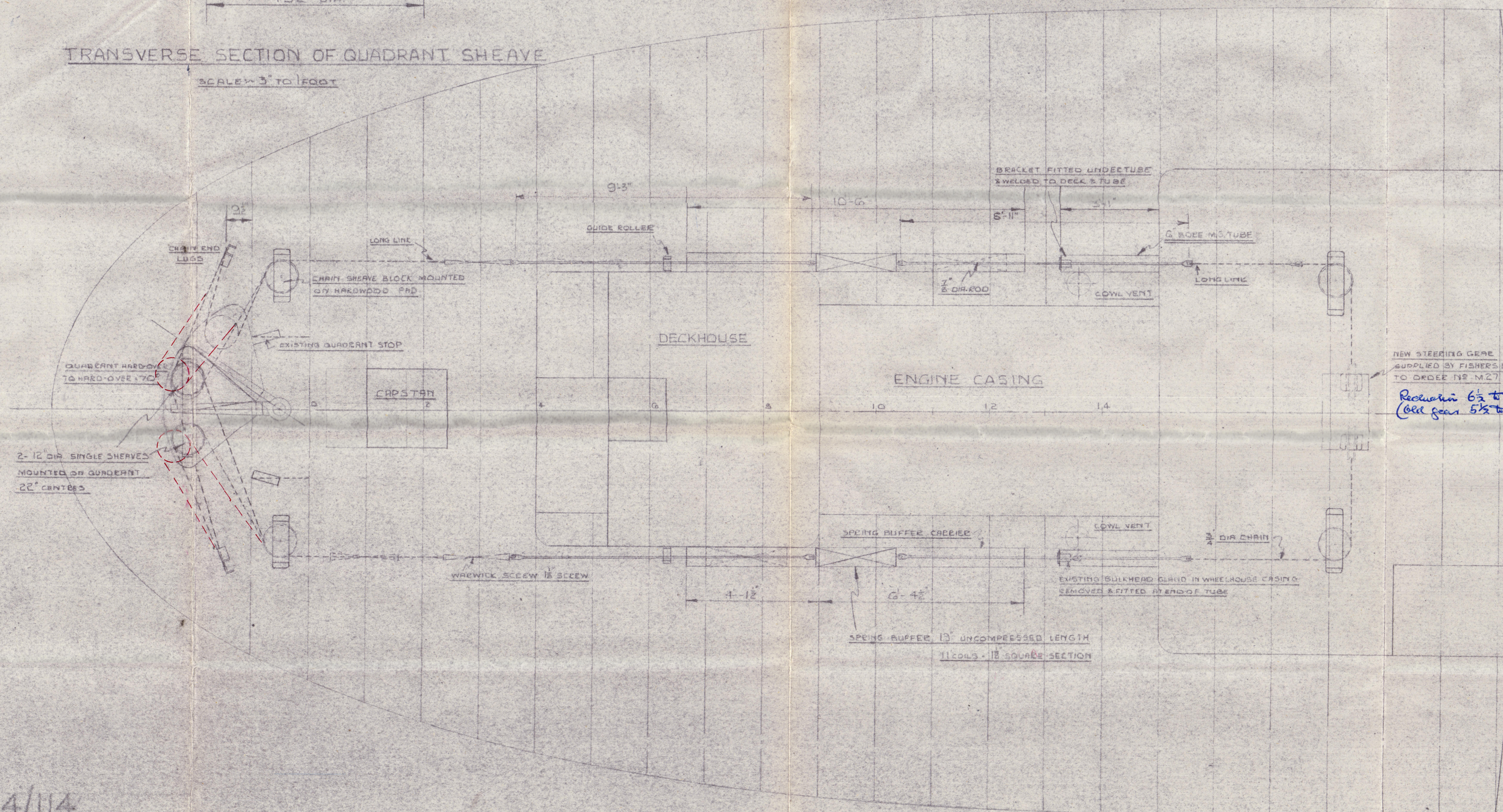
DETAIL OF STEERING ROD ENDS

SCALE 1/2" TO 1 FOOT



DETAILS OF SPRING BUFFER CARRIER

SCALE 1/2" TO 1 FOOT



NEW STEERING GEAR
SUPPLIED BY FISHER'S LTD
TO ORDER NO. M27 (MODIFIED)
*Requiem 6 1/2 to one
(all gear 5 1/2 to one)*

INITIALED

20.1.49

A/C N^o 4/114

"POLURRIAN"¹

RPT NO TOR 7923.

Steering gear.

004222-004229-0003



© 2021

Lloyd's Register
Foundation