

# SHIP No 54 PROFILE & DECKS.

SCALE: -  $\frac{1}{8}$  - ONE FOOT.



SCANTLINGS OF BARS MODIFIED TO SUIT  
LIST OF STEEL SECTIONS FOR THE EMERGENCY  
SHIPBUILDING PROGRAMME OF MERCHANT SHIPS

DIMS. 150'-0" B.P. x 26'-0" MLD. x 10'-1" MLD.  
TO CLASS LLOYDS 100 A.I.

## POOP DECK

## BRIDGE DECK.

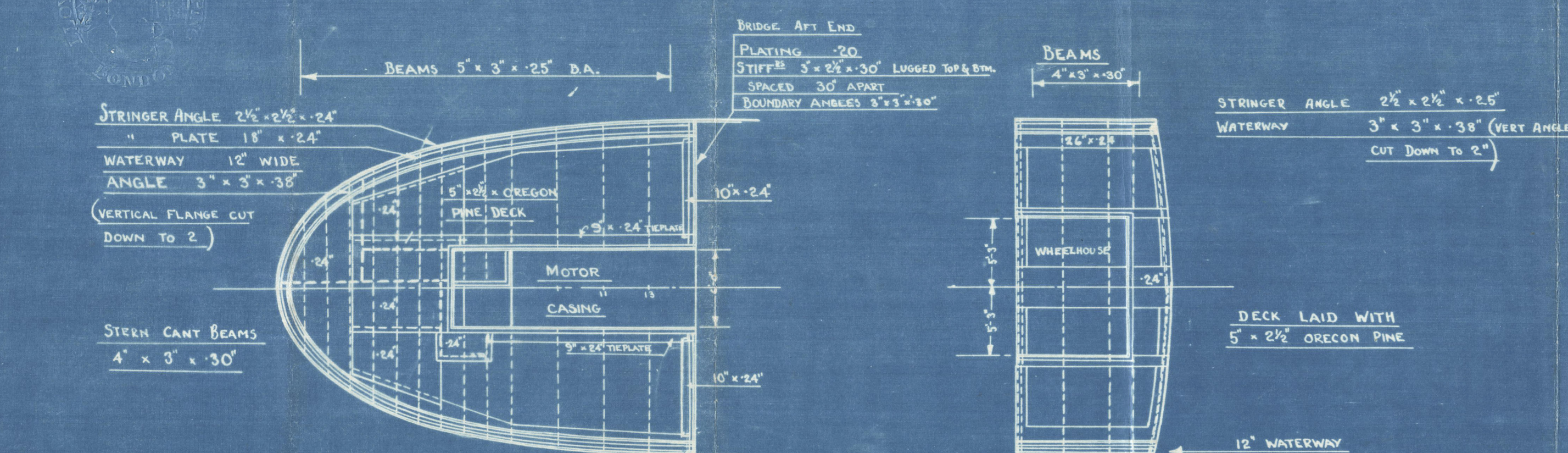
## DETAILS AT BREAK OF RSD. QTR DECK

## RAISED QTR DECK END: FRAME 53

## LOOKING AFT

## CHANNEL PILLAR ON $\phi$

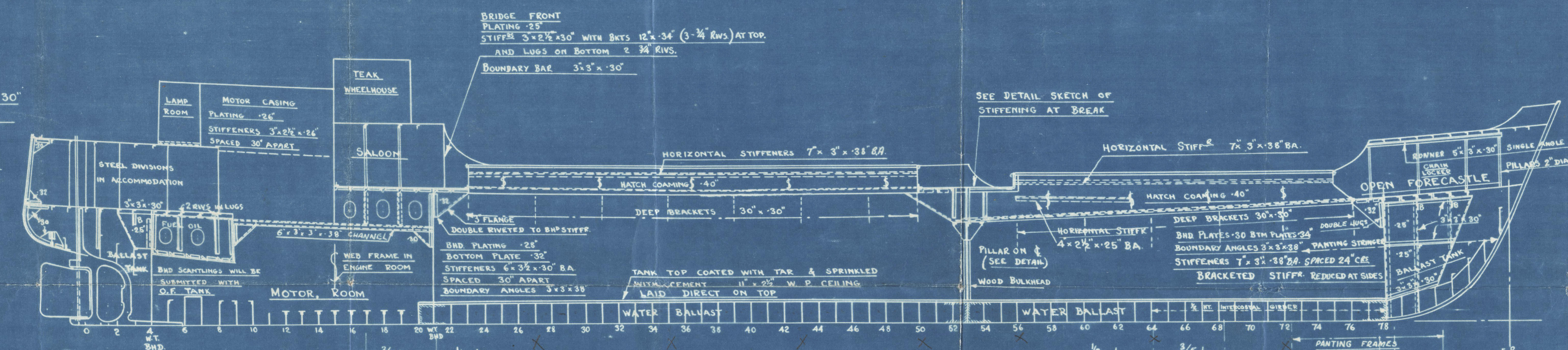
## F. & A. VIEW.



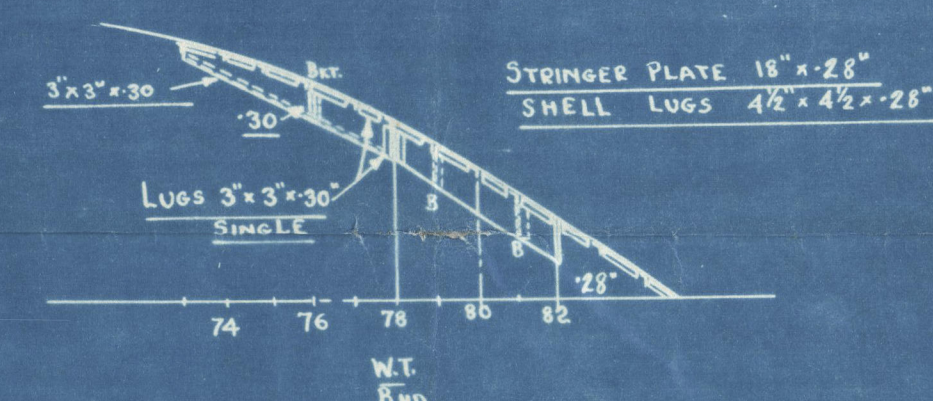
CANT FRAMES 4' x 3' x 30"  
LUGS 3' x 3' x 30"

PLAN OF OIL FUEL BTR  
WILL BE SUBMITTED

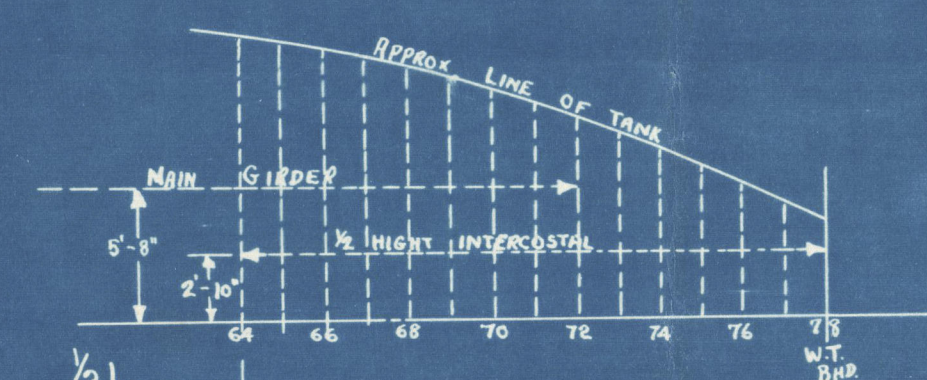
PLAN OF ENGINE SEATING  
WILL BE SUBMITTED



## PANTING STRINGER.



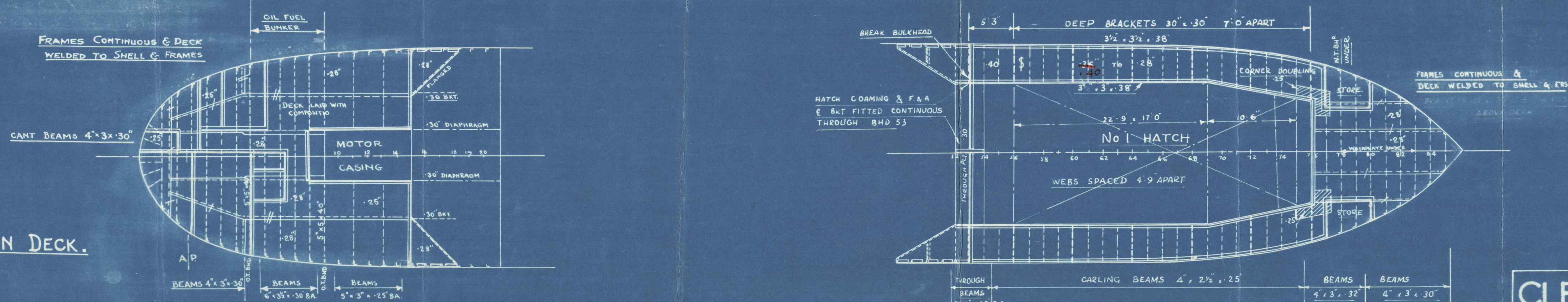
## FOLE. DECK.



ADDITIONAL STRENGTHENING OF DOUBLE BOTTOM FOR  
TANK FRAMES DOUBLE 2 1/2 x 25' FWD OF 1/2 L. DOUBLE RIV  
A. AND B. STRAKES OF SHELL INCREASED TO 35"  
RIVETS SPACED 5 1/2 DIA. APART CR. TO CR. IN  
FRAMES, FLOORS & PLATING  
SEAMS OF SHELL PLATING TO BE DOUBLE RIVETED

## RAISED QUARTER DECK

## MAIN DECK.



CLELANDS (SUCCESSORS) LTD.  
WILLINGTON QUAY-ON-TYNE.

DRAWN BY CHECKED BY DATE 26/OCT/39.



CLELANDS

(2)

22

SHIP NO 54

PROFILE & DECK. (as built)

MV. NORTHGATE

NEWCASTLE ON TYNE.

Report No. 99121

~~PLANS TRANSFERRED  
TO SISTER VESSEL~~

RETAIN

