

SINGLE SCREW TANKER

"EMPIRE DOMBEY"

L.B.P. 190'-0" x B.M.L.D. 30'-6" x DEPTH M.L.D. 14'-0"

MIDSHIP SECTION

CLASS LLOYDS 100A1 CARRYING PETROLEUM
IN BULK

LONGITUDINAL FRAMING AT BOTTOM AND AT DECK

SCALE 1/2 INCH = 1 FOOT

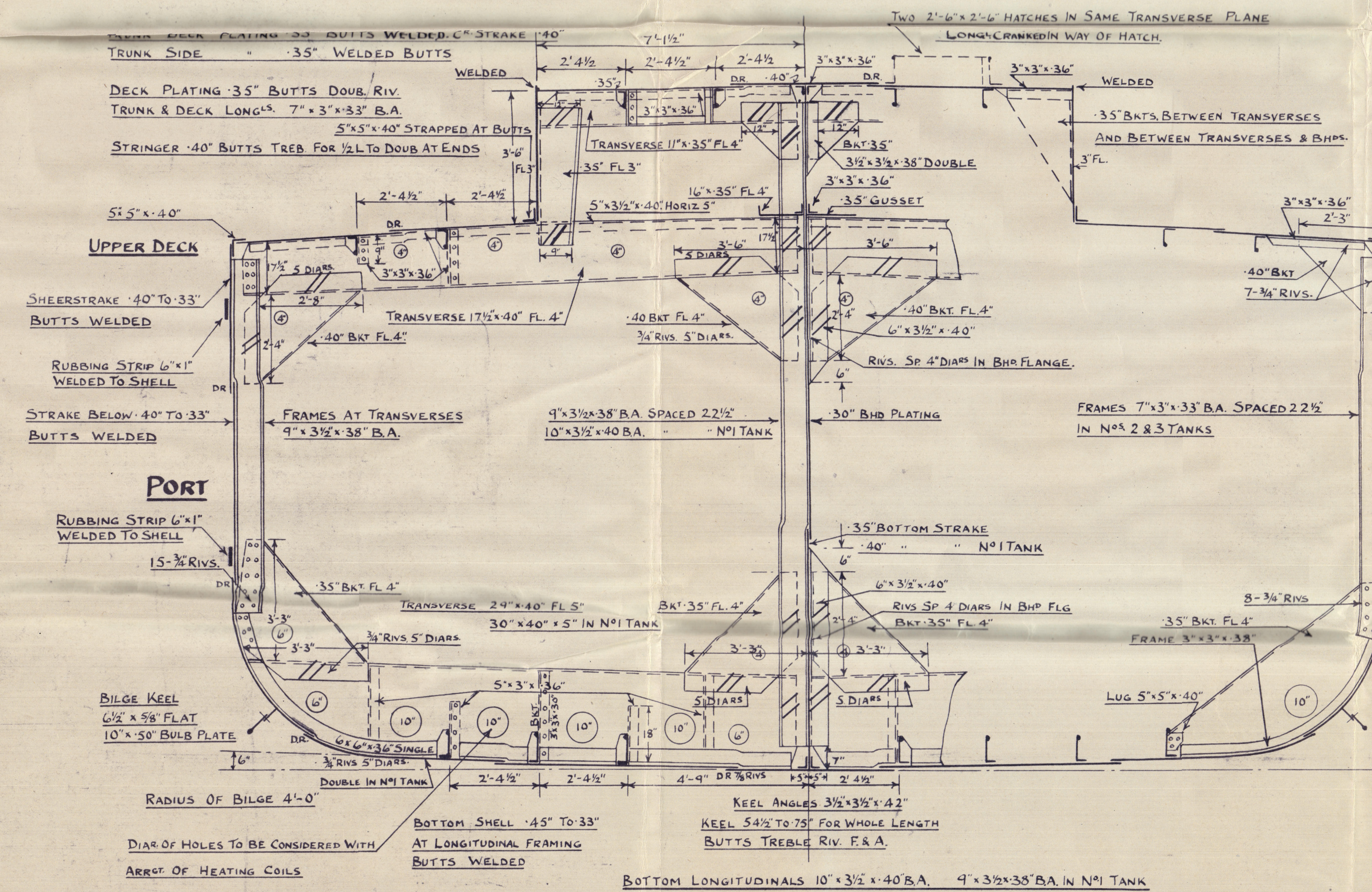
NUMERALS
D = 14.0
L x D = 2660
L x (B+D) = 8455
L/D = 13.57

EQUIPMENT NUMERALS		
L x (B+D)	8455	
POOP	67-69 x 7.5 x 7.5	381
FOCLE	20-64 x 6.75 x 7.5	105
BOAT DR	58-62 x 7.5 x 5	218
DECK HOUSE	16-3 x 7 x 5	57
TRUNK	100-5 x 3.5 x 5	176
		9392

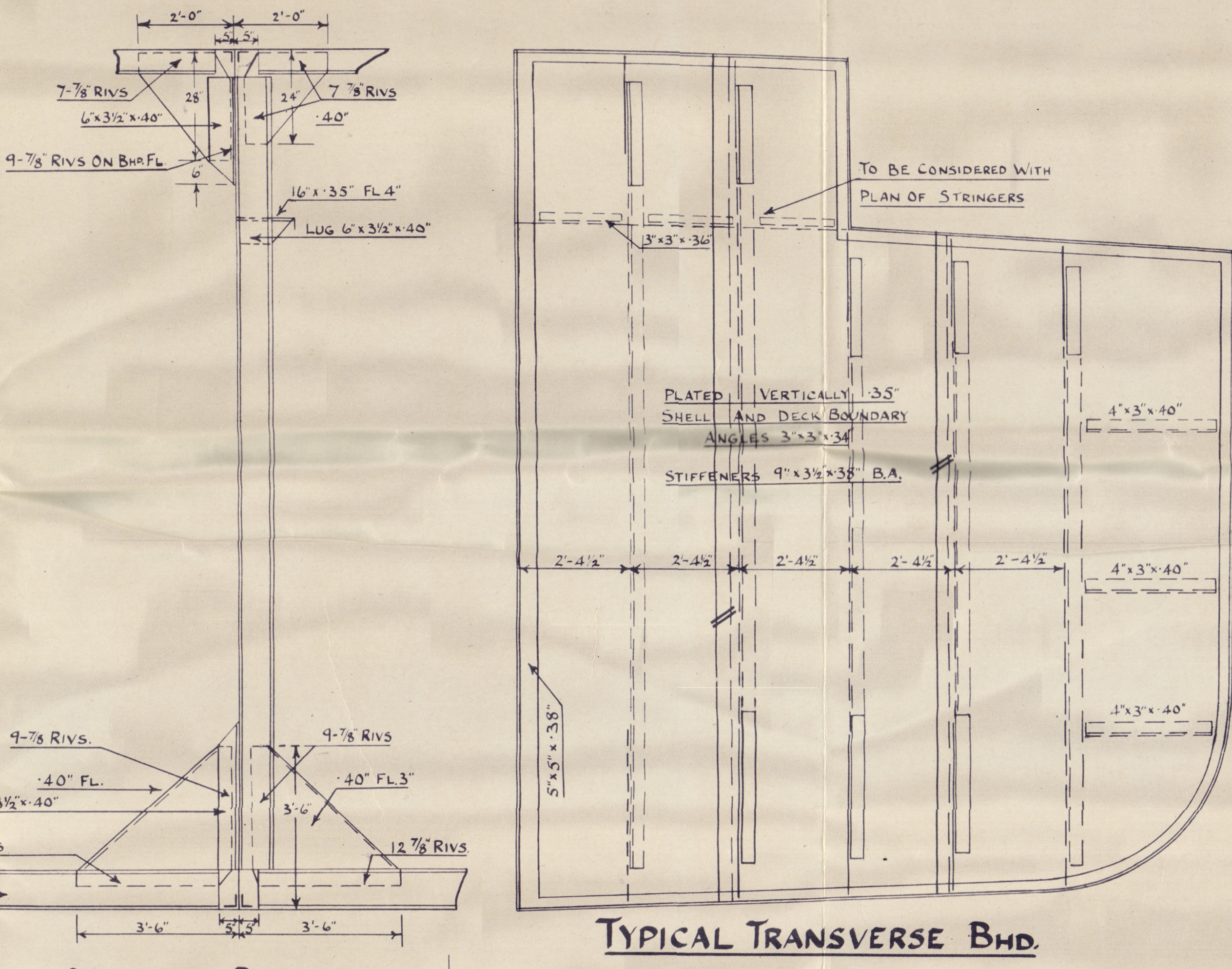
EQUIPMENT		
2 BOWER ANCHORS	STOCKLESS EACH	19 CWTs
1 STREAM	EX STOCK	5 1/4 "
180 FATHOMS	1 1/2" STUD LINK CABLE	
60 "	3/4" 6x12 FLEXIBLE STEEL WIRE STREAM	
90 "	3" "	TOW LINE
90 "	2 1/4" "	HAWSEERS
90 "	1 1/2" "	WARPS

STEM 6 1/2 x 1 3/8
FRAME SPACING IN PEAKS 22"
" ELSEWHERE 22 1/2"
BULB ANGLES ARE N.B.S.

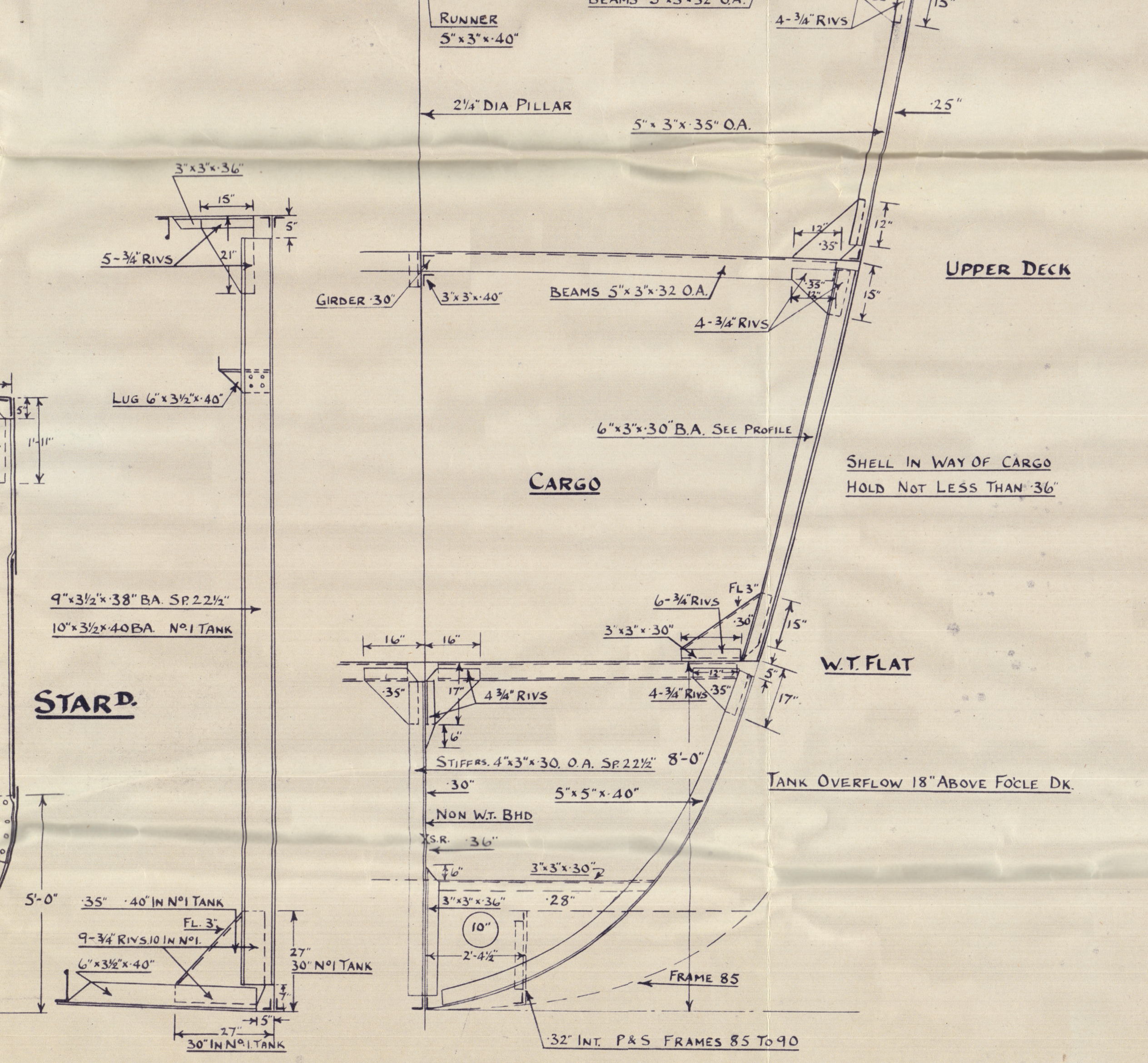
TEST 5'-0" ABOVE CROWN
CAMBER 7 1/2"



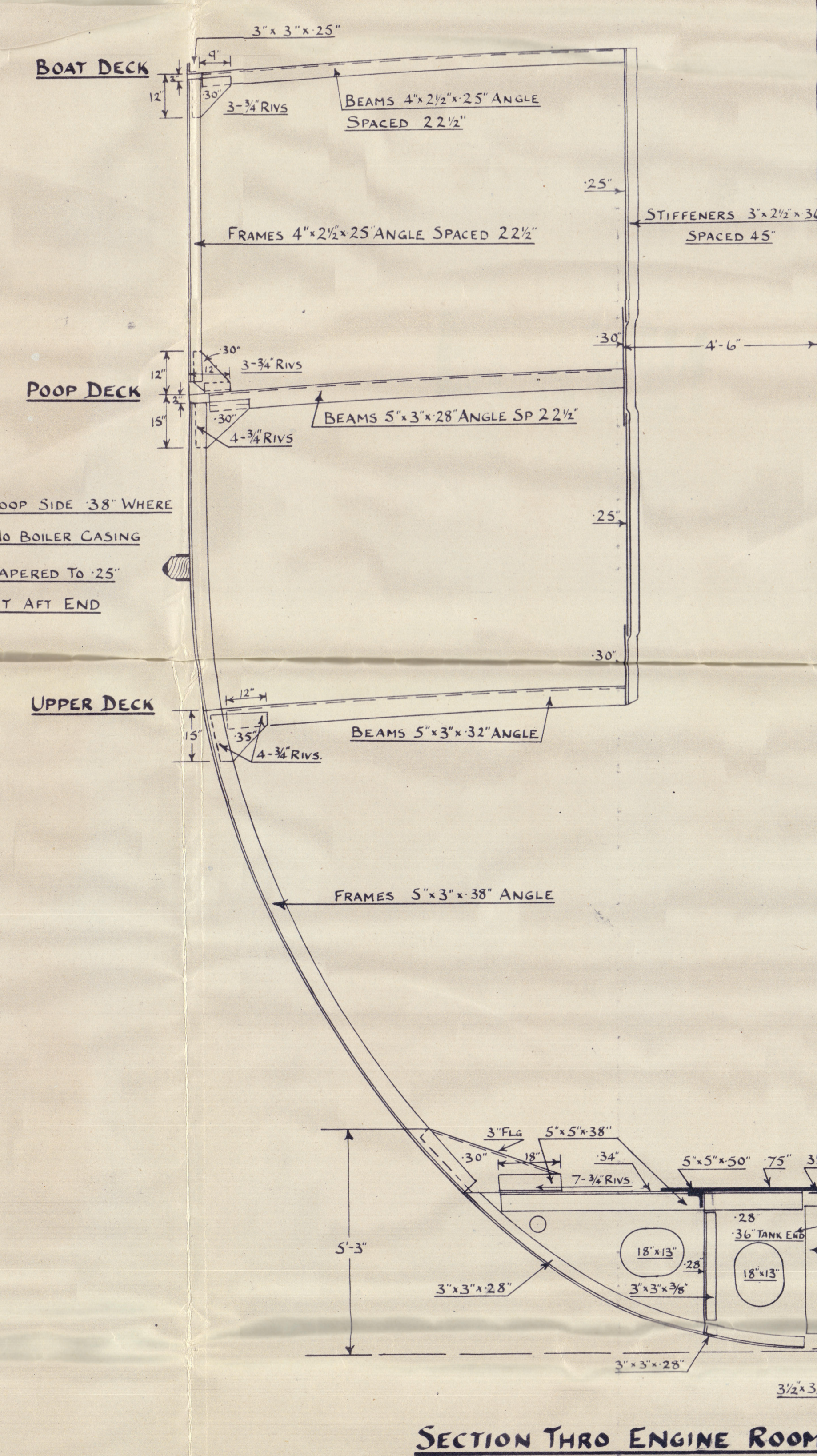
TWO STRAKES OF BOTTOM SHELL NEXT KEEL FROM 1/2 L TO RULE
POSITION OF COLL. BHD INCREASED TO .45" THK



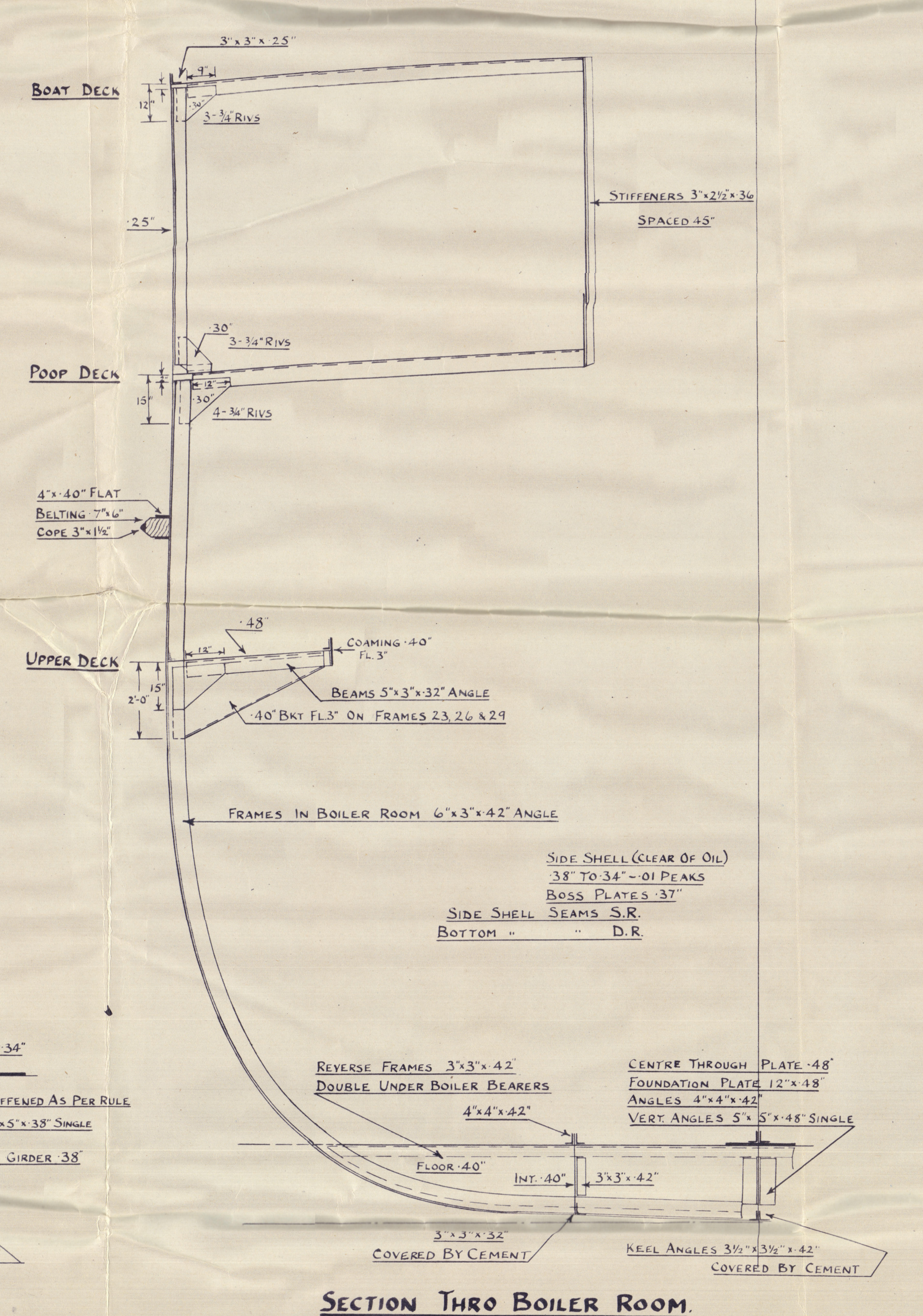
CONNECTION BETWEEN BHDs AND LONGITUDINALS



SECTION THRO. FORE TANK FRAME 92



SECTION THRO ENGINE ROOM.



SECTION THRO BOILER ROOM.

A. & J. Dyer Ltd

1227 P.

Midship Section (as built.)

"Empire Dombey" * Allwicks

Glasgow Report No. 68627.

004200-004205-0178

Sister Vessel

A. & J. Dyer Ltd.
1225P

Glasgow Rpt 67910



© 2021

Lloyd's Register
Foundation