

27 APR 1954

40550

Rpt. C. 11 (Contd.)

Index No.

# Lloyd's Register of Shipping.

Ship's Name "CORRALES"

Official No. 161902

Memorandum of alterations reported since ship was surveyed for assignment of Load Lines in

The following modifications were carried out at Glasgow about August 1948 in converting the vessel from coal to Oil Fuel Burning.

## Hatchways on Superstructure Decks.

Bridge deck bunker hatch partly plated over leaving hatch opening 7'6" x 6'8" for Galley bunker. Upper deck level plated over. Steel division fore and aft starboard of centre line. Port side used for access to store and top of tanks on 2nd deck. (Beam dispensed with).

Saddle back hatchway on bridge deck in machinery casing reduced to 6'4" x 4'9" on starboard side divided by a fore and aft bulkhead 3'0" to starboard of centre line. From peak of saddle back to top of casing, port side of space plated over at upper deck level, bridge deck level and at casing top.

Double doors on port side of casing in way removed and single steel door fitted forming a deck store.

## Ventilators (to space below decks of superstructure intact)

One - 13" diam. hooded vent and one fan vent fitted on plated portion of bunker hatch on bridge deck (24" coaming).

## Air Pipes (Exposed on Superstructure Decks).

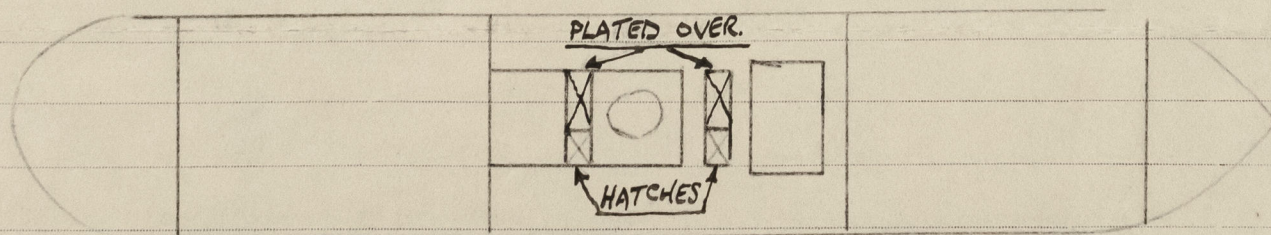
Six - 4" and One - 6" air pipes led from bunker and settling tanks to bridge deck fitted with perforated outlets.

## Coaling Ports, etc. (in shipside).

Four on port side and four on starboard side coaling ports in shipside between upper and second decks permanently closed.

One oil fuel filling port with steel door secured by strong back, fitted port and starboard between upper and second decks between 90 and 91 frames 3'1" x 16" - sill 24" above 2nd deck.

## BRIDGE DECK.



Mr Boulton  
Please

C. Newman Thomas.  
Bristol  
15.4.54.



© 2020  
Lloyd's Register  
Foundation  
E3 MAY 1954