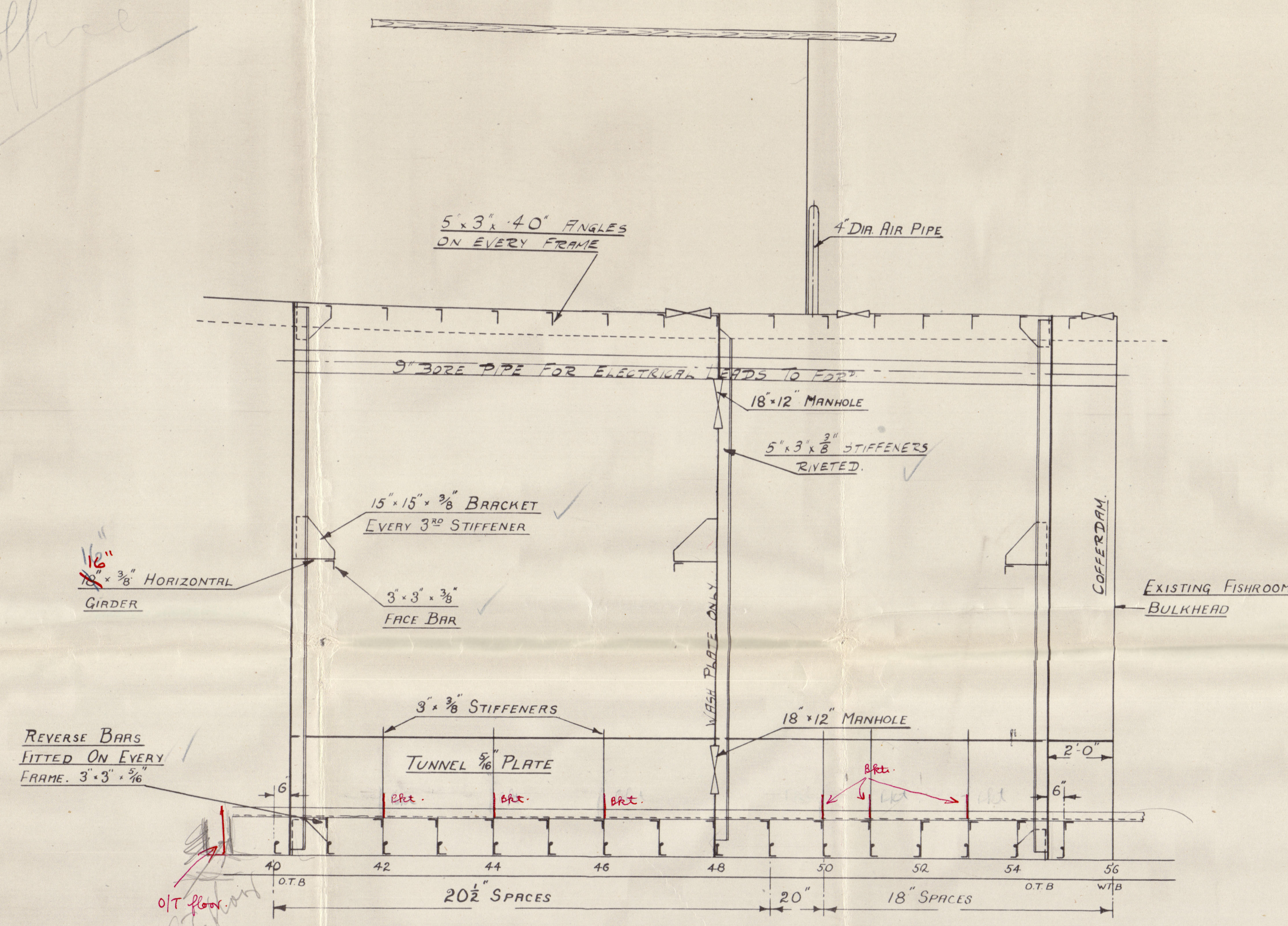
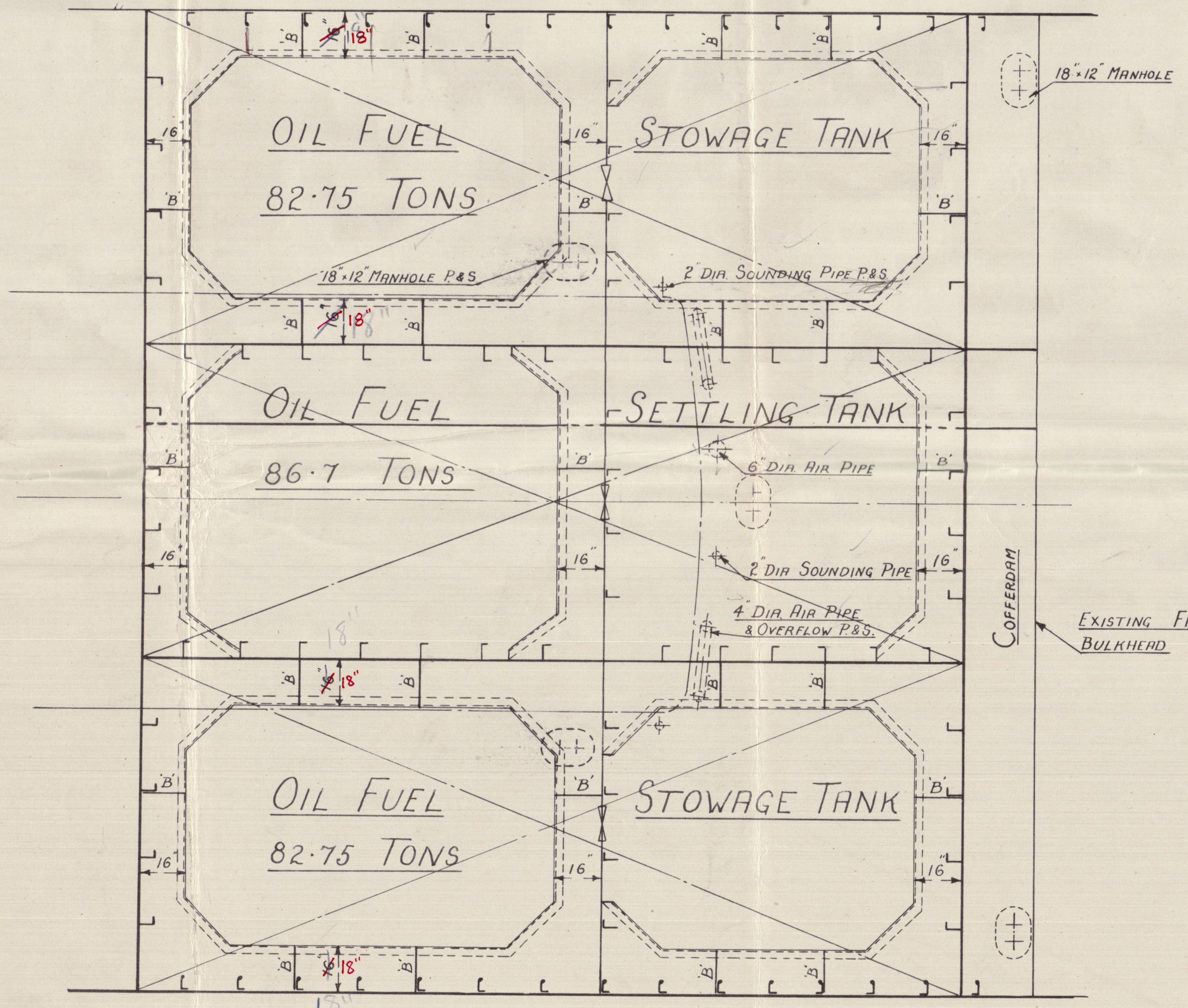


office



ELEVATION LOOKING TO PORT



PLAN

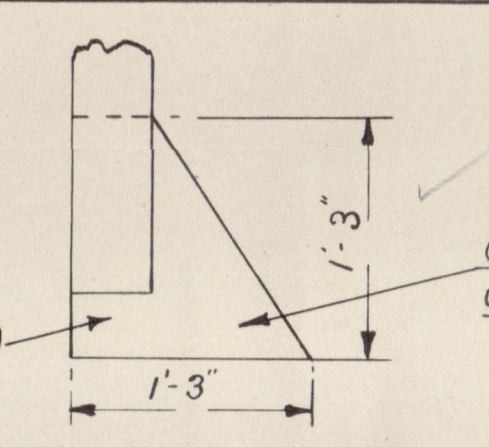
TOTAL OIL FUEL - 252.2 TONS.

ALL PLATING 5/8" AND AS MARKED

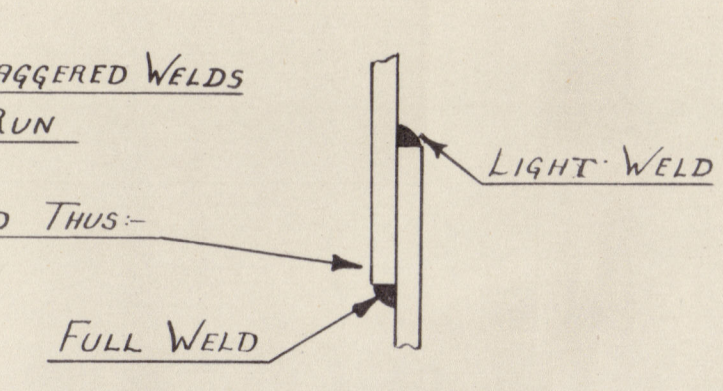
STIFFENERS 5'3" x 3/8" ANGLE TOE WELDED WITH WELDED BRACKET TOP & BOTTOM (SEE DETAIL)

BEAMS AND STIFFENERS - 3 STAGGERED WELDS 6' APART CR TO CR - 3/8" RUN

ALL SEAMS 1/2" WELDED THUS - SEE DETAIL

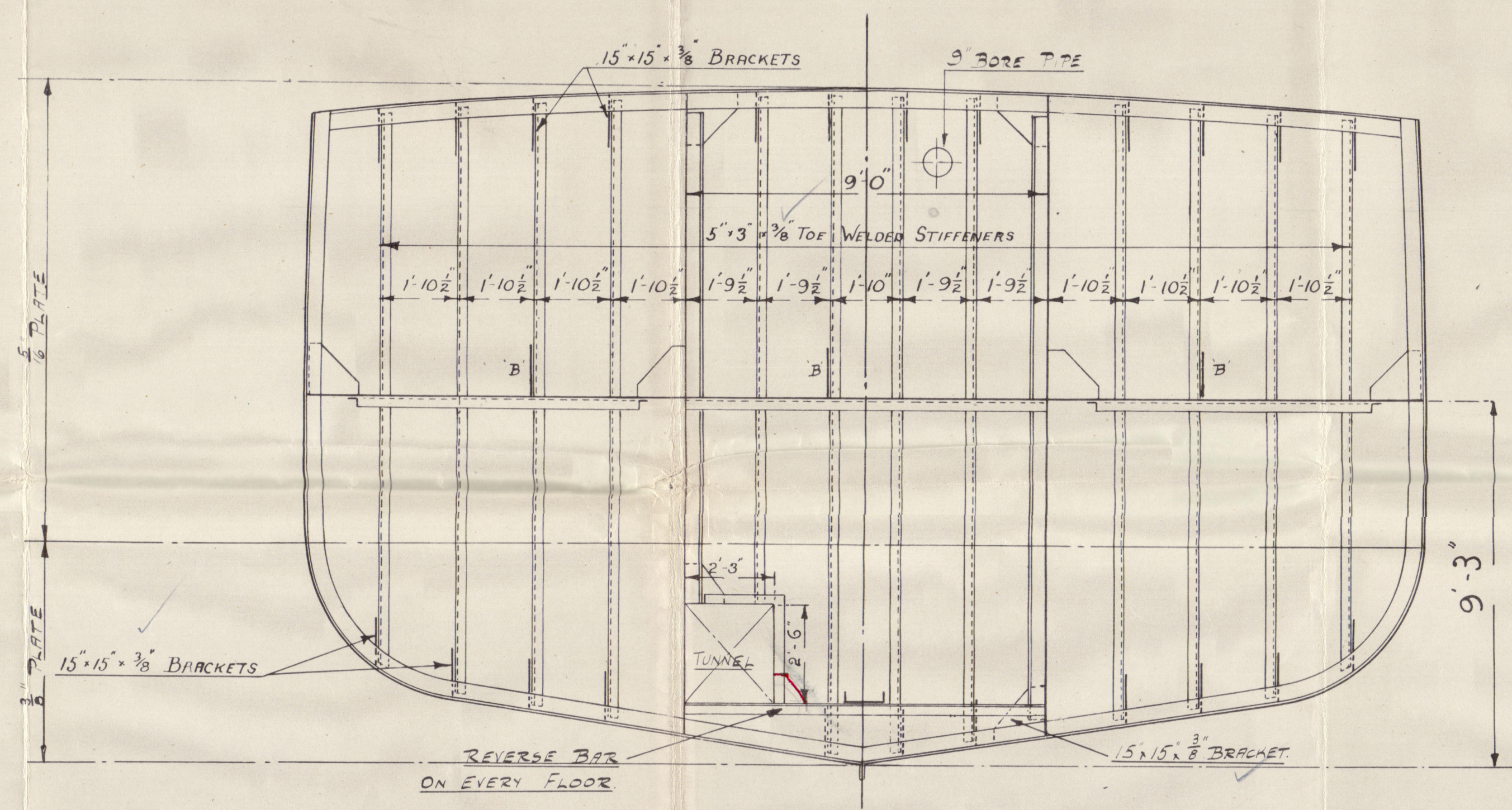


ON THWAARTSHIP BLDG BRACKETS CARRIED TO ADJACENT FLOORS OR BEAMS.

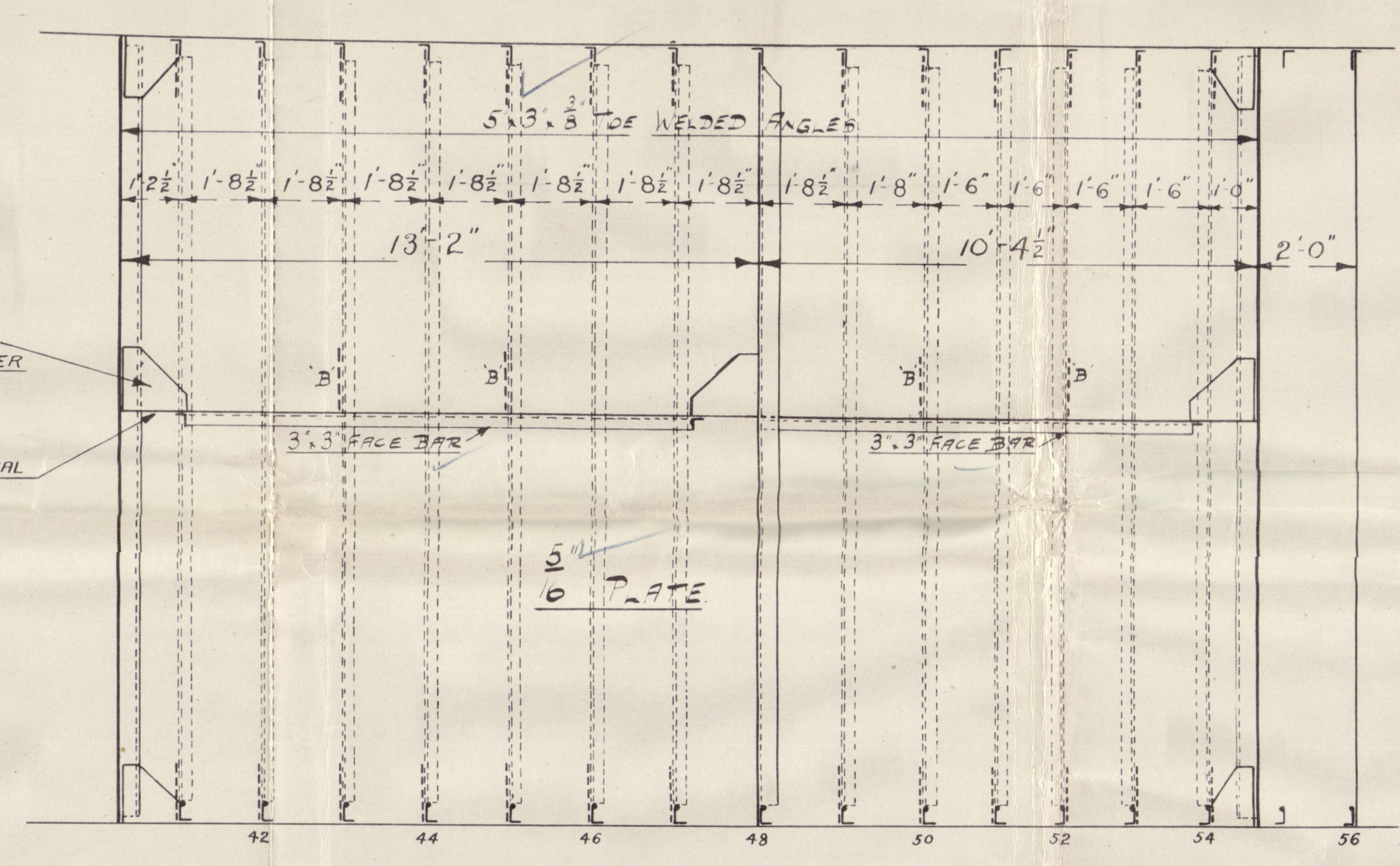


BUTTS WELDED THUS - 3/8" RUN LONG BLD TO SIDE SHELL & DECKS & GIRDERS TO SHELL & BLDG - 3/8" RUN LONG BLD TO BOTTOM & BULGE

MAXIMUM HEAD ON TANK - 3'-0" TANK TO BE TESTED TO 8'-0" HEAD ABOVE TOP



SECTION AT FRAME 54  
LOOKING FORWARD



SECTION THRO' STARBOARD STOWAGE  
TANK LOOKING TO PORT

NOTE:- Bulkheads to be riveted for better from Messrs. Seale & Wilson to the Admiralty Surveyors dated 1/6/47.  
alternative requirement for riveting...  
Plating 5/8" rivets spaced 2 1/2" apart in seams, butts and in boundary bars.  
If stiffeners riveted, to be 6 x 3 x 4.2 B.A. spaced as shown on plan.

# S.T. "HARCOOD" HILL CLASS TRAWLER OIL FUEL BUNKERS

SCALE - 3/8" = 1 FOOT

DIMENSIONS:- 165'-0" B.P. x 28'-0" MLD. x 15'-0" DEPTH MLD.

SECTION AT FRAME 41  
LOOKING AFT

office

3.6.49





004135-004144-0090



© 2020

Lloyd's Register  
Foundation



"Hargood."

Oil fuel bunker.

Guns rept-No. 23988.



© 2020

Lloyd's Register  
Foundation

004135-004144-0090