

# LEFT HAND HEADER DRAWN

NOTE! HEADERS TO BE "STRESS RELIEVED"  
AFTER WELDING ON HEADER FLANGE & ELBOW.  
BEFORE DRILLING ELEMENT JOINT & STUD HOLES.

LONDON COPY

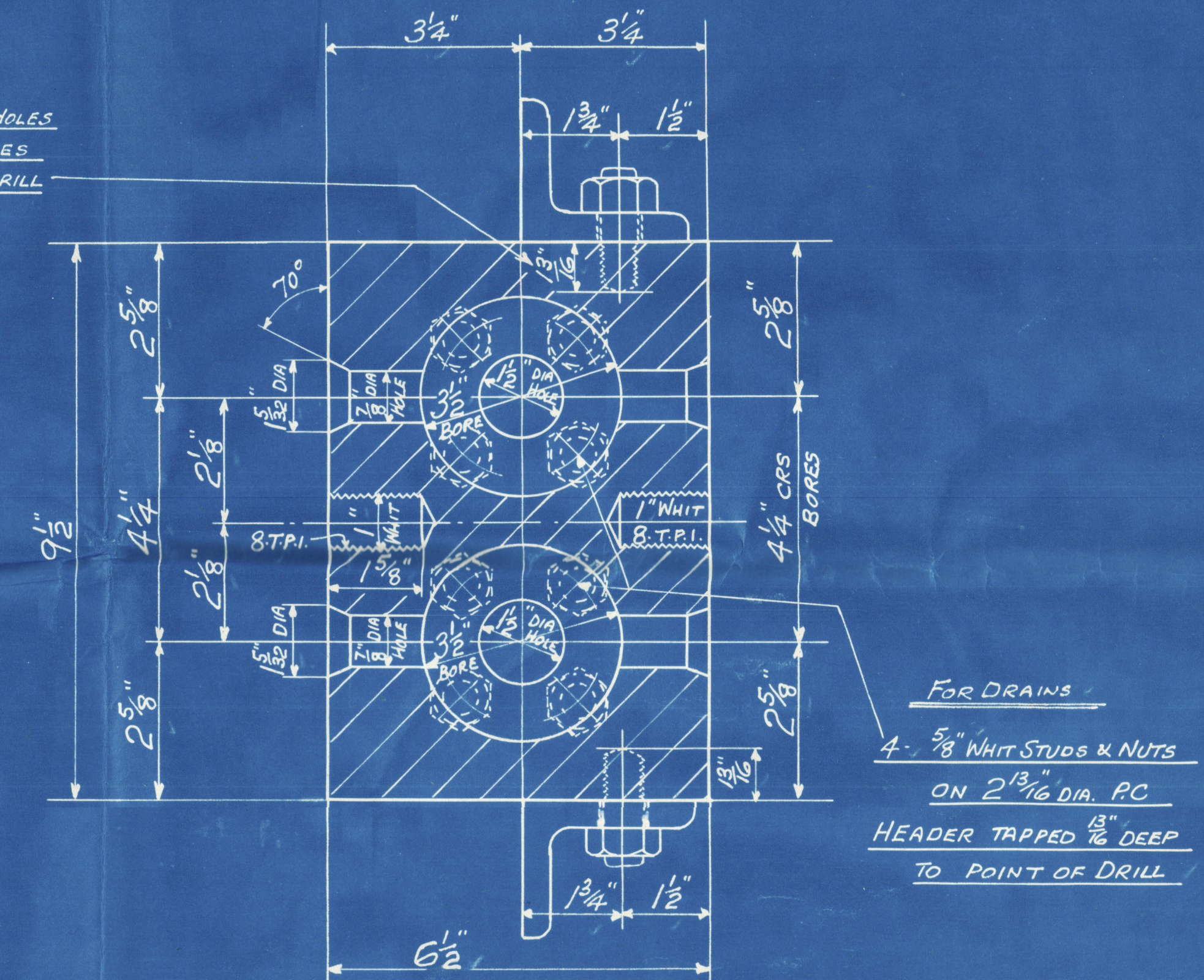
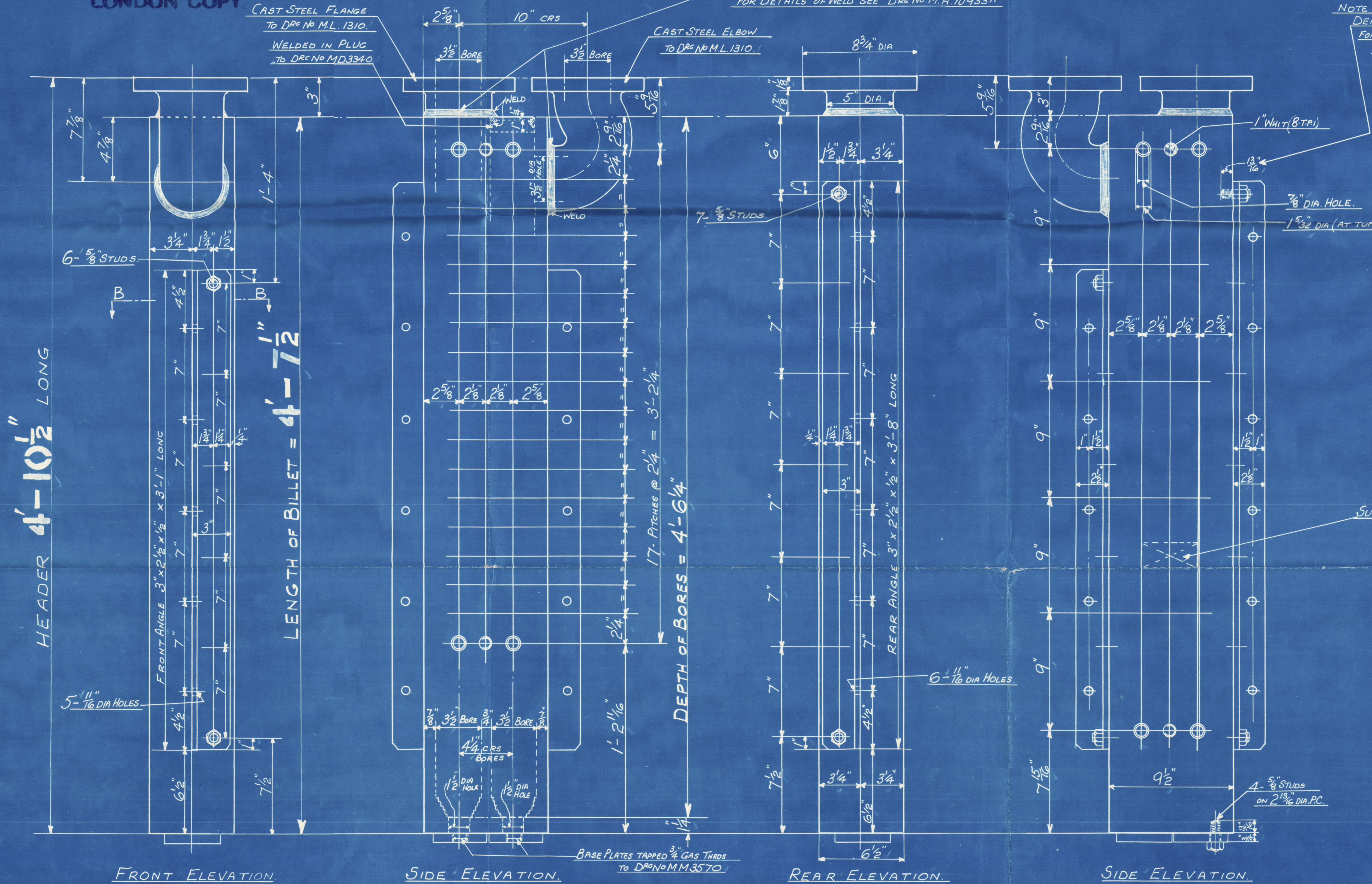
CAST STEEL FLANGE  
TO Dwg No M.L. 1310.  
WELDED IN PLUG  
TO Dwg No M.D. 3340.

FLANGE & ELBOW WELDED TO HEADER  
FOR DETAILS OF WELD SEE Dwg No M.A. 10933A

CAST STEEL ELBOW  
TO Dwg No M.L. 1310.

LONDON COPY.

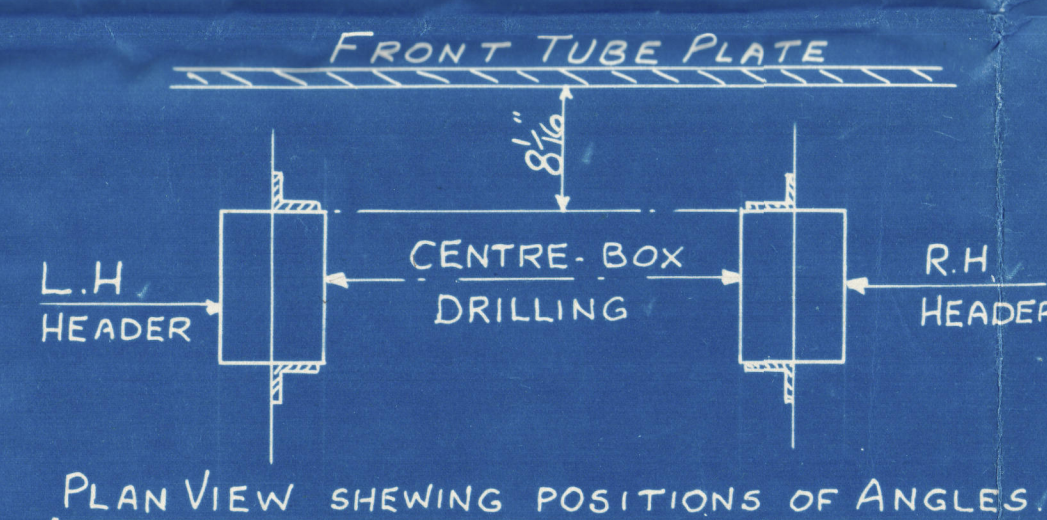
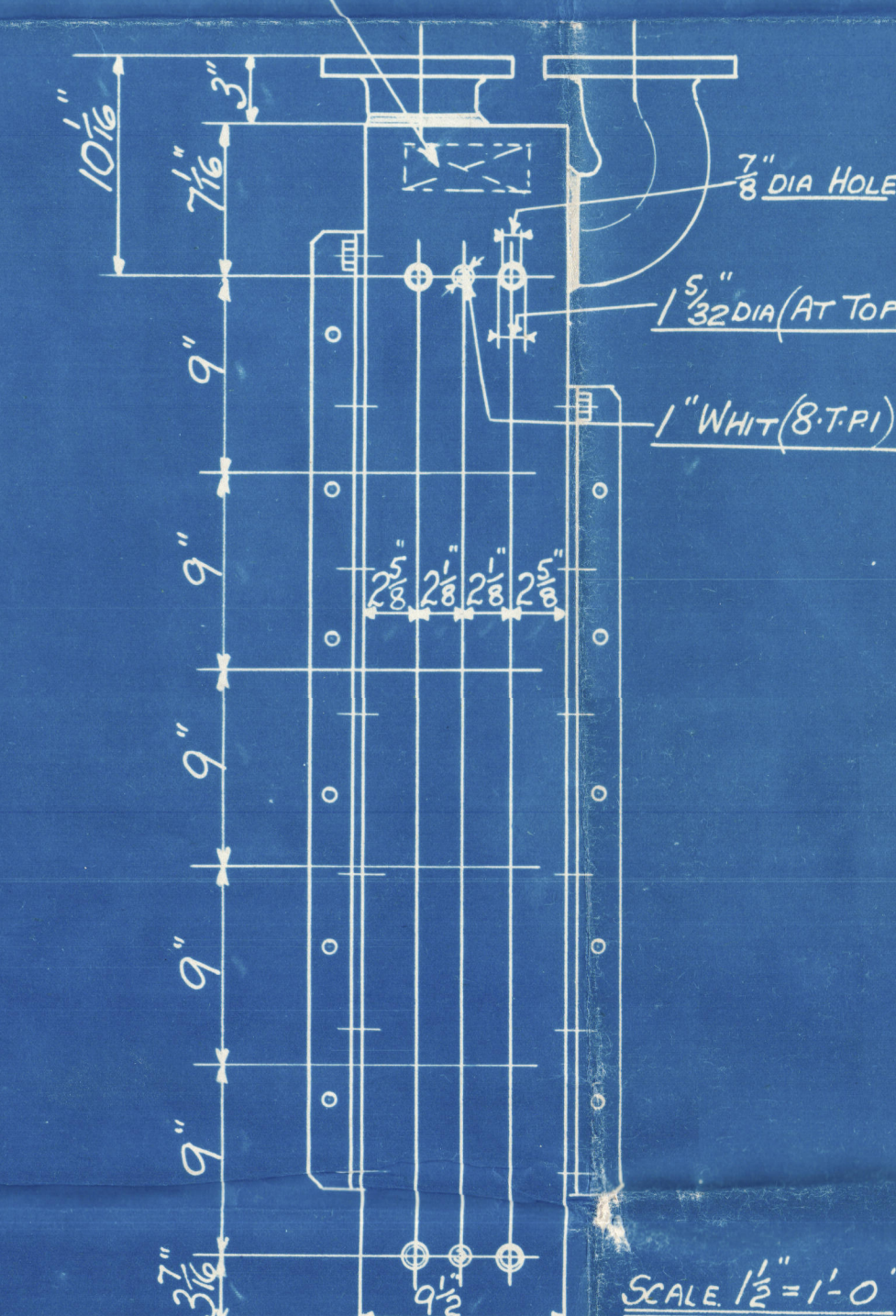
NOTE  
DEPTH OF ALL  $\frac{5}{8}$ " TAPPED HOLES  
FOR ANGLES & BASE PLATES  
GIVEN TO POINT OF DRILL



STEEL FORGING  
TO PASS LLOYDS SURVEY  
WORKING PRESSURE 220 LBS PER SQ. INCH  
TEST 660

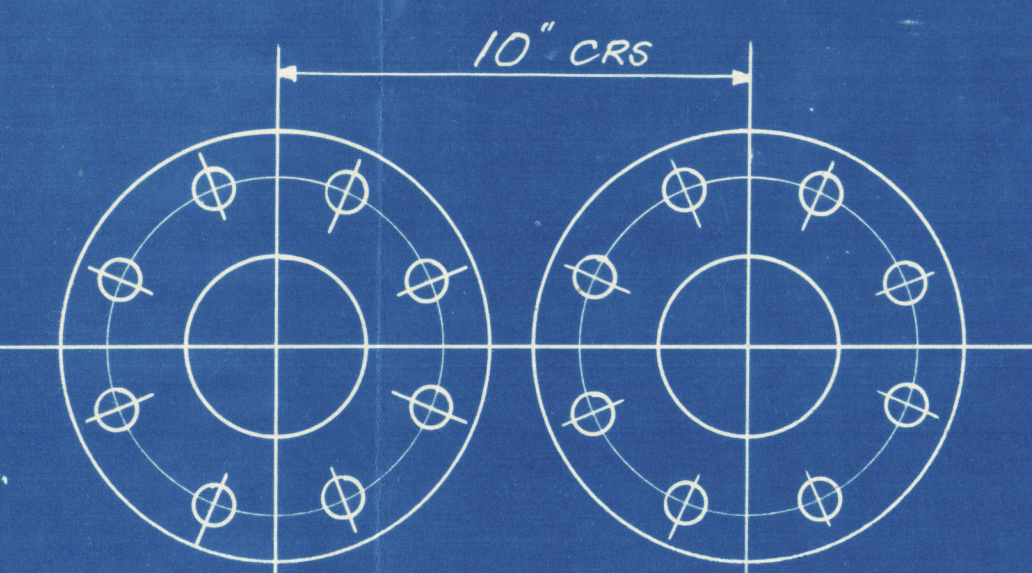
PER BOILER  
1-OFF RIGHT HAND  
1-OFF LEFT HAND

SURVEYOR'S STAMP  
HERE



NOTES

SIDES OF HEADERS TO BE ROUGH MACHINED, EXCEPT WHERE FACED FOR CS. FLANGE, ELBOW & BASE PLATES.  
ELEMENT HOLES & ANGLES MAKE "HANDING".  
EACH HEADER TO HAVE "HAND" PAINTED ON (WHITE PAINT) TO DENOTE POSITION IN SMOKE BOX.



LONDON COPY

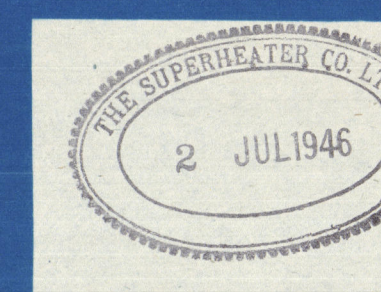
THE SUPERHEATER CO. LTD

TITLE HEADERS

ORDER NOS 21036 M 21036 M REF CKD BALL JOINT M A 11640

S.T. "PORTSMOUTH" 21036 M

S.T. "DUNTON" 21036 M



LONDON COPY

004135-004144-0087

G-OFF

SCALE  
3" ONE FOOT AS MARKED  
OWN T.C.D.  
1/10/46



LONDON COPY

004135-004144-0087



© 2020

Lloyd's Register  
Foundation



LONDON COPY.

004135-004144-0027



© 2020

Lloyd's Register  
Foundation