

REVISION	REMARKS
A	BLU INK VALUE ADDED TO DRG. FOR 21040M (S.T. DUNKERY)

IMPORTANT.
FOR BOILERS FITTED WITH "BALL JOINT" ELEMENTS.

WHEN JOINT IS TO BE MADE
"BALL ENDS" MUST BE PAINTED
WITH APEXIOR NO.3.

PROTECTION ON ELEMENT BALL ENDS MUST
NOT BE REMOVED UNTIL ELEMENT IS IN
POSITION AND JOINT READY TO BE MADE.

BOLTS
OR
BEFORE THE NUTS ARE SCREWED UP, THE THREADS
SHOULD BE THOROUGHLY GREASED WITH A MIXTURE
OF SUPERHEATED STEAM OIL & GRAPHITE.

LONDON COPY

3 1/2" INT. DIA. STEAM PIPE CONNECTIONS
TO HEADERS - NOT SUPPLIED BY
THE SUPERHEATER CO. LTD.

CAST STEEL ELBOW
FORGED STEEL HEADER

EACH ELEMENT CAN BE
WITH DRAWN INDEPENDENTLY.

18 LEFT HAND ELEMENTS

18 RIGHT HAND ELEMENTS

LEFT HAND HEADER

RIGHT HAND HEADER

EACH SMOKE-BOX TO BE
PROVIDED WITH A SOOT DOOR

RETARDERS TO BE
FITTED IN ALL SMOKE-TUBES
WHICH DO NOT CONTAIN
SUPERHEATER ELEMENTS.

"BALL JOINT" TYPE	ORDER NO.	"R.B." TYPE	ORDER NO.
3/4" "DUNTON."	21036M	3/4" "YESTER."	21031M
3/4" "PORTSDOWN."	" M	3/4" "DUNKERY."	21040M

Now
"CAPE CLEVELAND."

NUMBER OF BOILERS ONE PER SHIP (COAL FIRED - FORCED DRAUGHT.)

WORKING PRESSURE = 220 LBS PER SQ. IN.

GRATE AREA = 63 3/4 SQ. FT.

HEATING SURFACE = 2358 SQ. FT.

APPROX SUPERHEATED SURFACE = 960 SQ. FT.
CALCULATED

TO PASS LLOYDS SURVEY

TEST PRESSURE 660 LBS PER SQ. INCH

LONDON COPY.

RETURN BENDS INTEGRALLY FORGED WITH PIPES
(MELESCO MAKE)

APPROX 8'-1 3/4" OVER LONGEST ELEMENTS

7'-2" OVER TUBE PLATES

11'-0" LONG

219 PLAIN TUBES 3 1/4" EXT. DIA. x 8 W.G. THICK

60 STAY " 3 1/4" " " x 5/16" THICK

31 " " 3 1/4" " " x 3/8" "

8 " " 3 1/4" " " x 7/16" "

318 TOTAL TUBES PER BOILER.

HEADER BASE PLATES TAPPED 3/4" GAS THREADS TO RECEIVE DRAIN PIPES

3/4" DRAIN PIPES - TEE PIECE
ARE NOT SUPPLIED BY THE SUPERHEATER CO. LTD.
DRAIN PIPES TO BE SECURED TO SURVEYOR'S SATISFACTION.

SOOT BLOWER VALVE SUPPLIED FOR S.T. "DUNKERY" - ONLY.
POSITION TO SUIT FURNACE FRONT.

FLEXIBLE HOSE FOR USE WITH SOOT LANCE
TO BE ATTACHED TO "SUPERHEATED" DRAIN VALVE
FOR SOOT-BLOWING PURPOSES, WHEN
"SOOT BLOWER VALVE IS NOT FITTED."

SCREWED 3/4" GAS THREADS FOR DRAIN CONNECTIONS.

4 " MELESCO" BALL TYPE DRAIN VALVES PER BOILER
SUPPLIED BY THE SUPERHEATER CO. LTD. AND MUST
BE FITTED BEFORE STARTING UP INSTALLATION.

FLANGE 4 3/4" DIA x 5/8" THICK.

4 HOLES 1 1/16" DIA FOR 5/8" BOLTS ON 3 1/4" DIA P.C. (EQUALLY SPACED)

LONDON COPY.

HEADER FLANGES 8 3/4" DIA x 1 1/8" THICK
8 HOLES 1 3/16" DIA FOR 3/4" BOLTS
ON 7" DIA. P.C.

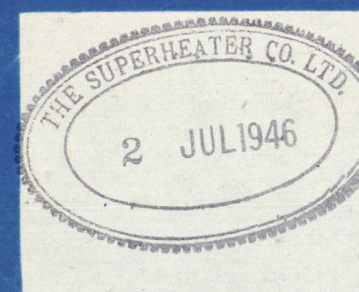
SCALE
1" = ONE FOOT
DWN TO TC
11/11/46

THE DESIGN SHOWN ON THIS DRAWING
IS PROTECTED BY PATENTS
OWNED AND CONTROLLED BY
THE SUPERHEATER CO. LTD.

Arrangement of Superheater
FOR
"MELESCO" "BALL JOINT" OR "R.B." TYPES

REF	CHKD	DRAWING NO.
21031	21/11/46	MN14140A

"HILL" CLASS TRAWLERS



2 & 6 off 004755 004744-00810

LONDON COPY.

004135-004144-0086



© 2020

Lloyd's Register
Foundation

LONDON COPY

004135-004144-0086



© 2020

Lloyd's Register
Foundation