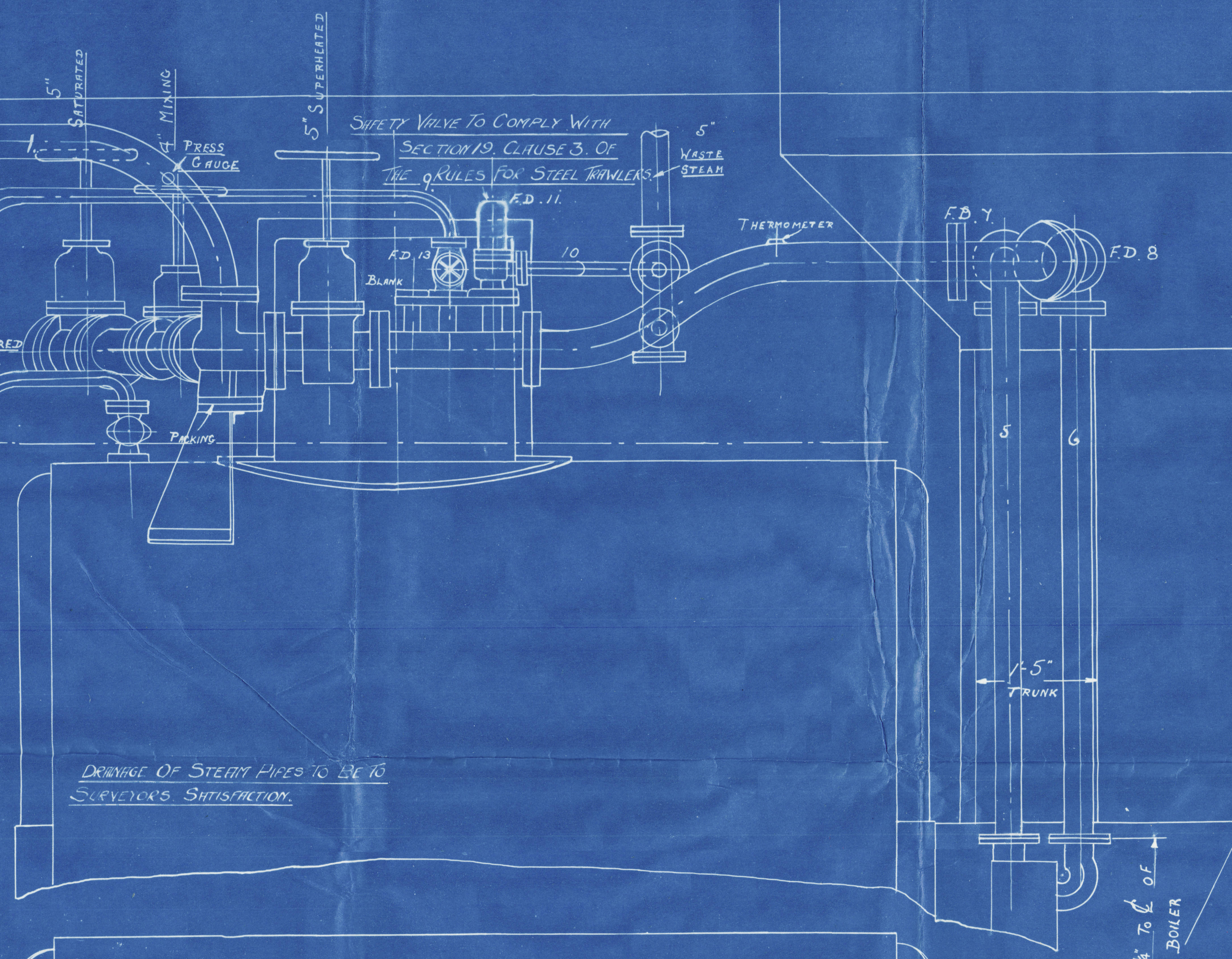
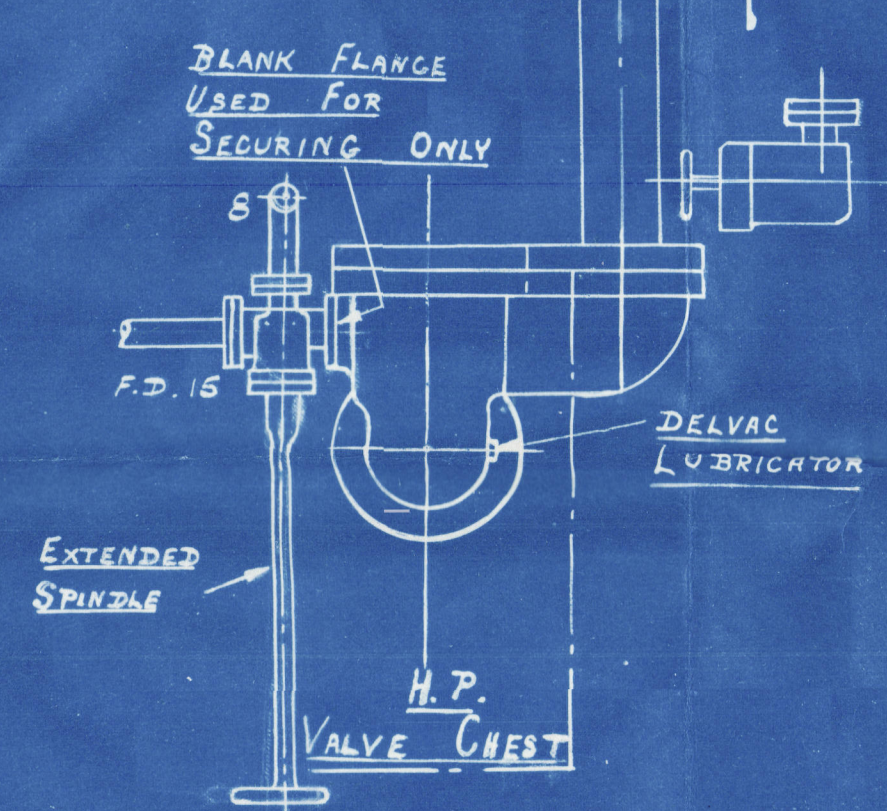
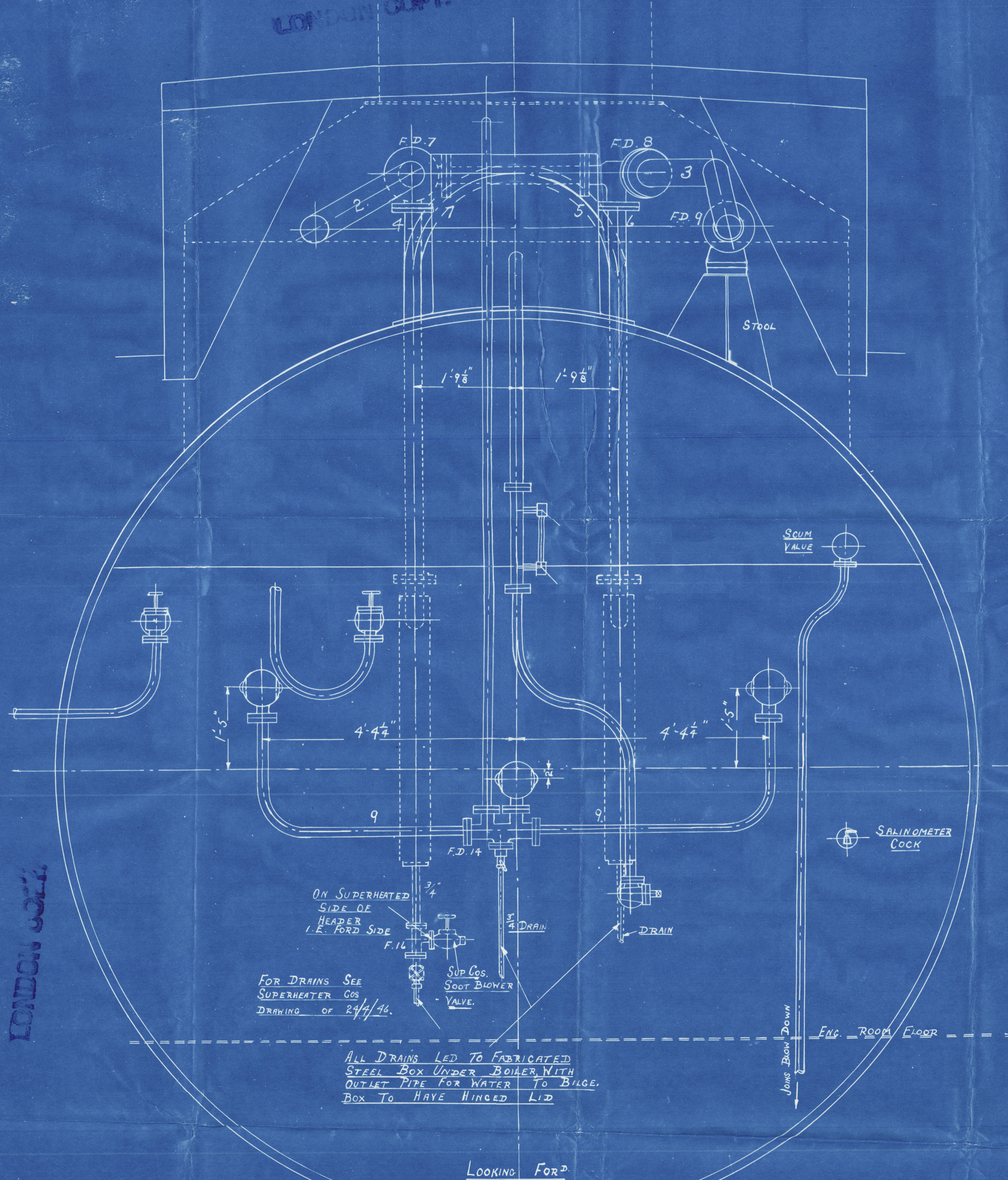


LONDON COPY.

LONDON COPY.

LONDON COPY.



ALL FITTINGS SUBJECTED TO SUPERHEATED STEAM TO BE OF STEEL OR OTHER APPROVED MATERIAL, TO LLOYD'S TESTS AND REQUIREMENTS.

LONDON COPY.

LONDON COPY.

LIST OF PIPES.

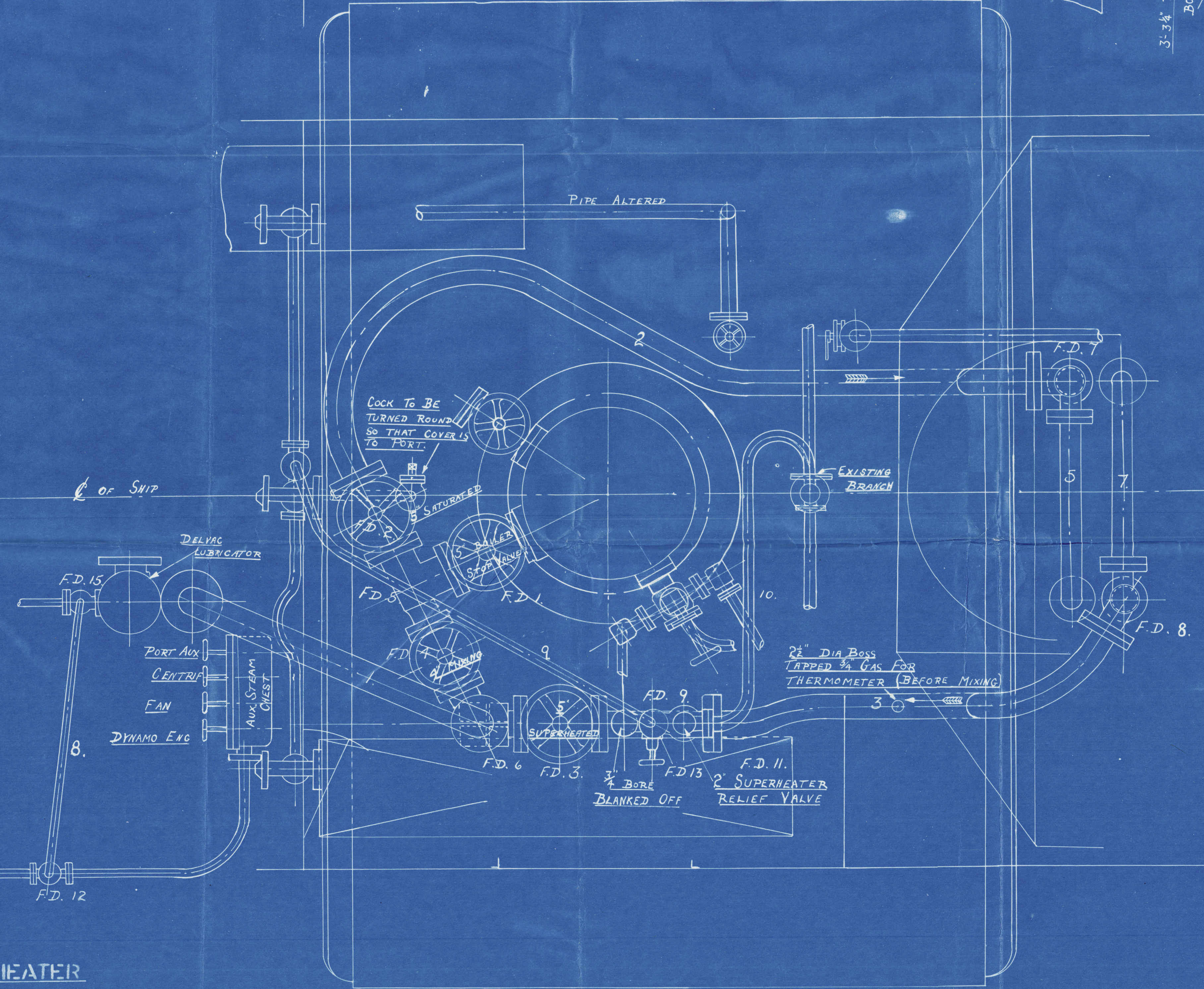
No.	Bore	W.G.	MAT.	REMARKS	DESCRIPTION
1	5"	1/4"	STEEL	NEW	MAIN STEAM
2	5"	1/4"	"	"	SATURATED STEAM TO HEADERS
3	5"	1/4"	"	"	SUPERHEATED STEAM FROM HEADERS
4	3 1/2"	1/4"	"	"	SATURATED STEAM TO PORT HEADER
5	3 1/2"	1/4"	"	"	SATURATED CROSS PIPE
6	3 1/2"	1/4"	"	"	SUPERHEATED STEAM FROM STARBOARD HEADER
7	3 1/2"	1/4"	"	"	SUPERHEATED CROSS PIPE
8	1 1/4"	1/2"	COPPER	"	SAT. STEAM TO IMPULSE VALVE & REV. ENG
9	1 1/2"	"	STEEL	"	SUPERHEATED STEAM TO CYLINDER BLOWERS
10	2"	1/4"	COPPER	"	SUPERHEATED SAFETY VALVE TO ATMOS.

S.T. "PORTSDOWN". S.T. "DUNCTON".

ALTERATIONS TO PIPE WORK FOR SUPERHEATER

CONVERSION.

SCALE 1"=1FOOT.



6/9/46.

LONDON COPY.

LONDON COPY.

LONDON COPY.

LONDON COPY.

HULL

1/2. "Junction" & "Portsmouth" ^{ex} "Sollum". Licence No. 12498.

alterations to Pipe Work for
Superheater Conversion.

LONDON COPY.

004135-004144-0084

LONDON COPY.



© 2020

Lloyd's Register
Foundation

HULL

1/2s. "Dunston" & "Portsmouth" ^{ex} "Sollum". Liv. rept No. 124981.

alterations to Pipe Work for

Superheater Conversion.



© 2020

Lloyd's Register
Foundation

004135-004144-0084