

## Lloyd's Register of Shipping.

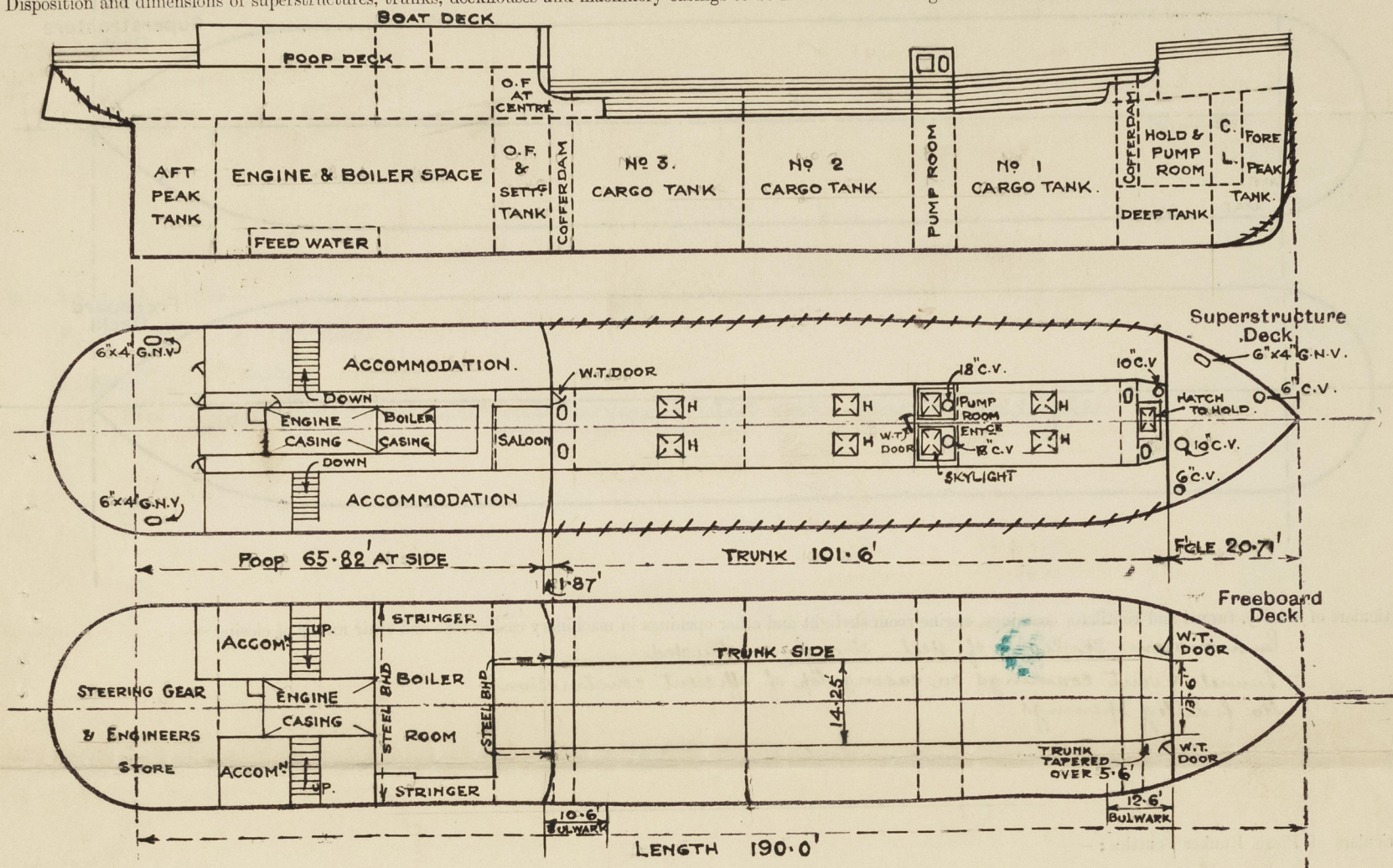
Index No.  
(For London Office only).SURVEYS FOR FREEBOARD.  
(CONDITIONS OF ASSIGNMENT)

RETAIN

Ship's Name **B.P. TRANSPORTER**  
**"EMPIRE SHETLAND"**  
 Official Number **169433**  
 Nationality and Port of Registry **British - Glasgow** **LONDON**

Port of Survey **Glasgow**  
 Surveyor's Signature **J. W. Bolwell**  
 Date of Survey **whilst building**

Disposition and dimensions of superstructures, trunks, deckhouses and machinery casings to be inserted in the diagrams and tabular statement:—



Particulars of Superstructures, Trunks, Casings, Deckhouses.

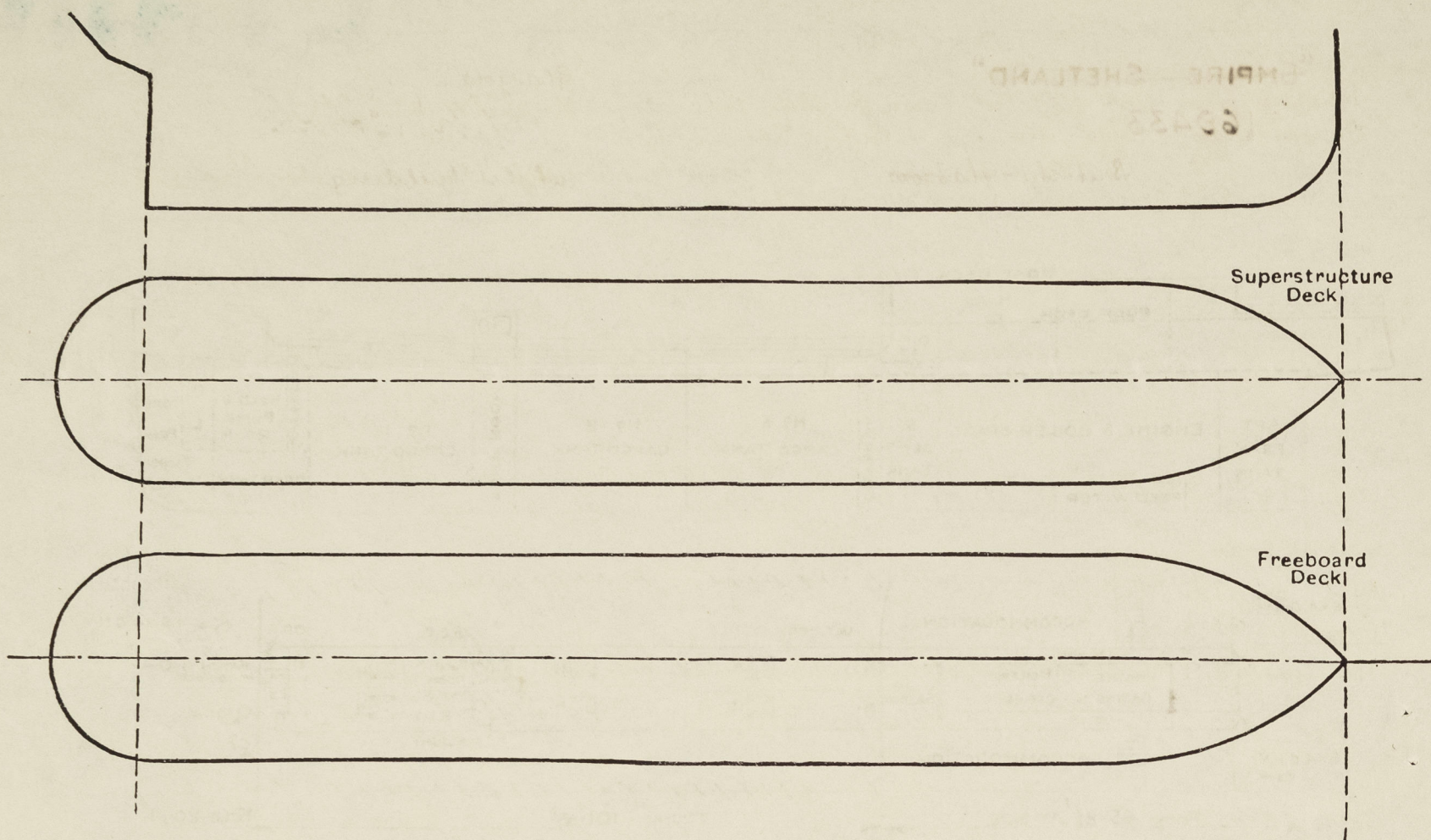
	Coaming	Plating	Stiffeners	Spacing	End Attachments of Stiffeners	Size of Openings	Height of Sills	Height of Casings
Poop Bulkhead AT SIDES OF TRUNK AT CENTRE ABOVE	42" x 35	.35 .35	7x3 x .36 B.A. 5x3 x .38 O.A.	28 1/2"	BRACKETED T+B. BRACKETED TOP UNATTACHED AT BOTTOM	1P. 1S. 1'-6" x 1'-3"	12"	7'-6"
Raised Quarter Deck Bulkhead								
Bridge, After Bulkhead								
Bridge, Forward Bulkhead								
Forecastle Bulkhead	✓	.30	3 x 3 x .34	25"	NONE	1P. 1S. 4'-6" x 2'-0"	18"	7'-0" AT BHD 6'-6" AT STEM
Trunk, Aft	.35	✓	.35 FLANGED WEBS SP. 7'-6" x 9'-4 1/2"	25"	WEBS 2R. WITH INTERMEDIATE BKTS .35 THICK TO TRANSVERSES	✓	✓	3'-6"
Trunk, Forward		.35 + .40	11 x 35 FLP. 7 x 3 x .33 B.A. LONG	7'-6" + 9'-4 1/2" 28 1/2"	BRACKETED	SEE PARTICULARS OF HATCHWAYS	✓	
Exposed Machinery Casings on Freeboard or Raised Quarter Decks								
Exposed Machinery Casings on Superstructure Decks								
Machinery Casings within Superstructures not fitted with Class I Closing Appliances								
Deckhouses on Flush Deck Ships								

Particulars of Closing Appliances (state if capable of being manipulated from both sides).

Poop Bulkhead	STEEL PLATE COVERS SECURED BY STUDDED BOLTS SPACED ABOUT 3" APART
Raised Quarter Deck Bulkhead	
Bridge, After Bulkhead	
Bridge, Forward Bulkhead	
Forecastle Bulkhead	STEEL WATERTIGHT DOORS OPERATED FROM BOTH SIDES.
Exposed Machinery Casings on Freeboard or Raised Quarter Decks	
Exposed Machinery Casings on Superstructure Decks	
Machinery Casings within Superstructures not fitted with Class I Closing Appliances	
Deckhouses on Flush Deck Ships	

# PARTICULARS OF PROTECTION TO OPENINGS, ETC.

The following diagrams should be used to indicate the positions of cargo and coaling hatchways, gangway, cargo and coaling ports, ventilators, companionways, etc., which would affect the seaworthiness of the ship:—



Particulars of fiddle, funnel and ventilator coamings, engine room skylight and other openings in machinery casing tops and their means of closing:—

Engine room skylight of steel, strongly constructed  
Funnel & vent coamings on casing top of efficient construction  
No fiddle openings.

Particulars of Flush Bunker Scuttles:—

None.

Particulars of Companionways:—To accommodation in poop and to engine + boiler space in substantial steel deckhouse on poop deck. Openings in after end of house 4'-11" x 2'-0"; solid wood doors, operated from both sides (2P + 1S)  
Opening in forward end of house (port side) 4'-11" x 2'-0"; steel hinged W.T. door operated from both sides.  
Sills to after openings 18". Sill to forward opening 18". Main pump room entrance on trunk top of steel, strongly constructed. Opening in after end 4'-6" x 2'-0"; sill 18". Steel hinged W.T. door, operated from both sides.

Particulars of Ventilators in exposed positions on freeboard and superstructure decks:—

Fore Deck 2 @ 6" C.V. to Fore Coamings 36" x 30.  
1 @ 10" C.V. to Fore Hold Coaming 48" x 32 with supporting brackets.  
1 @ 6" x 4" G.N.V. to Fore 18" high to opening (C.I.)  
Trunk Top 1 @ 10" C.V. to Fore Hold Coaming 48" x 32" with supporting bracket to fore-castle bulkhead.  
2 @ 6" x 4" G.N.V. to Fore Bulkhead 18" high to opening (C.I.)  
Main Pump Room Entrance Top 2 @ 18" C.V. to Pump Room. Coaming 34" x 40"  
Poop Deck 2 @ 6" x 4" G.N.V. to Steering Gear Space 18" high to opening (C.I.)  
All cowd vents to Rule requirements & fitted with wood plugs and canvas covers.

Particulars of Air Pipes in exposed positions on freeboard, raised quarter, or superstructure decks:—

Fore Deck 1 @ 4" M.I. to fore peak tank 18" high.  
Trunk Top 2 @ 4" M.I. to forward deep tank 18" high.  
2 @ 3" M.I. to after cofferdam 18" high  
Poop Deck 2 @ 2" M.I. to F.W. Tanks in Poop 22" high  
2 @ 2 1/2" M.I. to after peak tank 22" high.  
Poop Front Bulkhead 2 @ 3" M.I. to Oil Fuel Bunkers 4'-3" high above Poop Deck, secured to deckhouse front.  
Upper Deck 1 @ 3" M.I. to Settling Tank, 6'-0" high, secured to poop front bulkhead.

All air pipes fitted with gauges.

B.P. TRANSPORTER.

Particulars of Gangway Cargo and Coaling Ports:—

None.

Particulars of Scuppers and Sanitary Discharge Pipes:—

Scuppers from poop deck led through ships side above freeboard deck.  
Scuppers from upper deck led to Engine Room bilges.  
Discharges from W.C.'s & washplaces on poop deck led through ships side above freeboard deck and fitted with brass storm valves at outlets.

Particulars of Side Scuttles:—

Poop 9" and 10" dia.  
Fore-castle 9" dia.  
All sidelights of substantial construction fitted with hinged deadlights.

Vertical distance of Sill of lowest Side Scuttle above top of keel None below freeboard deck.

Particulars of Guard Rails:—

Fore Deck Open rails, 3'-6" high with 3 rods + stanchions 4'-0" to 5'-6" apart.  
Trunk Top " " " " " 2 " " " 4'-0" to 4'-6" "  
Upper Deck " " " " " 3 " " " 4'-0" to 4'-6" "  
Poop Deck " " " " " 3 " " " 4'-6"

Particulars of Gangways, Lifelines, etc.:—

None.

## Particulars of Freeing Arrangements.

	Length of Bulwark	Height of Bulwark	Size of Freeing Ports	Number each side	Area each side	Rule area each side
After <del>Well</del> Bulwark..	10'-6"	3'-7"	mooring pipe 10" x 8" freeing port 24" x 8"	1 1	.45 sq' 1.33 sq'	
Forward <del>Well</del> Bulwark..	12'-6"	3'-7"	mooring pipe 10" x 8" freeing port 24" x 4"	1 1	.45 sq' .67 sq'	

State position of each freeing port ... (After ~~Well~~ Bulwark 2'-0" from poop front; 1/2" above deck edge  
(F. and A. position and height above deck edge) (Forward ~~Well~~ Bulwark 5'-0" from fore-castle end; 1/2" above deck edge.)

State whether the freeing ports are fitted with shutters, bars, or rails, and give particulars of such:— ✓

Additional area where sheer is less than standard.

PARTICULARS OF PROTECTION TO OPENINGS, ETC.

TRUNK TOP. HATCHWAYS ON <del>FREEBOARD</del> AND SUPERSTRUCTURE DECKS.									
Description of Hatchway	...	...	To after cofferdam	To main oil tank	To forward cofferdam	To forward hold	To forward hold Small hatch in cargo hatch	To pump room in fore hold	
Dimensions of Hatchway	...	...	1'-11" x 1'-3" 1P 1S	2'-6" x 2'-6" 3P 3S.	2'-0" x 2'-0" 1P.	3'-9" x 5'-0"	2'-0" x 2'-0"	1'-11" x 1'-3" 1S.	
COAMINGS	{	Height above Deck	...	...	...	...	...	...	...
		Thickness	...	...	...	...	...	...	...
		Sides	...	...	...	...	...	...	...
		Ends	...	...	...	...	...	...	...
HATCH BEAMS	{	Stiffeners	...	...	...	...	...	...	...
		Brackets, Stays	...	...	...	...	...	...	...
		Number	...	...	...	...	...	...	...
		Spacing	...	...	...	...	...	...	...
FORE AND AFTERS	{	Scantling and Sketch	...	...	...	...	...	...	...
		Bearing Surface	...	...	...	...	...	...	...
		Number	...	...	...	...	...	...	...
		Spacing	...	...	...	...	...	...	...
HATCH COVERS	{	Unsupported Lengths	...	...	...	...	...	...	...
		Scantling* and Sketch	...	...	...	...	...	...	...
		Bearing Surface	...	...	...	...	...	...	...
		Material	...	...	...	...	...	...	...
HATCH COVERS	{	Thickness	...	...	...	...	...	...	...
		How fitted	...	...	...	...	...	...	...
		Bearing Surface	...	...	...	...	...	...	...
		Spacing of Cleats	...	...	...	...	...	...	...
Number of Tarpaulins	...	...	...	...	...	...	...	...	...
*Are wood fore and afters steel shod at all bearing surfaces? ✓									
Are battens and wedges efficient and in good condition? ✓									
Are tarpaulins in good condition and in accordance with rule requirements? ✓									
Are lashings provided in accordance with rule requirements? ✓									

Particulars of any special features :—

Endorsement at first survey and at surveys for renewal of Certificate :—

The fittings and appliances are in accordance with the particulars shown on this form (or as now modified) and are in good condition.



© 2020

Lloyd's Register  
Foundation