

SINGLE SCREW TANKER
"EMPIRE HARVEST"

LBP 190'-0" x B.MLD 30'-6" DEPTH MLD 14'-0"

MIDSHIP SECTION (AS FITTED)

CLASS LLOYDS 100A1 CARRYING PETROLEUM
IN BULK
LONGITUDINAL FRAMING AT BOTTOM AND AT DECK

SCALE 1/2 INCH = 1 FOOT

NUMERALS
D = 14.0
L x D = 2660
L x (B + D) = 8455
L/D = 13.57

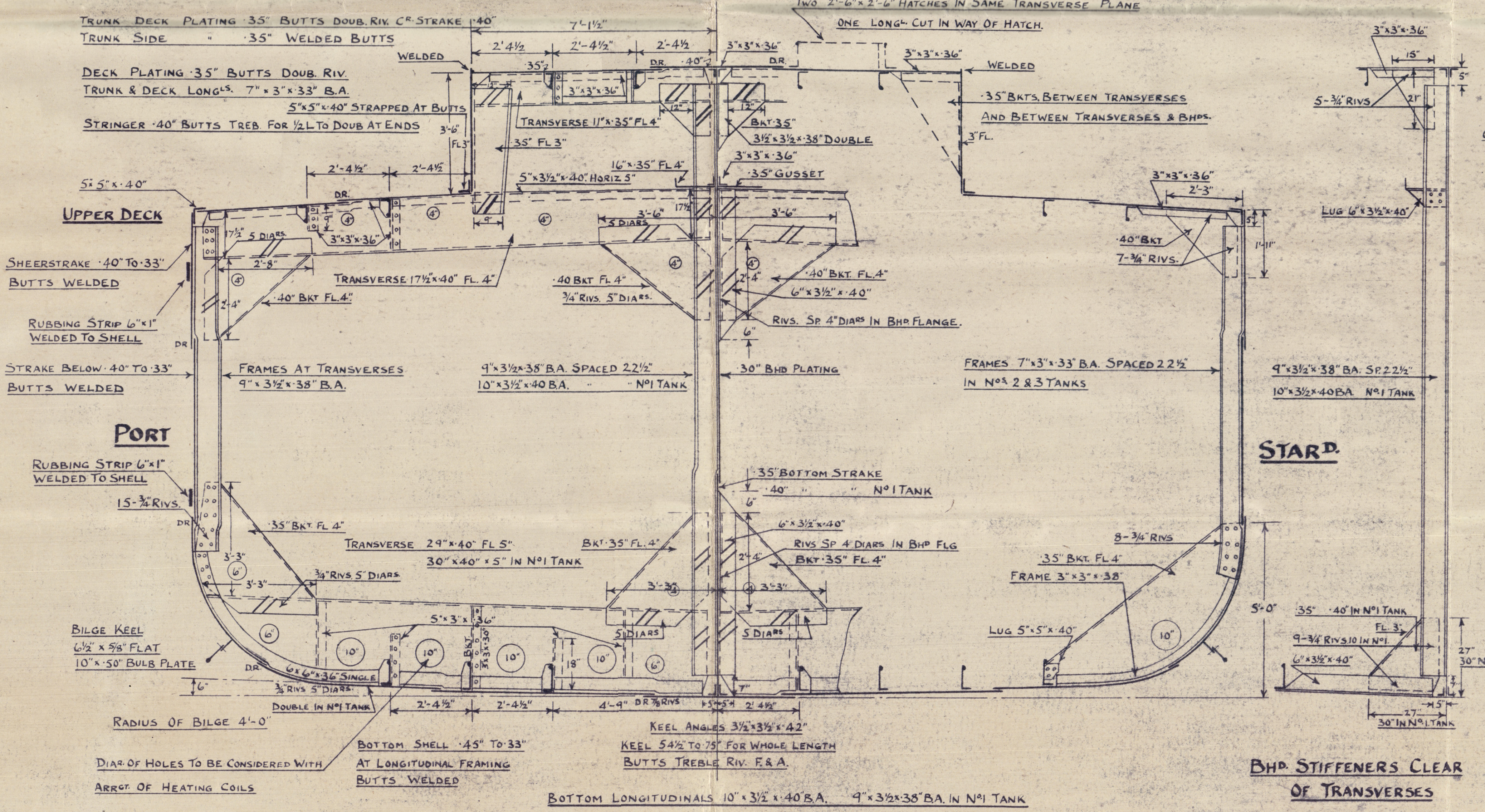
RETAIN

EQUIPMENT NUMERALS		
L x (B + D)	8455	
POOP	67-49 x 7.5 x 7.5	381
POOP	20-49 x 6.75 x 7.5	105
BOAT DR	58-12 x 7.5 x 5	218
DECK HOUSE	16-3 x 7 x 5	57
TRUNK	100-5 x 3.5 x 5	176
		9392

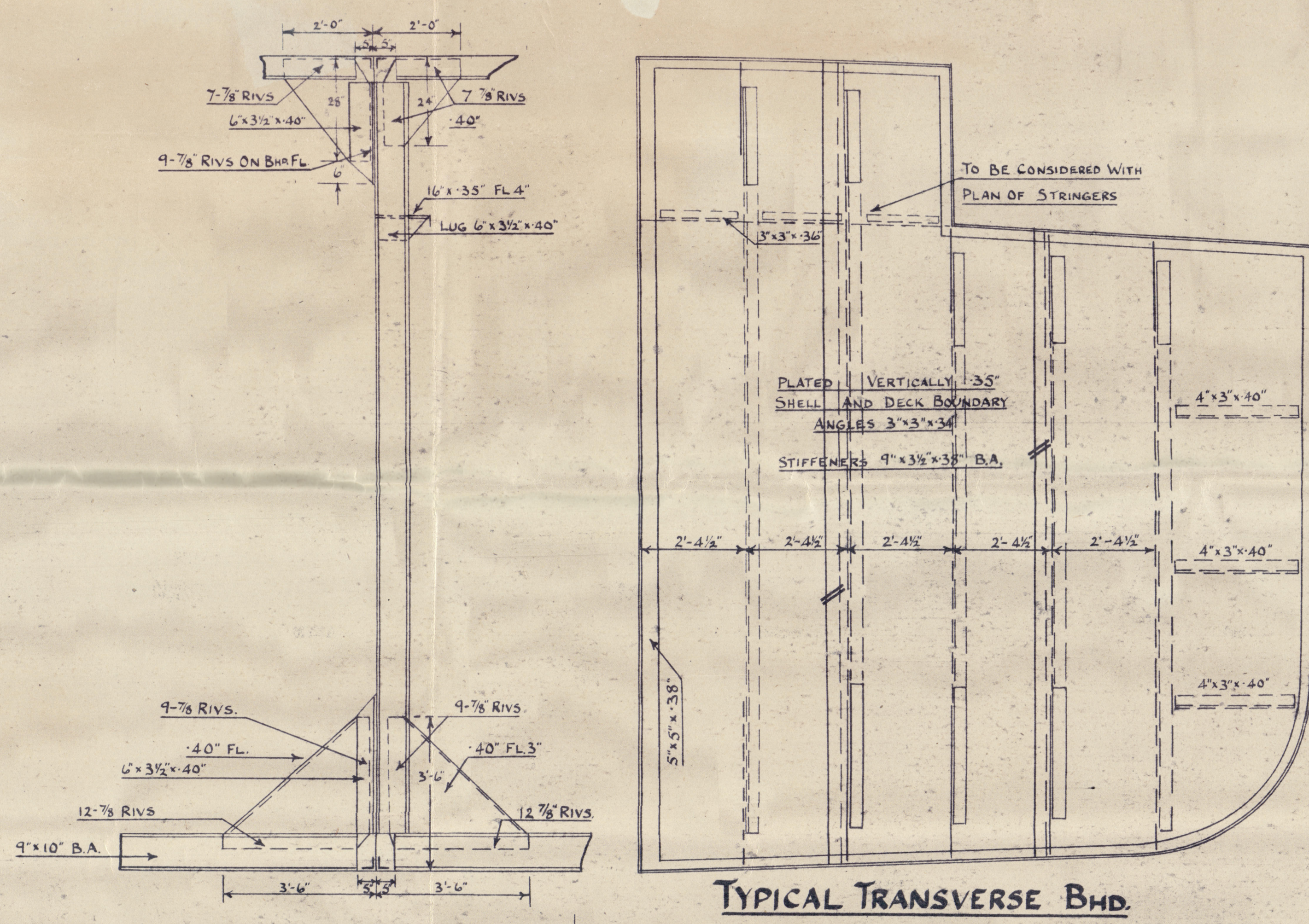
EQUIPMENT		
2 BOWER ANCHORS	STOCKLESS EACH	19 CWTs
1 STREAM	EX STOCK	5 1/4 "
180 FATHOMS	1 1/2" STUD LINK CABLE	
60 "	3/4" 6x12 FLEXIBLE STEEL WIRE	STREAM
90 "	3"	TOW LINE
90 "	2 1/4"	HAWERS
90 "	1 1/2"	WARPS

STEM 6 1/2 x 1 3/8"
FRAME SPACING IN PEAKS 22"
ELSEWHERE 22 1/2"
BULB ANGLES ARE N.B.S.

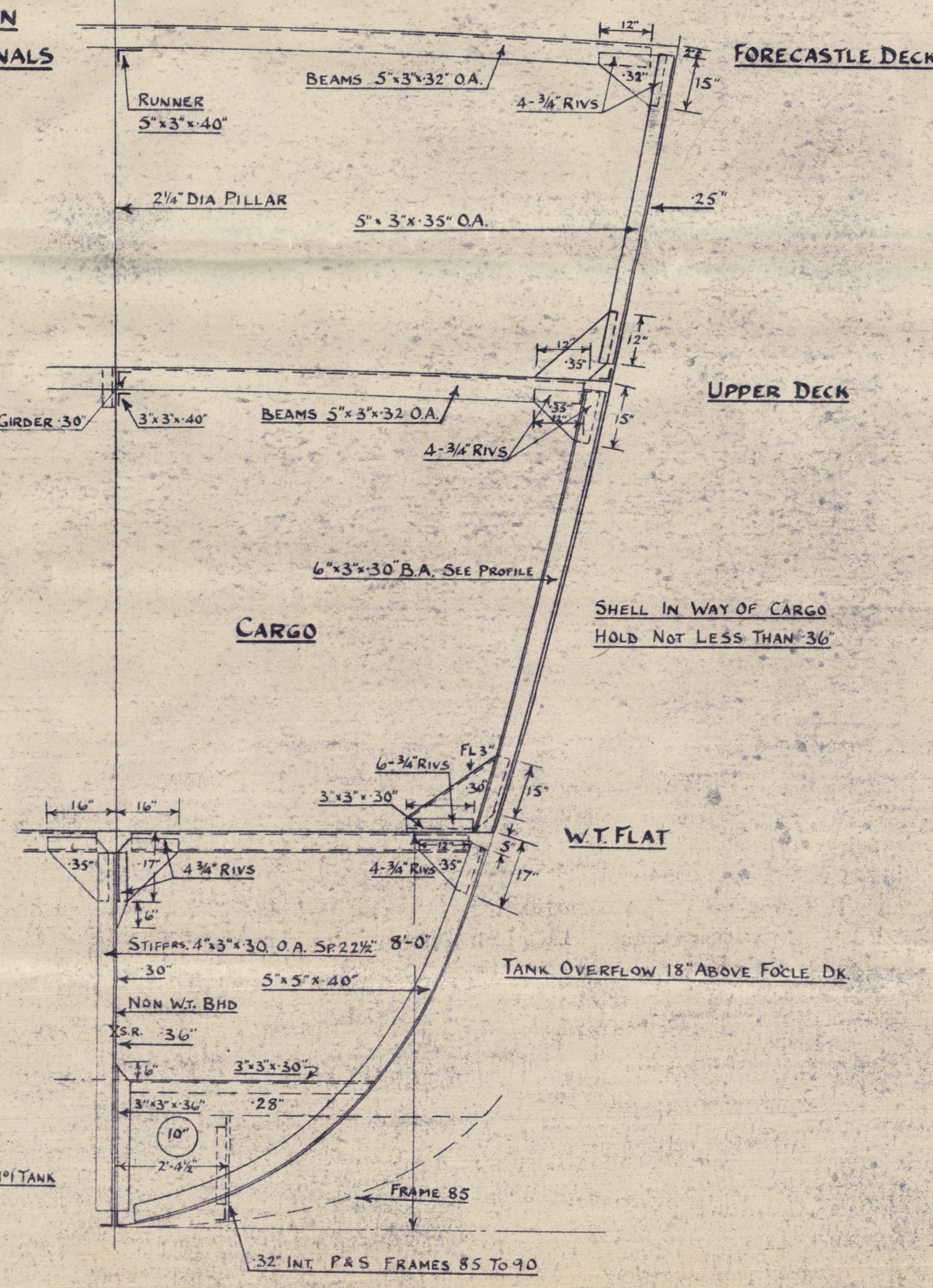
TEST 5'-0" ABOVE CROWN
CAMBER 7 1/2"



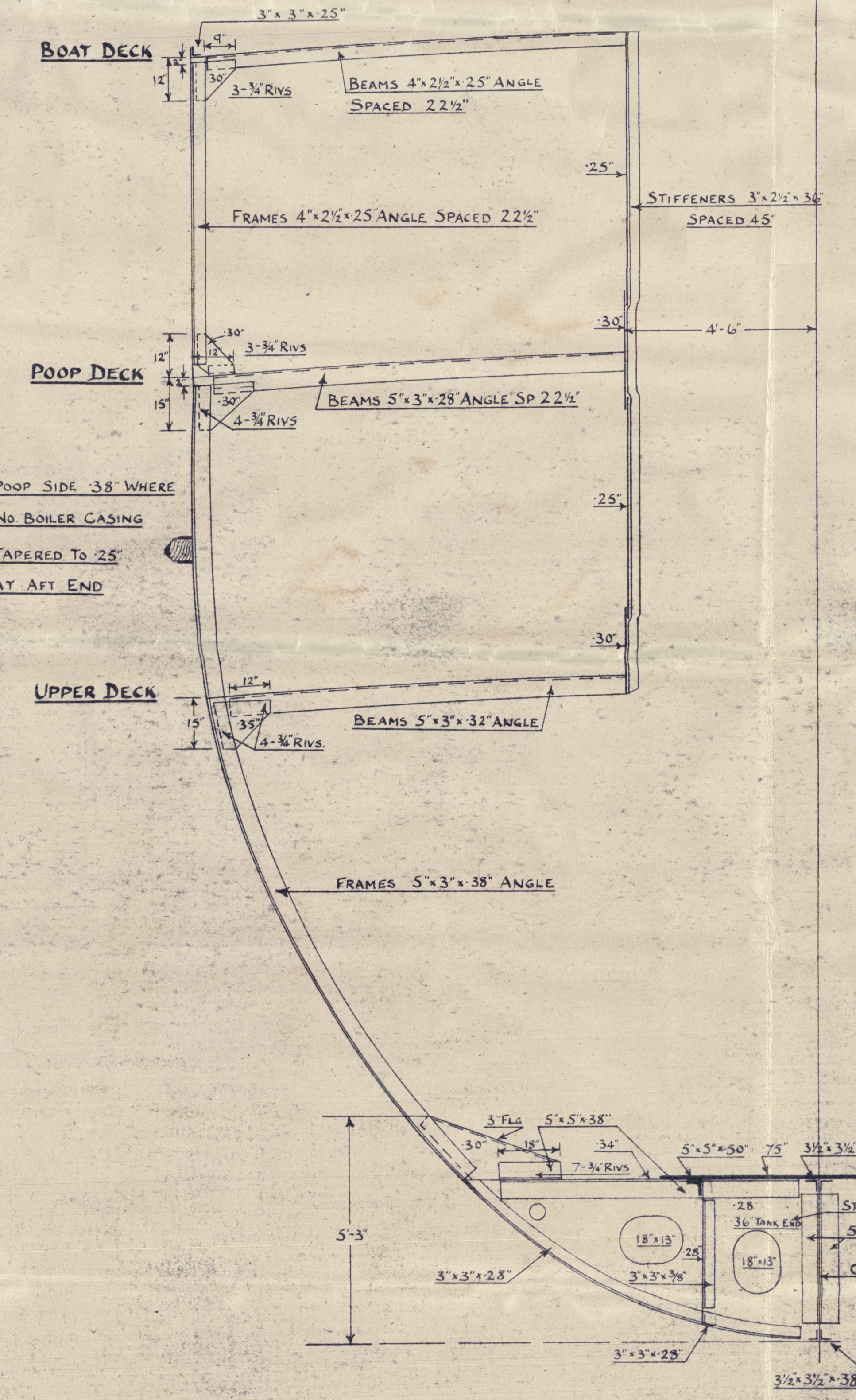
TWO STRAKES OF BOTTOM SHELL NEXT KEEL FROM 1/2 L TO RULE
POSITION OF COLL. BHD INCREASED TO 45" THK



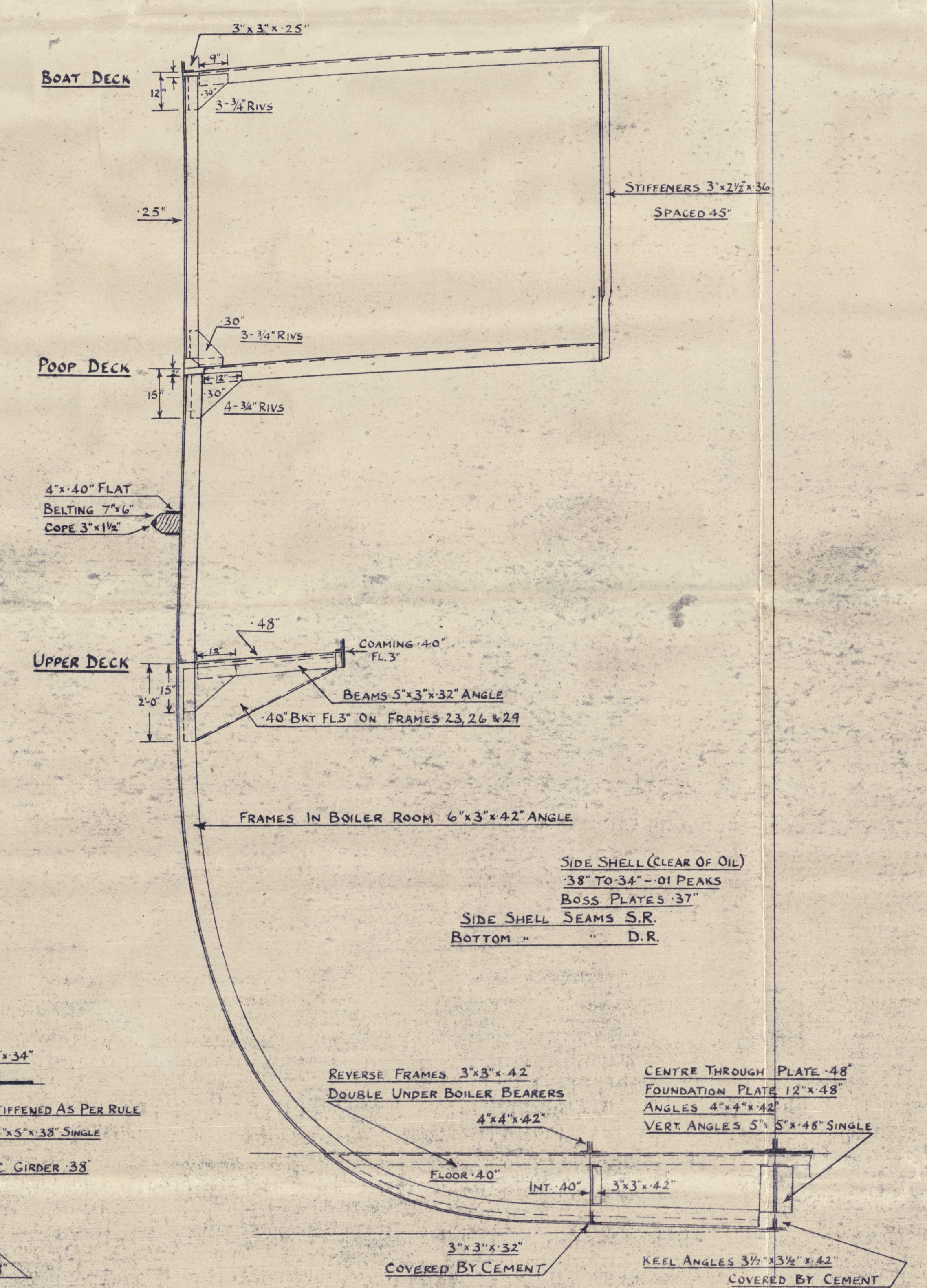
CONNECTION BETWEEN
BHDs AND LONGITUDINALS



SECTION THRO. FWD. TANK FRAME 92



SECTION THRO ENGINE ROOM.



SECTION THRO BOILER ROOM.