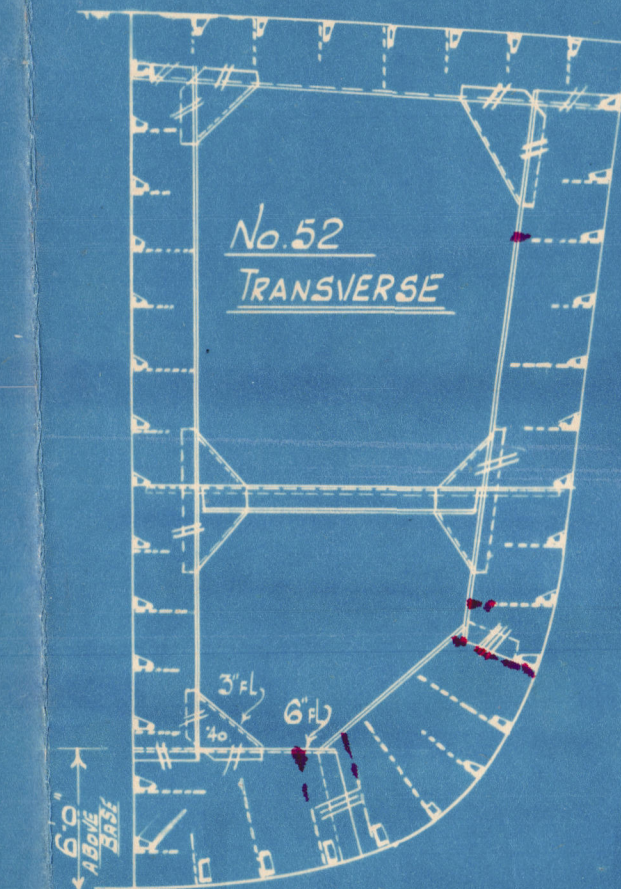
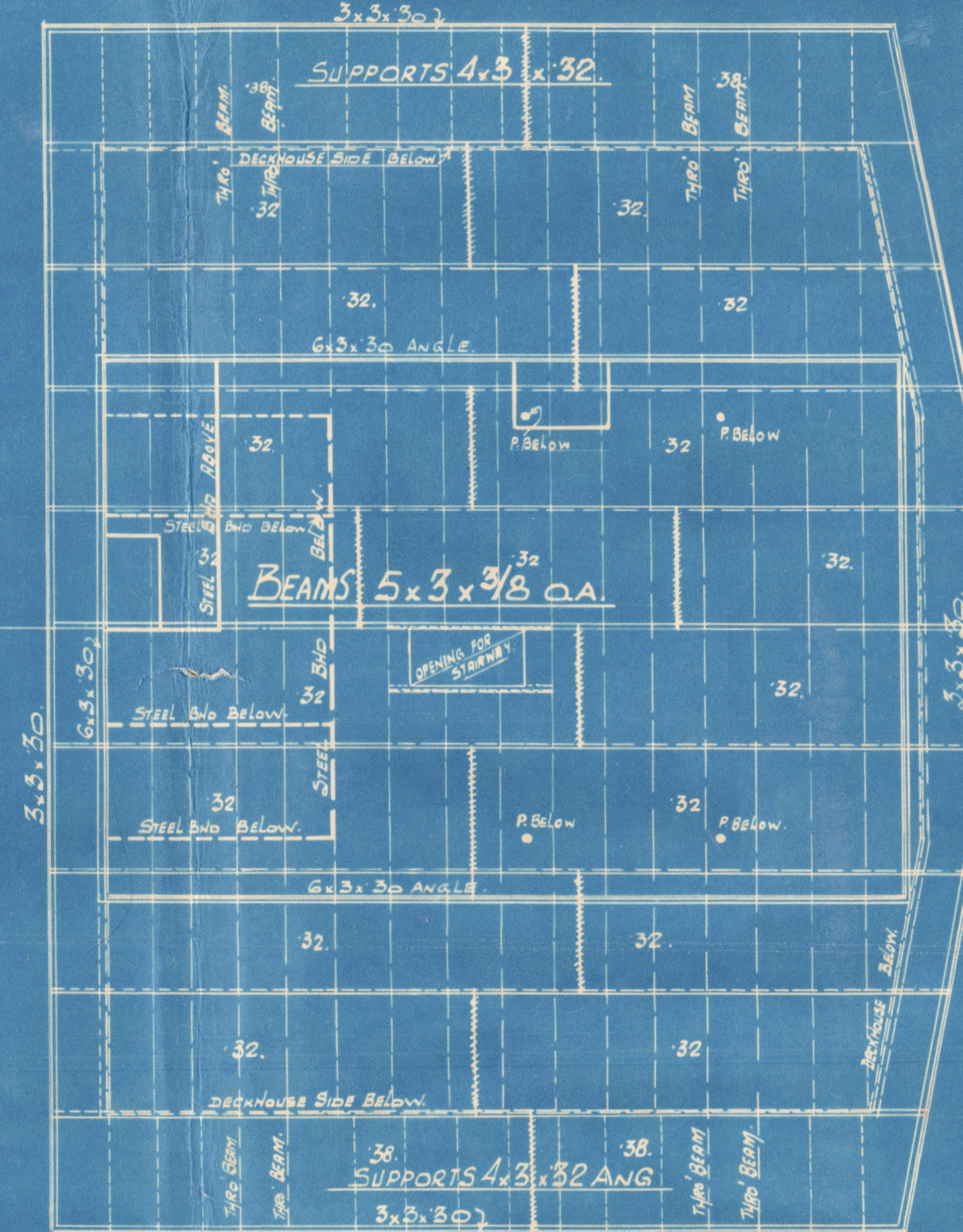


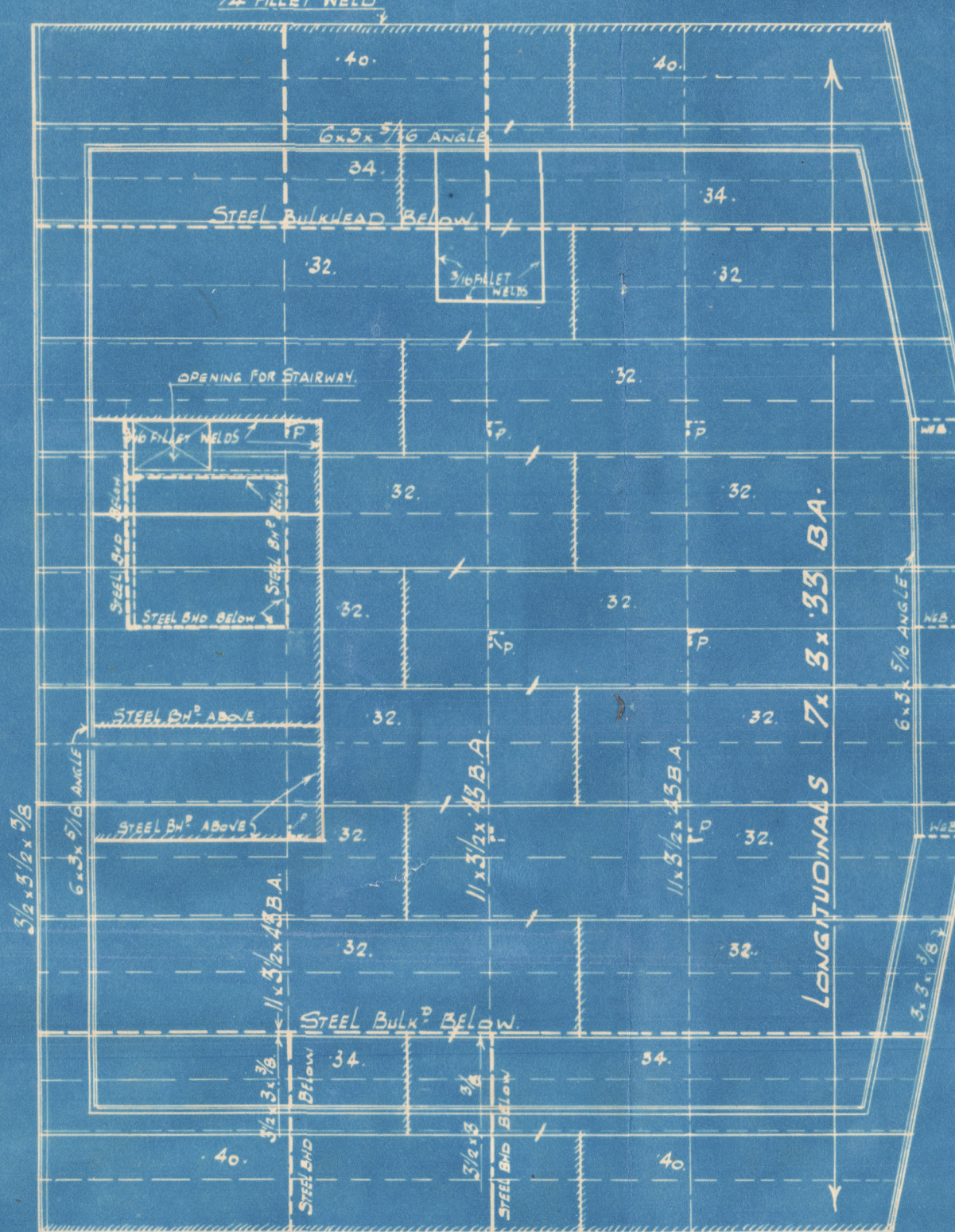
N^o
PROFILE & DECK PLANS.
LENGTH B.P. 465'-0" B.R. M^d 64'-0" DEPTH M^d 35'-6"
TO CLASS 100 A.1. CARRYING PETROLEUM IN BULK.
FIRST N^o 16100. SECOND N^o 45860 b₆ UPPER DK 13-



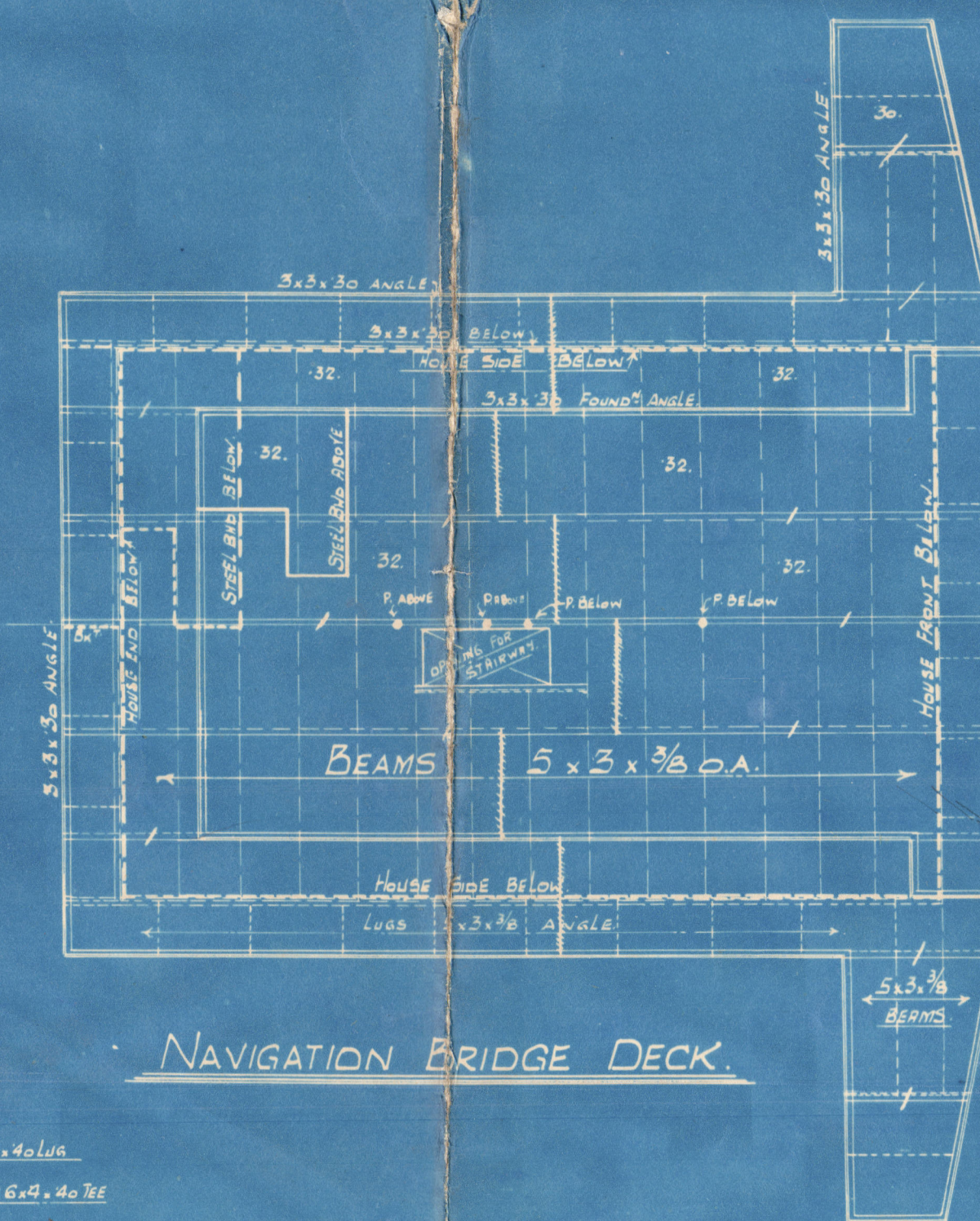
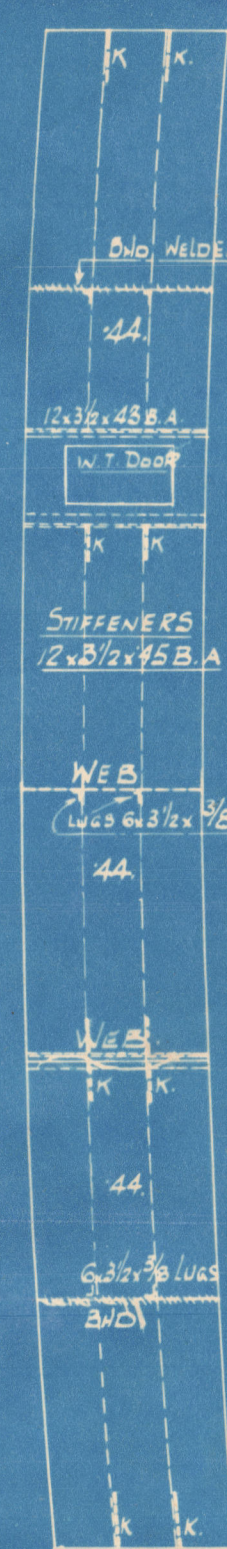
TRANSVERSES IN NO. 1 WING TANKS.



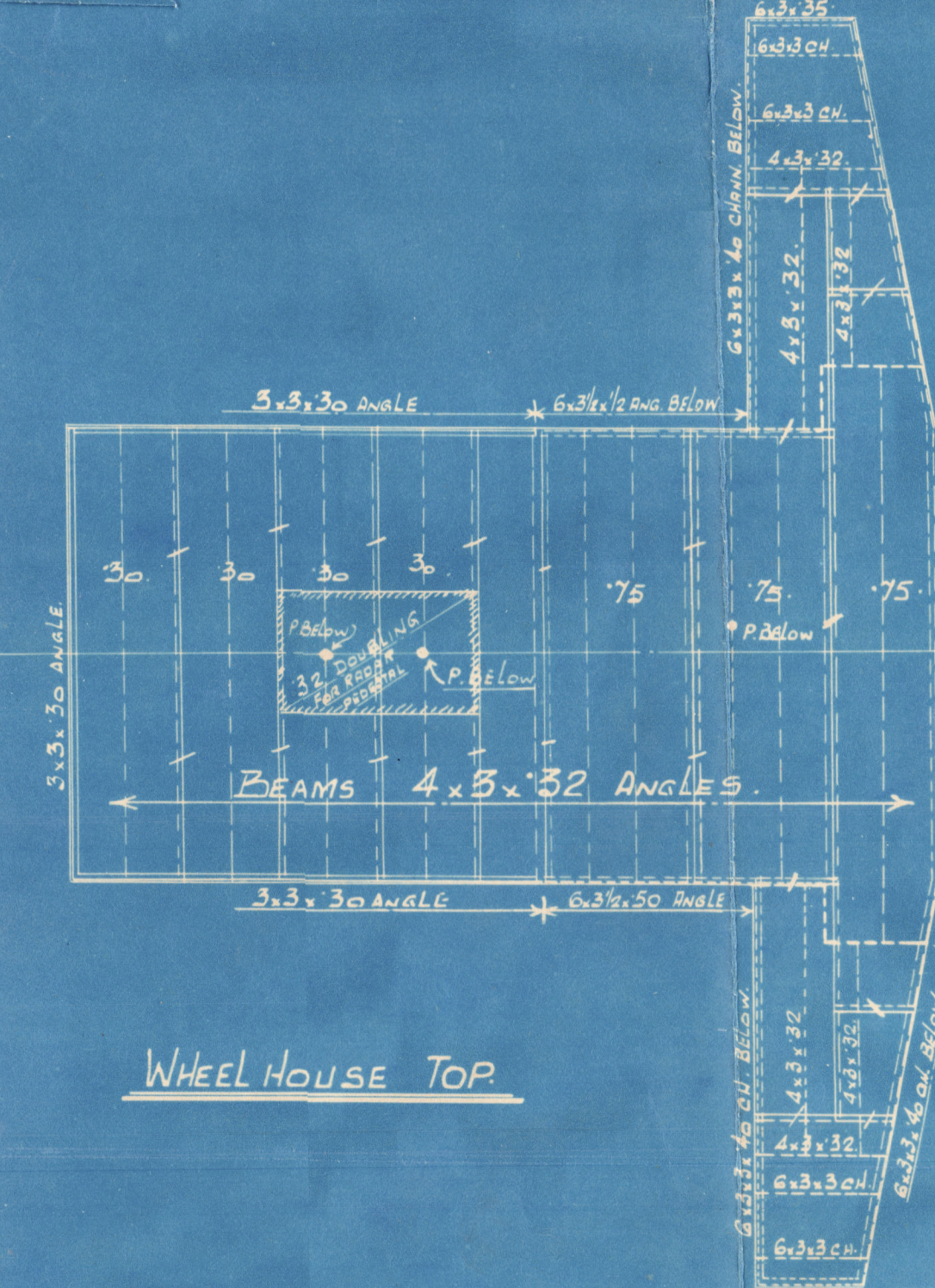
UPPER BRIDGE DECK



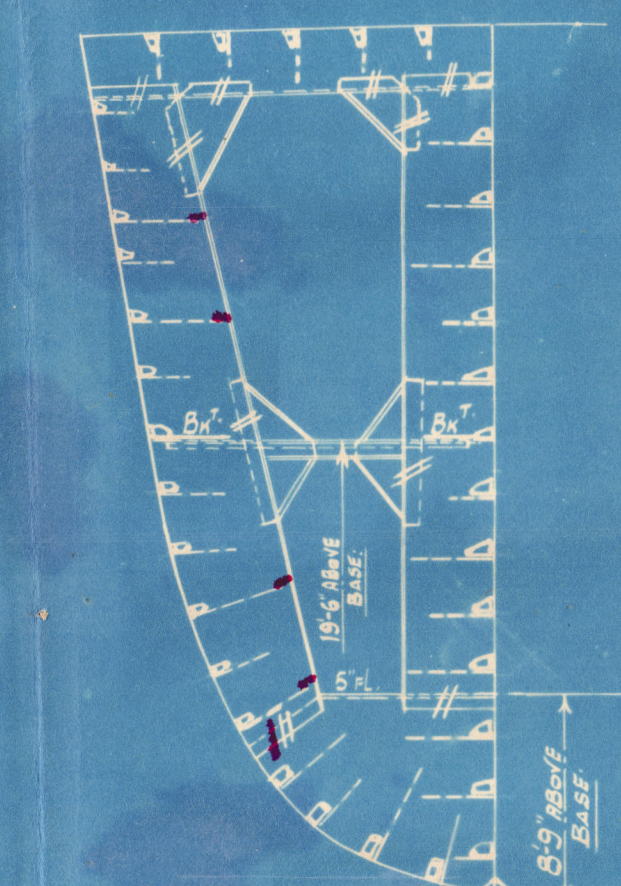
BRIDGE DECK



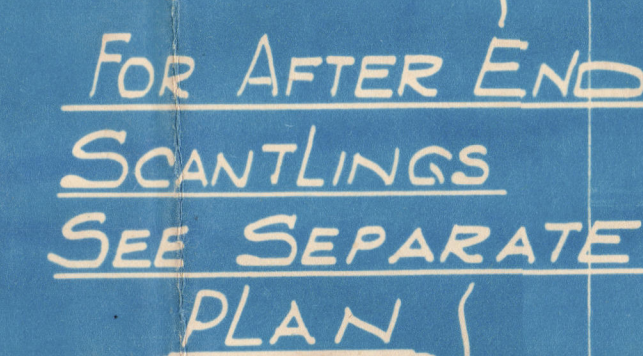
NAVIGATION BRIDGE DECK



WHEEL HOUSE TOP.



TRANSVERSES IN No 6 WING TANKS:



✓ Local Stiffening to Skull Plates
at Wide Spacing to Permit Satisfaction

ROT. NW 1/4
112862

A circular blue ink stamp from 'E. JAMES LANG & SONS, LIMITED' is visible. The stamp contains the handwritten date '25-4-64' in the center and '12/05' at the bottom. The text 'DRAWN TO ORDER' is also faintly visible within the stamp's border.

Sir J. Laing & Sons Ltd,
15 Knot Yarker,
Profile & Deck.

764

'WAVE KNIGHT' *

SUNDERLAND RPT. NO 34481

WAVE LAIRD

SUNDERLAND RPT. NO 34550

12

RETAIN

© 2020

Lloyd's Register
Foundation

004116-004124-0002