

S.S. "PARTHIA" AND S.S. PATRIA

CLASS: GERM. LLOYD $\frac{1}{4}$ 100 $\frac{1}{4}$ [E] WITH FREEBOARD

MATERIAL: STEEL

SCALE 1 = 25.

LENGTH BETWEEN P.P. 382'-4 1/2" 116.55

EXTREME BREADTH ON THE FRAMES 52'-6" 16.00

MOULDED DEPTH UP TO FIRST DECK (SHELTER DECK) 32'-9" 9.98

OUTFIT N° 12330

3 STOCKLESS BOWER ANCHORS AT 2830 KG.
1 STREAM ANCHOR INCL. STOCK " 920 "
1 KEDGE ANCHOR " 460 "
500 MTR. 273 FATHOMS CHAIN WITH STUD 54" $\frac{1}{4}$ = 2 1/2 #
185 " = 100 " STEEL WIRE 114 " = 4 1/2 #
185 " = 100 " " 85 " = 3 3/4 #
185 " = 100 " " 63 " = 2 1/2 #
185 " = 100 " " 63 " = 2 1/2 #

FLEXIBLE STEELWIRE
144 THREADS

B = 16.00	1/4 18" DECK 11.18
H = 9.98	1/8 7.29
25.98 = B + H	DRIFT 1.8% FOR 1/2 L.
116.55	" 1.4% AT ENDS
3078 [B + H] x L	" 0.46%

N° OF THE HATCH	SIZE OF HATCHES	THICKNESS OF COAMINGS		SHIFTING BEAM		N°	SPACE	1ST DECK	2ND DECK	COAMING ANGLE BARS COVER	HATCH COVER
		1ST DECK	2ND DECK	1ST DECK	2ND DECK						
1	16.00M x 27.11	11	10	11	10	3	1.74	600 TO 450	470 TO 310	20 X 15	75
2	16.00M x 27.11	11	10	11	10	3	1.74	600 TO 450	470 TO 310	20 X 15	75
3	16.00M x 27.11	11	10	11	10	3	1.74	600 TO 450	470 TO 310	20 X 15	75
4	16.00M x 27.11	11	10	11	10	3	1.74	600 TO 450	470 TO 310	20 X 15	75
5	16.00M x 27.11	11	10	11	10	3	1.74	600 TO 450	470 TO 310	20 X 15	75

FRAME SPACING 700" $\frac{1}{4}$ ON O. 2L OF THE STEM 700, IN AFTER PEAK 600

FRAMES IN R. & R. FROM FRAME 126 FORWARD 230 X 90 X 11.5 UP TO 1ST DECK
INTERMEDIATE - FRAMES 3 FOR ICE CLASS 170 X 85 X 9.5 EXTRA STRINGER
FRAMES IN HOLD 2 3/4 170 X 85 X 9.5 UP TO 1ST DECK
REVERSED FRAMES 150 X 90 X 10.5 UP TO 2ND DECK
FRAMES IN ENG. & BOILER ROOM 170 X 85 X 9.5 UP TO 1ST DECK
FRAMES IN PEAKS 170 X 85 X 9.5 UP TO 1ST DECK
SINGLE FRAMES AT THE BULKHEADS AS PER TABLE, ZIG-ZAG RIVETED
FRAMES AT THE WEB FRAMES 90 X 75 X 11 SINGLE

FORGINGS

STEM 240 X 75, PROPELLER POST 255 X 190, STERN POST 255 X 190
STERN SOLE-PIECE 350 X 200, RUDDER STOCK, RUDDER PINTLE'S RUDDER PLATE (FRAME)

BULKHEADS PLATING AND STIFFENING

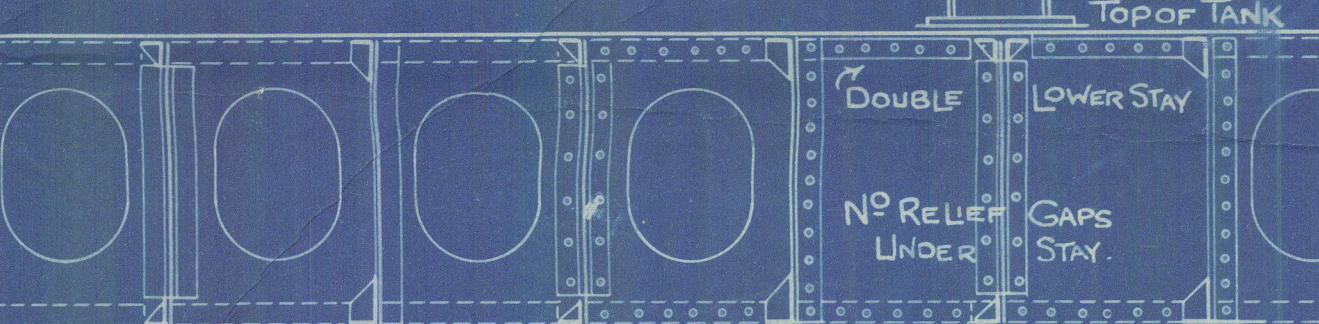
FRAME N°	HEIGHT IN THE CENTRE LINE FROM TOP OF TANK UP TO BULKHEAD	PLATING UP TO 2ND DECK	ANGLE BAR SINGLE AT DECK	STIFFENING	KNEE CONNECTION	SPACE
8	7.40	4.15	75 X 75 X 8	10 X 10 X 11	25	4 RIVETS WITH 700 SPACE
39	7.15	3.5	75 X 75 X 8	10 X 10 X 11	25	4 RIVETS WITH 700 SPACE
64	6.40	3.5	75 X 75 X 8	10 X 10 X 11	25	4 RIVETS WITH 700 SPACE
85	6.35	3.5	75 X 75 X 8	10 X 10 X 11	25	4 RIVETS WITH 700 SPACE
132	7.45	4.74	9.15	110 X 110 X 11	11	6
160	11.70	5.50	1.5	120 X 120 X 14	14	10

RIVETING OF THE OUTSIDE PLATING.

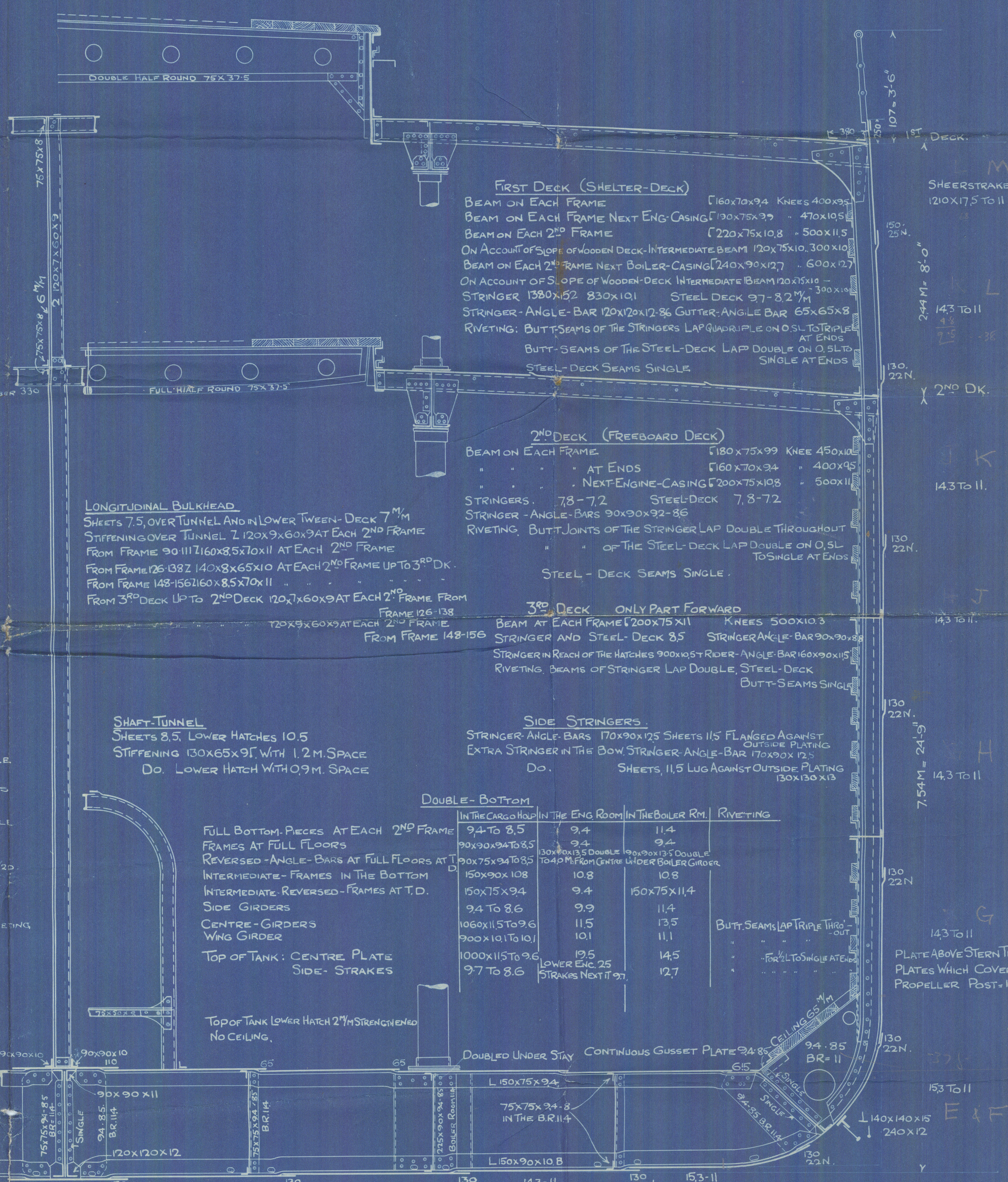
BUTTS OF THE PLATE-KEEL LAP TRIPLE ON WHOLE LENGTH
" OR SEAMS OF SHEER STRAKE AT 1ST DECK LAP QUADRUPLE ON O.S.L. TRIPLE AT THE ENDS.
SEAMS OF THE BOTTOM-STRAKES TRIPLE ON O.S.L. BILGE-STRAKES LAP QUADRUPLE ON O.S.L. TRIPLE AT THE ENDS.
BUTT-SEAMS OF THE SIDE-STRAKES LAP TRIPLE ON O.S.L. TRIPLE DOUBLE AT THE ENDS
BUTT-SEAMS OF THE BULKHEADS IN REACH OF THE HOUSES LAP SINGLE
SEAMS FROM KEEL TO SHEER STRAKE LAP DOUBLE THROUGHOUT, BULKHEAD SEAM SINGLE
RIVETS THROUGH OUTSIDE PLATING CROSS-FRAMES ABOVE DB 60, THROUGHOUT, WITHIN REACH OF THE ICE-STRENGTHENING IN AFTER PEAK 60
RIVETS THROUGH OUTSIDE PLATING WEB-FRAME-ANGLE-BAR 60 BULKHEAD-FRAME 5/23
PITCH OF RIVETS IN OUTSIDE PLATING SEAMS 40 WHERE FRAMES OR PLATES ARE BENT 2 RIVETS THROUGH FRAME SEAM.
RIVETS IN THE STRINGER-LUGS SIDE-GIRDERS IN THE DB AT OUTSIDE PLATING 50
UNDER THE BOSS THE STERN-POST IS CONNECTED WITH THE AH BY TRIPLE ZIG-ZAG RIVETING
RIVETS THROUGH PROPELLER-POST 6" $\frac{1}{4}$ LARGER IN DIAMETER

ICE - STRENGTHENING

OUTSIDE PLATING 21.5" $\frac{1}{4}$ FROM 600" $\frac{1}{4}$ OVER DEEP-WATER-LINE TO 600" $\frac{1}{4}$
UNDER BALLAST-TRIM-WATER-LINE ON 1/1 B BEHIND STEM
INTERMEDIATE FRAMES 170 X 85 X 9 FROM 900" $\frac{1}{4}$ OVER DEEP-WATER-LINE TO 900" $\frac{1}{4}$ UNDER BALLAST-LINE ON 1/1 B BEHIND STEM
INTERCOSTAL PLATE-STRINGERS IN C. 1.25M DISTANCE ON 1/1 B BEHIND STEM
SIDE-GIRDER WHEN FULL BOTTOM PCE. TO EACH 2ND FRAME



ENGINE FOUNDATION



REMARK
FULL BOTTOM-PIECES ON EACH 2ND FRAME, AS WELL AS UNDER W.T. BULKHEADS & BOILER GIRDERS
FULL BOTTOM-PIECES ON EACH FRAME ON O. 2SL IN FRONT AS WELL AS UNDER ENGINE-FOUNDATION
PART-BOTTOM-PIECES ON EACH FRAME UNDER THRUST-BEARING

Ex Kulturo Marie



Ex

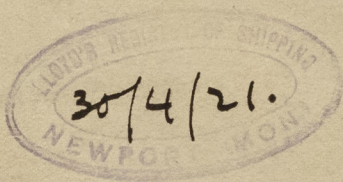
SS. "HESPERUS"

ex "PATRIA"

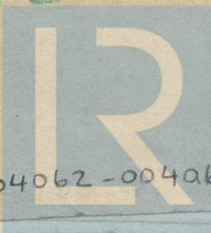
hpt 20130

Misship Section

N. N. Ledsund



RETAIN



© 2020

004062-004066-0071

Lloyd's Register
Foundation