

UNITED WITH THE BRITISH CORPORATION REGISTER

Ship's Name..... *Louis Lantz*
 ex. Skotas

Official Number.....

Nationality and Port of Registry..... *Rotterdam*

Port of Survey..... *Stamming*

Surveyor's Signature..... *Bruno Laet.*

Date of Survey..... *initial converted to an
and correct*

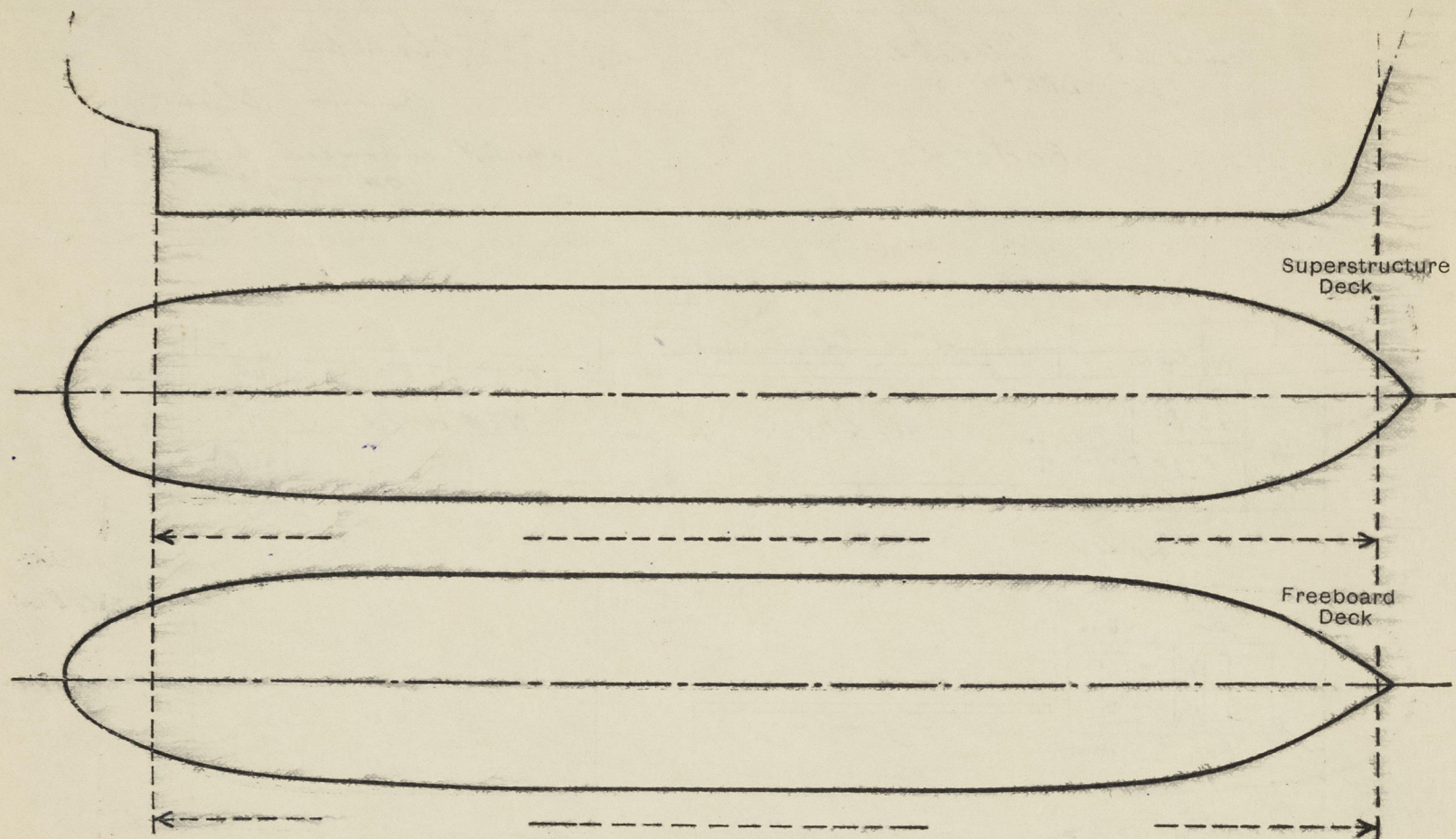
[illegible]

Particulars of Superstructures, Trunks, Casings, Deckhouses.								
	Coaming	Plating	Stiffeners	Spacing	End Attachments of Stiffeners	Size of Openings	Height of Sills	Height, Beam to Beam
Poop Bulkhead	-	11	5 250 x 90 x 12	740	Top + Bottom Brackets	660 x 1520	460	x
Raised Quarter Deck Bulkhead ...	-	-	-	-	-	-	-	-
Bridge, After Bulkhead	open							210
Bridge, Forward Bulkhead	open							
Forecastle Bulkhead... ..	-	9,5	L 90 x 75 x 10	760	None	$\begin{cases} 685 \times 1500 \\ 610 \times 1520 \\ 720 \times 1520 \end{cases}$	460	x
Trunk, Aft	-	-	-	-	-	-	-	-
Trunk, Forward	-	-	-	-	-	-	-	-
Exposed Machinery Casings on Free-board or Raised Quarter Decks ...	-	-	-	-	-	-	-	-
Exposed Machinery Casings on Super-structure Decks	-	9,5	L 125 x 75 x 9	840	None	1520 x 720	400	x
Machinery Casings within Superstructures not fitted with Class I Closing Appliances	-	9,5	L 125 x 75 x 9	840	NONE	1650 x 760	300	x
Deckhouses and Pump Room Entrances	L 150 x 90 x 12	10	L 120 x 8,5	500	Top E.W.	610 x 1300	610	2440

Poop Bulkhead	W.T. steel hinged door (ss) o.b.s. X
Raised Quarter Deck Bulkhead ...	✓
Bridge, After Bulkhead	✓
Bridge, Forward Bulkhead	✓
Forecastle Bulkhead	W.T. steel hinged doors o.b.s. X
Exposed Machinery Casings on Free-board or Raised Quarter Decks ...	✓
Exposed Machinery Casings on Super-structure Decks	Steel hinged doors o.b.s. (p+s) X
Machinery Casings within Superstructures not fitted with Class I Closing Appliances	Steel hinged doors o.b.s. (p+s) X
Deckhouses and Pump Room Entrances	W.T. steel hinged doors o.b.s. X

PARTICULARS OF PROTECTION TO OPENINGS, ETC.

The following diagrams should be used to indicate the positions of cargo and coaling hatchways, gangway, cargo and coaling ports, side scuttles, scuppers, ventilators, companionways, etc., which would affect the seaworthiness of the ship :-



Particulars of fiddle, funnel and ventilator coamings, engine room skylight and other openings in machinery casing tops and their means of closing :-

Fiddle opening fitted with steel hinged cover.
Funnel of steel supported on casing top in efficient condition.
Eng. Room skylight of substantial construction with steel hinged glass fitted with shutters. Ventilators on casing top of strong construction with satisfactory means of closing.

Particulars of Flush Bunker Scuttles :- None.

Particulars of Companionways: Poopdeck: - Companionway entrance (p.s.) led to poop space. Door: - (including those incorporated in deckhouses and masthouses) Op. 725 x 1520 mm, sill = 330 mm fitted with 2nd wooden hinged door o. br. of efficient construction.
Freeboard deck: - Entrance to pump room led. in side space. Door - Op. = 610 x 1630 mm, sill = 280 mm fitted with steel hinged door o. br. (having sheathing of eff. construction).

Number of vents?

Particulars of Ventilators in exposed positions on freeboard and superstructure decks :-

Fore Deck: - 300 mm diam. coaming 915 high x 9 mm led to pump room, hatched u. side space.
" " - 300 mm diam. coaming 915 high x 9 mm led to side space.
Freeboard deck: - 300 mm diam. coaming 915 high x 9 mm led to dry cargo hold.
Poopdeck: - 380 mm diam. coaming 860 high x 9 mm led to pump room.
" " - 350 mm diam. coaming 860 high x 9 mm led to A.P. space.
" " - 300 mm diam. coaming 760 high x 9 mm led to Poop space.
" " - 230 mm diam. coaming 915 high x 9 mm led to Poop space.
" " - 200 mm diam. coaming 840 high x 9 mm led to Poop space.
" " - 130 mm diam. coaming 860 high x 8 mm led to Poop space.
" " - 400 mm diam. coaming 915 high x 9 mm led to Poop space.

All vents efficiently constructed and fitted with wooden plugs and canvas covers.

Particulars of Air Pipes in exposed positions on freeboard, raised quarter, or superstructure decks :-

Fore deck: - 4th airpipe - 935 mm high.
Upper deck: - 7th + 8th airpipe - 915 mm high.
Poop deck: - 3rd + 4th airpipe - 610 + 915 mm high.

All airpipes fitted with approved closing appliances and with wire gauzes to O.F. Tanks.

Particulars of Gangway Cargo and Coaling Ports :-

None.

Particulars of Scuppers and Sanitary Discharge Pipes :-

4 upper deck scupper (p.s.) led through stringer angle bar and ship side shell plating compensated under Deck.
Sanitary discharge from bridge space led through ship side below Freeboard deck through 3rd + 4th approved stormwater fitted to ship side in way of pump room.
Scuppers and sanitary discharge from poop space led through ship side below Freeboard deck through 2nd + 4th approved stormwater fitted to ship side.

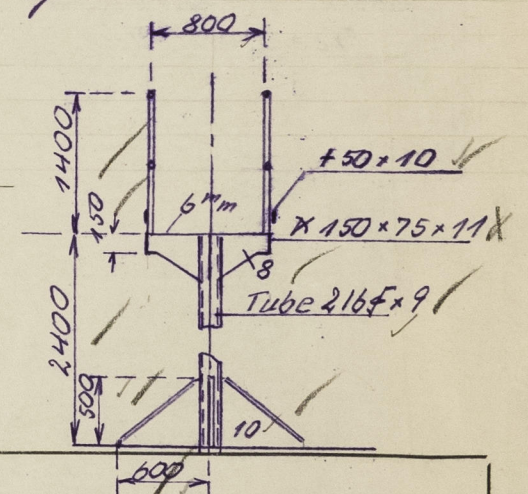
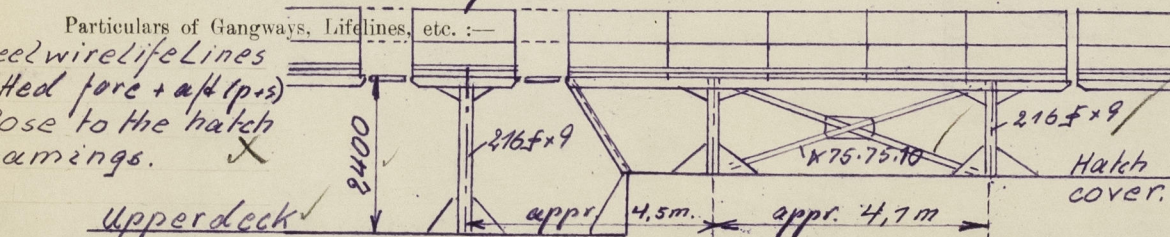
Particulars of Side Scuttles and Deadlights: - 250 mm dia. in way of side space and 300 mm dia. in way of poop space of substantial construction and fitted with permanent attached deadlights.

Vertical distance of Sill of lowest Side Scuttle above top of keel appr. 12.30 m
Distance from amidships to centre of lowest Side Scuttle

Particulars of Guard Rails and Bulwarks: - Guardrail on Fore deck: - 1070 mm high with 3 rods and stanchions 1350 mm apart.
Guardrail on Upper deck: - 1070 mm high with 3 rods and stanchions 1600 mm apart and every second stanchion fitted with slings.
Guardrail on Poop deck: - 1070 mm high with 3 rods and stanchions 1350 mm apart.

Particulars of Gangways, Lifelines, etc. :-
Steel wire lifelines fitted fore + aft (p.s.) close to the hatch coamings.

Upper deck



Particulars of Freeing Arrangements.

	Length of Bulwark	Height of Bulwark	Size of Freeing Ports	Number each side	Area each side	Rule area each side
After Well ...	✓					
Forward Well ...	✓					

State position of each freeing port ... After Well: -
(F. and A. position and height above deck edge) Forward Well: -

State whether the freeing ports are fitted with shutters, bars, or rails, and give particulars of such :-

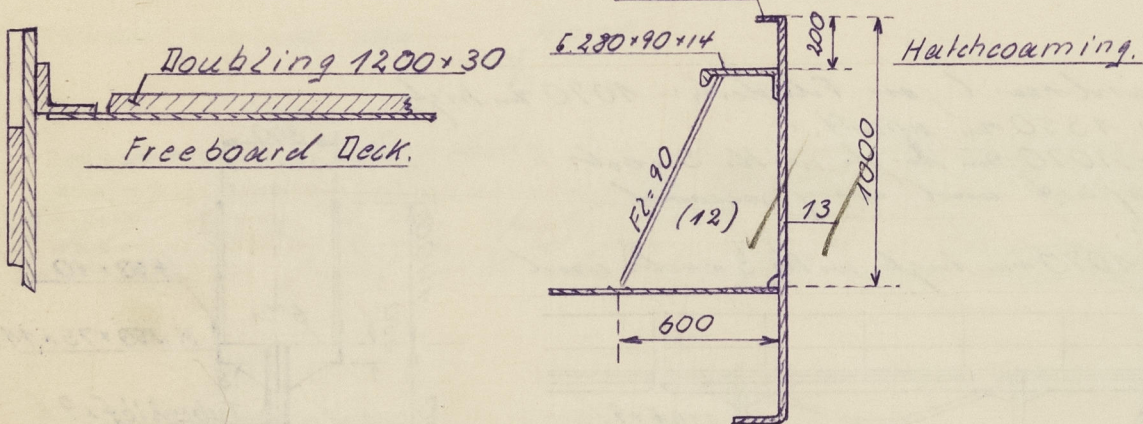
Additional area where sheer is less than standard.

PARTICULARS OF PROTECTION TO OPENINGS, ETC.

HATCHWAYS ON FREEBOARD AND SUPERSTRUCTURE DECKS.										
Freeboard Deck										
Description of Hatchway	Access To Hold	Dry cargo Hold	Access To Wing tank	Access To Chain Locker	Access To F.P. space	Access To Fore Deck
Dimensions of Hatchway	650 x 700 mm	2080 x 3050 mm	630 x 400 mm	450 x 610 mm	1140 x 1220 mm	610 x 560 mm
COAMINGS	Height above Deck	610	920	250	230	230	610
	Thickness	13	9.5	12.5	8	10	9.5
	Stiffeners	13	13	13	13	13	13
	Brackets, Stays	13	13	13	13	13	13
HATCH BEAMS	Number	1	1	1	1	1	1
	Spacing	1620	1620	1620	1620	1620	1620
	Scantling and Sketch	12 mm	12 mm	12 mm	12 mm	12 mm	12 mm
	Bearing Surface	1620	1620	1620	1620	1620	1620
FORE AND AFTERS	Number	1	1	1	1	1	1
	Spacing	1620	1620	1620	1620	1620	1620
	Unsupported Lengths	1620	1620	1620	1620	1620	1620
	Scantling* and Sketch	12 mm	12 mm	12 mm	12 mm	12 mm	12 mm
HATCH COVERS	Material	W.T. steel	Steel	Steel	W.T.	W.T.	W.T.
	Thickness	10 mm	9.5	12	8	8	8
	How fitted	5.280 x 90 x 14 mm	5.280 x 90 x 14 mm	5.280 x 90 x 14 mm	5.280 x 90 x 14 mm	5.280 x 90 x 14 mm	5.280 x 90 x 14 mm
	Bearing Surface	as approved	as approved	as approved	as approved	as approved	as approved
Spacing of Cleats	735 mm	370 mm	735 mm	735 mm	735 mm	735 mm
Number of Tarpaulins	1	1	1	1	1	1
*Are wood fore and afters steel shod at all bearing surfaces? <input checked="" type="checkbox"/>										
Are battens and wedges efficient and in good condition? <input checked="" type="checkbox"/>										
Are tarpaulins in good condition and in accordance with rule requirements? <input checked="" type="checkbox"/>										
Are lashings provided in accordance with rule requirements? <input checked="" type="checkbox"/>										
Are wood covers fitted with galvanised end bands? YES. <input checked="" type="checkbox"/>										

Particulars of any special features:— (Timber Deck-cargo Fittings, Skylights, Sewage Systems, Ash Ejectors, Rubbish Shoots, etc.)

Hatchways:— Prop deck (1st) aft:— access to pump room: size = 965 x 890 mm; coaming = 530 x 9.5 mm; 2 1/2" wooden covers; rest = 2" 8 cleats; 2 tarpaulins. Prop deck (1st) aft:— access to store: size = 100 x 700 mm; coaming 630 x 8 mm; fitted with int. steel hinged cover.



wing tank in 2B. ☒

bulk length - 32-38 ft. OK

24 + 20

38.7.



© 2020

Lloyd's Register Foundation