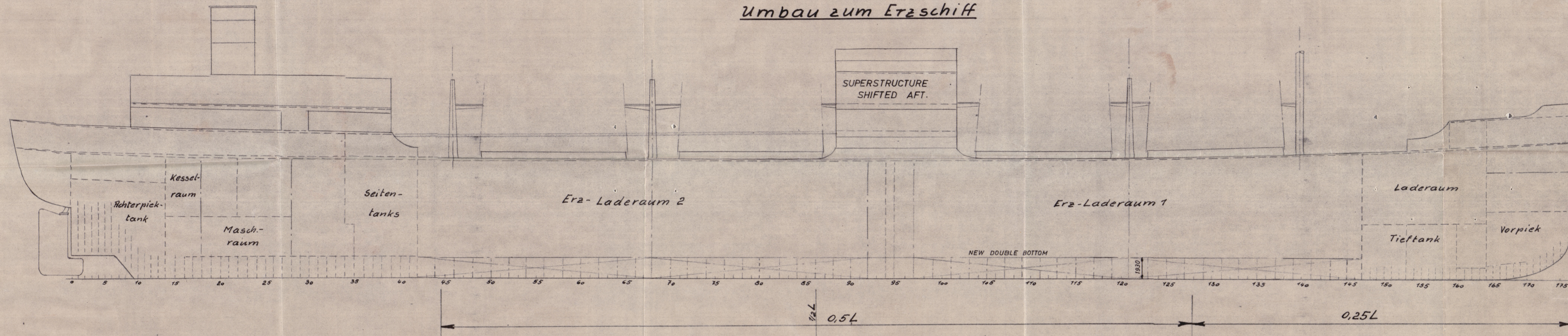


CONVERSION TO ORE CARRIER
Umbau zum Erzschiiff



M.S. "SKOTAAS"

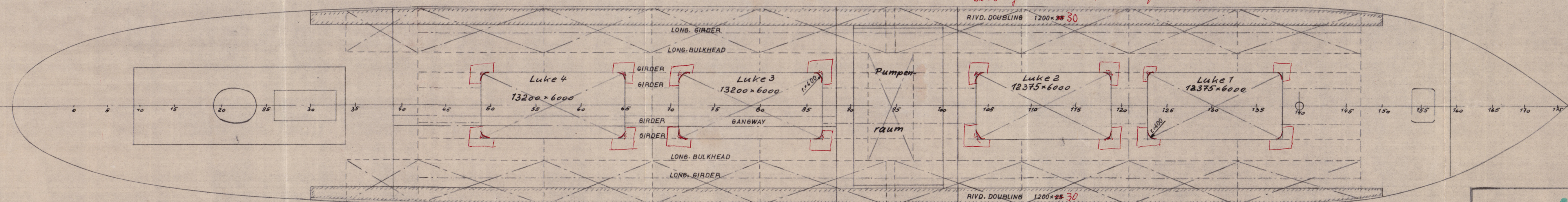
CLASS:

LOYD'S REGISTER 100 A 1

Abmessungen:

Länge zw. d. Loten = 137,11 m = 449'-10"
B = 17,49 m = 57'-0"
H = 10,82 m = 35'-6"

P. & S. WING TANKS WATER BALLAST ONLY. *Sheerstrake*
Doubling P. + S. 900 x 26 or equivalent



London Copy



Peuse Nr.: 4		25. April 1956		Lloyd's Register	
Gezeichnet	Datum	Name	Abt.	S.K.R. HOWALDTSWERKE HAMBURG A.-G.	
Geprüft	25-4-56	<i>Stinner</i>			
Norm. ger.			ges.	M.S. "SKOTAAS"	
Maßstab:	CONVERSION TO ORE CARRIER				
1:200	Umbau z. Erzschiiff				
				Zeichnungs-Nr. 8579/1	