

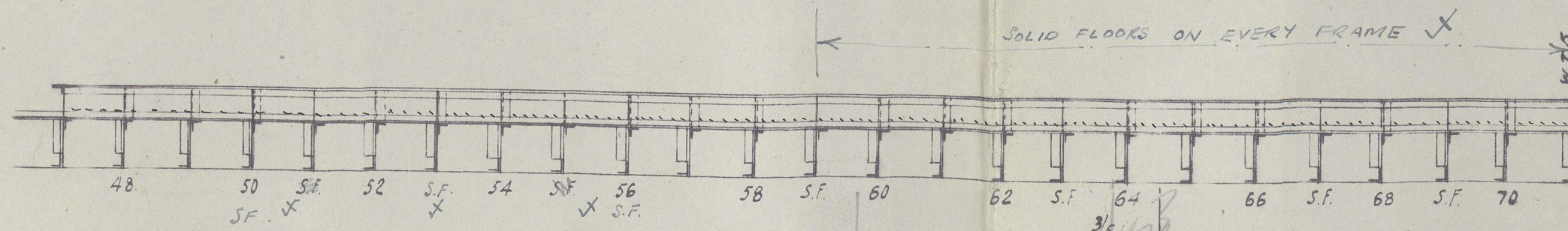
Office

M. ROSE - JULIE M.
DOUBLE BOTTOM TANK.

SCALES AS SHOWN

RPT. No. 9ms. 23387

Office



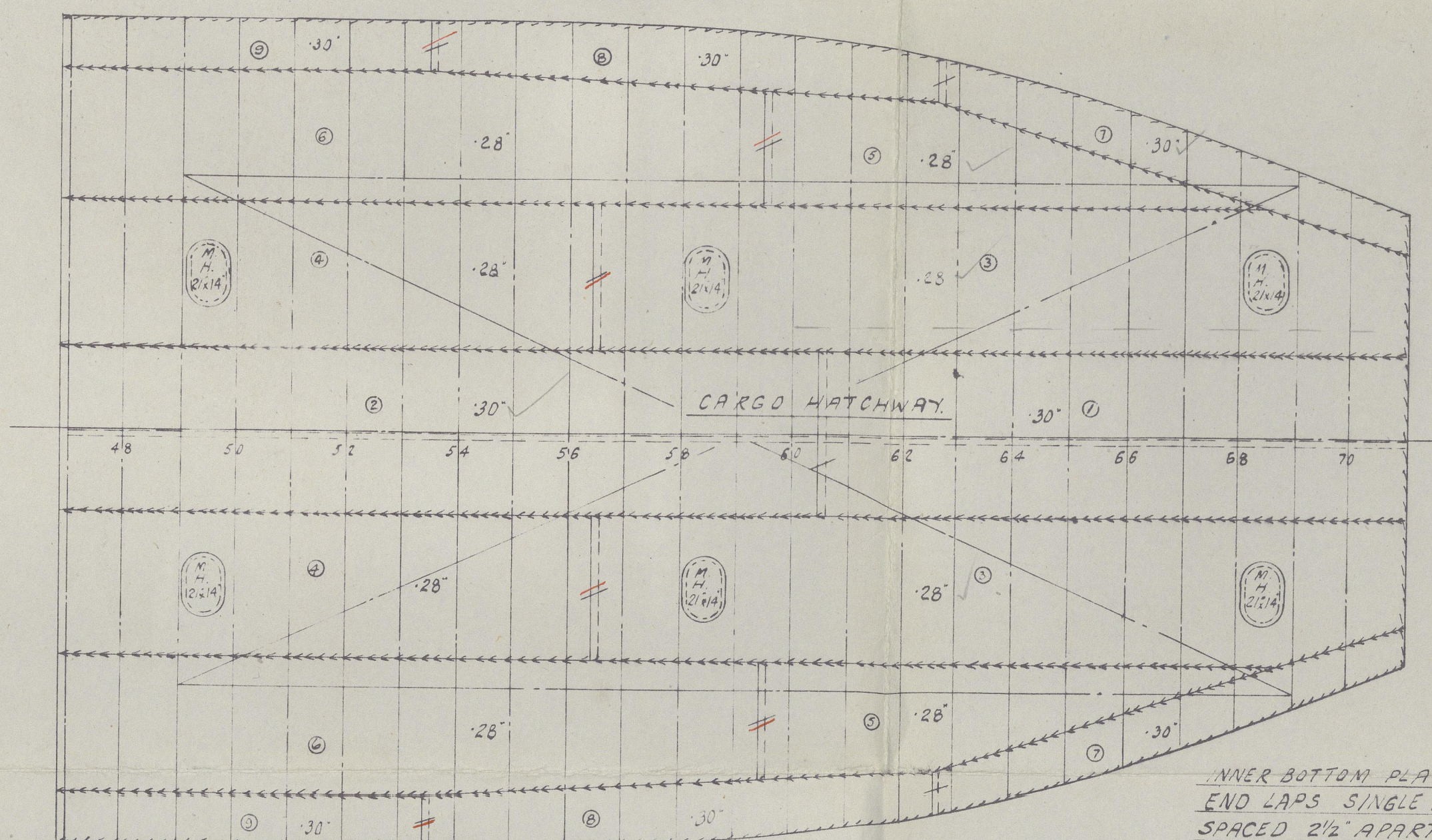
S.F. DENOTES SOLID FLOOR

ELEVATION

SCALE: 1/4" = 1 FT.

INDICATES OWNERS PROPOSAL -
SEE LETTER DATED 26/7/48.

FORWARD 3/5 L = 42 FT FROM MIDSHIPS
1/6 BETWEEN FRAMES 64 & 5
63-64



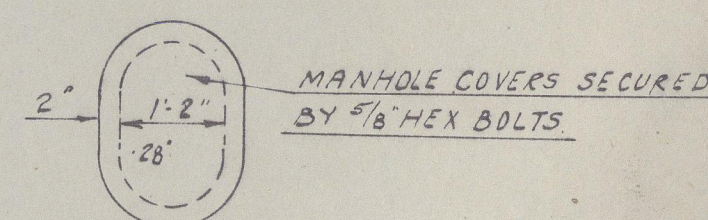
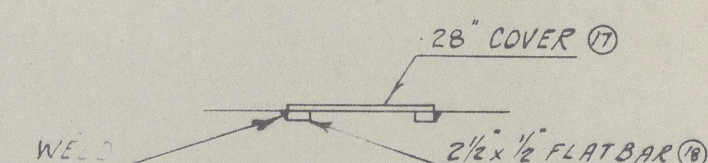
MARGIN PLATE SLOTTED AND WELDED
TO FRAMES.

PLAN ON TANK TOP
SCALE: 1/4" = 1 FT.

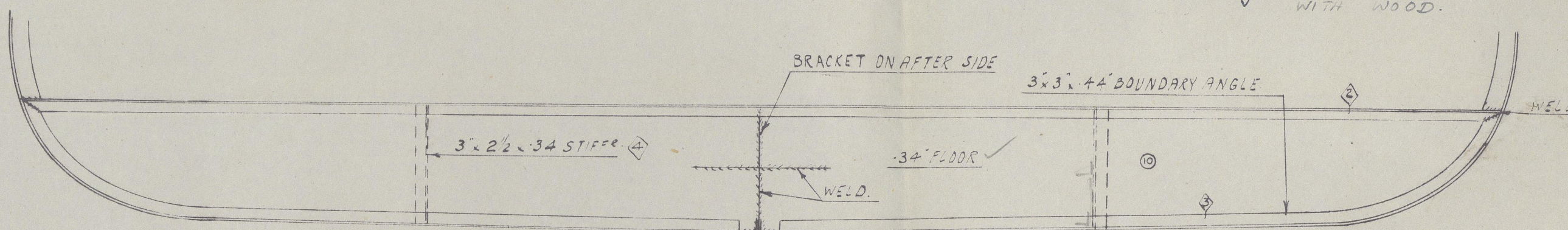
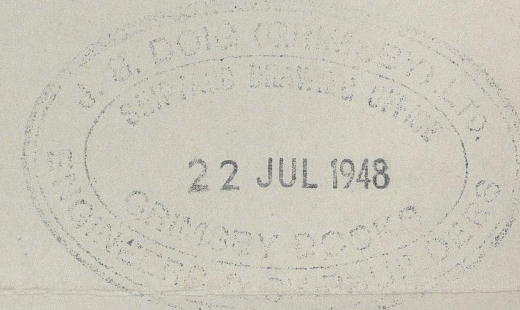
INNER BOTTOM PLATING SEAMS WELDED
END LAPS SINGLE RIVETED 5/8" RIVS.
SPACED 2 1/2" APART CR TO CR.

TANK TOP PLATING WITHOUT CEILING
MARGIN .36"
INNER AND CENTRE STRAKE .36"

TANK TOP TO BE SHEATHED
WITH WOOD.

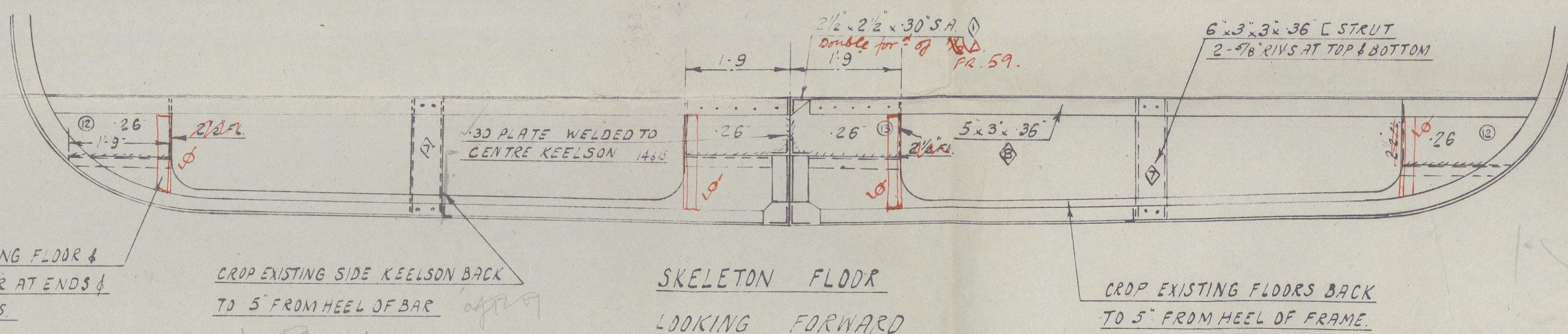


DETAIL OF MANHOLE COVERS
SCALE: 1/2" = 1 FT.



W.T. TANK END
FR 47
LOOKING FORWARD

Stiffening Angle.

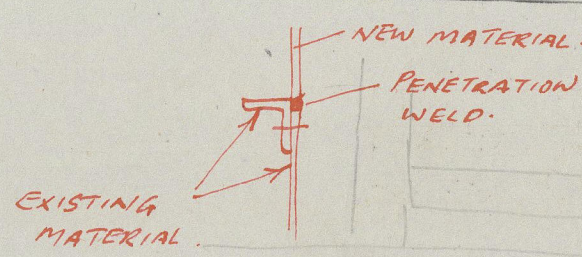
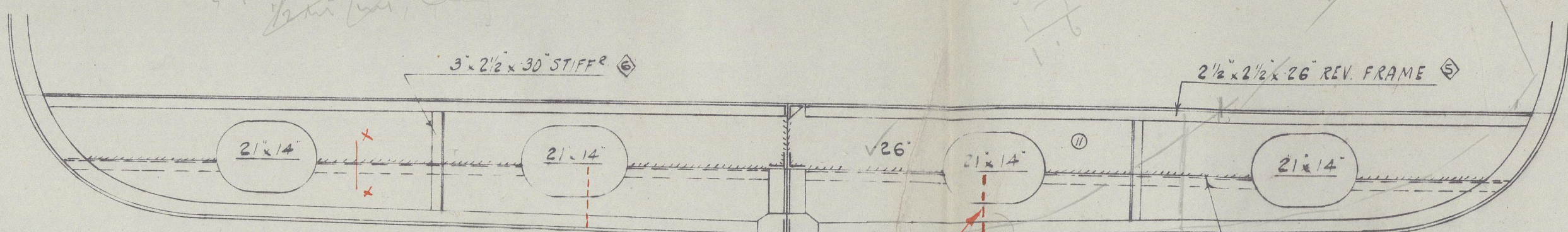


LEAVE EXISTING FLOOR &
REVERSE BAR AT ENDS &
CENTRE THUS.

DROP EXISTING SIDE KEELSON BACK
TO 5" FROM HEEL OF BAR

SKELETON FLOOR
LOOKING FORWARD

DROP EXISTING FLOORS BACK
TO 5" FROM HEEL OF FRAME.



SECTION XX

SOLID FLOOR
LOOKING FORWARD
SCALE: 1/2" = 1 FT.

1/2 height in vertical
between frs 60 and 71.
manhole repositioned to suit.
(corresponding to position of
existing keelson)

WELD NEW TOP PIECE
TO EXISTING FLOOR. RETAINING
REV BAR CLEAR OF MANHOLE.

