

36639.

Lloyd's Register of Shipping.

SURVEYS FOR FREEBOARD.

(CONDITIONS OF ASSIGNMENT.)

GRK. REPORT N° 21565.

Ship's Name *CLINTONIA* *EMPIRE BAFFIN.*

Port of Survey *Greenock.*

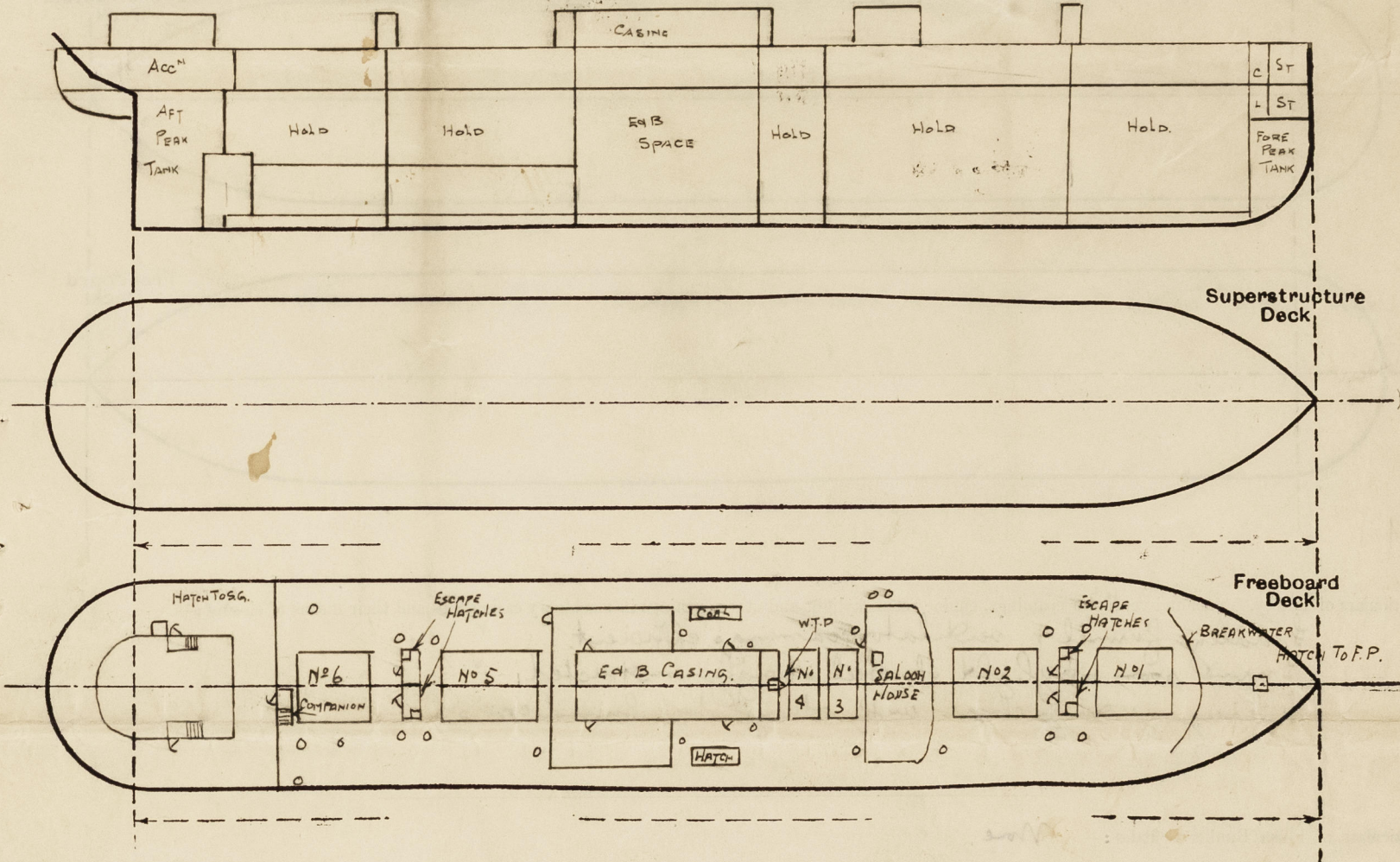
Official Number *168968*

Surveyor's Signature *Kenneth Lyles.*

Nationality and Port of Registry *British, Greenock.*

Date of Survey *While building 1941.*

Disposition and dimensions of superstructures, trunks, deckhouses and machinery casings to be inserted in the diagrams and tabular statement :-



Particulars of Superstructures, Trunks, Casings, Deckhouses.								
	Coaming	Plating	Stiffeners	Spacing	End Attachments of Stiffeners	Size of Openings	Height of Sills	Height of Casings
Poop Bulkhead ...								
Raised Quarter Deck Bulkhead ...								
Bridge, After Bulkhead ...								
Bridge, Forward Bulkhead ...								
Forecastle Bulkhead ...								
Trunk, Aft ...								
Trunk, Forward ...								
Exposed Machinery Casings on Freeboard or Raised Quarter Decks ...	34	30	3 1/2 x 3 x 40	31	Beck At Top CONTINUOUS AT BOTTOM	2 @ 5' x 2'	21'	7'-6"
Exposed Machinery Casings on Superstructure Decks ...								
Machinery Casings within Superstructures not fitted with Class I Closing Appliances ...	34	26	3 x 3 x 30	27	Beck At Top	2 @ 5' x 2'-3"	18"	7'-6"
Deckhouses on Flush Deck Ships ...								

Particulars of Closing Appliances (state if capable of being manipulated from both sides).	
Poop Bulkhead ...	
Raised Quarter Deck Bulkhead ...	
Bridge, After Bulkhead ...	
Bridge, Forward Bulkhead ...	
Forecastle Bulkhead ...	
Exposed Machinery Casings on Freeboard or Raised Quarter Decks ...	
Exposed Machinery Casings on Superstructure Decks ...	
Machinery Casings within Superstructures not fitted with Class I Closing Appliances ...	
Deckhouses on Flush Deck Ships ...	

*Two deck bulkhead openings closed with portable plates and bolts in accordance with D.S.M.R. Memo 14/51885 dated 21/3/40*

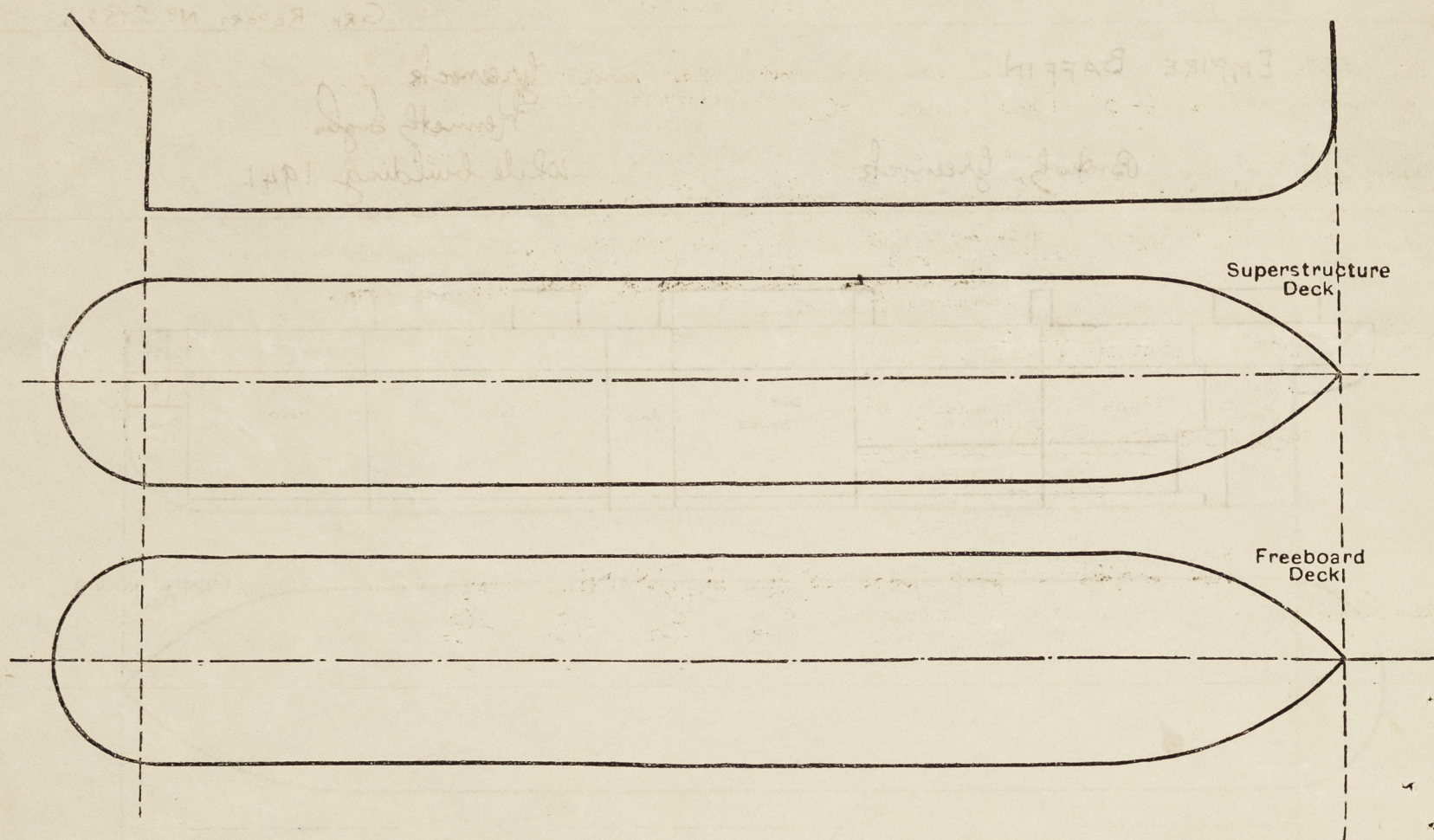
*Steel doors workable from both sides ✓*

*Steel doors workable from both sides ✓*



# PARTICULARS OF PROTECTION TO OPENINGS, ETC.

The following diagrams should be used to indicate the positions of cargo and coaling hatchways, gangway, cargo and coaling ports, ventilators, companionways, etc., which would affect the seaworthiness of the ship:—



Particulars of fiddle, funnel and ventilator coamings, engine room skylight and other openings in machinery casing tops and their means of closing:—

Fiddle funnel & ventilator coamings efficient.  
Engine room skylight of steel strongly constructed.  
Fiddle gratings closed with strong steel hinged covers.

Particulars of Flush Bunker Scuttles:— None.

Particulars of Companionways:— Entrance to accommodation in poop from deckhouse fitted with steel doors 5'2" with coaming 22" above composition.  
Hatch to three airlocks inside saloon house having steel doors with 18" coaming.  
Companion to extra defense personnel accommodation aft of No 6 hatch of steel having steel door with coaming 22" above deck.  
Entrance to holds from substantially constructed mast house, having steel doors with 21" coaming two ladders in each mast house. Also to No 3 hold from trunk at fore end of galley, having steel W.T. door secured by dog and 21" coaming.

Particulars of Ventilators in exposed positions on freeboard and superstructure decks:—			
15	vents	18" dia on upper deck to hold.	coaming 36x40
2	"	18" " " " " " "	" 36x40
1	"	18" " " " " " "	" 36x40
1	"	10" " " " " " "	" 36x32
12	"	8" " " " " " "	" 38 1/2 x 32
1	"	10" " " " " " "	" 36x30
2	"	6" " " " " " "	" 38 1/2 x 30
1	"	10" " " " " " "	" 36x32
1	"	6" " " " " " "	" 36x32
1	"	15" " " " " " "	" 33x38
1	"	10" " " " " " "	" 36x32
2	"	9" " " " " " "	" 33x32
2	"	6" " " " " " "	" 36x32
2	"	12" " " " " " "	" 36x34

All ventilators built in accordance with the Society's rules & provided with wood plugs.

Particulars of Air Pipes in exposed positions on freeboard, raised quarter, or superstructure decks:—

1	3"	dia	S.M. air pipe to fore peak tank.
8	3"	"	" " " " " " " "
4	2 1/2"	"	" " " " " " " "
2	3 1/2"	"	" " " " " " " "
7	4"	"	" " " " " " " "
2	2 1/2"	"	" " " " " " " "
2	3"	"	" " " " " " " "

all air pipes 30" high & fitted with wood plugs.

Clintonia ex Empire Baggin

Particulars of Gangway Cargo and Coaling Ports:—

None.

Particulars of Scuppers and Sanitary Discharge Pipes:— Sanitary discharges from upper deck led overboard & fitted with storm valves 6'-0" below upper deck.  
Sanitary discharges from spaces below upper deck led overboard above second deck and fitted with two automatic non returning valves, both valves being accessible.  
3" pipe scuppers fitted to upper deck & led overboard.  
No sanitary nor scupper discharges led overboard below second deck.

Particulars of Side Scuttles:—

Side scuttles in poop space 10" dia of substantial construction & fitted with hinged deadlights.

Vertical distance of Sill of lowest Side Scuttle above top of keel 37'-0"

Particulars of Guard Rails:—

Upper deck - 3 rails 3'-6" high, stanchions about 5'-0" apart except in way of deckhouse amidships where steel bulwark substantially constructed is fitted. No freeing ports 3'-0" x 1'-6" (with steel rod) are cut on each side of vessel.

Particulars of Gangways, Lifelines, etc.:—

Lifelines fitted all fore & aft on both sides of vessel.

## Particulars of Freeing Arrangements.

	Length of Bulwark	Height of Bulwark	Size of Freeing Ports	Number each side	Area each side	Rule area each side
After Well ...						
Forward Well ...						

State position of each freeing port ... (After Well:—

(F. and A. position and height above deck edge) Forward Well:—

State whether the freeing ports are fitted with shutters, bars, or rails, and give particulars of such:—

Additional area where sheer is less than standard.



# PARTICULARS OF PROTECTION TO OPENINGS, ETC.

HATCHWAYS ON FREEBOARD AND SUPERSTRUCTURE DECKS.											
Description of Hatchway		Nº1	Nº2.546	Nº3	Nº4.						
Dimensions of Hatchway		31'6" x 20'	31' x 20'	12'11" x 20'	10'4" x 20'						
COAMINGS	Height above Deck	30	30	30	30						
	Thickness	.44	.44	.44	.44						
	Stiffeners	B.A. 7 x 3 x 3/8	B.A. 7 x 3 x 3/8	ES 4 ENDS	8 x 3 x 50 A7	Nº245					
	Brackets, Stays	3/4 dia. SDES 3	3	1	1						
HATCH BEAMS	Number	5	5	6-1/2	6-5/8						
	Spacing	5'-3"	5'-2"	6'-5 1/2"	6'-5 1/8"						
	Scantling and Sketch	18 1/2 x 36	16 3/4 x 36	19 1/2 x 38	19 1/2 x 38						
	Bearing Surface	3	3	3	3						
FORE AND AFTERS	Number										
	Spacing										
	Unsupported Lengths										
	Scantling* and Sketch										
HATCH COVERS	Material	W.P.	W.P.	W.P.	W.P.						
	Thickness	2 1/2	2 1/2	3	3						
	How fitted	F4A	F4A	F4A	F4A						
	Bearing Surface	3	3	3	3						
Spacing of Cleats		24	24	24	24						
Number of Tarpaulins		2	2	2	2						
<p>*Are wood fore and afters steel shod at all bearing surfaces? <input checked="" type="checkbox"/></p> <p>Are battens and wedges efficient and in good condition? <input checked="" type="checkbox"/> YES</p> <p>Are tarpaulins in good condition and in accordance with rule requirements? <input checked="" type="checkbox"/> YES</p> <p>Are lashings provided in accordance with rule requirements? <input checked="" type="checkbox"/> YES LOCKING BARS PROVIDED AT ALL HATCHES</p>											

Particulars of any special features:—

The scantlings are suitable for a draught 18" in excess of that corresponding to the freeboard which could be assigned to the vessel with a tonnage opening.

Endorsement at first survey and at surveys for renewal of Certificate:—

The fittings and appliances are in accordance with the particulars shown on this form (or as now modified) and are in good condition.



© 2020

Lloyd's Register Foundation