



Lloyd's Register of Shipping.

SURVEYS FOR FREEBOARD.

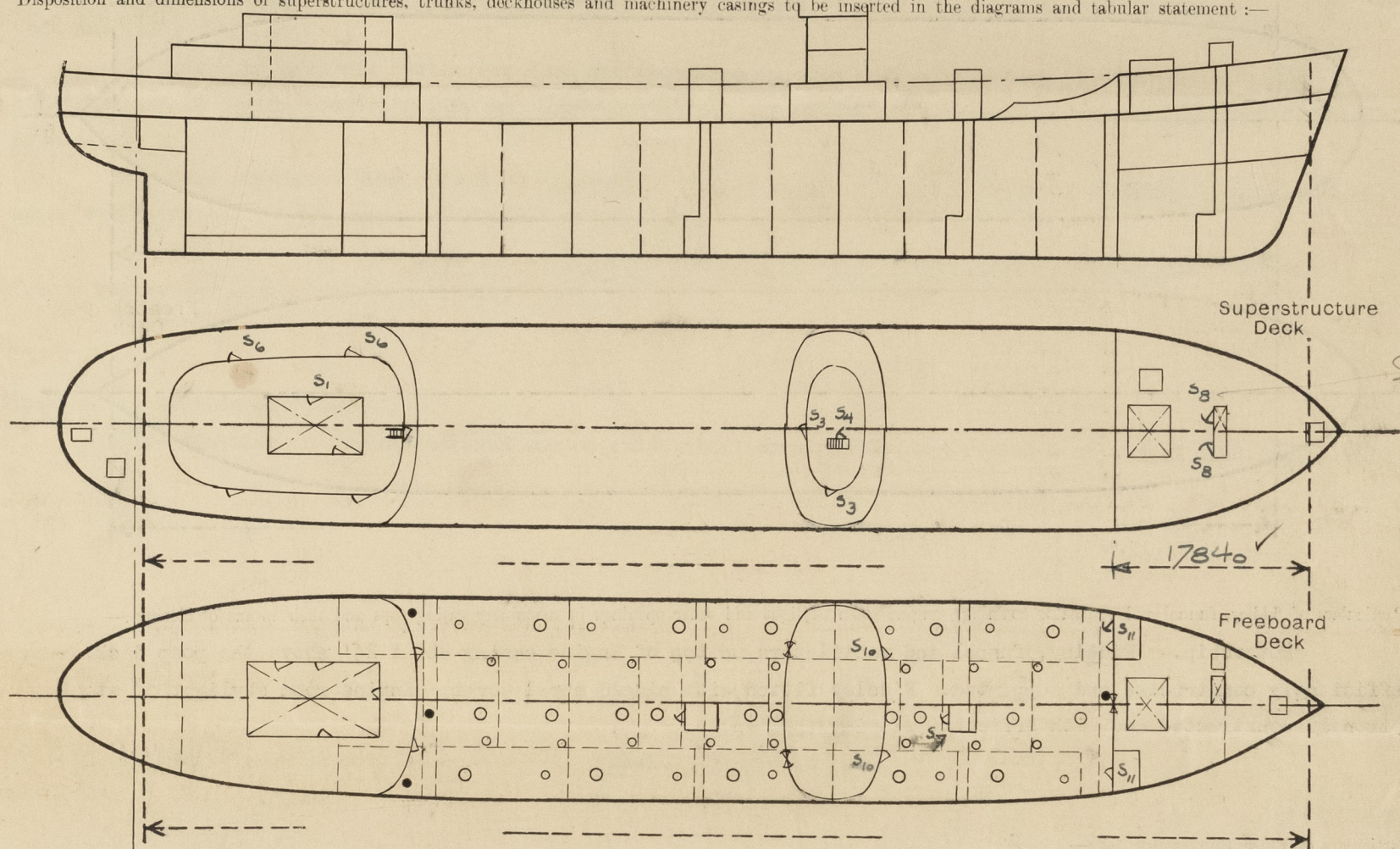
(CONDITIONS OF ASSIGNMENT.)

 Index No. _____
 (For London Office only.)

2 - DEC 1954

Ship's Name WATFORD TRADER Port of Survey Gothenburg
 Official Number --- Surveyor's Signature Hanselamy
 Nationality and Port of Registry LIBERIAN, MONROVIA, Danish, Esbjerg Date of Survey During construction

Disposition and dimensions of superstructures, trunks, deckhouses and machinery casings to be inserted in the diagrams and tabular statement:—



Particulars of Superstructures, Trunks, Casings, Deckhouses.

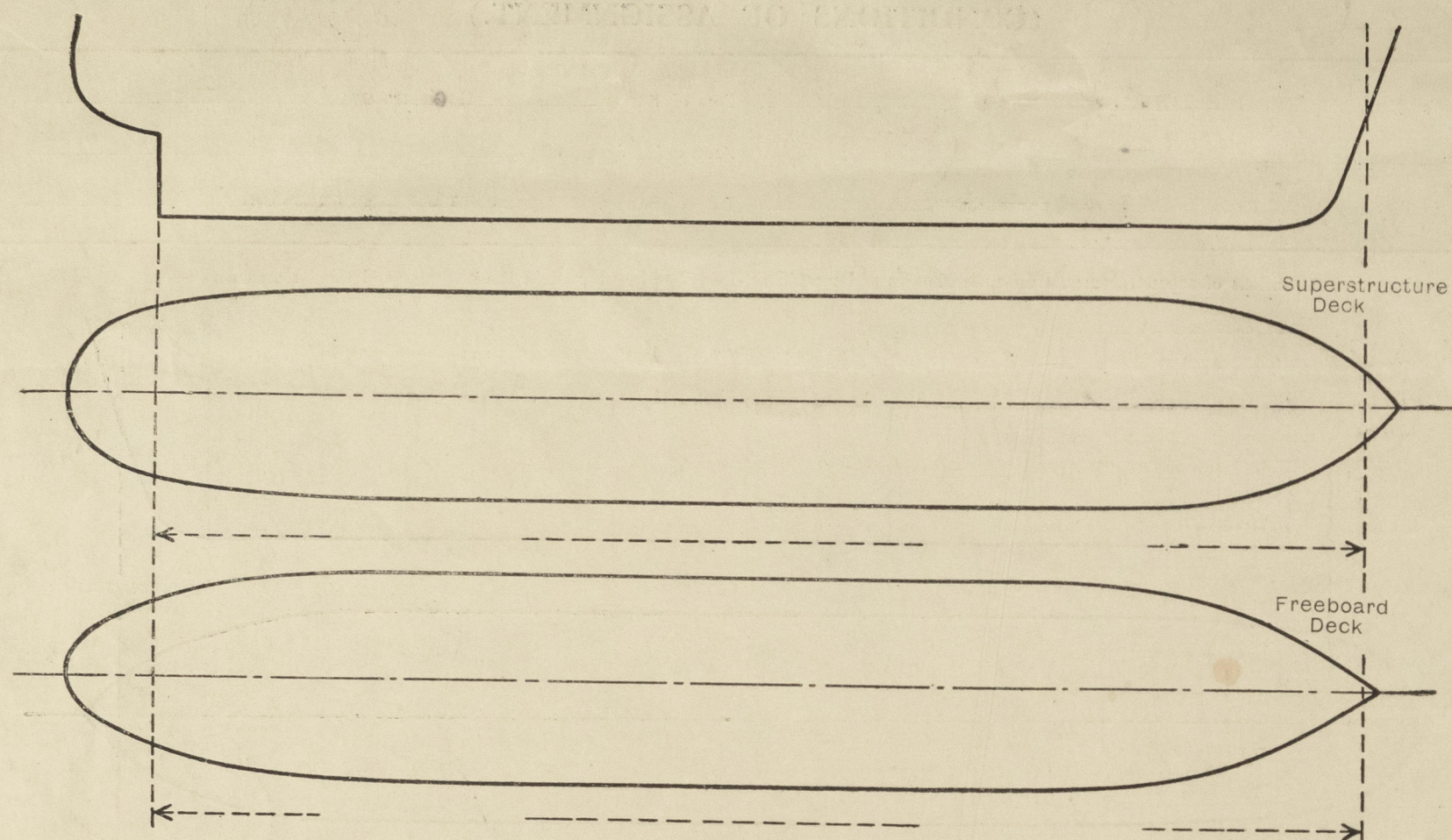
	Coaming	Plating MM.	Stiffeners MM.	Spacing MM.	End Attachments of Stiffeners	Size of Openings MM.	Height of Sills MM.	Height of Casings MM.
Poop Bulkhead ...	---	11.0 ✓	250x100x11 T	750 - 850 ✓	Brackets top Welded bottom	1570x740x2 ✓	460 ✓	---
Pump Rooms amidships ...	---	8.0 ✓	75 x 65 x 8 T	830 ✓	Welded top and bottom ✓	1800 x 685 ✓	650 ✓	2600 ✓
Bridge, After Bulkhead ...	---	7.5/11 ✓	75 x 65 x 6 T	750 - 850 ✓	Brackets top Welded bottom	1590x950x2 ✓	390 ✓	---
Bridge, Forward Bulkhead...	---	11.0 ✓	260 x 12 P	750 - 850 ✓	Brackets top Welded bottom	1580x760x2 ✓	380 ✓	---
Forecastle Bulkhead...	---	7.5 ✓	75 x 50 x 8 T	750 - 850 ✓	Brackets top Welded bottom	1360x1325x1 ✓ 640x1665x3	405 ✓ 305 ✓	---
Trunk, Aft ...	---	---	---	---	---	---	---	---
Trunk, Forward ...	---	---	---	---	---	---	---	---
Exposed Machinery Casings on Freeboard or Raised Quarter Decks...	---	---	---	---	---	---	---	---
Exposed Machinery Casings on Superstructure Decks ...	---	---	---	---	---	---	---	---
Forward Pump Room Trunk on the Freeboard Deck ...	---	6.5 ✓	75 x 50 x 6 T 60 x 30 P	630 - 730 ✓	None top Continuous btm	None ✓	---	---
Trunk to Dry Cargo Hold on the Freeboard Deck ...	---	7.5 ✓	75 x 50 x 6.5 T	670 - 750 ✓	None	None ✓	---	---

Particulars of Closing Appliances (state if capable of being manipulated from both sides).

Poop Bulkhead ...	Hinged steel doors, closed W.T. and operable from both sides. ✓
Pump Room amidships ...	Hinged steel door, closed W.T. and operable from both sides. ✓
Bridge, After Bulkhead ...	Portable steel plates with hook bolts not passing through the bulkhead. ✓
Bridge, Forward Bulkhead ...	Hinged steel doors, closed W.T. and operable from both sides. ✓
Forecastle Bulkhead...	Portable steel plates with hook bolts not passing through bulkhead. ✓
Exposed Machinery Casings on Freeboard or Raised Quarter Decks...	Hinged steel W.T. doors, operable from both sides. ✓
Exposed Machinery Casings on Superstructure Decks ...	Hinged steel doors, operable from both sides. ✓
Forward Pump Room Trunk on the Freeboard Deck ...	Hinged steel doors, operable from both sides. ✓
Trunk to Dry Cargo Hold on the Freeboard Deck ...	No openings. ✓
	No openings. ✓

PARTICULARS OF PROTECTION TO OPENINGS, ETC.

The following diagrams should be used to indicate the positions of cargo and coaling hatchways, gangway, cargo and coaling ports, ventilators, companionways, etc., which would affect the seaworthiness of the ship:—



Particulars of fiddley, funnel and ventilator coamings, engine room skylight and other openings in machinery casing tops and their means of closing:—

Motorship.— Fiddley, funnel and ventilators on top of Engine casing about 24' above the poop deck, efficiently constructed and supported. Fiddley fitted with hinged steel cover. Engine room skylight of steel strongly constructed and with efficient closing appliances. ✓

Particulars of Flush Bunker Scuttles:—

None fitted. ✓

Particulars of Companionways:—

Companionway to pump room forward on forecastle deck of steel substantially constructed and with watertight door operable from both sides. Sill 645 mm. ✓

Particulars of Ventilators in exposed positions on freeboard and superstructure decks:—

All ventilators on freeboard and superstructure decks 915 mm. in height or above, efficiently constructed and supported and provided with means of closing. ✓

Particulars of Air Pipes in exposed positions on freeboard, raised quarter, or superstructure decks:—

All air pipes on freeboard-, poop-, bridge- and forecastle decks are of steel of goose-neck type, 915 mm. high or above on freeboard deck, 800 mm. high or above on poop deck, 700 mm. high or above on forecastle deck, efficiently constructed and supported and provided with means of closing. ✓

PETRA DAN.

Wattford Trader.

Petra Dan.

Particulars of Gangway Cargo and Coaling Ports:—

None fitted.

Rubbish Shoot fitted on poop deck and through shell above upper deck aft in stern strongly constructed steel trunk, 850 mm. coaming on poop deck and W.T. steel hinged cover. ✓

Particulars of Scuppers and Sanitary Discharge Pipes:—

Scuppers and sanitary discharges from accommodation in bridge deck led through steel trunk fitted with cement in wing cargo tanks No.2, port and starboard, and fitted with non-return valves on upper deck and through shell about 5800 mm. below upper deck. ✓

Scuppers from lower 'tween deck and upper 'tween deck aft in poop to engine room bilge with screw plug on 'tween deck. ✓ Scuppers from refrigerated spaces in poop to engine room bilge fitted with screw plugs on upper deck and water trap. ✓

Scuppers and sanitary discharges from accommodation in poop and on poop deck through shell in aft cofferdam and in engine room 5500-6000 mm. below upper deck and fitted with non-return valves and sluice valves at shell. ✓

Sanitary discharge from urinal on upper deck through ship's side in aft pump room about 5800 mm. below upper deck with non-return valve and sluice valve at shell. ✓

Scuppers from poop deck gutterways through shell 5500 mm. below upper deck in engine room with non-return valves and sluice valves at shell. ✓

Particulars of Side Scuttles:—

Side scuttles in superstructures are of substantial construction and fitted with hinged dead-lights. ✓

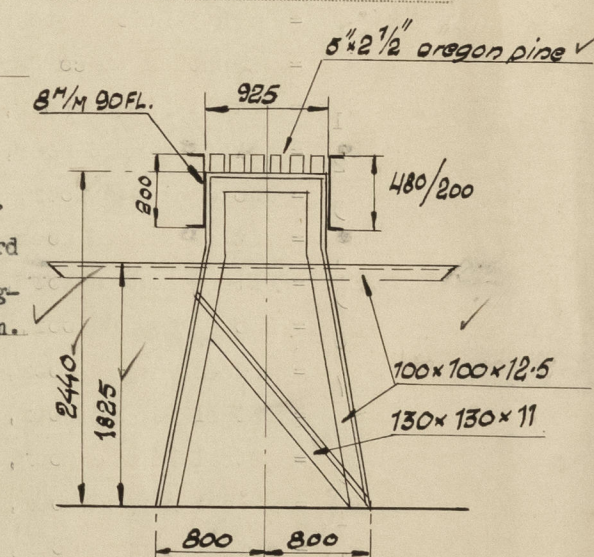
Vertical distance of Sill of lowest Side Scuttle above top of keel. About 13 Metres. ✓

Particulars of Guard Rails:—

Open rails, 1075 mm. in height with 3 rods, are fitted on freeboard deck except forward part and on forecastle deck, efficiently constructed and supported. Stanchions spaced about 1200 mm. ✓ Steel bulwark fitted on forward part of freeboard deck and poop deck of substantial construction as per sketch. Guard rails on gangway substantially constructed have also 3 rods and stanchions spaced about 1550 mm. ✓

Particulars of Gangways, Lifelines, etc.:—

Gangway fitted between poop, bridge- and forecastle deck as per sketch, substantially constructed and supported about 3320 mm. apart. ✓



Particulars of Freeing Arrangements.

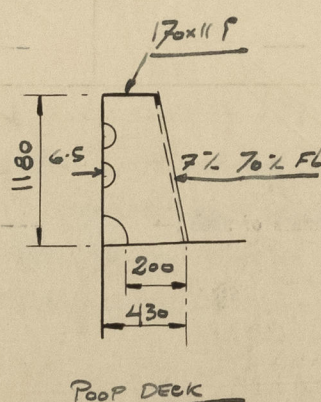
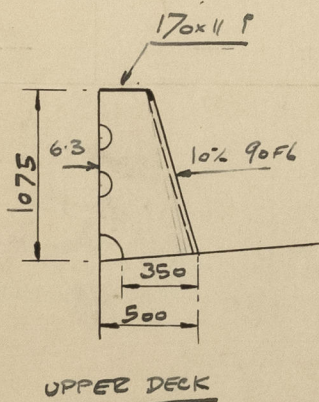
	Length of Bulwark	Height of Bulwark	Size of Freeing Ports	Number each side	Area each side	Rule area each side
After Well ...						
Forward XXXX Part of Freeboard Deck	15.7 Metres	1075 mm.	---	---	---	---
State position of each freeing port ...	{ After Well:— (F. and A. position and height above deck edge) { Forward Well:—					
State whether the freeing ports are fitted with shutters, bars, or rails, and give particulars of such:—	---					
Additional area where sheer is less than standard.	---					

PARTICULARS OF PROTECTION TO OPENINGS, ETC.

HATCHWAYS ON FREEBOARD AND SUPERSTRUCTURE DECKS.												
Freeboard deck												
Forecastle deck												
Poop deck												
Bridge												
Description of Hatchway	To Fore Peak	To Cargo Tanks	Ventilation hatches	Manholes to cofferdams & side tanks	To Dry Cargo Hold	To Fore Peak	Dry Cargo Hold	To Store	To Provision	To Store	To Store	To Store
Dimensions of Hatchway	1180x1180	1550x600	317 Ø	450 x 350	630 x 650	1180x1180	3375x3400	1000x1000	1480x980	1180x730	600x800	600x800
COAMINGS	Height above Deck	225 ✓	800 ✓	100 ✓	100 ✓	230 ✓	620 ✓	840 ✓	230 ✓	180 ✓	230 ✓	460 ✓
	Thickness { Sides	8.0 ✓	10.0 ✓	10.0 ✓	10.0 ✓	8.0 ✓	7.5 ✓	11.0 ✓	9.0 ✓	10.0 ✓	10.0 ✓	11.0 ✓
	Thickness { Ends	---	---	---	---	---	---	---	---	---	---	---
	Stiffeners ...	---	---	---	---	---	---	170x75x107	---	---	---	---
HATCH BEAMS	Brackets, Stays	---	---	---	---	---	---	1	---	---	---	---
	Number ...	---	---	---	---	---	---	---	---	---	---	---
	Spacing ...	---	---	---	---	---	---	---	---	---	---	---
	Scantling and Sketch	---	---	---	---	---	---	---	---	---	---	---
FORE AND AFTERS	Bearing Surface	---	---	---	---	---	---	---	---	---	---	---
	Number ...	---	---	---	---	---	---	---	---	---	---	---
	Spacing ...	---	---	---	---	---	---	---	---	---	---	---
	Unsupported Lengths	---	---	---	---	---	---	---	---	---	---	---
HATCH COVERS	Scantling* and Sketch	---	---	---	---	---	---	---	---	---	---	---
	Bearing Surface	---	---	---	---	---	---	---	---	---	---	---
	Material ...	Steel	Steel	Steel	Steel	Steel	Steel	Steel	Steel	Steel	Steel	Steel
	Thickness ...	6.5 stiff.	11.0 stiff.	12.5 ✓	12.5 ✓	7.5 ✓	7.5 stiff.	8.0 stiff.	7.5 hinged	8.5 stiff.	8.5 stiff.	8.0 ✓
Spacing of Cleats or toggles	How fitted	2 hinges	2 hinges	12 bolts	O.T. 14-7/8"	2 hinges	2 hinges	130x65x8	2 hinges	2 hinges	2 hinges	2 hinges
	Bearing Surface	8 toggles	W.T.	à 75. W.T.	bolts à 75	6 toggles	8 toggles	2 long	5 toggles	6 toggles	5 toggles	7 toggles
	Number of Tarpaulins...	---	---	---	---	---	---	---	---	---	---	---
	---	---	---	---	---	---	---	---	---	---	---	---
*Are wood fore and afters steel shod at all bearing surfaces? ---												
Are battens and wedges efficient and in good condition? ---												
Are tarpaulins in good condition and in accordance with rule requirements? ---												
Are lashings provided in accordance with rule requirements? ---												

Particulars of any special features:—

- = Cargo tank hatch,
- = Ventilation hatches to cargo tanks,
- = Manholes to cofferdams and side bunkers,
- S₁ = Steel hinged door, operable from both sides,
- S₂ = Steel hinged door, operable from both sides, sill 460 mm. ✓
- S₃ = Wood hinged door, operable from both sides, sill 200 mm. ✓
- S₄ = Steel hinged door, operable from both sides, sill 460 mm. ✓
- S₅ = Steel hinged door, operable from both sides, closed W.T., sill 460 mm.,
- S₆ = Wood hinged door, operable from both sides, sill 460 mm., ✓
- S₇ = Steel hinged door, operable from both sides, sill 650 mm., closed W.T., ✓
- S₈ = Steel hinged door, operable from both sides, closed W.T., sill 645 mm., ✓
- S₉ = Steel hinged door, operable from both sides, closed W.T., sill 460 mm.,
- S₁₀ = Steel hinged door, operable from both sides, closed W.T., sill 380 mm., ✓
- S₁₁ = Steel hinged door, operable from both sides, closed W.T., sill 305 mm. ✓



© 2021

Lloyd's Register Foundation