

Section frame 9

559
S.S. 545/56 U. 559

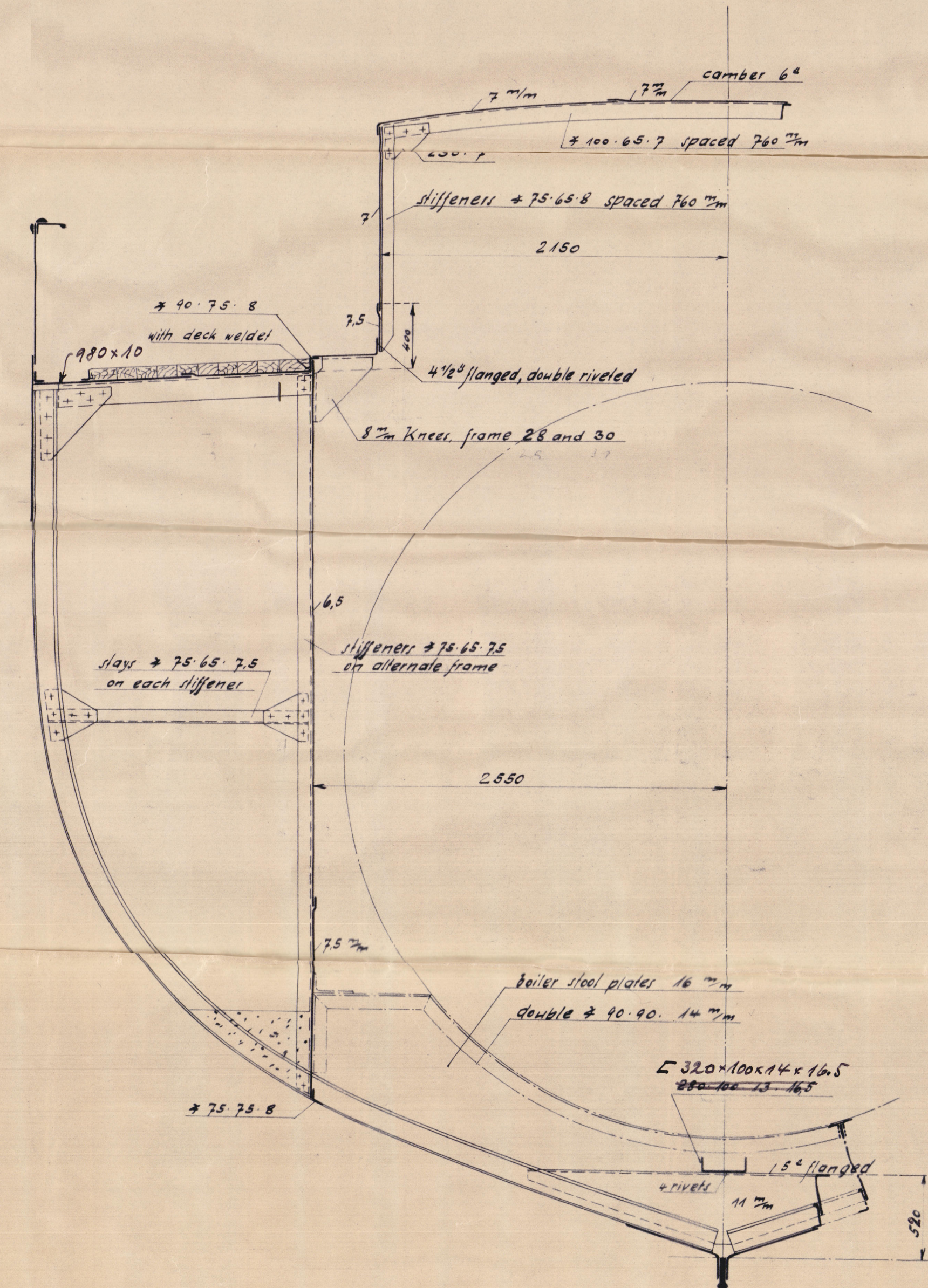
Midship-Section AS BUILT. of Steel-screw steam trawler "NORTHERN DUKE." 1:25

Length between perpendiculars in CWL 177.00' = 53,949 m
Length between perpendiculars (Lloyd's) 184.4' = 56,204 m
Breadth moulded 28.0' = 8,534 m
Depth 16.5' = 5,029 m
Class: + 100 RA, Steam Trawler, Lloyd's Register of Shipping
L x D = 3043 L x D = 11

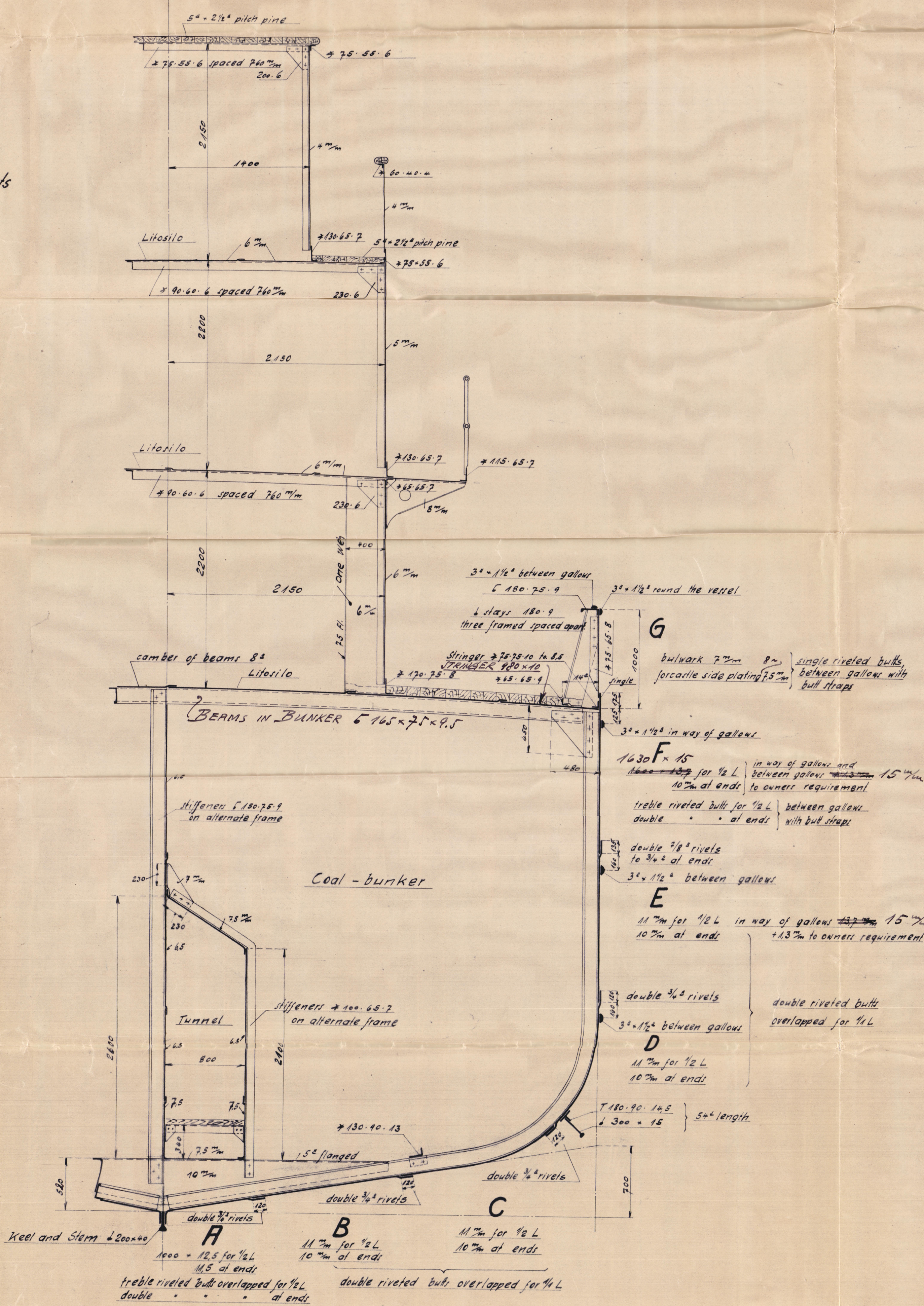
Scantlings:
Side frames to longitudinal plan
Frames spacing 200 x 40
Bulkheads 200 x 40
Keel and stern
Propeller post
Rudder with plan to be submitted
Rudder

Equipment L x (B+D) = 8464
1 Anchor 13 cwt stockless
1 " 12 " "
1 " 4 1/2 " ex stock
150 Fathoms 1 3/16" stud link cable 132 1/2 cwt
60 " 2 1/4" flexible steel wire
60 " 2 1/4" "

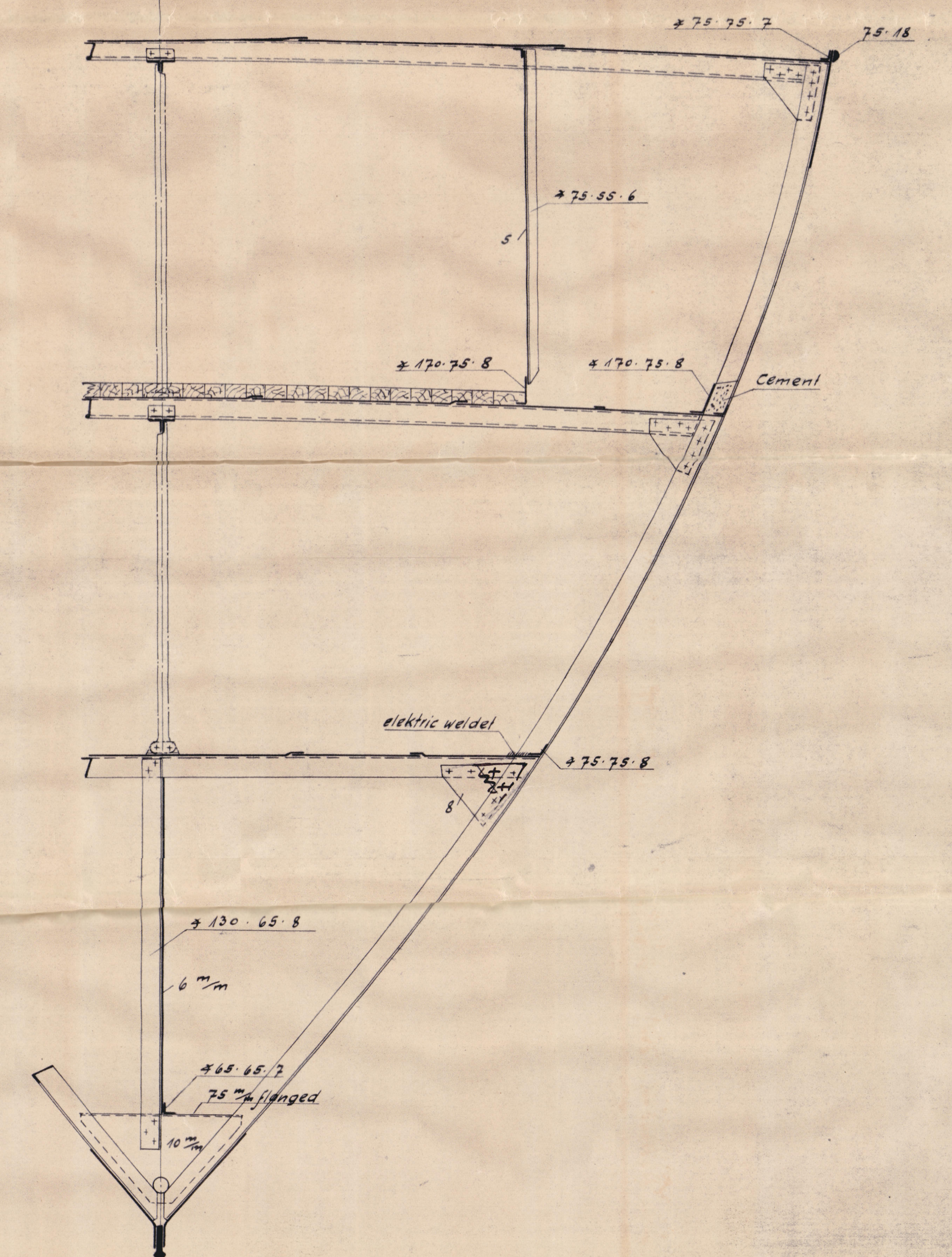
Section in Boiler-Room



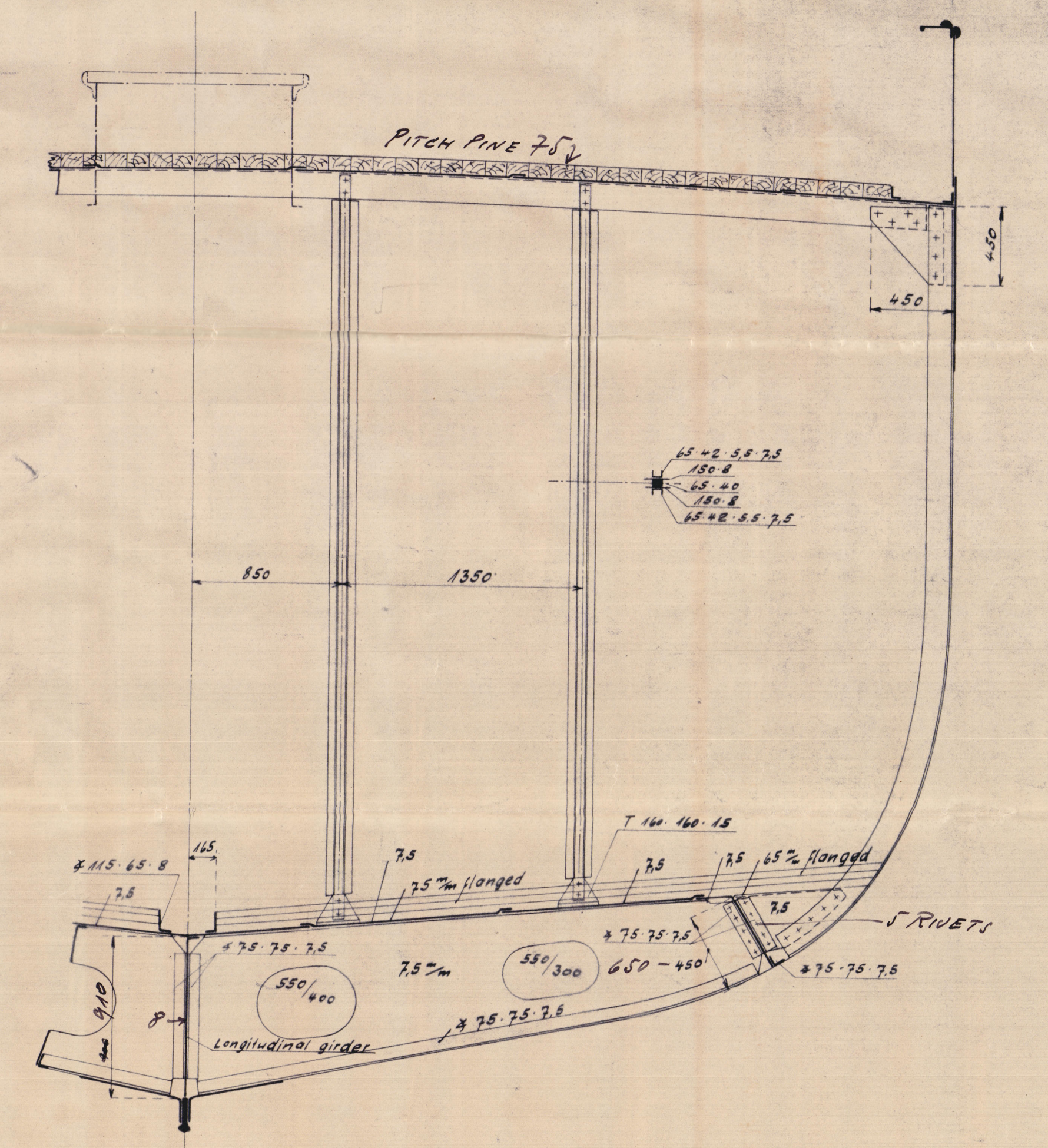
Midship-Section



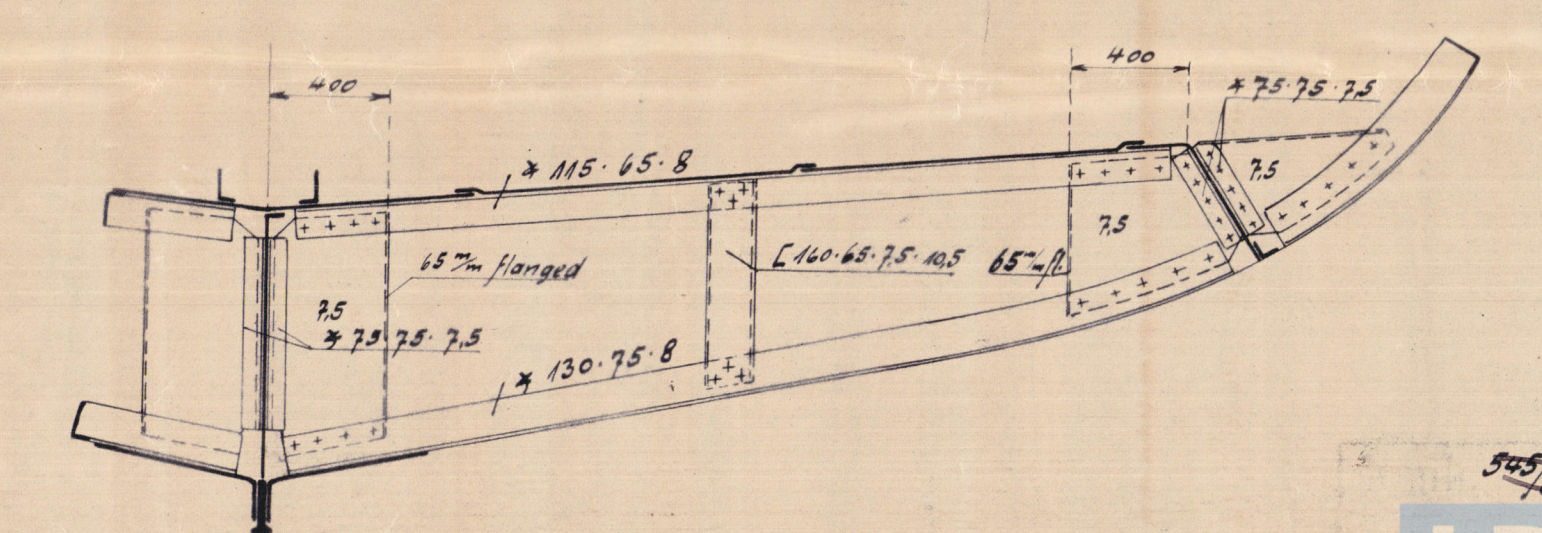
Section frame 87




Section in Fishroom



Bracket floors



MESSRS: DESCHIMAG WERK CEEBECK'S YARD No 559

STEAM TRAWLER "NORTHERN DUKE" 

MIDSHIP SECTION AS BUILT.

BREMEN FIRST ENTRY REPORT No 1854

003994-004002-0228



© 2020

Lloyd's Register
Foundation

