

Lloyd's Register of Shipping.

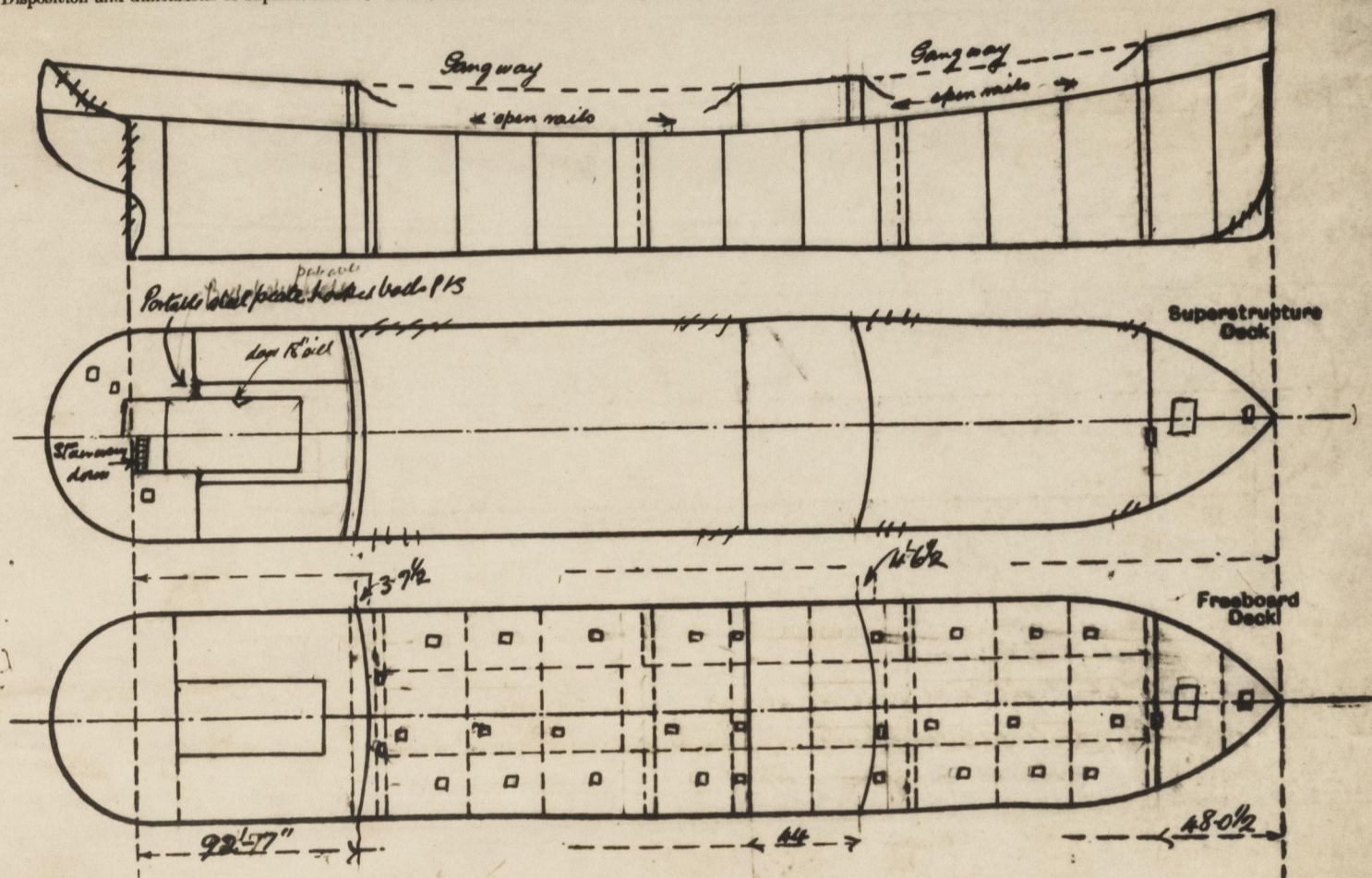
SURVEYS FOR FREEBOARD.

(CONDITIONS OF ASSIGNMENT.)

F. 38

Ship's Name **SAN. VERONICO**Port of Survey **Belfast**Official Number **168369**Surveyor's Signature *Wm. Balfour*Nationality and Port of Registry **British. London**Date of Survey **during construction**

Disposition and dimensions of superstructures, trunks, deckhouses and machinery casings to be inserted in the diagrams and tabular statement:—



Particulars of Superstructures, Trunks, Casings, Deckhouses.

	Coaming	Plating	Stiffeners	Spacing	End Attachments of Stiffeners	Size of Openings	Height of Sills	Height of Casings
Poop Bulkhead ...	44	44	101 3/4 x 7/8 BA	28" 6 3/4"	welded top flanges	20' 5' x 3'	18"	7' 6"
Raised Quarter Deck Bulkhead ...	✓							
Bridge, After Bulkhead ...	30	30	6 x 3 1/2 x 7/8 BA	30" 6 3/8"	welded top flanges	20' 5' x 3'	18"	7' 6"
Bridge, Forward Bulkhead ...	44	44	9 x 3 1/2 x 7/8 BA	30"	welded top flanges	20' 5' x 3'	18"	7' 6"
Forecastle Bulkhead ...	30	30	4 x 2 1/2 x 3/4 L	30" 6 3/8"	none	20' 5' x 3'	18"	7' 6"
Trunk, Aft ...	✓							
Trunk, Forward ...	✓							
Exposed Machinery Casings on Freeboard or Raised Quarter Decks ...	✓							
Exposed Machinery Casings on Superstructure Decks ...	✓							
Machinery Casings within Superstructures not fitted with Class I Closing Appliances ...	✓							
Deckhouses on Flush Deck Ships ...	✓							

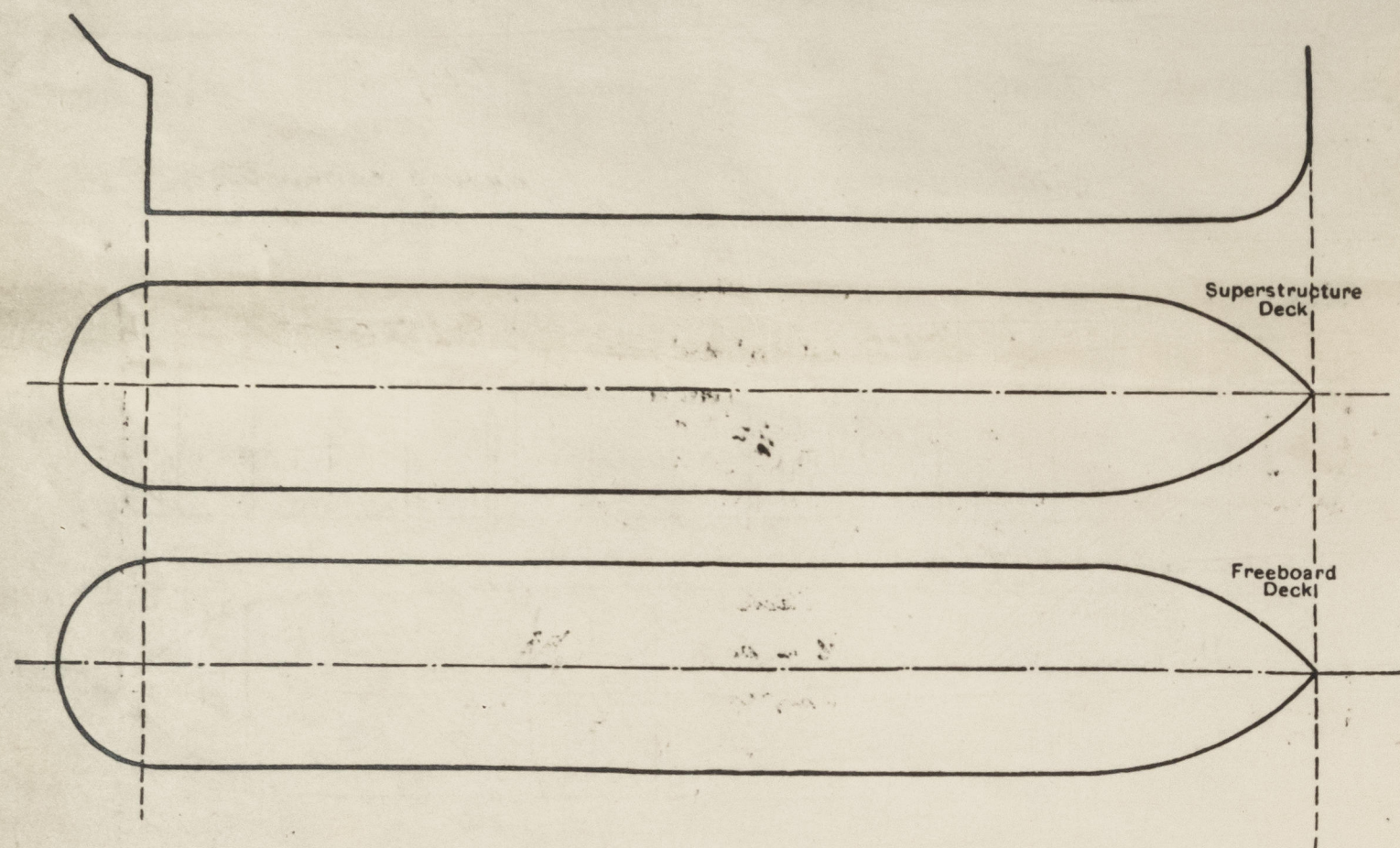
Particulars of Closing Appliances (state if capable of being manipulated from both sides).

Poop Bulkhead ...	Hinged steel W.T. door*
Raised Quarter Deck Bulkhead ...	✓
Bridge, After Bulkhead ...	Two portable steel stiffened plates secured by hook bolts
Bridge, Forward Bulkhead ...	Two hinged steel W.T. doors*
Forecastle Bulkhead ...	Two portable steel stiffened plates secured by hook bolts
Exposed Machinery Casings on Freeboard or Raised Quarter Decks ...	✓
Exposed Machinery Casings on Superstructure Decks ...	✓
Machinery Casings within Superstructures not fitted with Class I Closing Appliances ...	✓
Deckhouses on Flush Deck Ships ...	✓

* operated from both sides

PARTICULARS OF PROTECTION TO OPENINGS, ETC.

The following diagrams should be used to indicate the positions of cargo and coaling hatchways, gangway, cargo and coaling ports, ventilators, companionways, etc., which would affect the seaworthiness of the ship:-



Particulars of fiddle, funnel and ventilator coamings, engine room skylight and other openings in machinery casing tops and their means of closing:-

No fiddle openings.
Engine room skylight is of steel of strong construction fitted with hinged steel flaps.
Ventilators to dunking boiler space and engine room are of substantial construction situated on coaming top.

Particulars of Flush Bunker Scuttles:-

None

Particulars of Companionways:-
On forecandle deck:- Access to forward pump room, 66" x 36" x 7'6" high, plating 32
forward side on sluff 3' x 30" with 3' x 30" door 30" x 5'6" with 19" hinged steel rubber jointed toggle plating 32
forward and after pump in wells, access - steel deckhouse height 6'0" x 6'6", plating 4' x 6'6" 3/4" B.L. door 36"
27' x 52" oval 3/4" hinges steel rubber toggle water tight. On poop deck aft end, stairway to crew quarters
in strong deckhouse door 5'6" x 2'6" with 15" steel hinged, rubber toggle water tight.

Particulars of Ventilators in exposed positions on freeboard and superstructure decks:-

On forecandle deck:- 4 off 13" dia; 2 off at 9" dia: coaming 36" by rule thickness
to forecandle after and below freeboard deck. Fitted with steel N.T. cover in
wood plugs beam cover. 3 off 8" x 4" x 1/4" Tyffe Vents.

On Deck:- 4 off 6" dia x 30" x rule thickness coal Vents to spaces in bridge tween decks
effluent
in closing appliances

Poop:- 12" dia coal, 6" dia mushroom top x 30" x Rule thickness.
one 10" dia mushroom top 9' x 3" coaming x 32 attached to deckhouse side
10 off 8" x 4" x 30" x 1/4" Tyffe Vents. Coal Ventilation provided with wood plug.

Boat deck canvas cover
6, 10, 12" dia coamings 30" x Rule thickness
Forward Well:- 2 off 13" to forward cofferdam pump room coaming over 8 ft. high to side deck, 4" Rule thickness
2 off 18" to forward cofferdam pump room coaming over 8 ft. high to side deck, 4" Rule thickness
2 off 24" - aft
Vents to pump room have oval gas baffle plates

Particulars of Air Pipes in exposed positions on freeboard, raised quarter, or superstructure decks:-

On forecandle deck:- 10" dia to fore peak 20" dia to deep tank. 30" high
on freeboard deck:- fore well 20" dia to forward cofferdam, carried up 6 ft. a side wellhead
(with effluent
coaming appliances) aft well: 20" dia to after cofferdam 20" dia to oil fuel tankers, 20" dia
to settling tanks carried up poop front clepped thru to.

Poop Deck 20" 3 1/2" to after peak; 40" 2 1/2" to fore water; 10" 2 1/2" to main tank
10" 2 1/2" dia to stern compartment all 30 high

On Coaming top 2 1/2" to 4" dia from tank to Eng space 18" above coaming top
All air pipes on poop, bridge & side provided with canvas covers.

SAN VERONICO

Particulars of Gangway Cargo and Coaling Ports:-

None.

Particulars of Scuppers and Sanitary Discharge Pipes:-

From forecandle deck in wells. Scuppers cut through gunwale angle and in way of pump room
cast steel bends fitted.

Forecandle space:- drainage from this space is by means of 1 1/2" holes in fore wellhead.

Bridge deck space:- drainage from this space is by means of 1 1/2" holes in bridge after wellhead.

Poop space:- Scuppers from forecandle deck within poop led overboard with storm valves
at ship's side
Sanitary discharges led overboard below forecandle deck with storm valves at ship's side

Upper bridge:- Sanitary discharges from accommodation in bridge deck led overboard in
forward pump room without passing through the cargo tanks.

Spaces below forecandle deck aft drain through scupper led to engine room bilge

Spaces below forecandle deck for drain into drain tank or main deck.
Storm valves of malleable cast iron.

Particulars of Side Scuttles:-

none below forecandle deck

18" dia clear glass thru shell in poop, bridge & side

12" x 14" in deck houses on superstructures.

all fitted with hinged deadlights.

Vertical distance of Sill of lowest Side Scuttle above top of keel

None below forecandle deck

Particulars of Guard Rails:-

On poop, bridge & side and between bulwarks in wells
3'8" high, 3 rails, stanchions 4'6" to 5' apart

Particulars of Gangways, Lifelines, etc.:-

Fore and aft gangway in wells 7'0" high, channel stringer 6'3' x 3'3/4" P.S.
connected by 3' x 3' x 3/8" transverse angles spaced 4'0" apart. Gangway plating 32 with transverse strips
welded to plating with rails (2 each side). Gangway supported by bracing to deck 4' x 4' x 1/2" angles
spaced 8'0" apart and spaced 5'3" transversely at deck. Supports braced transversely by
3' x 3' x 3/8" angle diagonals and longitudinally by two 3' x 3' x 3/8" angles fitted diagonally
in alternate spaces

Particulars of Freeing Arrangements.

	Length of Bulwark	Height of Bulwark	Size of Freeing Ports	Number each side	Area each side	Rule area each side
After Well	154' 8" ... at poop 44 ft at side 31 ft	3' 6"	36" x 15" 36" x 15"	1 off 1 off	50% open rule	open rails for 1/2 length of exposed part of weather Deck
Forward Well	120' 8" ... at poop 18 ft at side 27 ft	3' 6"	36" x 15" ✓	1 off ✓	50% open rule	

State position of each freeing port ... (After Well:-

(F. and A. position and height above deck edge) (Forward Well:-

State whether the freeing ports are fitted with shutters, bars, or rails, and give particulars of such:- rails.

Additional area where sheer is less than standard.

PARTICULARS OF PROTECTION TO OPENINGS, ETC.

HATCHWAYS ON FREEBOARD AND SUPERSTRUCTURE DECKS.									
<div> <div>Forecastle deck</div> <div>Foreboard deck</div> <div>Deck</div> </div>									
Description of Hatchway	Fore part 30' x 20'	Fore part 9' x 14'	Fore part 30' x 30'	Fore part 9' x 14'	Fore part 30' x 30'	Fore part 30' x 35'	Fore part 30' x 35'	Fore part 30' x 35'	Fore part 30' x 35'
Dimensions of Hatchway									
COAMINGS									
Height above Deck	9' 6"	18"	18"	18"	30'	30'	30'	30'	30'
Thickness	46	50	44	50	50	50	50	50	50
Sides									
Ends									
Stiffeners									
Brackets, Stays									
HATCH BEAMS									
Number									
Spacing									
Scantling and Sketch									
Bearing Surface									
FORE AND AFTERS									
Number									
Spacing									
Unsupported Lengths									
Scantling and Sketch									
Bearing Surface									
HATCH COVERS									
Material	Steel	Steel	Steel	Steel	Steel	Steel	Steel	Steel	Steel
Thickness	50	44	50	46	50	50	50	50	50
How fitted	hinged	hinged	hinged	hinged	hinged	hinged	hinged	hinged	hinged
Bearing Surface	6 J.	6 J.	6 J.	6 J.	6 J.	6 J.	6 J.	6 J.	6 J.
Spacing of Cleats	18' apart	18' apart	18' apart	18' apart	18' apart	18' apart	18' apart	18' apart	18' apart
Number of Tarpaulins	1	1	1	1	1	1	1	1	1

*Are wood fore and afters steel shod at all bearing surfaces?
 Are battens and wedges efficient and in good condition?
 Are tarpaulins in good condition and in accordance with rule requirements?
 Are lashings provided in accordance with rule requirements?

Particulars of any special features:— This vessel is a sister vessel to same builder N7052 do as regard form.

Endorsement at first survey and at surveys for renewal of Certificate:—

The fittings and appliances are in accordance with the particulars shown on this form (or as now modified) and are in good condition.



© 2021

Lloyd's Register Foundation