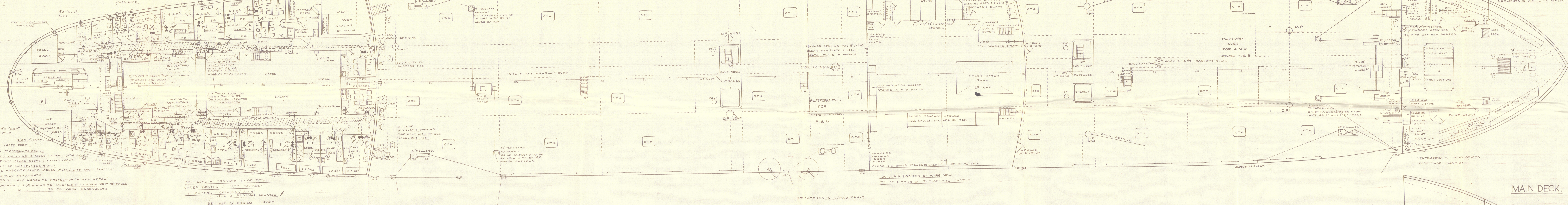
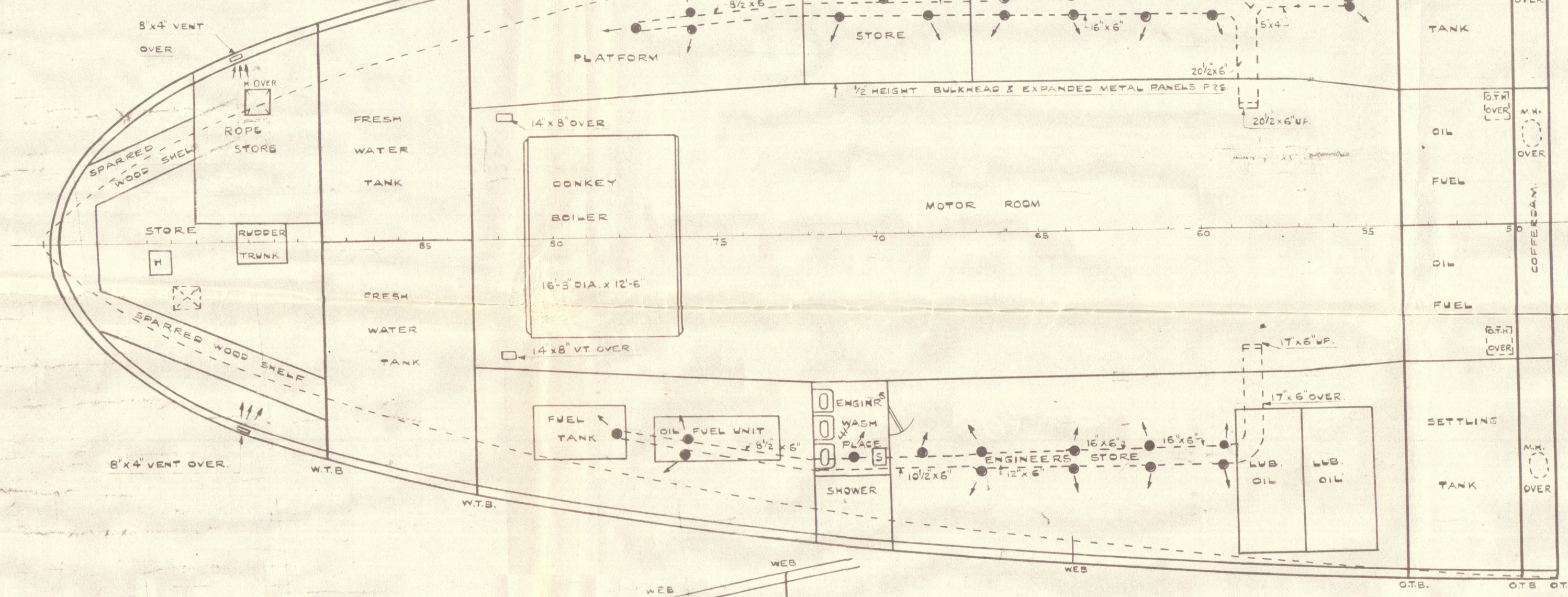


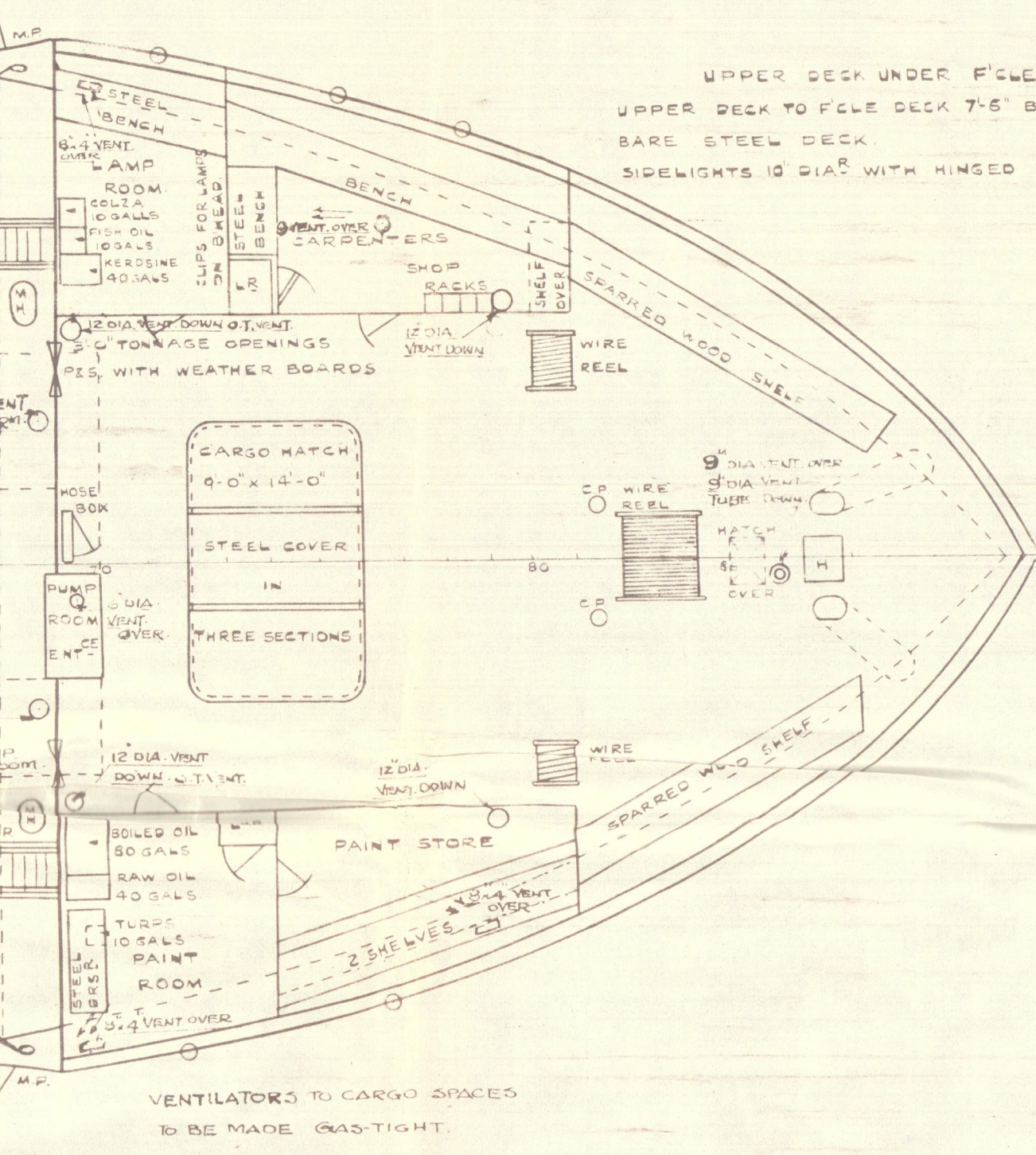
UPPER DECK.



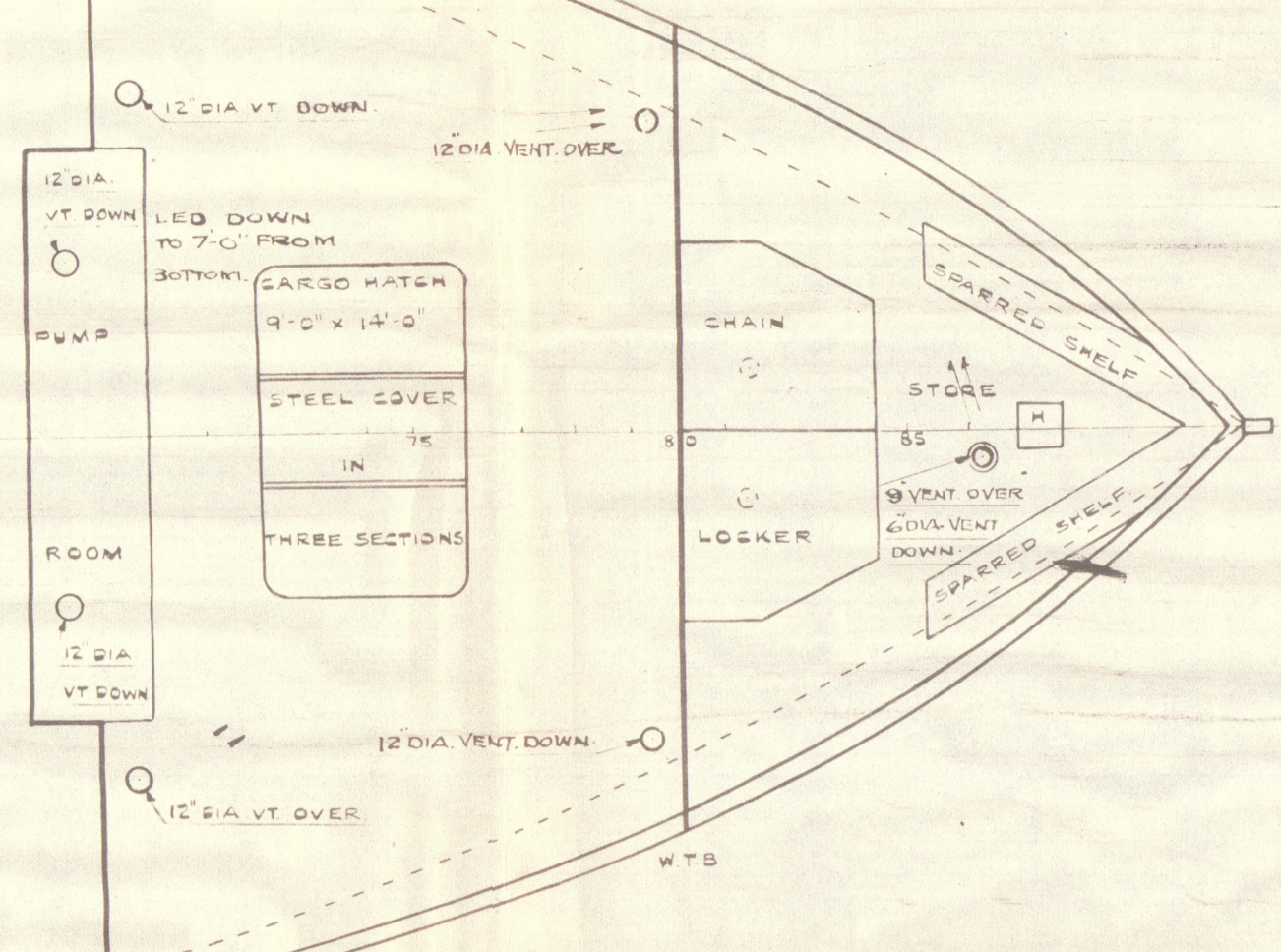
MAIN DECK.



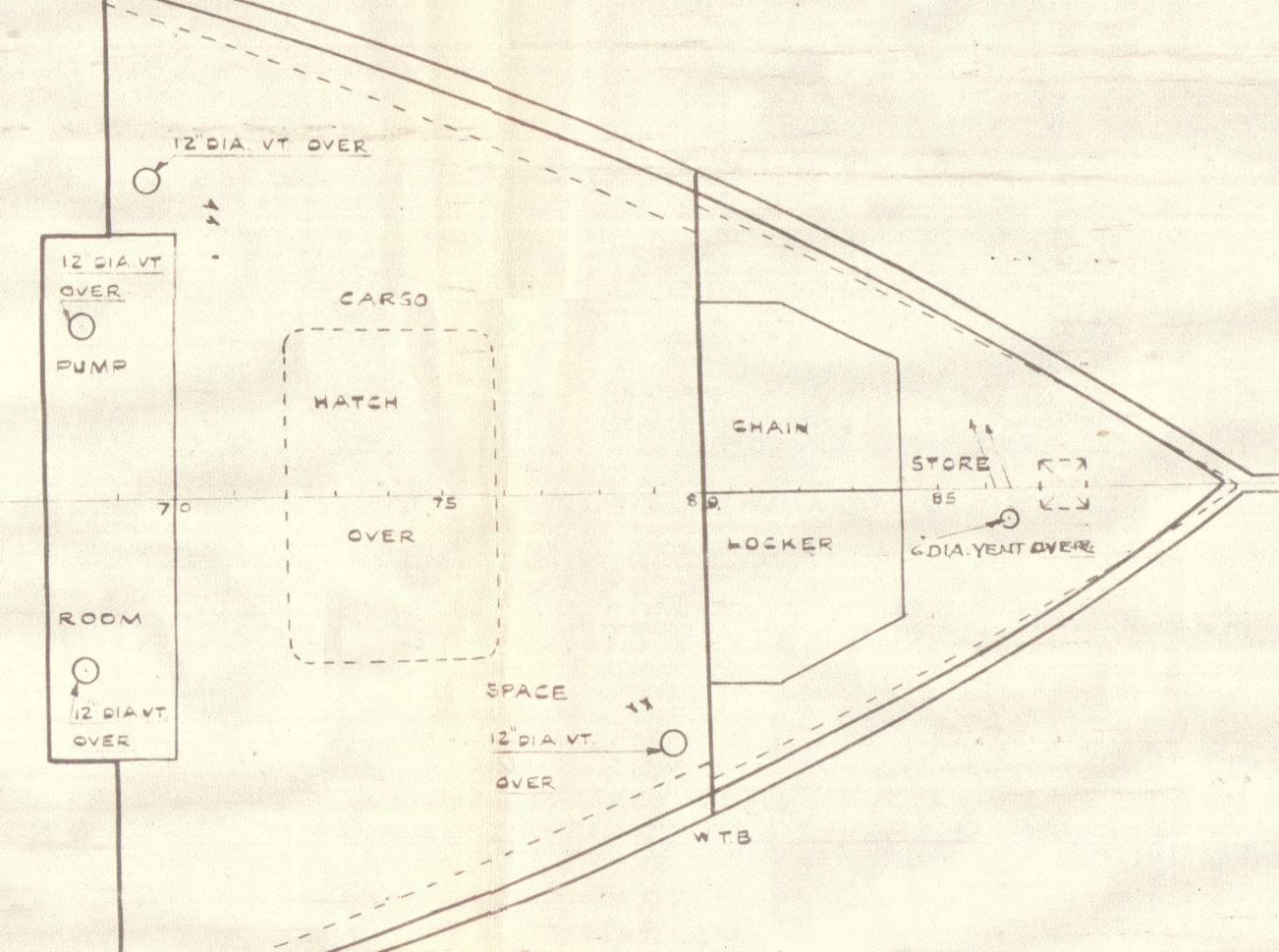
UPPER DECK.



MAIN DECK.



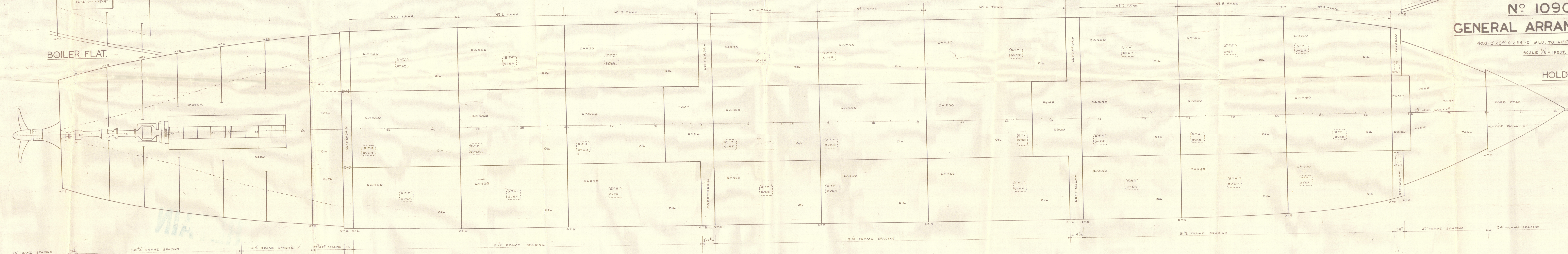
PEAK & DEEP TANK FLATS.



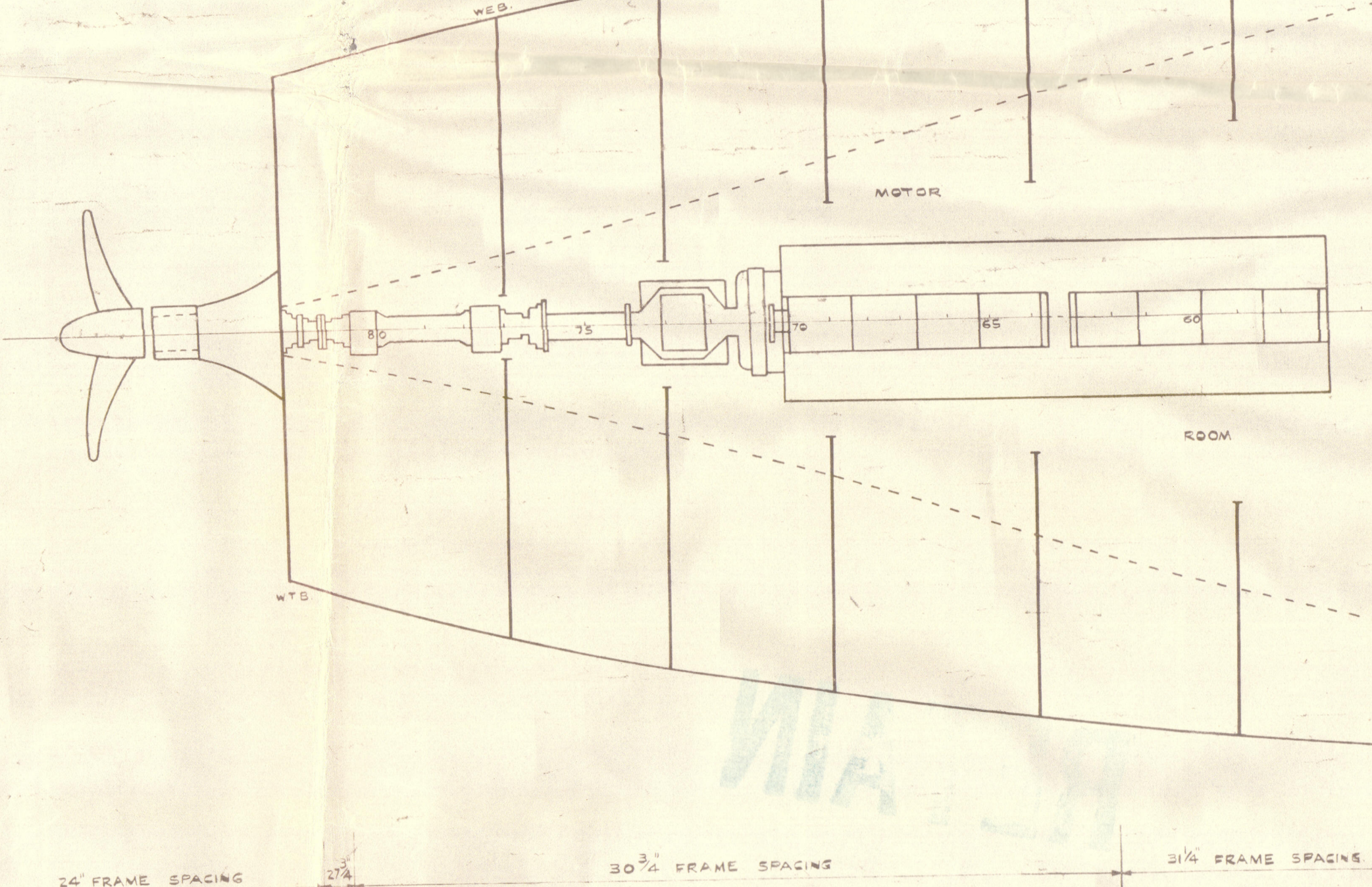
No 1090. GENERAL ARRANGEMENT.

400'0" x 59'0" x 24'0" MLD TO UPPER DECK.
SCALE 1/8" = 1'00 FT.

HOLD.



BOILER FLAT.



22

HARLAND & WOLFF LTD.
BELFAST

No. 1090

TITLE General Arrangement

DATE APPROVED information only

S/S San Veronica

Belfast Rpt No 13411

003971-003979-0195

RETAIN



© 2021

Lloyd's Register
Foundation