

MIDSHIP SECTION.

DIMENSIONS:-460'-0" B.P. x 59'-0" BREADTH. MLD x 34'-0" DEPTH. MLD.

SCALE: 1/2" = ONE FOOT.

25 JUL 1940

TO CLASS LLOYDS 100A1.
'CARRYING PETROLEUM' IN BULK:
LONGITUDINAL FRAMING AT BOTTOM & AT DECK
ALL BULB ANGLES ARE TO NEW BRITISH STANDARD
SCANTLINGS SHOWN APPLY AMIDSHIPS AND ARE
TO BE INCREASED FOR SHEER AS REQUIRED.
SCANTLINGS, INCLUDING SHELL, CLEAR OF CARGO
OIL TANKS TO BE SPECIALLY CONSIDERED.

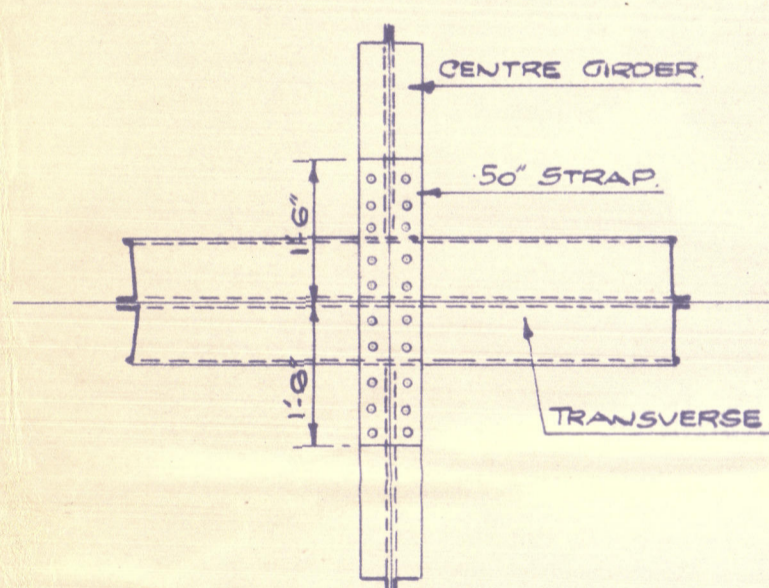
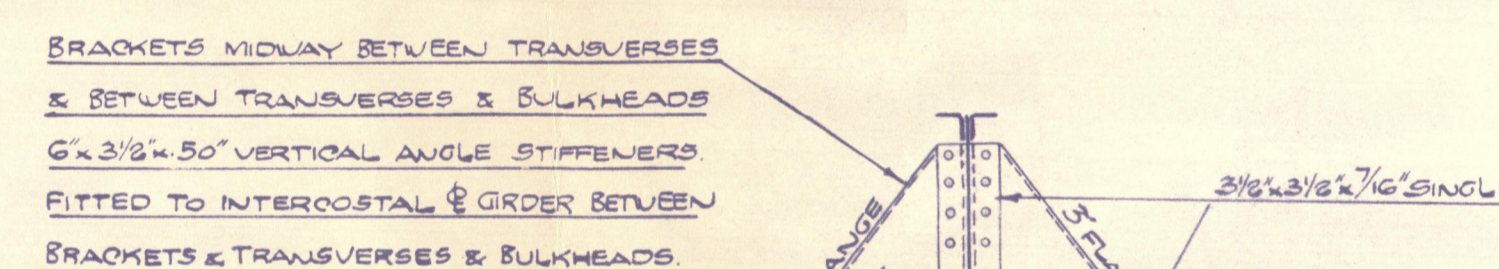
LLOYDS NUMERALS:

$L \times D$	$460'0'' \times 34'0''$	$= 15640$
$L \times (B+D)$	$460'0'' (59'0'' + 34'0'')$	$= 42780$
L/D	$460/34$	$= 13.52$

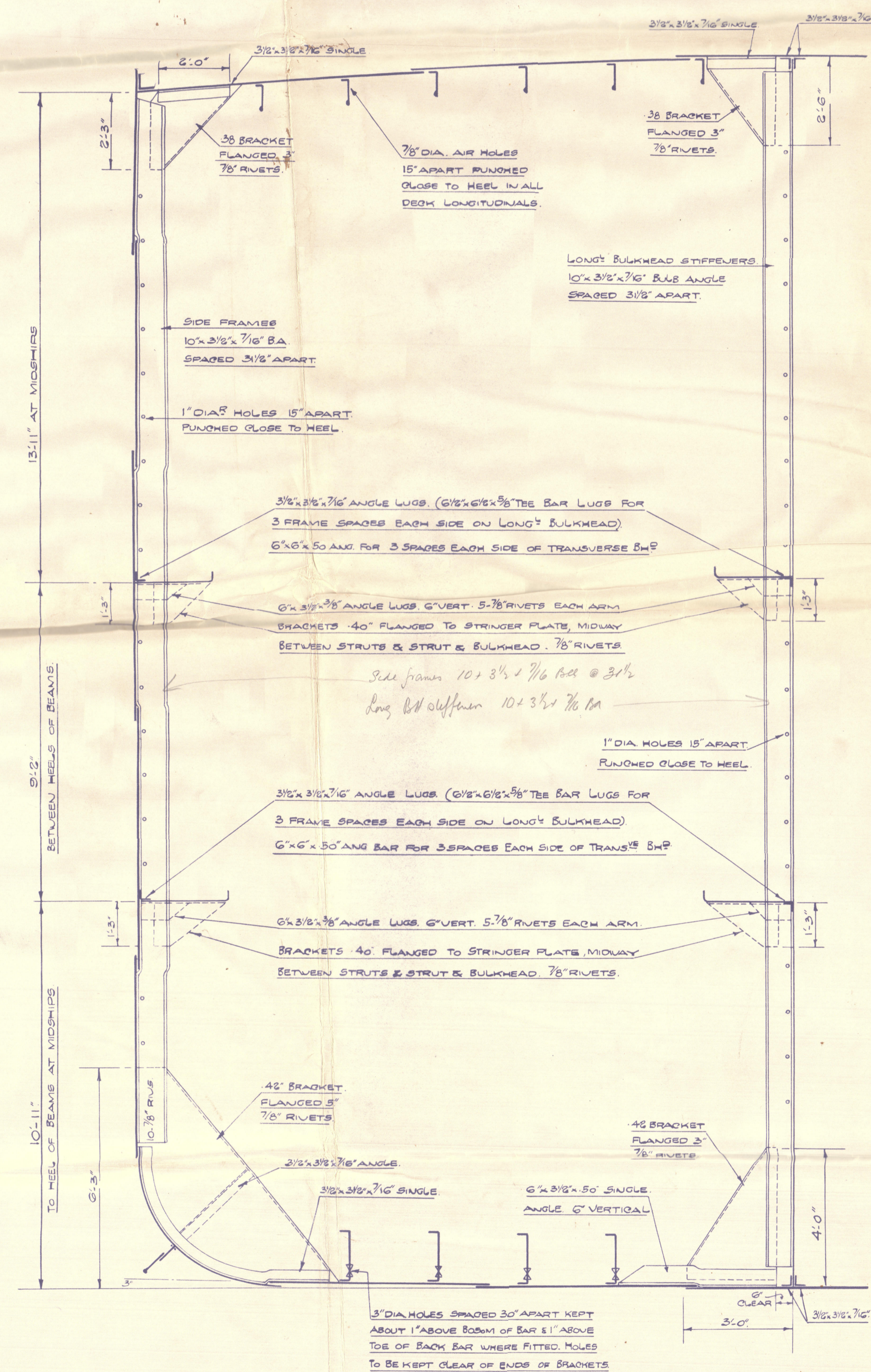
ALL ATTACHMENT ANGLES TO BULKHEADS TO BE HYDRAULICALLY
RIVETED ON THE GROUND PRIOR TO ERECTION.
NO PLATE SEAMS OR BUTTS TO BE ARRANGED IN WAY OF
THE CONNECTIONS OF THE TRANSVERSES & STRINGERS TO BULKHEADS

IN CONNECTIONS MARKED THIS "X" RIVET HOLES IN BOTH BARS & BULKHEAD
TO BE PUNCHED 1/8" SMALL AND CAREFULLY REAMERED OUT AFTER ASSEMBLY
CONNECTIONS TO BE DISMANTLED AND SURFACES CLEANED AND ALL
BURRS REMOVED ON RE-ASSEMBLY, BOLT TO BE FITTED IN EVERY 3RD
HOLE ALSO IN BOTH HOLES AT BOTH ENDS OF BARS AND ALL THOROUGHLY
HARDENED UP.

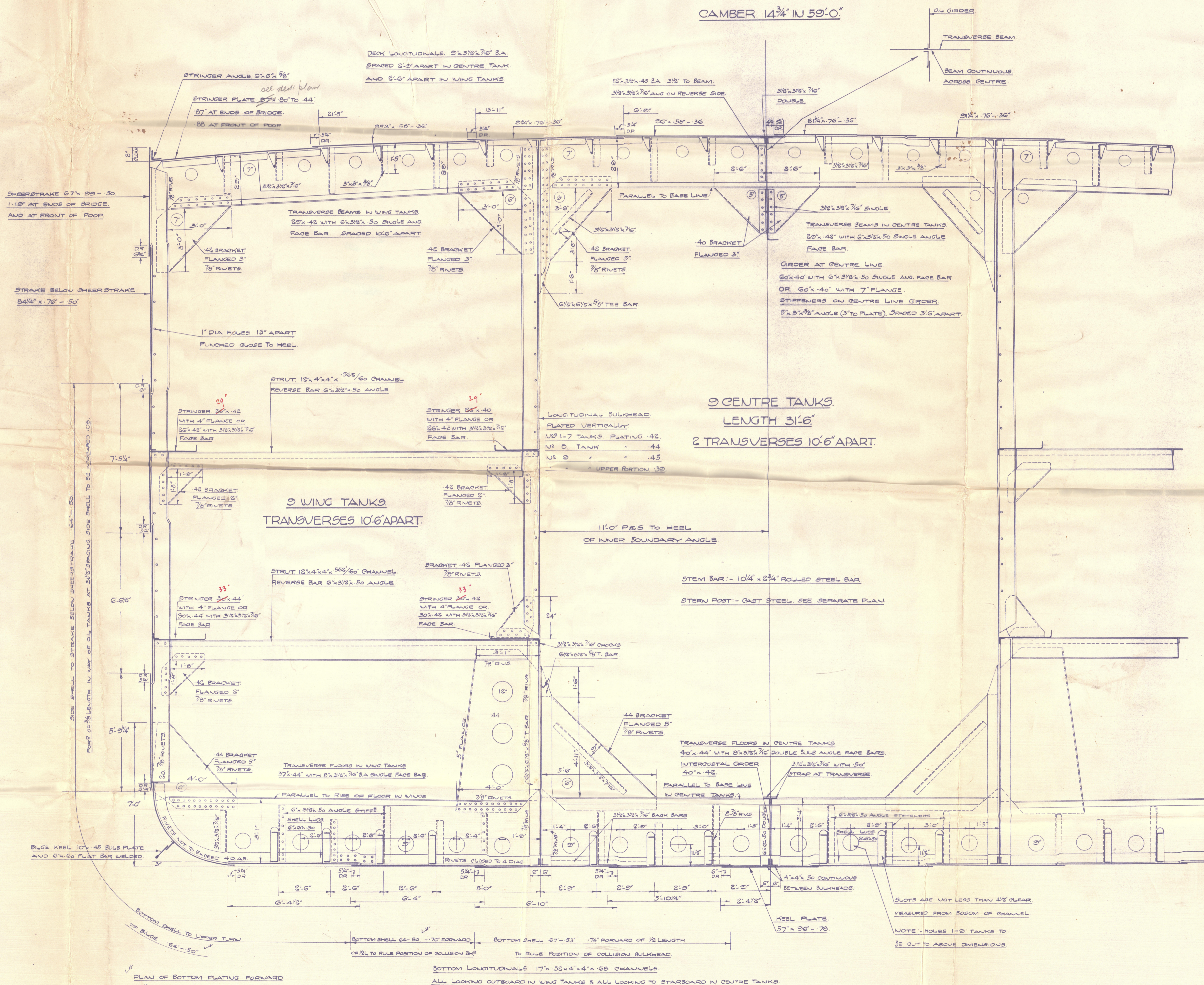
DETAIL OF CENTRE GIRDER TRIPPING BRACKETS



SECTION THRO' WING TANKS AT INTERMEDIATE FRAME.



9 WING TANKS.
TRANSVERSES 10' 6" APART.



SECTION AT TRANSVERSES. LOOKING AFT.

RIVETING

BOTTOM SHELL BUTTS - QUADRUPLE OVERLAYS TO TREBLE AT ENDS
DO SHELL BUTTS - " " " " " "
SHELL LANDINGS - DOUBLE RIVETED POKE AND AFT
HEEL PLATE BUTTS - QUINTUPLE OVERLAYS TO QUADRUPLE AT ENDS
SWEEPSTROKE BUTTS - " FOR 1/2 LENGTH TO TREBLE
AT ENDS WHERE NOT EXCEEDING 60"
STRAKE BELOW SWEEPSTROKE BUTTS } QUADRUPLE OVERLAYS FOR 1/8 LENGTH TO TREBLE
AT ENDS WHERE NOT EXCEEDING 96" *Egyptian*
THICK PLATES AT BREAKS - DOUBLE STRAPPED, TREBLE RIVETED
UPPER OR STRINGER BUTTS - QUADRUPLE OVERLAYS FOR 1/8 LENGTH TO TREBLE
AT ENDS WHERE NOT EXCEEDING 60"
THICK UPPER OR STRINGER PLATES AT BREAKS - QUINTUPLE OVERLAYS
UPPER DECK BUTTS - QUADRUPLE OVERLAYS FOR 1/8 L WHERE ABOVE G.
" - TREBLE " " " " " " NOT EXCEEDED
" - NOT LESS THAN DOUBLE OVERLAYS IN WAY OF O.
" LANDINGS - DOUBLE TRIPLE IN WAY OF OL SINGLE RIVETED
OUTRIGT SUBHEDGE BUTTS AND LANDINGS - DOUBLE RIVETED.

RIVET SPACING.

[illegible]

2 BOWER ANCHORS. 73.16 GUTS EACH. STOCKLESS.

STREAM ANCHOR	22	OUT5 (EX STOCK)
---------------	----	-----------------

240 FATHOMS 2 7/8" STUP LINK CHAIN CABLE

TWO SPARE ANCHOR AND TWO CABLE SHACKLES

ONE BOX PINS AND PUNCHES AND ONE SHACKLE PUNCH

180 FATHOMS 5° (6/12) ORG WIRE STREAM.

130 " 5 1/4" (6/24) " " TOW LINE.

2 @ 100 FATHOMS	2 3/4" (5/16)	*	*	NAUSERS
-----------------	---------------	---	---	---------

2 @ 100	"	2 3/4" (5/12)	"	"	WARPS.
---------	---	---------------	---	---	--------

ALL WERE TO BE ON REELS ALL REEL TO TALK

61765 61766 61767 61768 61769 61770 61771 61772 61773 61774 61775 61776 61777 61778 61779 61780 61781 61782 61783 61784 61785 61786 61787 61788 61789 61790 61791 61792 61793 61794 61795 61796 61797 61798 61799 61800 61801 61802 61803 61804 61805 61806 61807 61808 61809 61810 61811 61812 61813 61814 61815 61816 61817 61818 61819 61820 61821 61822 61823 61824 61825 61826 61827 61828 61829 61830 61831 61832 61833 61834 61835 61836 61837 61838 61839 61840 61841 61842 61843 61844 61845 61846 61847 61848 61849 61850 61851 61852 61853 61854 61855 61856 61857 61858 61859 61860 61861 61862 61863 61864 61865 61866 61867 61868 61869 61870 61871 61872 61873 61874 61875 61876 61877 61878 61879 61880 61881 61882 61883 61884 61885 61886 61887 61888 61889 61890 61891 61892 61893 61894 61895 61896 61897 61898 61899 61900 61901 61902 61903 61904 61905 61906 61907 61908 61909 61910 61911 61912 61913 61914 61915 61916 61917 61918 61919 61920 61921 61922 61923 61924 61925 61926 61927 61928 61929 61930 61931 61932 61933 61934 61935 61936 61937 61938 61939 61940 61941 61942 61943 61944 61945 61946 61947 61948 61949 61950 61951 61952 61953 61954 61955 61956 61957 61958 61959 61960 61961 61962 61963 61964 61965 61966 61967 61968 61969 61970 61971 61972 61973 61974 61975 61976 61977 61978 61979 61980 61981 61982 61983 61984 61985 61986 61987 61988 61989 61990 61991 61992 61993 61994 61995 61996 61997 61998 61999 62000 62001 62002 62003 62004 62005 62006 62007 62008 62009 62010 62011 62012 62013 62014 62015 62016 62017 62018 62019 62020 62021 62022 62023 62024 62025 62026 62027 62028 62029 62030 62031 62032 62033 62034 62035 62036 62037 62038 62039 62040 62041 62042 62043 62044 62045 62046 62047 62048 62049 62050 62051 62052 62053 62054 62055 62056 62057 62058 62059 62060 62061 62062 62063 62064 62065 62066 62067 62068 62069 62070 62071 62072 62073 62074 62075 62076 62077 62078 62079 62080 62081 62082 62083 62084 62085 62086 62087 62088 62089 62090 62091 62092 62093 62094 62095 62096 62097 62098 62099 62100 62101 62102 62103 62104 62105 62106 62107 62108 62109 62110 62111 62112 62113 62114 62115 62116 62117 62118 62119 62120 62121 62122 62123 62124 62125 62126 62127 62128 62129 62130 62131 62132 62133 62134 62135 62136 62137 62138 62139 62140 62141 62142 62143 62144 62145 62146 62147 62148 62149 62150 62151 62152 62153 62154 62155 62156 62157 62158 62159 62160 62161 62162 62163 62164 62165 62166 62167 62168 62169 62170 62171 62172 62173 62174 62175 62176 62177 62178 62179 62180 62181 62182 62183 62184 62185 62186 62187 62188 62189 62190 62191 62192 62193 62194 62195 62196 62197 62198 62199 62200 62201 62202 62203 62204 62205 62206 62207 62208 62209 62210 62211 62212 62213 62214 62215 62216 62217 62218 62219 62220 62221 62222 62223 62224 62225 62226 62227 62228 62229 62230 62231 62232 62233 62234 62235 62236 62237 62238 62239 62240 62241 62242 62243 62244 62245 62246 62247 62248 62249 62250 62251 62252 62253 62254 62255 62256 62257 62258 62259 62260 62261 62262 62263 62264 62265 62266 62267 62268 62269 62270 62271 62272 62273 62274 62275 62276 62277 62278 62279 62280 62281 62282 62283 62284 62285 62286 62287 62288 62289 62290 62291 62292 62293 62294 62295 62296 62297 62298 62299 62300 62301 62302 62303 62304 62305 62306 62307 62308 62309 62310 62311 62312 62313 62314 62315 62316 62317 62318 62319 62320 62321 62322 62323 62324 62325 62326 62327 62328 62329 62330 62331 62332 62333 62334 62335 62336 62337 62338 62339 62340 62341 62342 62343 62344 62345 62346 62347 62348 62349 62350 62351 62352 62353 62354 62355 62356 62357 62358 62359 62360 62361 62362 62363 62364 62365 62366 62367 62368 62369 62370 62371 62372 62373 62374 62375 62376 62377 62378 62379 62380 62381 62382 62383 62384 62385 62386 62387 62388 62389 62390 62391 62392 62393 62394 62395 62396 62397 62398 62399 62400 62401 62402 62403 62404 62405 62406 62407 62408 62409 62410 62411 62412 62413 62414 62415 62416 62417 62418 62419 62420 62421 62422 62423 62424 62425 62426 62427 62428 62429 62430 62431 62432 62433 62434 62435 62436 62437 62438 62439 62440 62441 62442 62443 62444 62445 62446 62

SIZES SUPPLIED. REELS FOR LARGE WIRTS TOO

W.J.
25.7.41
Loyola



①

HARLAND & WOLFF LTD.
BELFAST

No. 1090

TITLE Midskip Section

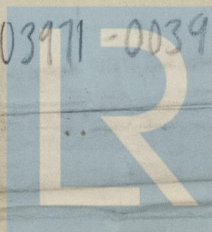
DATE APPROVED 25. 7. 40

San Veronica

Bel Rpt No 13411

RETAIN

003971-003979 © 2021



Lloyd's Register
Foundation